



# Family Treasure Trail

For all ages!

Hello! I'm Haddie  
the elephant

and I'm here to take you  
on a treasure trail around  
the Pump Rooms Gardens and  
Jephson Gardens.

We will find out more  
about the treasures in  
the Art Gallery & Museum  
collections and have lots  
of fun along the way!



This treasure trail should take about an hour and is suitable for all the family! You will need a pencil, and when you've finished pop into the Art Gallery & Museum to claim your sticker.



During the first half of the 19th Century Leamington developed as a spa resort where wealthy people could enjoy leisure pursuits, like visiting parks and gardens.

**So let's get in the mood to go back in time!**



Take a few minutes to relax and really look around you.  
Imagine no cars, just horses and carriages. People would have worn very different clothes too, like the ones in these pictures.

Scan me →  
To see pictures of the gardens back in the Victorian Era.



**Look all around**

*You could do a spin, if you like!*

When visitors came to Leamington Spa to 'take the waters', they also used to **PROMENADE** (a posh word for walking) around the gardens or sit on a deck chair and listen to a brass band.

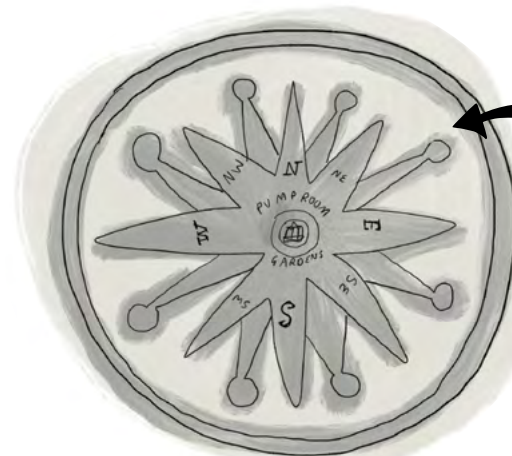
So we're going to do the same.

**Can you find the arches around the park and walk underneath them?** Keep your backs straight and use your poshest voices!

Take a close look at the arches as you walk underneath them.

**What hat is on the side of the arches?**

Answer: A crown



Now walk to the entrance of the Royal Pump Rooms and **find the orientation circle on the ground!**

Face south and keep promenading along the colonnade.

Stop next to the **water fountain** before the bridge.



## Spa Water



Ooh I'm thirsty.

Can we have a nice drink of Leamington's special water?

**If the tap is on go ahead!**

Sometimes it's switched off so you'll have to imagine a salty sulphur taste. Yuk!

Doctors used to think the water had so many health benefits and visitors were told to drink several glasses a day.

While you're here, look over at the parish church!

### Can you see a swirling blue sculpture?

It marks the spot where the first spa water was discovered on the Earl of Aylesford's land.

The first mention of the spa water was in 1480. It was used to make bread and preserve meat.

?

### Did you know?

This whole town grew from a tiny village into what it is today all because of this water?



← Scan me

Find out more about the Spa and see the original well outside All Saints' Church.



Now walk back past the Royal Pump Rooms.

**What direction is this?**

Answer: North

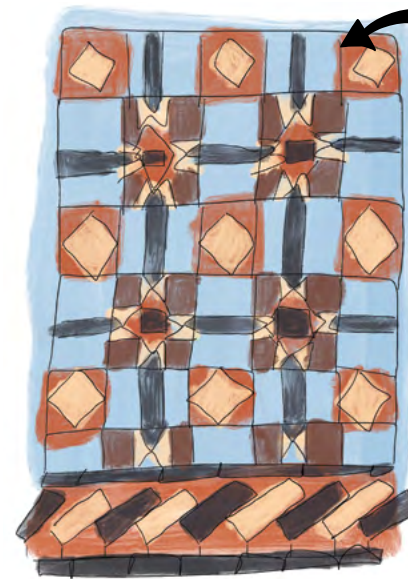
**How many pillars are on the colonnade?**

Answer: 19



**Look at the beautiful patterned tiles, how many colours are there?**

When you finish the trail, don't forget to visit the Art Gallery & Museum to get your sticker. Pop in and see our Hammam for more amazing patterns.



Scan me →  
to see a picture of the Hammam from our collection



You could take a really cool photo all peeping out from behind the pillars....

**Experiment!** Take a few shots: try different angles and poses.

Cross at the traffic lights and enter **Jephson Gardens** through the gate.

**Find the coat of arms on the gate.**

**Which animal can you see, and what is rather strange about it?**

Answer: A two tailed lion



Many things in this garden are named after famous people from the past. The land from the gardens was first leased to Leamington by Squire Edward Willes, and the gardens were improved by another local man, Dr John Hitchman, who also cared greatly about helping the poor.

You used to have to pay to enter the park, and go through a turn style. It was free on Sunday for the poor.

When you arrive in Jephson Gardens turn left.

Scan me  
to see old pictures of the Jephson Gardens Gates



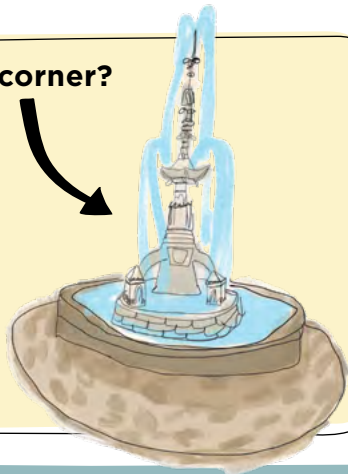
**Can you spot the big fountain in the corner?**

It is named after Dr Hitchman.

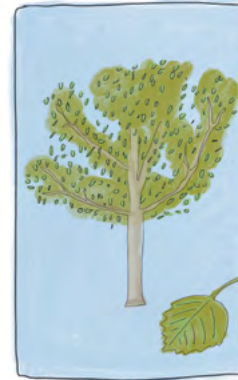
Look up and see if you can find the wind dial on a lamppost.

**Why do think the fountain has to be switched off if the wind is blowing the wrong way?**

Answer: Because people get wet on the pavement.



Jephson gardens is an arboretum and has some very special trees. **Let's learn a few facts about some of them.**



**Himalayan Birch**

This tree has a silver trunk.



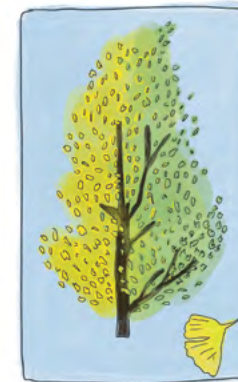
**Coastal Redwood**

Feel the bark, it's soft. This means it doesn't burn easily.



**Tulip**

The Tulip tree has very big leaves and flowers, like tulips.



**Ginko**

This type of tree is prehistoric. It would have been around at the time of the dinosaurs!



**Sugar Maple**

This is where maple syrup comes from and the leaf appears on the Canadian flag.

**Tick the box when you have found the tree.**

- Himalayan Birch
- Coastal Redwood
- Tulip
- Ginko
- Sugar Maple



Walk along the central path and have good look at some of the other amazing trees and beautifully designed flower beds.



You're now on the search for a round building with steps at the front.

See if you can find the answers to the questions below.

1. What is it called?
2. Who is inside?
3. What material is the sculpture made of?

Answers: 1. The Jephson Memorial 2. Dr Jephson 3. Marble

Inside the Art Gallery & Museum, we have so many treasures.



Scan me to find out about another sculpture made of marble. This one is called **Mother and Child**, and is by Alma Ramsey.

Now, turn left on the main central path.

You're looking for the **sensory garden!**  
**Can you smell it before you see it?**

**Can you see yourself in the entrance?**  
Make a silly face!

**What is there that will make some noise?**

Wiggle your way around the sensory garden remembering to look, listen, smell and touch!

**The next stop is the big clock!**



Scan me to discover something noisy

Let's get dizzy!

This clock is the Davis Clock tower.

1. How many benches look at the clock?
2. How many poles are there?
3. Can you read some of the memory poems on the poles?

Watch out! You might get dizzy!



Scan me to see how it used to look!

Next to the café is a tree that children love, and often play in, called **The Western Red Cedar.**

If there are any branches or leaves on the ground (never pick off the tree) rub them in your fingers!

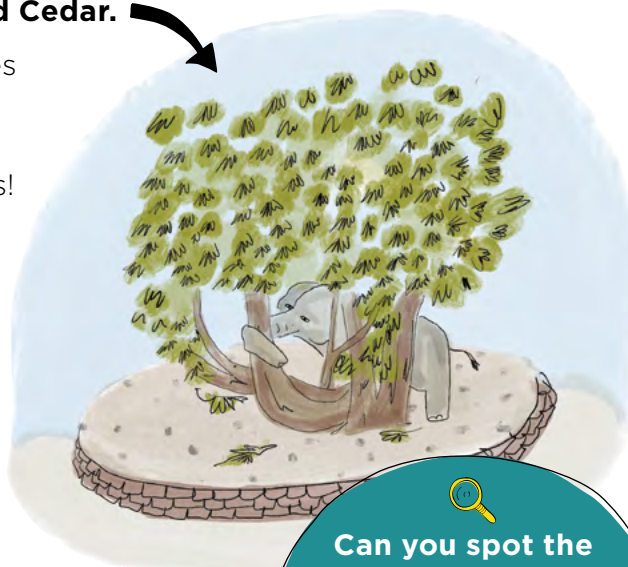
They should smell like a tropical fruit. **Can you smell which one?**

Answer: Pineapple

Behind the hedge are lots of other trees, and this is good place to have a picnic too!



Scan me to see some other things children liked playing with in Victorian times



Can you spot the monkey puzzle tree?

That was around with the dinosaurs too. Once fossilised, the remains turn to Jet.

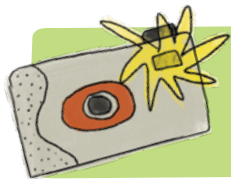
Now, look over to the river Leam. Sometimes it floods into Mill Gardens, and when it's very cold the water freezes and the garden becomes a giant ice rink!

Scan me  
to look at  
a Victorian  
Ice Skate



Next, we're going to walk down to the far end of the garden and back to the clock tower. On your way collect as many of the following things as you can.

- |                                    |   |
|------------------------------------|---|
| <input type="checkbox"/> Crocodile | <input type="checkbox"/> Wooden rainbow |
| <input type="checkbox"/> Hedgehog  | <input type="checkbox"/> Acorn          |
| <input type="checkbox"/> Poppy     | <input type="checkbox"/> Evergreen tree |



Fancy having your picture taken with an engineer?

**Find his statue.**

**What's his name?**

Answer: William Louis de Normanville

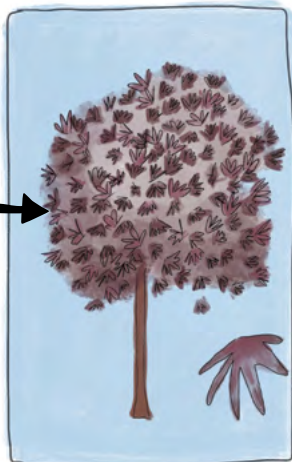
When you get back to the clocktower go past the loos on your left, and look for a building called **The Glasshouse**.

Look around here to see if you can spot a tree called **The Paperbark Maple**.

**Why do you think it's called this?**

Answer: The bark is like paper

Now, walk along the front of The Glasshouse. Look for an elephant, or two... or three...



I love it when it's all about me.

**Can you spot the elephant seat sculpture?**

**Who made this sculpture?**  
Answer: Nicholas Dimbleby

**Who is sitting on me?**

**What do you think I'm made of?**

Scan me

Take a look at another of the Art Gallery & Museum's treasures. This small version of the sculpture is called a **macquette**.

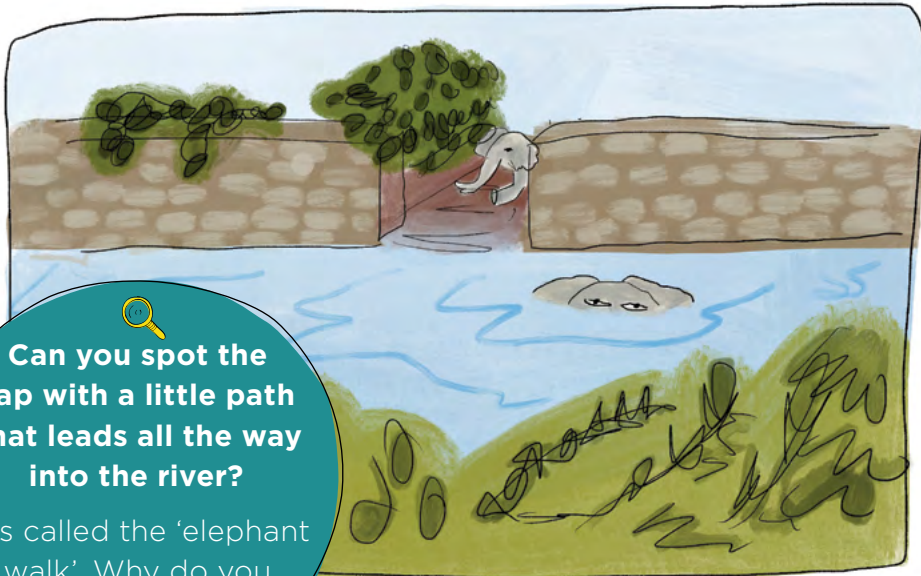
Now sit down and have a go at drawing your own picture of me!

There's a sketching section on the next page.

**I love all this attention!**

Have a go at sketching Haddie here.

Walk over to the hedge so you can see the bridge and the houses opposite the river Leam.



**Can you spot the gap with a little path that leads all the way into the river?**

It is called the 'elephant walk'. Why do you think that is?

Time for a little nature survey!  
You could sit on a bench.

We've got so many art works with animals in. These are some of our favourites.

Scan me →  
to see our favourite artwork with animals in



### What can you spot?

Wow, there's so much nature to see in the park!

Using a tally, how many of the following things can you see?

Duck	
Swan	
Pigeon	
Heron	
Sparrow	
Seagull	
Dog	
Squirrel	
Big Oak tree (clue they have tiny acorns)	
Small Oak Tree	

In 1848, at the Festival of Oaks, a Holm Oak was planted near the river. If trees could talk, what do you think this one would say!





# Congratulations!

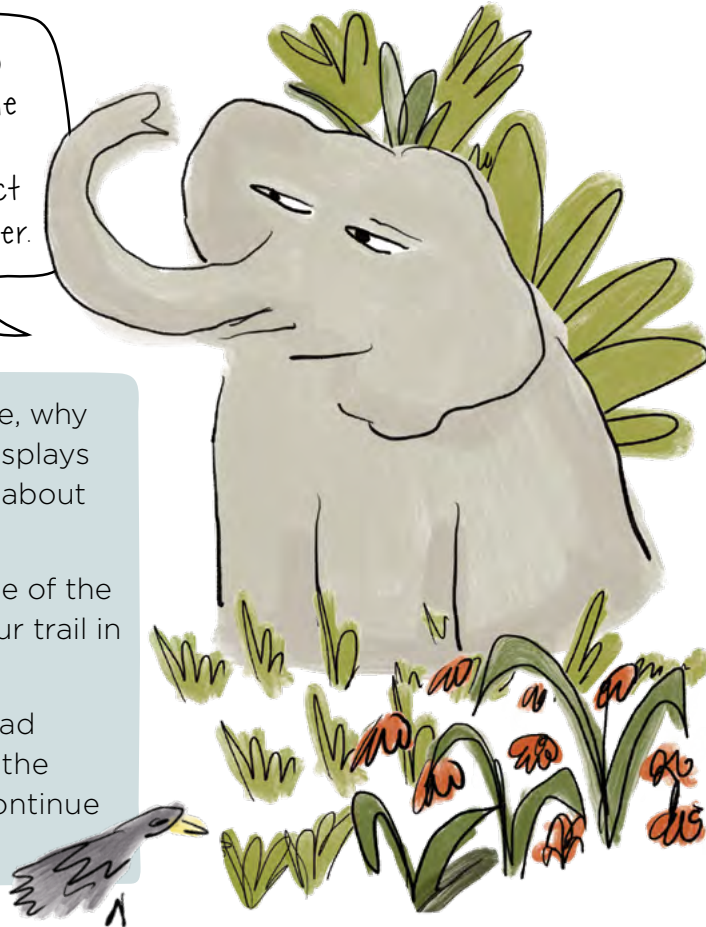
You have completed  
the Treasure Trail

Don't forget to  
head back to the  
Art Gallery &  
Museum to collect  
your reward sticker.

While you're there, why  
not look at the displays  
to find out more about  
the gardens?

You can see some of the  
treasures from our trail in  
real life!

Or, you could head  
over the river to the  
playground to continue  
the fun!





# Map of Treasure Trail



## Key things to spot along the trail

1. The Bandstand
2. Hitchman Fountain
3. Gingko Tree
4. Jephson Memorial
5. The Davis Clock
6. Sensory Garden
7. Elephant Seat