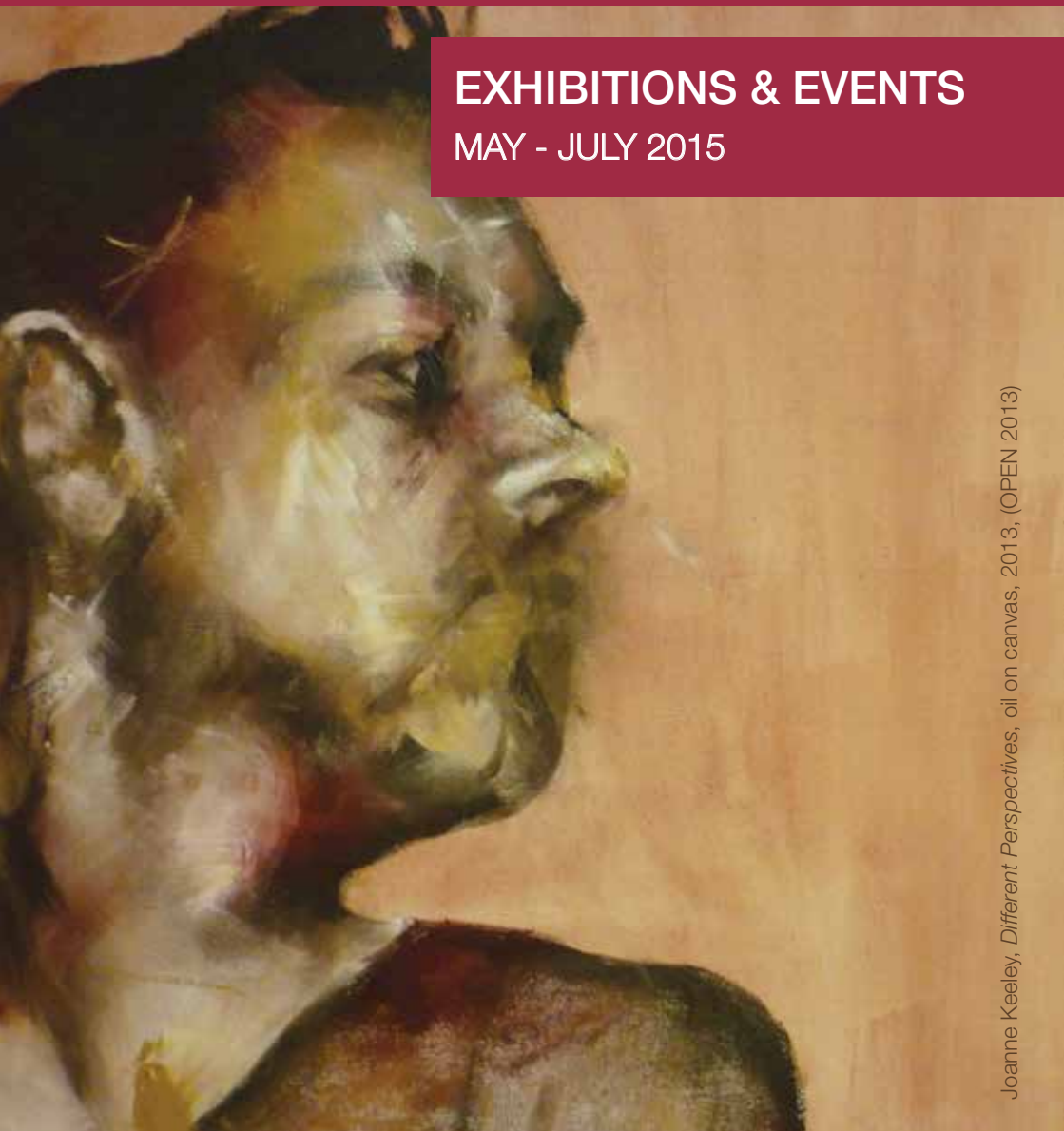




LEAMINGTON SPA
Art Gallery & Museum

EXHIBITIONS & EVENTS

MAY - JULY 2015



Joanne Keeley, *Different Perspectives*, oil on canvas, 2013, (OPEN 2013)

WELCOME

We do hope that you like our new-look What's On brochure for Leamington Spa Art Gallery & Museum in the Royal Pump Rooms. Please browse the pages to find out more about the opportunity to explore the arts and history through our extensive range of changing exhibitions, activities and workshops.



Many events are free and there is plenty for children and families to enjoy. While you are in the Royal Pump Rooms, there is also the chance to enjoy one of its other attractions; perhaps have a drink or something to eat in the café, attend one of the events in the Regency Assembly Rooms, or visit the library or Visitor Information Centre. Please come in, look around and enjoy your visit!



Jeff Watkin, Heritage & Arts Manager

VISITOR INFORMATION CENTRE

Leamington Visitor Information Centre's staff have a wealth of local knowledge and can provide information and advice for visitors and residents alike, including guided walks and tours, things to see and do, and where to eat and shop.



LIBRARY AND INFORMATION SERVICE

The library is located in the beautifully converted public swimming pool. The historic surroundings house the very latest in computer and research technology.

CAFÉ

The café offers a menu that includes lunches, cakes, pastries, tea and coffee.

GALLERY SHOP

Drop into our shop and view a selection of greetings cards, postcards, books, and other gift items. The shop also offers a changing selection of contemporary jewellery and craft items by professional designer-makers that are affordable, beautiful and made to be treasured! Come and look at our craft showcase to find out whose work is currently available.



THE ASSEMBLY ROOMS

The Assembly Rooms are available to hire for concerts, weddings, parties and conferences. For more information please visit: www.warwickdc.gov.uk/royalpumprooms



EXHIBITIONS

James O'Hanlon, *Death of Gaddafi*,
acrylic on canvas, (OPEN 2013 winner)



OPEN 2015

15 May – 12 July

Open exhibitions have been held at Leamington Spa Art Gallery & Museum since the 1930s, and have always been incredibly popular with both audiences and entrants. The upcoming OPEN 2015 is likely to be no exception.

The OPEN is held on a biennial basis and is open to all professional artists based in the West Midlands. This year's exhibition will take place from Friday 15 May to Sunday 12 July 2015 and will showcase the work of local artists. Works submitted must have been completed after January 2014.

Entries are welcome from a wide range of media including painting, sculpture, drawing, printmaking, photography, digital media and craft. Works will be selected for the exhibition by a panel of judges. The judges are Wendy Law, Director for Turning Point West Midlands, Fiona Venables, Deputy Curator for the Mead Gallery and Peter McCarthy, artist and critic. There will be one overall prize winner who will receive the OPEN 2015 award of £1,000. Visitors to the exhibition will also be given the chance to vote for their favourite artwork. The work of art which receives the highest public votes will be presented with the People's Choice Award of £500. All exhibited works will be for sale.

If you are interested in submitting work for the OPEN 2015, please send your details to rooms@warwickdc.gov.uk. Submission date is **Thursday 7 May, 10.30am-7pm**. For more information and to download an application pack please visit www.warwickdc.gov.uk/royalpumprooms



OPEN 2015 AWARD CEREMONY

**Thursday 14 May, 6pm – 7.30pm
(speeches 6.30pm)**

Join us for the opening of this exhibition and find out which artwork the independent panel of judges has chosen to receive the prestigious OPEN 2015 award and £1,000 prize.

FREE no need to book.

FRIDAY FOCUS EXTRA

Friday 3 July, 1pm

The People's Choice Award of £500 for the OPEN 2015 will be announced at this Friday Focus lunchtime talk.

FREE no need to book.



Lawrence Malloy, *Banbridge Bonsai*, match sculpture, 2013 (The People's Choice winner, OPEN 2013)

EVENTS

MARY RILEY – DRAWING IN RESPONSE TO MUSIC ADULT WORKSHOP

Saturday 23 May, 11am – 4pm

Join Mary Riley for an exciting and innovative way of working with a model in this life drawing workshop. The day is designed for students who already have experience of life drawing. Participants will work from the life model using music, both to create mood, and to extend their working methods. Participants will draw using a variety of drawing implements, including long sticks tipped with charcoal, and will work at their own pace.



LISA BROUGHTON – FELT JEWELLERY ADULT WORKSHOP

Saturday 6 June, 11am – 4pm

Spend the day with experienced artist Lisa Broughton where you will create beautiful felt jewellery to wear. Through a variety of techniques and processes you will learn how to wet felt colourful merino wool tops to create three-dimensional beads. These will be used to make necklaces, bracelets or rings. These felted beads can be mixed with contrasting yet quirky beads to make hard wearing and unique pieces of jewellery. All materials, tools and fastenings are included.

All adult workshops are £20 per person. Non-refundable. Places are limited, please call 01926 742700 to book. Payment required to confirm booking.

BRONIA SAWYER – PAPER BOUQUETS ADULT WORKSHOP

Saturday 11 July, 11am – 4pm

In this workshop, you will create a mix of different paper and fabric flowers using a range of cutting and shaping techniques. From the flowers participants will create a bouquet that could be used purely for decoration or even used as a bridal or bridesmaid bouquet! During the session, participants will use a paper cutting machine, paper punches and scissors to create a number of flower styles.



CRAFT CLUB

**Sunday 10 May, 7 June &
12 July, 2pm – 4pm**

We would like to invite you to join our monthly craft group! Come along for an afternoon of craft, tea and chat once a month. If you're working on something special or just starting out, we would love you to drop in!

FREE drop in and join in.



SKETCH CLUB

**Wednesday 20 May, 17 June
& 15 July, 2pm – 4pm**

If you are looking for somewhere to draw and would like to spend some time enjoying our collections, Leamington Spa Art Gallery & Museum sketch club could be the perfect place for you! With a different focus each month, join us for an afternoon of sketching and artistic inspiration. All abilities are welcome.

FREE drop in and join in.



MUSEUMS AT NIGHT: POST WAR PARTY

Saturday 16 May, 7.30pm – 11pm

For one night only, and to commemorate the 70 year anniversary of Victory in Europe Day, join us for a post war party and explore Leamington Spa Art Gallery & Museum at our Museums at Night event.

From 7:30pm - 8:30pm you'll have the chance to explore the museum after hours, taking part in different activities and talks. Find out about the Czech Resistance, discover World War II collections, make some VE Day bunting, find out how to create the perfect Victory rolls and much more!

At 8:30pm the post-war party begins! With live music and themed cocktails, jive your way around the Royal Pump Rooms Assembly Room and swing dance into the night. We'll also have a wartime photo-booth, where you can kit yourself out with props and costumes. 40s/50s dress is encouraged!

Tickets cost £16 per person. Available from the Art Gallery & Museum or via the Royal Spa Centre website.



LEAMINGTON LOOKS BACK AT WATERLOO

19 – 21 June 2015

A mini festival organised by Heritage Matters and Leamington Spa Art Gallery & Museum to commemorate the 200th anniversary of the Battle of Waterloo.



FRIDAY FOCUS

Friday 19 June, 1pm

Local historian Jacqui Kirk will present *Rattle in a Red Coat*. Four of Leamington's Masters of Ceremony in the years after Waterloo had been Army Officers in the Napoleonic Wars. Learn how Army Officers were expected to move effortlessly from the ballroom to the battlefield.

FREE drop in and join in.

REGENCY REVEL

Friday 19 June, 7pm – 11pm

Step back in time for an evening of Regency-themed entertainment inspired by celebrations 200 years ago. There will be live music, readings from the period, including Jane Austen and games.

Have a go at dances from the era.

Regency-style dress is encouraged!

Tickets cost £25 per person.

Available from the Art Gallery & Museum or via the Royal Spa Centre website.

MUSIC, MEDALS AND THE MILITARY

Saturday 20 June, 12noon – 4pm

Come along and discover more about the Napoleonic Wars. There will be costumed interpreters and activities for the whole family in the Pump Room Gardens.

Inside the Art Gallery & Museum, listen to Regency music and have a go at making your own marvellous medals!

FREE drop in and join in.

HANDSOME HATS

Sunday 21 June, 11am – 4pm

Make and decorate a hat suitable for a Regency lady or gentleman.

FREE drop in and join in.

Over the 'Leamington Looks Back at Waterloo' weekend there will be an opportunity to see objects relating to the Napoleonic Wars from the collections.

ACTIVITIES

MAGNA CARTA MAKERS

Saturday 13 June, 1pm – 4pm

Did you know it is 800 years since the Magna Carta was signed? To celebrate, we're having a day of activities, suitable for all the family! Make your own Medieval document and seal it with wax. Dress up in Medieval-style costume and try out your calligraphy skills after making a feather quill.

FREE drop in and join in.



PAPER FLOWER FAMILY WORKSHOPS

**Sunday 5, 12, 19 & 26 July,
1pm – 4pm**

In the run up to the Art in the Park festival weekend, we will be hosting paper flower making workshops here at the Art Gallery & Museum over four Sundays in July. Learn how to create your own paper flowers and make one to take away and one to leave, which will be displayed in the Royal Pump Rooms café.





ART IN THE PARK

Saturday 1 & Sunday 2 August

Art in the Park Festival takes place in Jephson Gardens on Saturday August 1 (11am-6pm) and Sunday 2 (10am-6pm) 2015.

It will be a creative mix of artists, musicians, theatre and hands-on creative experiences of ceramics, T-shirt design and painting; providing a rich mix for all tastes and ages and a memorable art filled weekend.

See www.lsa-artists.co.uk for more information or email carole@artinpark.co.uk

BRILLIANT BEES

Saturday 18 July, 11am – 4pm

To kick off the first weekend of the school holidays why not join us for a day celebrating brilliant bees! Spend the day learning about bee-friendly plants and meet staff and volunteers from the RSPB, the country's largest nature conservation charity, inspiring everyone to give nature a home. They will be joining us at the museum to deliver a fun, nature-themed activity. Make your own bee mask or headband to take home and find out how you can help encourage happy bees!

FREE drop in and join in.





ARTY TOTS

First Wednesday of each month, 11am – 12noon

Arty Tots sessions run in the art gallery on the first Wednesday of each month. They include free play and simple art activities for under 5s and their carers.

FREE drop in and join in.

ART CLUB

Thursday 28 May, 2pm – 4pm

Paint your own spring-themed ceramic tile to take home, using special ceramic pens and decorations.

FREE drop in and join in.

Recommended for children aged 6-12 years.

YOUNG CURATORS CLUB

Tuesday 26 May, 2pm – 3pm
Each Tuesday during the school holidays.

Have you ever wondered what goes on behind the scenes in the museum? Now is your chance to find out! Each Tuesday of the school holidays, explore the collections, learn how to handle objects and find out some fascinating facts.

Book your free place by calling 01926 742700 or email penelope.thomas@warwickdc.gov.uk
Suitable for ages 8 years and above.
Children under 16 must be accompanied by an adult or given written permission on arrival.



ART CART FAMILY FUN

Last Saturday of each month

1pm – 3pm

Join us for family art and craft sessions in the galleries using our mobile Art Cart. Create your very own artwork to take home. The Art Cart is also available during normal opening hours. Explore its drawers and pockets to discover lots of activities inspired by the displays.

FREE drop in and join in.

Final entry at 2.45pm.

Recommended for children up to 12 years.



HADDIE'S TRAILS FOR UNDER 5s



Haddie's Trails are designed to help families with young children explore the displays. The trails can be collected from the art gallery desk. There are four different themes to try.



HADDIE'S GALLERY

Join Haddie the circus elephant and explore our family gallery to discover what life was like for a child



in Victorian Leamington Spa. Enjoy fun interactive exhibits, dressing up and activity sheets.

NEW ACQUISITIONS



© Jane Bridgeman and MA Michael

JOHN BRIDGEMAN

Torture Wall, bronze and cement fondue, 1952-60

Although he trained as a landscape painter, Bridgeman became fascinated by sculpture and in the 1940s, while studying at the Royal College of Art, his work was admired by the already well-established sculptor Henry Moore. During World War II, while working in the Civil Defence Heavy Rescue Service, he started to design his Torture Wall, an installation of cast bronze figures, which he created in the 1950s. It was displayed for the first time in the 2013 exhibition 'Landscape to Sculpture: John Bridgeman 1916 – 2004' and has now become part of the permanent collection at Leamington Spa Art Gallery & Museum.

JOIN OUR MAILING LIST

If you would like to join our free mailing list and receive regular updates about our events and exhibitions, please call **01926 742700** or email prooms@warwickdc.gov.uk.



Become a fan of Leamington Spa Art Gallery & Museum on Facebook and follow us on Twitter [@LeamSpaArtGall](https://twitter.com/LeamSpaArtGall). Read regular posts about all the latest news and events.

ONLINE COLLECTIONS

You can explore Leamington Spa Art Gallery & Museum's collections online. All 12,000 items in our wide ranging collections have been added to an electronic archive including over 5,000 images. To access the online collections visit www.search.isagmcollections.org.uk.

You can also access the website from the computers in the galleries.

SCHOOLS

SCHOOLS' RESOURCES

We offer resources for teachers to lead school visits on a number of curriculum topics for Key Stages 1 and 2. Follow a trail around the gallery, use our free activity boxes or book a guided visit. We also have two online schools resources:

'A Walk Around Victorian Leamington Spa' and 'Toys and Games'. These are available within the spotlights section of the Windows on Warwickshire website. www.windowsonwarwickshire.org.uk

All school resources are free. For more information, or to book a visit, please telephone Penelope Thomas on 01926 742704.



Barnaby Bear Goes Travelling is a Geography Project linked to Art & Design. It is ideally suited to Years 1 and 2.

USEFUL INFO

CRAFT STUDIO FOR HIRE

Our Craft Studio is available to hire for educational visits and workshops, or for one-off meetings. Please call 01926 742700 for information.



FRIENDS OF LEAMINGTON SPA ART GALLERY & MUSEUM (FLAG)



FLAG support the Art Gallery & Museum, particularly by helping to fund the purchase and conservation of works of art. FLAG also organise a programme of events and visits. They always welcome new members. To find out more, please contact Maureen Chapman on 01789 840703 or visit www.friendsofleamingtonartgallery.co.uk

ARTS DEVELOPMENT

The Arts Development Service provides advice and support for artists and arts organisations who work and/or live within Warwick District.

To find out more please email mair.evans@warwickdc.gov.uk



HEARTBREAK PRODUCTIONS

Bring a picnic and join Heartbreak Productions for their open air summer productions of David Walliams' Mr Stink, Jane Austen's Emma and Shakespeare's Love's Labours Lost. Visit www.heartbreakproductions.co.uk for further information about dates, venues and tickets.

The poster for Warwickshire Open Studios 2015 is split into two main sections. The left section has an orange background and contains the event logo (a multi-colored concentric circle), the text "warwickshire open studios", the dates "27 June - 12 July 2015", and information about free entry to over 140 art exhibitions across Coventry & Warwickshire, along with the website "warwickshireopenstudios.org". The right section features a vertical strip of three artworks: a stylized woman in a striped skirt and a large, detailed floral sculpture.

CONCERTS

LEAMINGTON MUSIC FESTIVAL WEEKEND



Friday 1 May, 7.30pm

Fitzwilliam String Quartet
& Anna Tilbrook piano

Tuesday 5 May, 12 noon

Shaham-Erez-
Wallfisch Piano Trio

Saturday 2 May, 12noon

Roderick Williams baritone
& Garry Mathewman piano

Tuesday 5 May, 7.30pm

Henschel String Quartet
& Michael Collins clarinet

Saturday 2 May, 7.30pm

Ensemble 360

Sunday 3 May, 12noon

Jana Novakova violin
& Petr Novak piano

Sunday 3 May, 3.00pm

Family Concert with
The Singing Cellist

Sunday 3 May, 7.30pm

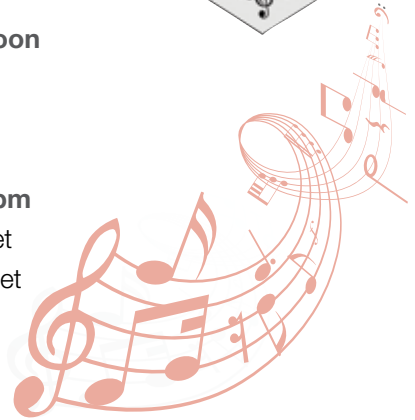
Michael Collins clarinet
& Peter Donohoe piano

Monday 4 May, 12.30pm

Simon Wallfisch baritone
& Edward Rushton piano

Monday 4 May, 7.30pm

Shaham-Erez-
Wallfisch Piano Trio



Tickets on sale at Leamington Town Hall Box Office

Online www.royalspacentreandtownhall.co.uk

Telephone 01926 334418

Visit www.leamingtonmusic.org for full details



Fitzwilliam String Quartet

HOW TO FIND US



Leamington Spa Art Gallery & Museum is in the Royal Pump Rooms, on The Parade, opposite Jephson Gardens. If travelling by car, leave the M40 at Junction 13 and follow directions into Leamington Spa on the A452.

Follow signs for the town centre. The Royal Pump Rooms is a 10 minute walk from Leamington Spa Railway Station. There are direct rail services from London Marylebone, Birmingham, Oxford and Coventry.

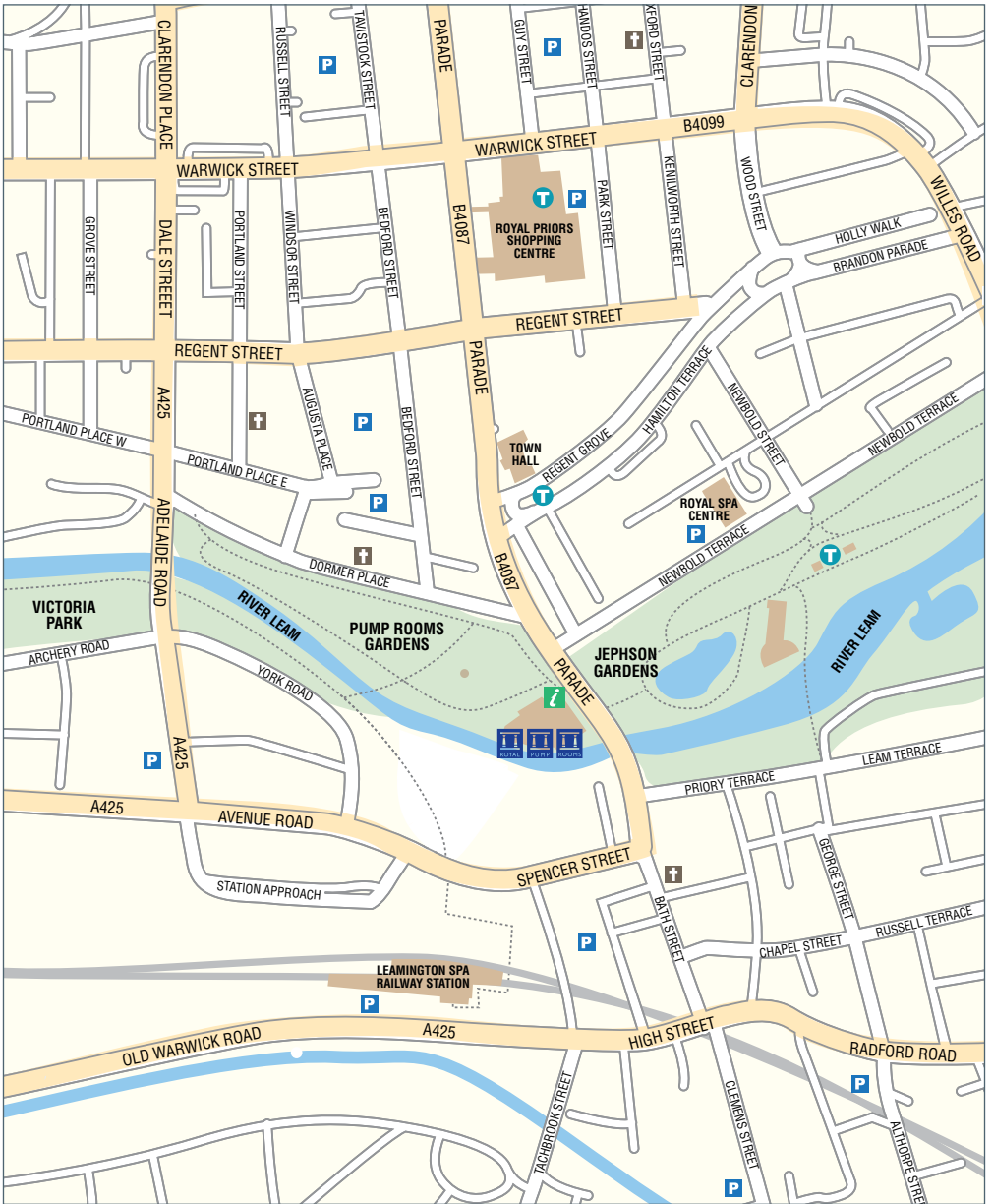
PARKING

There is limited parking directly outside the Royal Pump Rooms. Parking is reserved for disabled visitors approximately 10 metres from the entrance. There is a drop off point for coaches on Newbold Terrace. St. Peter's car park is also walking distance from the Royal Pump Rooms.



ACCESS

The art gallery is on one level and the museum is on two levels, the upper level is accessible by stairs and usually by chairlift. There is wheelchair access throughout most of the building, including toilets. For more information please telephone **01926 742700** or ask at the art gallery reception desk.



Leamington Spa Art Gallery & Museum, Royal Pump Rooms,
The Parade, Royal Leamington Spa, CV32 4AA



LEAMINGTON SPA Art Gallery & Museum



Like us on Facebook

Leamington Spa Art Gallery & Museum



Follow us on Twitter

@LeamSpaArtGall



Email us at

prooms@warwickdc.gov.uk



Visit us at

www.warwickdc.gov.uk/royalpumprooms



Write to us at

Leamington Spa Art Gallery & Museum
Royal Pump Rooms
The Parade
Royal Leamington Spa
CV32 4AA



Call us on

Art Gallery & Museum	01926 742700
Visitor Information Centre	01926 742762
Leamington Library	01926 742721 / 742722
Café & Assembly Rooms	01926 742751

Opening hours

Tues - Sat	10.30am - 5pm
Sun & Bank Hols	11am - 4pm
Mon	Closed

ADMISSION FREE

