

MYTON ATHLETIC FACILITY

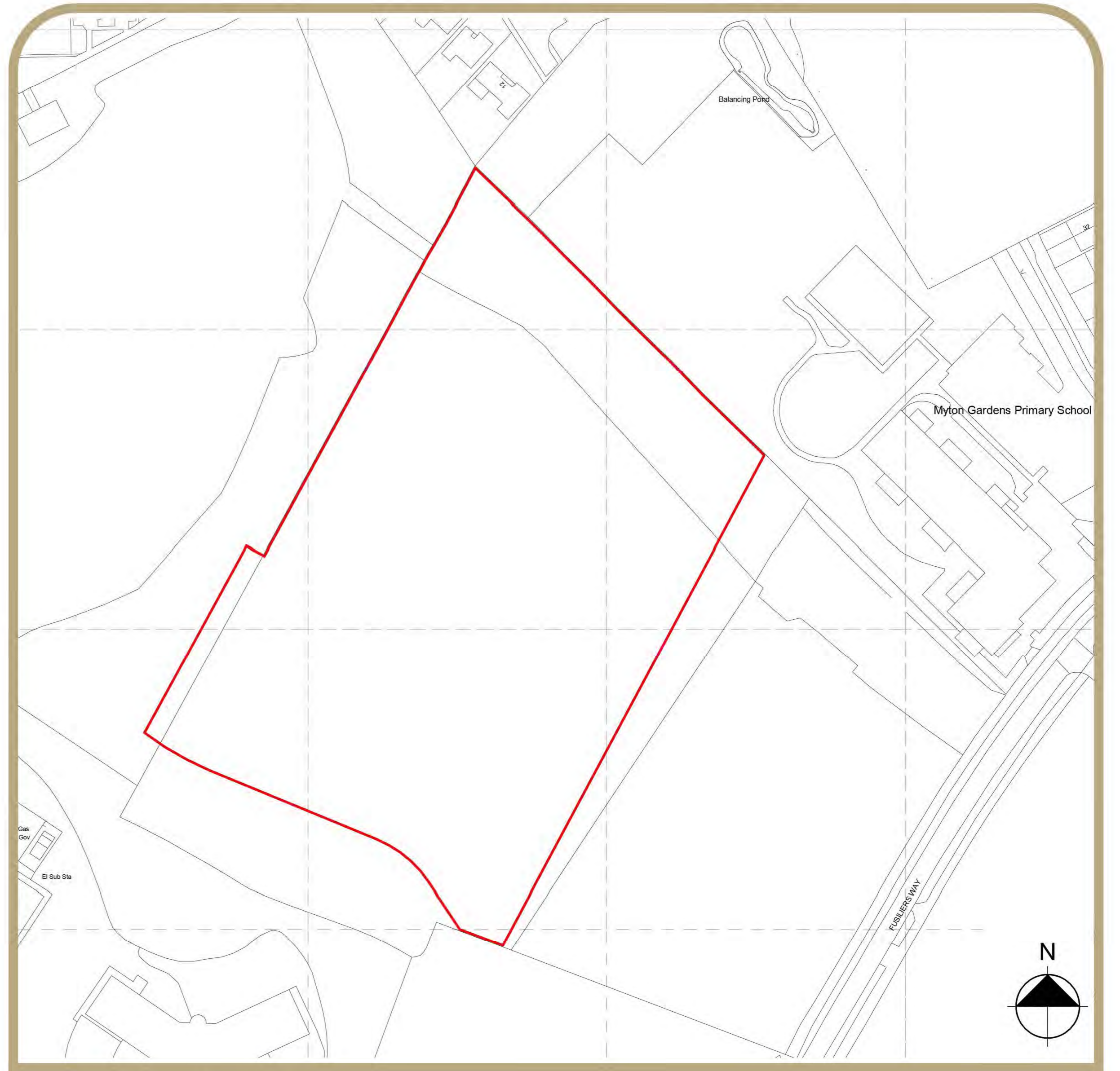
Project Vision & Context

The existing athletics facility at Edmondscote is reaching the end of its operational life and is increasingly affected by flooding, resulting in regular disruption and limiting year-round use. To address this, Warwick District Council is proposing the relocation of the track and associated facilities to a new site at Myton, off Fuseliers Way, delivering a modern, purpose-built venue that better meets the needs of current and future users.

The project as presented is the result of ongoing design development and consultation, forming a considered approach that responds to user needs, site opportunities, and the wider context. The design seeks to create a high-quality facility that is both functional and appropriate to its setting.

The design team has explored a range of options for the site and layout, working closely with key stakeholders to ensure the proposals meet the needs of athletics users and the local community. This process has helped shape a robust and well-integrated scheme.

The proposed facility forms part of the wider Myton Masterplan, which includes new educational provision and a community football stadium. The development will contribute to a coordinated and active environment, supporting sport, health, and wellbeing across the area.



Site Location Plan

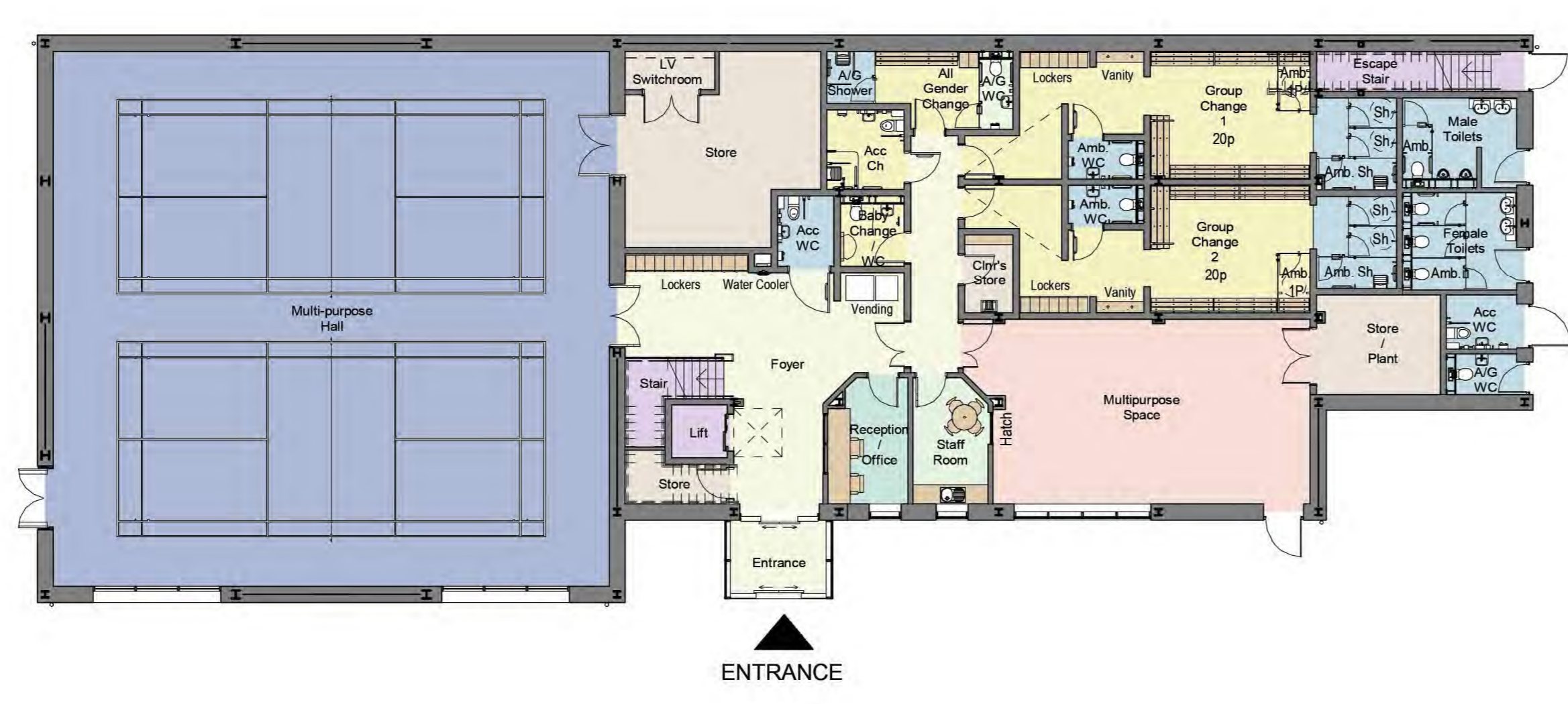


Aerial view of site location and surrounding context

MYTON ATHLETIC FACILITY

Design Proposals

Proposed Floor Plans



Ground Floor Plan

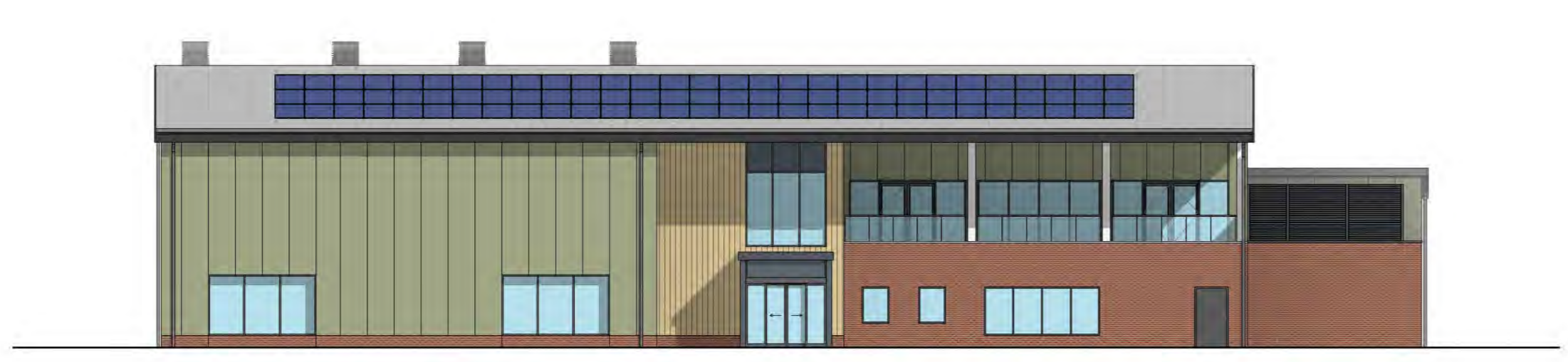
- 2 court (17.4 x 16.7m) Multipurpose Hall;
- 60m² of multipurpose activity space;
- Multipurpose hall store;
- Reception / office;
- Kitchenette / staff room;
- 2no. 20 person changing rooms with WC and showers;
- 1no. all-gender changing room with ambulant WC and shower facilities;
- Accessible changing;
- Accessible WC;
- Baby change with WC;
- External access male, female, all gender and accessible toilets.



First Floor Plan

- 150m² multi-use function room;
- External viewing terrace with track viewing;
- Kitchen with goods store;
- Equipment store for Function room;
- 2no. all-gender WCs;
- 1no. accessible WC;
- Comms room;
- Cleaner's store;
- External roof plant space.

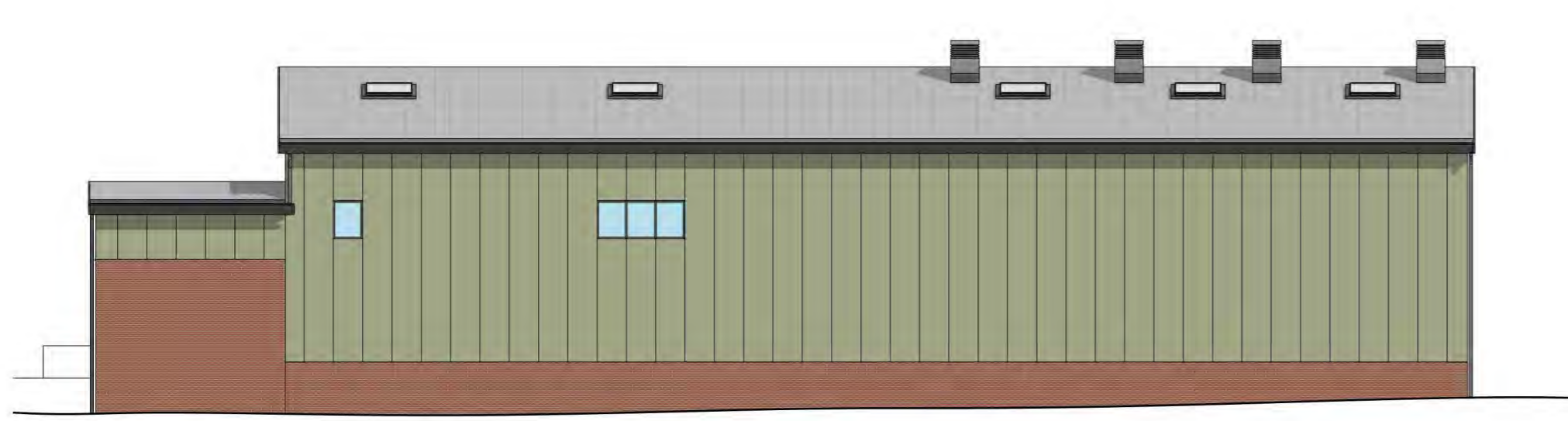
Proposed Elevations



1 Southeast (Front) Elevation
1:200







3 Northeast (Side) Elevation
1:200



2 Northwest (Rear) Elevation
1:200



4 Southwest (Side) Elevation
1:200

-  Vertical light green composite cladding panels
-  Facing brickwork – red brick
-  Timber effect vertical rainscreen cladding
-  Standing seam roof – stucco embossed plain mill finish

MYTON ATHLETIC FACILITY

Landscape Proposals

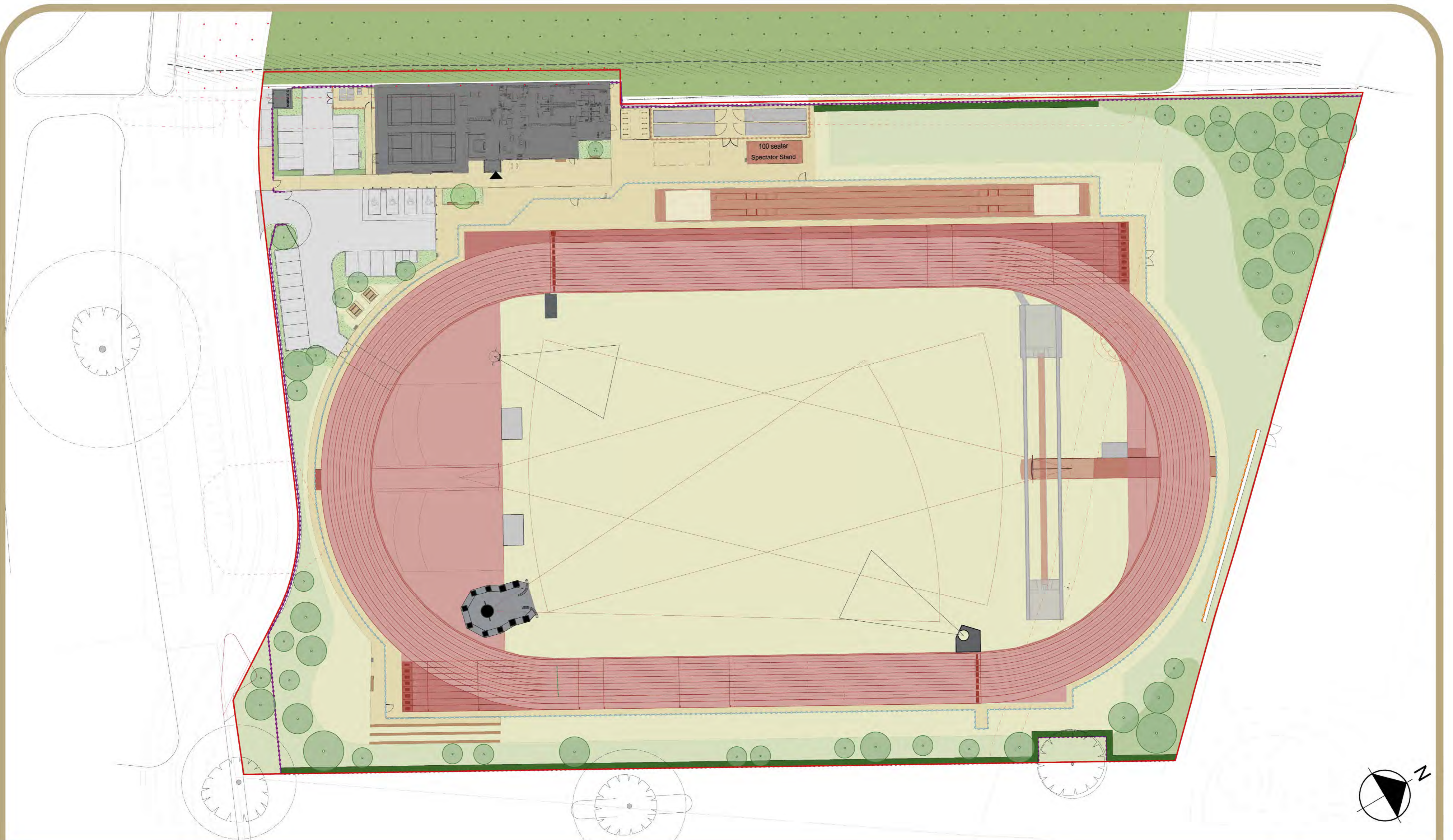
The New Track and Field

Key Features:

- A new 8-lane, 400m athletics track designed to SAPCA and Sport England standards.
- A 10-lane, 100m sprint straight supporting training and competition use.
- Full field event provision including jumps, throws, pole vault, high jump, shot put, discus, hammer, javelin, and steeplechase.
- Track and facilities designed for efficient athlete circulation and clear spectator visibility.
- Track orientation aligned to minimise the impact of low sun and improve usability.
- Integrated cut-and-fill design, setting the track within existing site levels to reduce earthworks.
- Strategic placement of field events between the sprint straight and spectator areas for efficiency and viewing.
- Provision for spectator areas with potential for future expansion.



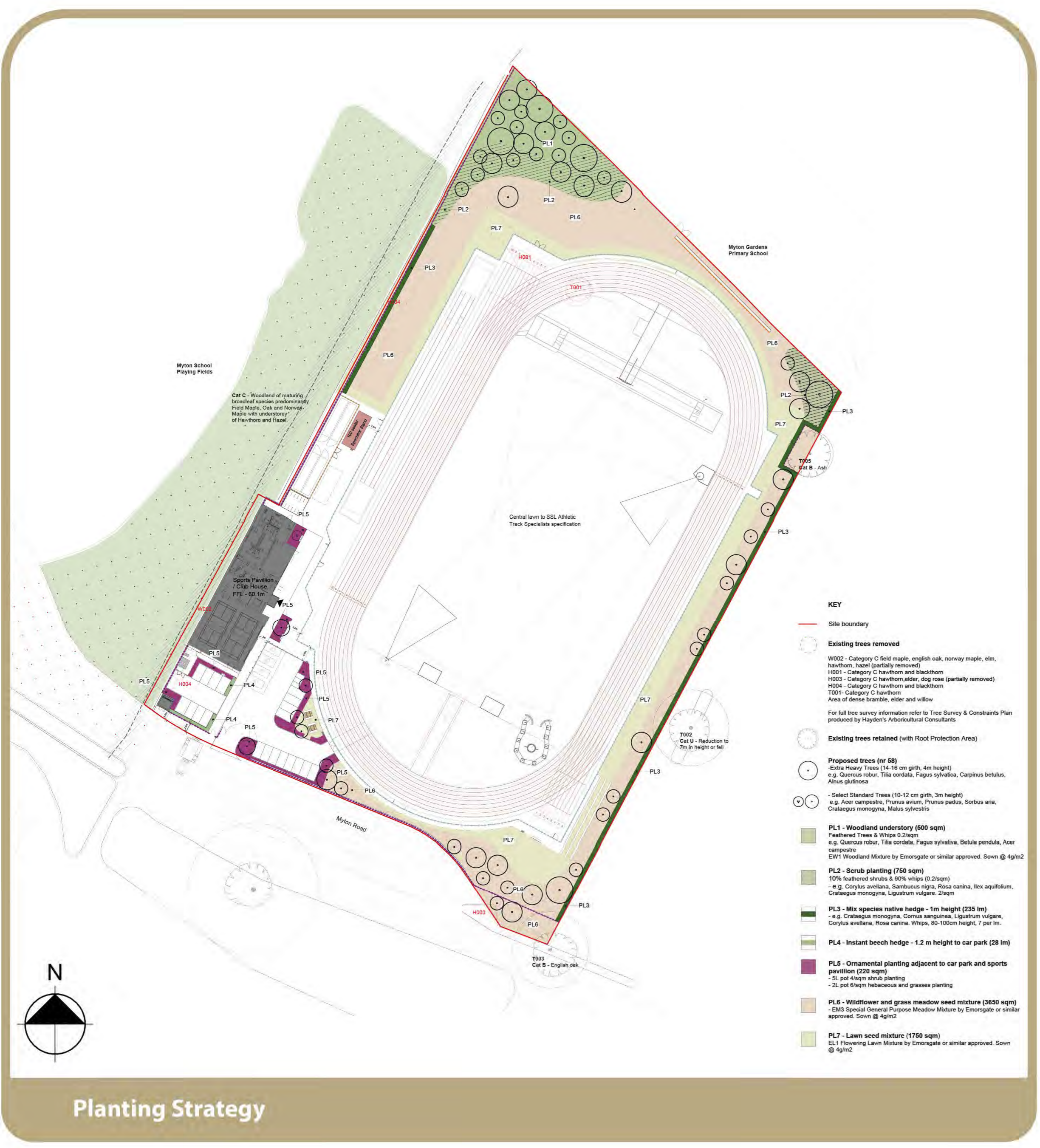
Illustrative example: Cleavley Athletics Track, Eccles



Landscape General Arrangement Plan

MYTON ATHLETIC FACILITY

Ecology & Biodiversity



The proposals have been carefully developed to enhance the ecological value of the site while creating a high-quality new sports facility. Existing landscape features have been considered throughout the design process, helping retain and strengthen natural habitats.

Most of the established woodland along the western boundary will be retained, preserving an important green edge and wildlife corridor.

New planting will be introduced across the site, including 235 linear metres of native species-rich hedgerows and 750m² of new scrub planting, helping to create new habitats and improve connectivity for wildlife.

Additional meadow grassland and ornamental planting will provide seasonal interest, support pollinators, and create an attractive setting for visitors.

The scheme has been designed to deliver a measurable Biodiversity Net Gain, ensuring the site's ecological value is improved for the future.



Illustrative view of the proposals

MYTON ATHLETIC FACILITY

External and Internal Visuals

