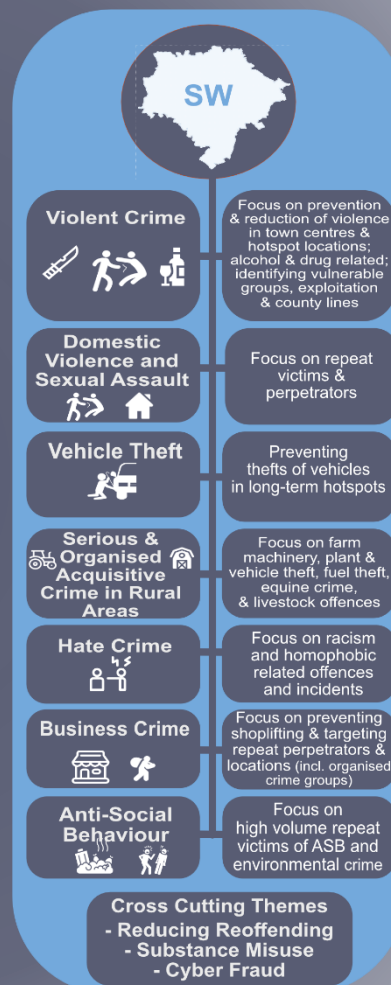


South Warwickshire CSP Strategic Assessment 2025/26 to 2028/29



Confirmed Priorities



OFFICIAL

This document is only to be distributed to members of the Community Safety Partnership and should be handled in accordance with OFFICIAL Government Security Classifications guidance. Please do not disseminate or reproduce this document further without the permission of contributing agencies.





Disclaimer

This report has been prepared by Business Intelligence, Warwickshire County Council, with all reasonable skill, care, and diligence. We accept no responsibility of whatsoever nature to any third parties to whom this report, or any part thereof, is made known. Any such party relies on the report at their own risk.

Copyright Statement

The copyright for this publication rests with Warwickshire County Council. This publication may be used for research, private study or for internal circulation within an organisation. The report includes Crown copyright and OS copyright information, used with permission. Any material that is reproduced from this report must be quoted accurately and not used in a misleading context. The copyright must be acknowledged and the title of the publication specified.

Time Period

The examined period for this Strategic Assessment document is 1st August 2023 – 31st July 2024, with more recent data used where available. Certain data sets were not available between these dates so where alternative time periods have been used they have been outlined within the report.

Notes to the Data

Where 'Rate per 1,000 Population' is shown, this is based on ONS Annual Mid-Year 2023 Population Estimates. Partnership data has been obtained from a number of community safety partners in Warwickshire and is referenced throughout the full Strategic Assessment report.

In addition, virtual and online consultations took place in May and June 2024 for this year's Strategic Assessment process to ensure that all available information was gathered and used in the analysis. The Warwickshire Your Say on Community Safety Survey was also conducted in July 2024, with resident responses used to further inform this analysis.

Produced by CSP Analysts in Warwickshire Business Intelligence, Warwickshire County Council





Introduction

Community Safety Partnerships (CSPs) are statutorily responsible for formulating and implementing strategies for:

- The reduction of crime and disorder (including anti-social and other behaviour adversely affecting the local environment)
- Combatting the misuse of drugs, alcohol and other substances
- The reduction of reoffending
- Preventing people from becoming involved in serious violence and reducing instances of serious violence

The CSP must produce or procure a Strategic Assessment to inform its priorities and to update the Partnership Plan (also locally known as the “Community Safety Plan”) which sets out what the CSP is doing to address these priorities. Following a comprehensive review of the Strategic Assessment process in Warwickshire during 2020 it was agreed that a full document will be produced for each CSP on a four yearly basis. MoRiLE scoring is also carried out every two years with all CSP partners as part of the Warwickshire CSP Strategic Assessment process. The Strategic Assessment and Partnership Plan are reviewed annually against in-year reporting. These annual and biennial processes enable any emerging issues to be identified and to inform any new proposed priorities, ensuring the Strategic Assessment and Partnership Plan remain valid.

The purpose of this report is to provide the CSP with:

- 1. A review of the current 2021/22 - 2024/25 priorities**
- 2. Analysis of crime and disorder to inform priority setting**
- 3. The identification of any emerging themes for consideration**
- 4. A series of tailored recommendations**
- 5. Proposal for the suggested 2025/26 - 2028/29 priorities**

As requested by the South Warwickshire CSP in May 2025, this sanitised version of the full South Warwickshire CSP Strategic Assessment 2025-29 has been produced to inform the South Warwickshire Overview and Scrutiny Committee in May 2025. The full written analysis and infographics have been removed due to the sensitive nature of this information and in line with data sharing agreements.



Home Office Changes & Caveats

The following changes have affected volumes of recorded offences within the time period covered in this report – from April 2022:

- June 2022 – New offence of ‘Non-fatal strangulation and suffocation’ (included within Domestic Abuse offences)
- May 2023 – Principle Crime Rule reversing the amendments made in 2018 for stalking, harassment and controlling and coercive behaviour. Previously these offences were recorded in addition to the most serious notifiable offence. However, this is now no longer the case and has contributed to a reduction in overall volumes of offences, most notably within domestic abuse trends.
- May 2023 – new guidance amending the threshold for Malicious Communications. This has increased the threshold and is likely to have led to a reduction in overall volumes of offences, most notably within domestic abuse trends.
- May 2023 – burglary classifications amended to Residential Burglary – home; Residential Burglary – unconnected building; Burglary Business & Community.

MoRiLE Scoring

MoRiLE¹ (Management of Risk in Law Enforcement) Thematic Guidance specifically for CSPs was introduced in 2020 to assist CSPs with the setting of priorities, strategic planning and allocation of resources. This guidance was first used as part of the 2021-25 Strategic Assessment process to assess the level of risk for Warwickshire community safety themes. Countywide MoRiLE scoring sessions were held in September 2024 with partners and specialists, and the themes were grouped using a red, amber and green colour-coded risk banding system, following the guidance. These risk bands are used to guide prioritisation, with detailed analysis within the full Strategic Assessment report informing whether these are current or emerging issues for the CSP.

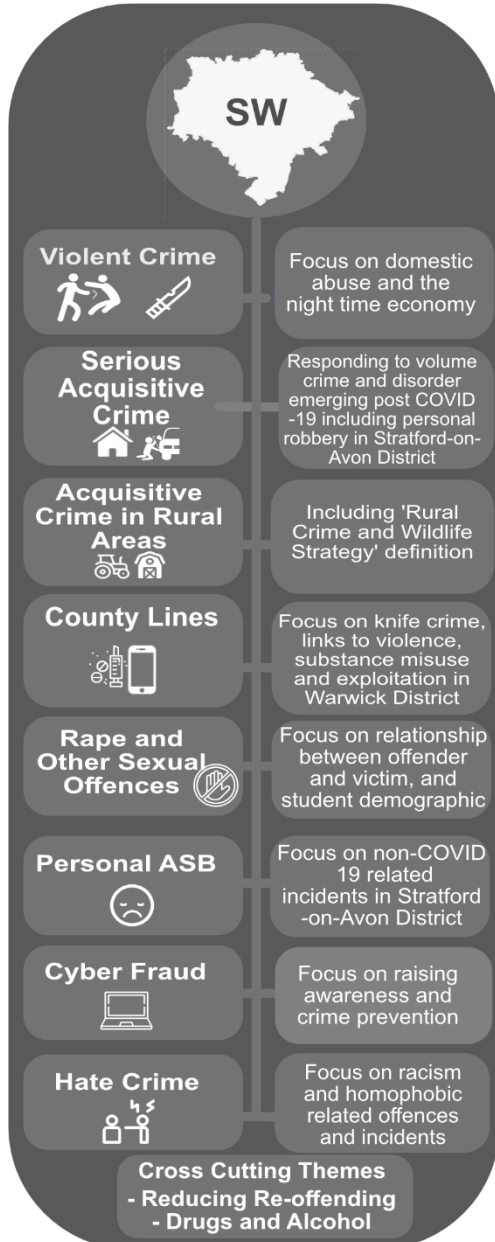
¹ <https://assets.publishing.service.gov.uk/media/5a7ae9a7e5274a34770e7ffd/Tactical-MoRiLE-Scoring-Standards-v1.0EXT.pdf>



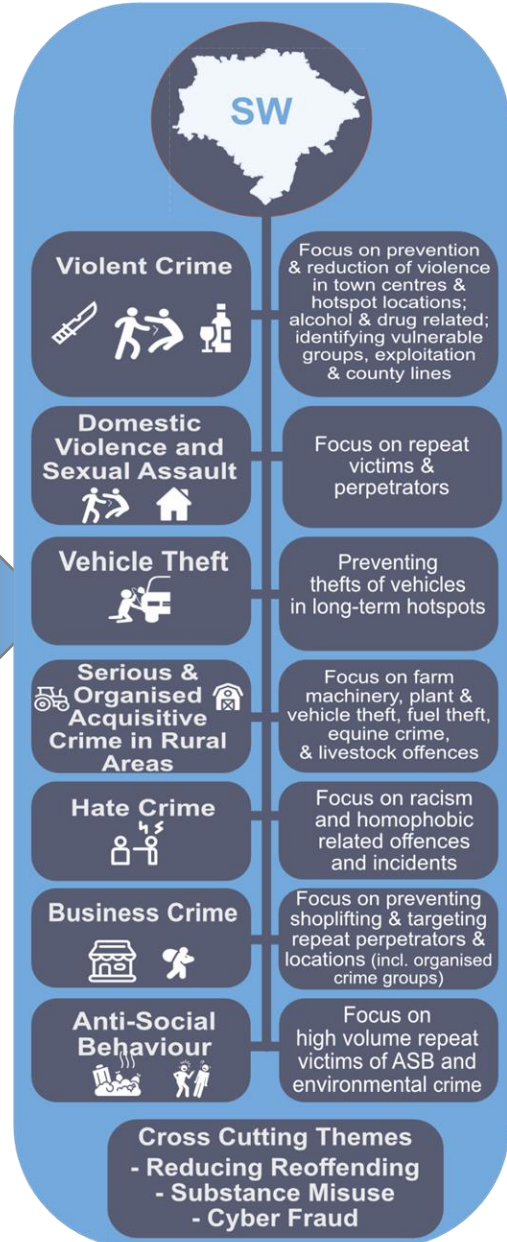
Priorities – Previous (2021/22 – 2024/25) and Confirmed for 2025/26-2028/29

The below illustrates the previous priorities for 2021/22 to 2024/25 and the confirmed priorities for 2025/26 to 2028/29. The new priorities for 2025/26 to 2028/29 were agreed by the South Warwickshire CSP Board on 25th February 2025.

Previous Priorities for 2021/22 to 2024/25



Confirmed Priorities for 2025/26 to 2028/29





Additional Themes of note to the CSP (incorporating Cross Cutting Themes)

Cross-Cutting Theme: Reducing Reoffending

Written analysis has been removed from this section as part of the sanitisation process.

Theme of Note: Harmful Practices

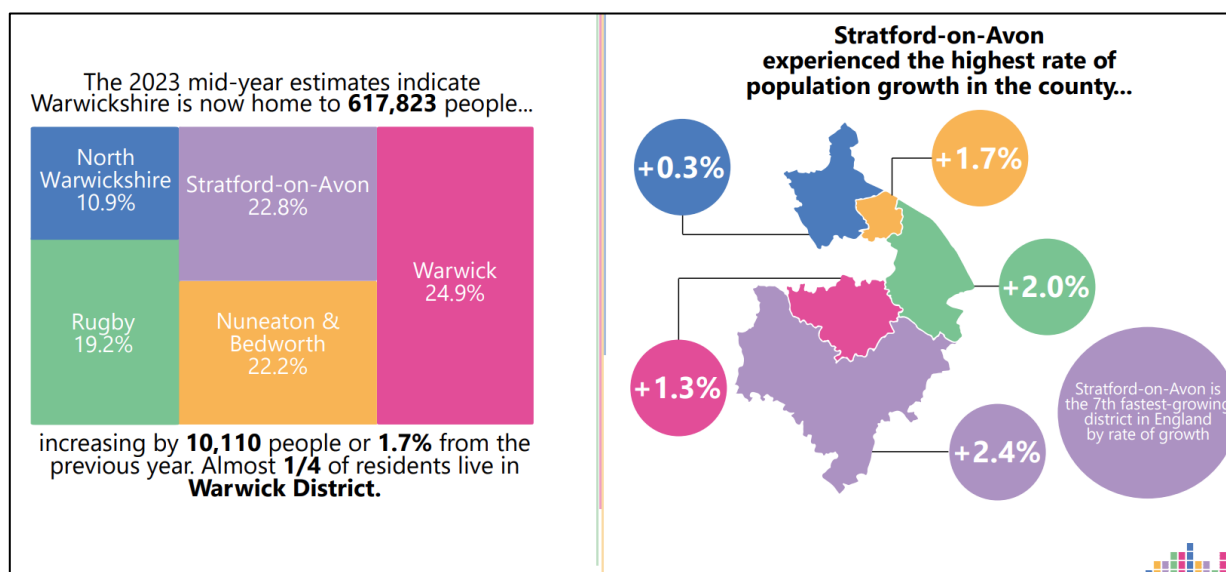
Written analysis has been removed from this section as part of the sanitisation process.

Strategic Recommendations:

- SW CSP to continue with 'Reducing Reoffending' as a cross-cutting theme.
- It is recommended that the IOM Delivery Board investigate the high reoffending rate and high number of reoffences per reoffender for adults in Warwick District and seek to understand the reasons behind the high levels being recorded.
- It is recommended that the Reoffending Tracker is used regularly by Youth Justice Service teams to help identify early issues in order to help improve reoffending performance and outcomes for individuals, liaising with CSP agencies where appropriate on a case-by-case basis.
- SW Community Safety Partners to continue to identify vulnerable communities where awareness and support services should be promoted. Engage with the VAWG Board where this community safety theme is addressed.

Theme of Note: Population Growth

It is of note to the CSP that Stratford-on-Avon District has seen the highest rate of population growth in the county in recent years, and is the 7th fastest growing district in England based on rate of growth. This is likely to be a contributing factor to some increases in crime volumes and rates outlined in this report. The infographic below highlights this growth.



Source: Warwickshire Mid-Year 2023 Population Estimates Briefing Note, WCC BI Team October 24 – based on ONS data from the 2021 Census.



Current Priority – Violent Crime - Focus on Domestic Violence and the Night Time Economy (NTE)

Written analysis has been removed from this section as part of the sanitisation process.

Strategic Recommendations:

- SW CSP to consider 'Domestic Violence' as a separate priority for the CSP in line with the different themes. It is also recommended that the CSP consider a specific focus on 'repeat victims and perpetrators'.
- SW CSP to amend the current 'Violence' priority to focus on 'prevention and reduction of violence in town centres and hotspots'.
- SW CSP to continue to encourage residents from rural locations and older people to report domestic violence offences.
- SW CSP to continue focused interventions with young people aged under 18 who are frequenting Stratford town centre and are involved in altercations with other young people.

Current Priority - Serious Acquisitive Crime – Focus on Residential Burglary (Dwelling), Vehicle Offences and Personal Robbery

Written analysis has been removed from this section as part of the sanitisation process.

Strategic Recommendations:

- SW CSP to consider reframing the Serious Acquisitive Crime priority to 'Vehicle Theft' focusing on 'long-term hotspots'.
- SW CSP to focus on the prevention of thefts of vehicles (including via residential dwelling burglary) at South Warwickshire locations along the western borders, specifically those areas that border the West Midlands, Worcestershire and Gloucestershire.
- SW CSP to monitor trends in thefts from vehicles locally through regular performance processes and respond with appropriate crime prevention.
- 'Personal Robbery' to be removed as a priority focus but to continue crime prevention activity at open spaces in the districts to prevent personal robbery offences.



Current Priority – Acquisitive Crime in Rural Areas – Including ‘Rural Crime’

Written analysis has been removed from this section as part of the sanitisation process.

Strategic Recommendations:

- ‘Acquisitive crime and rural crime types in rural areas’ to continue as a priority focus for the SW CSP but to be re-framed as ‘Serious and Organised Acquisitive Crime in Rural Areas’.
- SW CSP to support the development and delivery of the Warwickshire Rural Crime Strategy, including crime prevention communications.
- CSP Analysts to analyse acquisitive crime in rural areas when the new 2021 Census Rural Classification is available from the ONS to identify any new rural crime hotspots.

Current Priority – County Lines – Focus on Knife Crime, Links to Violence, Substance Misuse and Exploitation in Warwick District

Written analysis has been removed from this section as part of the sanitisation process.

Strategic Recommendations:

- SW CSP to consider amending this priority to be a focus area of the overall ‘Violence’ priority, due to the clear links to violence.
- SW CSP to engage with early primary interventions to prevent and reduce young people’s involvement in youth violence.

Current Priority – Rape and Sexual Offences in South Warwickshire

Written analysis has been removed from this section as part of the sanitisation process.

Strategic Recommendation:

- SW CSP to consider removing the current priority of ‘Rape and Other Sexual Offences’ and co-ordinate prevention activity with the countywide RASSO Steering Group that links into the VAWG strategy.



Current Priority – Personal ASB in Stratford-on-Avon District

Written analysis has been removed from this section as part of the sanitisation process.

Strategic Recommendations:

- 'Personal ASB in Stratford-on-Avon District' to remain as a priority for SW CSP but to be a priority for both districts within an overall 'Anti-Social Behaviour' priority.
- SW CSP to consider focused resources and appropriate targeted interventions for high volume repeat victims of personal ASB in both districts.

Current Priority – Hate Crime

Written analysis has been removed from this section as part of the sanitisation process.

Strategic Recommendations:

- 'Hate Crime' to continue as a priority for SW CSP with a focus on racism and homophobia, whilst continuing to engage with the Hate crime Partnership to respond to emerging issues.
- MoRiLE discussion highlighted a need to identify partnership data that will help to inform trends around hate crime and PREVENT in relation to psychological impact such as fly-posting and graffiti. Therefore, SW CSP to consider collecting additional data for adoption on to the Hate Crime Dashboard. This will help to understand hate related attitudes and inform crime prevention messages.

Current Priority – Cyber Fraud

Written analysis has been removed from this section as part of the sanitisation process.

Strategic Recommendations:

- 'Cyber Fraud' to be removed as a priority for SW CSP and adopted as a cross-cutting theme.
- Crime prevention messaging to focus on young people (specifically males) to advise them against requesting and sharing sexually explicit photos via social media.
- SW CSP Board members to use their influence to encourage national activity in relation to the Online Safety Act.



Emerging Theme – Non-Domestic Serious Violence in Stratford-on-Avon District

Written analysis has been removed from this section as part of the sanitisation process.

Strategic Recommendation:

- SW CSP to consider focusing on 'Serious Violence in Stratford-on-Avon District' within the 'Violence' priority, specifically relating to the town centre and hotspot locations.

Emerging Theme – Substance Misuse

Written analysis has been removed from this section as part of the sanitisation process.

Strategic Recommendation:

- SW CSP to adopt 'Substance Misuse' as a focus area within the 'Violence' priority and retain as an overall cross-cutting theme.

Emerging Theme – Business Crime

Written analysis has been removed from this section as part of the sanitisation process.

Strategic Recommendations:

- SW CSP to adopt 'Business Crime' as a priority, with a focus on 'preventing shoplifting and targeting repeat perpetrators and locations, including organised crime groups'.
- SW CSP to consider focused targeting of long-term prolific shoplifters who continue to commit high volumes of offences, considering options to deter reoffending.
- SW CSP to consider appropriate methods to effectively measure partnership activity relating to this priority area.
- SW CSP to engage with the Retail and Business Crime Reduction Partnership (as per the Warwickshire Police and Crime Plan 2025-29).



Emerging Theme – Environmental ASB

Written analysis has been removed from this section as part of the sanitisation process.

Strategic Recommendations:

- SW CSP recommended to adopt 'Anti-Social Behaviour' as a new priority with a specific focus on 'Environmental ASB'.
- SW CSP to consider installing cameras at the main fly-tipping hotspots and along key routes to identify offenders and prevent further incidents.
- SW CSP to monitor fly-tipping through monthly and quarterly processes, and the ASB Dashboard, to identify key hotspots for crime prevention activity.
- SW CSP to continue to urge the Government to review sentencing guidelines for fly-tipping, so that offenders are given bigger fines for more serious offences to act as a deterrent.

Emerging Theme – Road Safety - Focus on Road Traffic Accidents Resulting in Killed and Seriously Injured (KSI)

Written analysis has been removed from this section as part of the sanitisation process.

Strategic Recommendations:

- SW CSP to continue to engage and support the work of the Warwickshire Road Safety Partnership.
- Preventative work to be focused on risk groups identified in this analysis, including pedestrians.



Recommendations Table

Recommendations for 2025/26 - 28/29 are listed in the table below and were adopted or rejected at the South Warwickshire CSP Board on 25th February 2025.

Section	Recommendation	Action Assigned to	Adopt/Reject
Reducing Reoffending	SW CSP to continue with 'Reducing Reoffending' as a cross-cutting theme.	SW CSP Board	Adopt
	It is recommended that the IOM Delivery Board investigate the high reoffending rate and high number of reoffences per reoffender for adults in Warwick District and seek to understand the reasons behind the high levels being recorded	IOM Delivery Board	Adopt
	It is recommended that the Reoffending Tracker is used regularly by Youth Justice Service teams to help identify early issues in order to help improve reoffending performance and outcomes for individuals, liaising with CSP agencies where appropriate on a case-by-case basis.	YJS	Adopt
Harmful Practices	SW Community Safety Partners to continue to identify vulnerable communities where awareness and support services should be promoted. Engage with the VAWG Board where this community safety theme is addressed.	SW CSP	Adopt
Violent Crime with a focus on DV and town centre violence	SW CSP to consider 'Domestic Violence' as a separate priority for the CSP in line with the different themes. It is also recommended that the CSP consider a specific focus on 'repeat victims and perpetrators'.	SW CSP Board	Adopt
	SW CSP to amend the current 'Violence' priority to focus on 'prevention and reduction of violence in town centres and hotspots'.	SW CSP Board	Adopt
	SW CSP to continue to encourage residents from rural locations and older people to report domestic violence offences.	SW CSP	Adopt
	SW CSP to continue focused interventions with young people under 18 who are frequenting Stratford town centre and are involved in altercations with other young people.	SW CSP (CSP Board acknowledged that good practice is already in place)	Adopt
SAC with a focus on residential burglary dwelling, personal robbery and vehicle offences	SW CSP to consider reframing the SAC priority to 'Vehicle Theft' focusing on 'long-term hotspots'.	SW CSP Board	Adopt
	SW CSP to focus on the prevention of thefts of vehicles (including via residential dwelling burglary) at South Warwickshire locations along the western borders, specifically West Midlands, Worcestershire and Gloucestershire.	SW CSP	Adopt



OFFICIAL

	SW CSP to monitor trends in thefts from vehicles locally at SWOP meetings and respond with appropriate crime prevention.	SW CSP	Adopt
	Personal Robbery to be removed as a priority focus but to continue crime prevention activity at open spaces in the districts to prevent personal robbery offences.	SW CSP Board	Adopt
Acquisitive crime in rural areas (including 'rural crime')	'Acquisitive crime and rural crime types in rural areas' to continue as a priority focus for the SW CSP but to be re-framed as 'Serious and Organised Acquisitive Crime in Rural Areas'.	SW CSP Board <i>(removed 'fly-tipping' from the focus area as this is not acquisitive crime)</i>	Adopt
	SW CSP to support the development and delivery of the Warwickshire Rural Crime Strategy, including crime prevention communications.	SW CSP	Adopt
	CSP Analysts to analyse acquisitive crime in rural areas when the new 2021 Census Rural Classification is available from the ONS.	CSP Analysts	Adopt
County Lines – focus on identifying vulnerable groups, links to violence and substance misuse	SW CSP to consider amending this priority to be a focus area of the overall 'Violence' priority, due to the clear links to violence.	SW CSP Board	Adopt
	SW CSP to engage with early primary interventions to prevent and reduce young people's involvement in youth violence.	SW CSP	Adopt
Rape and Other Sexual Offences	SW CSP to consider removing the current priority of 'Rape and Other Sexual Offences' and co-ordinate prevention activity with the countywide RASSO Steering Group that links into the VAWG strategy.	SW CSP Board	Reject-remain a priority but within the 'Domestic Violence' Priority
Personal ASB in Stratford-on-Avon District	'Personal ASB in Stratford-on-Avon District' to remain as a priority for SW CSP but to be a priority for both districts within an overall 'Anti-Social Behaviour' priority.	SW CSP Board	Adopt
	SW CSP to consider focused resources and appropriate targeted interventions for high volume repeat victims of personal ASB.	SW CSP	Adopt
Hate Crime	'Hate crime' to continue as a priority for SW CSP with a focus on racism and homophobia, whilst continuing to engage with the Hate crime Partnership to respond to emerging issues.	SW CSP Board	Adopt
	SW CSP to consider collecting additional data for adoption on to the Hate Crime Dashboard. This reflects the need to identify trends around the psychological impact of hate crime and PREVENT linked to fly-posting and graffiti. This will help to	SW CSP	Adopt



OFFICIAL

	understand hate related attitudes and inform crime prevention messages.		
Cyber Fraud	'Cyber Fraud' to be removed as a priority for SW CSP and adopted as a cross-cutting theme.	SW CSP Board	Adopt
	Crime prevention messaging to focus on young people (specifically males) to advise them against requesting and sharing sexually explicit photos via social media.	SW CSP	Adopt
	SW CSP Board members to use their influence to encourage national activity in relation to the Online Safety Act.	SW CSP Board	Adopt
Non-Domestic Serious Violence in Stratford-on-Avon District	SW CSP to consider focusing on 'Serious Violence in Stratford-on-Avon District' within the 'Violence' priority, specifically relating to the town centre and hotspot locations.	SW CSP Board	Adopt
Substance Misuse	SW CSP to adopt 'Substance Misuse' as a focus area within the 'Violence' priority and retain as an overall cross-cutting theme.	SW CSP Board	Adopt
Business Crime	SW CSP to adopt 'Business Crime' as a priority, with a focus on 'preventing shoplifting and targeting repeat perpetrators and locations, including organised crime groups'.	SW CSP Board <i>(agreed to add 'including organised crime groups')</i>	Adopt
	SW CSP to consider focused targeting of long-term prolific shoplifters who continue to commit high volumes of offences, considering options to deter reoffending.	SW CSP	Adopt
	SW CSP to consider appropriate methods to effectively measure partnership activity relating to this priority area.	SW CSP	Adopt
	SW CSP to engage with the Warwickshire Retail and Business Crime Reduction Partnership (as per the Warwickshire Police and Crime Plan 2025-29).	SW CSP	Adopt
Environmental ASB	SW CSP recommended to adopt 'Anti-Social Behaviour as a new priority, with a specific focus on 'Environmental ASB'.	SW CSP Board	Adopt
	SW CSP to consider installing cameras at the main fly-tipping hotspots and along key routes to identify offenders.	SW CSP (including Environmental Health)	Adopt
	SW CSP to monitor fly-tipping through monthly and quarterly processes, and the ASB Dashboard, to identify key hotspots for crime prevention activity.	SW CSP	Adopt
	SW CSP to continue to urge the Government to review sentencing guidelines for fly-tipping, so that offenders are given bigger fines for more serious offences to act as a deterrent.	SW CSP Board	Adopt



OFFICIAL

Road Safety - KSIs	SW CSP to continue to engage and support the work of the Warwickshire Road Safety Partnership.	SW CSP Board	Adopt
	Preventative work to be focused on risk groups identified in this analysis, including pedestrians.	SW CSP	Adopt