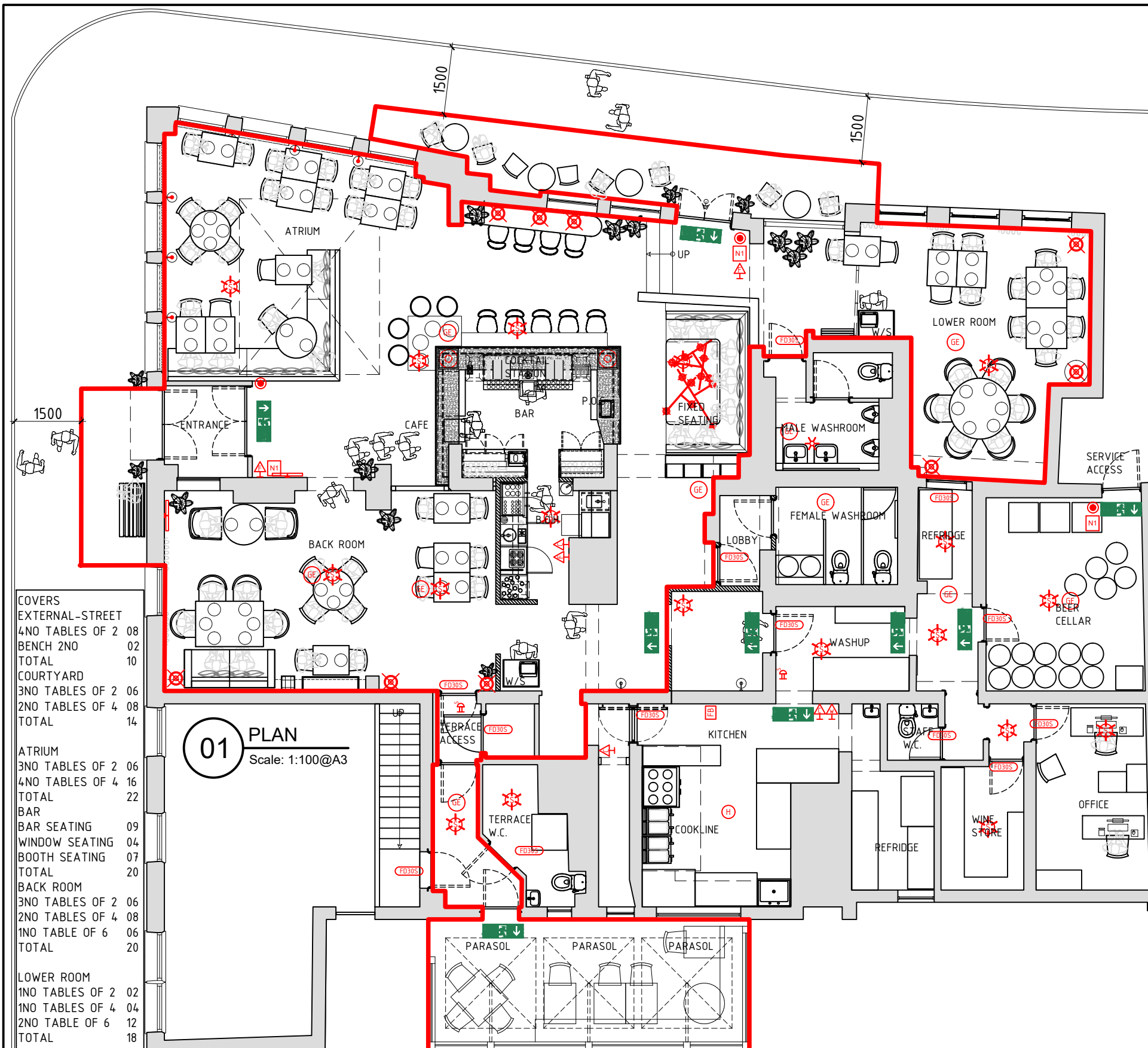


GENERAL NOTES:

1. ALL DIMENSIONS IN MM. ALL MEASUREMENTS MUST BE CHECKED ON SITE PRIOR TO COMMENCING WORKS AND ANY DISCREPANCIES BROUGHT TO THE ATTENTION OF THE DESIGNER. DO NOT SCALE OFF THE DRAWING.
© COPYRIGHT FABER CONTRACTS LTD T/A FABER DESIGN & ARCHITECTURE



COVERS	
EXTERNAL-STREET	
4NO TABLES OF 2	08
BENCH 2NO	02
TOTAL	10
COURTYARD	
3NO TABLES OF 2	06
2NO TABLES OF 4	08
TOTAL	14
ATRIUM	
3NO TABLES OF 2	06
4NO TABLES OF 4	16
TOTAL	22
BAR	
BAR SEATING	09
WINDOW SEATING	04
BOOTH SEATING	07
TOTAL	20
BACK ROOM	
3NO TABLES OF 2	06
2NO TABLES OF 4	08
1NO TABLE OF 6	06
TOTAL	20
LOWER ROOM	
1NO TABLES OF 2	02
1NO TABLES OF 4	04
2NO TABLES OF 6	12
TOTAL	18
GRAND TOTAL	104

01 PLAN
Scale: 1:100@A3

MEANS OF ESCAPE

FIRE DOORS TO BE HALF HOUR FIRE RESISTING, SELF CLOSING AND INDICATED BY SIGNS STATING 'FIRE DOOR KEEP CLOSED'. DOORS TO SATISFY BS476 PART 22: 1987 AND BE FD30/30 STANDARD. DOORS PROTECTING MEANS OF ESCAPE SHOULD BE FITTED WITH INTUMESCENT STRIPS AND COLD SMOKE SEALS.

STRUCTURES IN RED ARE JUDGED TO BE A REASONABLE FIRE RESISTING STANDARD FOR PURPOSES OF MEANS OF ESCAPE OR FIRE COMPARTMENTATION.

INNER WALL SURFACES IN ALL AREAS SHOULD BE CLASS 1 SURFACE SPREAD OF FLAME PROPAGATION BS 476-6,7

FIRE ALARM BUILDING TO BE FITTED WITH FIRE ALARM SYSTEM CONFORMING TO PART L5 OF BS 5839-1:2002 FIRE DETECTION AND FIRE ALARM SYSTEMS FOR BUILDINGS.

MANUAL CALL POINTS (BREAK GLASS SENSORS) TO BE TESTED BI-WEEKLY.

FIRE FIGHTING EQUIPMENT ALL FIRE FIGHTING EQUIPMENT TO BE SET SO THAT THE CARRY HANDLES ARE LOCATED 1.5M ABOVE FLOOR LEVEL.

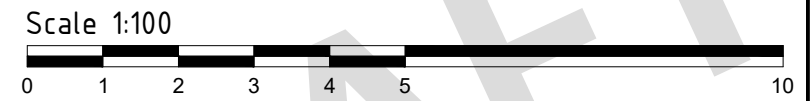
ALL EQUIPMENT TO BE SUBJECT TO ANNUAL TESTING BY A COMPETENT PERSON.

EMERGENCY LIGHTING PREMISES TO BE COVERED WITH EMERGENCY LIGHTING TO STANDARD SET OUT IN BS 5266: PART 1:2002 THE CODE OF PRACTICE FOR THE EMERGENCY LIGHTING OF PREMISES OTHER THAN CINEMAS.

NOTE:
ALL NEW EMERGENCY EQUIPMENT TO BE LINKED TO EXISTING FIRE ALARM SYSTEM, SITE DEPENDENT.
SPRINKLERS SHOWN ARE INDICATIVE NOT FOR CONSTRUCTION AND REMAIN LIABILITY OF SPECIALIST CONSULTANT AND FULL APPROVALS BY REQUIRED BODIES AND LEGISLATION.

FIRE SAFETY KEY

	AREA TO BE COVERED BY A HEAT DETECTOR
	AREA TO BE COVERED BY SMOKE DETECTOR WITH 2 DETECTION METHODS & AUDIBLE ALARM SOUNDER.
	30 MINUTE INTEGRITY/30 MINUTE INSULATION FIRE DOOR WITH SMOKE SEALS AND FITTED WITH A SELF CLOSING DEVICE
	EMERGENCY LIGHTING ILLUMINATED EXIT BOX
	EMERGENCY LIGHTING ILLUMINATED DIRECTIONAL EXIT BOX
	DISABLED REFUGE POINT
	GENERAL EMERGENCY LIGHTING - (TO BE RECESSED LED)
	FIRE NOTICE GENERAL NOTICE
	FIRE NOTICE FIRE EXIT KEEP CLEAR NOTICE
	LICENSED AREAS
	9ltr WATER EXTINGUISHER (CLASS A FIRES)
	FOAM EXTINGUISHER (CLASS A & B FIRES)
	POWDER EXTINGUISHER (CLASS A, B & C FIRES)
	2kg CO2 EXTINGUISHER (CLASS B & ELECTRICAL)
	WET CHEMICAL EXTINGUISHER (CLASS A & F FIRES)
	WATER MIST EXTINGUISHER (CLASS A, B, C, F & ELECTRICAL FIRES)
	FIRE BLANKET
	MANUAL CALL POINT
	FIRE ALARM SOUNDER
	FIRE ALARM SPEAKER
FIRE CLASSES	
A	FIRES INVOLVING SOLID MATERIALS SUCH AS WOOD, PAPER OR TEXTILES
B	FIRES INVOLVING FLAMMABLE LIQUIDS SUCH AS PETROL, DIESEL OR OILS
C	FIRES INVOLVING GASES
D	FIRES INVOLVING FLAMMABLE METALS
F	FIRES INVOLVING COOKING OILS
	FIRES INVOLVING ELECTRICAL EQUIPMENT



Drawing Status: **100% DETAILED DESIGN**



Faber and Company
215 Zellig, The Custard Factory
Gibb Street, Birmingham, B9 4AA
Email: info@faber.design
www.faber.design

A1	FOR REVIEW & APPROVAL	22.12.23
Rev	Description	Date

Client / Project: WINDMILL HILL BREWING CO.
44 CLARENDON STREET, LEAMINGTON SPA

Title: PROPOSED LICENSING PLAN

MD	-	1:100 @ A3	1448	110	A1
DRAWN	CHECKED	SCALE	PROJECT	DRAWING NUMBER	REV