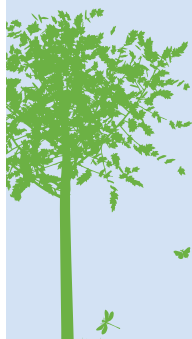


Parks and Gardens in Warwick District Summer 2022



www.warwickdc.gov.uk



Welcoming the Birmingham 2022 Commonwealth Games

Royal Leamington Spa's Victoria Park is the official venue for the Lawn and Para Lawn Bowls competitions which take place from **29 July to 6 August**. The Park will remain open during these times but parking in nearby roads and car parks including Archery Road, Princes Drive and Adelaide Bridge will be restricted from mid-July to mid-August. The newly refurbished children's play area and paddling pool will remain open. The Pump Room Gardens will become a Festival Site where you can watch the excitement of the Games' competitions live on the Big Screen with a number of food and drink stalls on site.

On **Sunday 7 August** Myton Fields in Warwick will host the start and finish of the men's and women's Cycling Road Races, with 160 competitors completing laps (7 for women, 10 for men) of a route around Warwick, Hampton on the Hill and Leamington Spa. St Nicholas Park will remain open to visitors throughout the event, but the car park and other central car parks in Warwick will be closed on the day of the races. There will also be road closures in place around the route. The Myton Fields car park will be closed on 26 July and from **2 to 12 August**. Between **27 July** and **1 August** there will be limited parking spaces available.

For more details visit
birmingham2022.com/getset

In addition to the sites being used for the Games our district has a wealth of award-winning public parks, gardens, woodlands and nature reserves perfect for walking, exploring, play or relaxation, with the major public spaces listed in this leaflet.

Further information is available by visiting
warwickdc.gov.uk/parks



Jephson Gardens

A beautiful formal Victorian park in the centre of Leamington Spa. The perfect place for a relaxing stroll or family picnic. Lots of colourful flowerbeds and interesting sculptures make for a great day out. The gardens have been awarded a prestigious Green Flag every year since 2006.

Facilities

Toilets
Café
Sensory Garden
Glasshouse
Art Gallery

Getting there

Newbold Terrace,
Leamington Spa
CV32 4AA

On street parking

Newbold Terrace,
Newbold Street

Nearby car parks

St Peter's (CV32 5EL)
Rosefield Street
(CV32 5AH)

Public Transport

Leamington Spa Railway
Station, 10 minutes' walk
Buses 15, X17, X18



Mill Gardens

Forming part of the Spa Gardens Mill Gardens run along the south bank of the Leam, opposite Jephson Gardens with features including the Mill Bridge (listed grade II) and an 80m long boating pool with boathouse.

Facilities

Children's
playground
Boathouse and
boat hire facilities

Getting there

Mill Road, Leamington
Spa CV31 1BH

On street parking

Mill Road

Nearby car parks

Rosefield Street
(CV32 5AH)
Bath Place (CV32 5AH)

Public Transport

Leamington Spa Railway
Station, 10 minutes' walk
Buses 1, 15, X17, X18



Newbold Comyn

A 300-acre country park and nature reserve on the outskirts of Leamington Spa. A fantastic area for families and dogs with footpath links to Offchurch and amazing views from Observation Hill. As well as a local nature reserve there are a number of play areas, a skatepark, football pitches, model flying area and horse riding routes.



Facilities

Children's playgrounds
Pub
Skate Park
Leisure Centre

Getting there

Newbold Comyn, Leamington Spa,
CV32 4EW



Parking

Free parking on site

Public Transport

Leamington Spa Railway
Station, 30 minutes' walk

Cycle path runs from the centre of
Leamington Spa, along Newbold
Terrace East, and through Newbold
Comyn to Radford Road.

Pump Room Gardens

First opened in 1814 the Pump Room Gardens are widely regarded as Leamington Spa's village green, hosting regular events for the town. The Gardens have recently undergone a £1.4m restoration receiving £1m from the Heritage Lottery Fund, this has seen the rejuvenation of the magnificent Victorian bandstand and the reinstatement of other key features from 19th century.



Facilities

Café and toilets in
adjacent art gallery
and museum.



Getting there

Parade, Leamington
Spa CV32 4AA

On street parking

Newbold Terrace,
Dormer Place

Nearby car parks

Adelaide Bridge*
Princes Drive*

St Peter's (CV32 5EL)
Covent Garden (CV32 5QB)
Upper Grove Street
(CV32 5LW)
Court Street (CV31 2BB)

Public Transport

Leamington Spa Railway
Station, 5 minutes' walk
Buses 15, X17, X18

Victoria Park

As well as being the home of English bowls, Victoria Park is a beautiful tree lined riverside park that is perfect for families and sport. A brand new play area has recently been installed with bespoke tree house, zip wire and accessible equipment for a variety of ages.



Facilities

Café
Toilets
Children's playground
Paddling pool
Skate park



Getting there

Adelaide Road,
Leamington, Spa
CV31 3PW

On street parking

Archery Road

Nearby car parks

Adelaide Bridge*

Princes Drive*

St Peter's (CV32 5EL)
Covent Garden (CV32 5QB)
Upper Grove Street
(CV32 5LW)
Bath Place (CV32 5AH)

Public Transport

Leamington Spa Railway
Station, 10 minutes' walk
Buses 15, X17, X18

* Closed to the public from mid July to mid August, for further information visit birmingham2022.com/getset.

Christchurch Gardens

Known locally as "Top Park" this lovely green space is a popular garden square at the top of the parade with tennis courts and a basketball court.



Facilities

Tennis Courts
Basketball Court
Booking required visit
www.warwickdc.gov.uk/tennis courts



Getting there

Kenilworth Road,
Leamington Spa
CV32 5PP

On street parking

Kenilworth Road,
Beauchamp Avenue

Nearby car parks

Adelaide Bridge*
Princes Drive*
St Peter's (CV32 5EL)

Public Transport

Leamington Spa Railway
Station, 20 minutes' walk
Buses 1, X17, X18



St Nicholas Park

This wonderful riverside park with its wide range of facilities offers a great family day out in Warwick. It's beautiful setting makes it perfect for picnics and the lawns and gardens are ideal for a stroll or sit down. On top of the playground and outdoor paddling pool it has its very own Fun Park complete with rides, games and amusements plus a boating centre with pedaloos, rowing boats and kayaks plus tennis courts and sports pitches.

Facilities

Toilets
Café
Tennis Courts
Basketball
Paddling Pool
Children's playground
Amusements
Mini golf
Leisure Centre

Getting there

Warwick CV34 4QY

Parking

On site car park with additional parking in Myton Fields (CV34 6PP). Myton Fields car park closed 26 July, restricted parking



27 July to 1 August, fully closed 2 to 12 August.

St Nicholas Park Car Park closed 7 August.

Public Transport

Warwick Station 10 minutes' walk
Buses X17, X18



St Mary's Lands

Located within ten minutes' walk of Warwick town centre, with its wide-open spaces, woodland, Grade II listed gardens, racecourse, football and golf club and model aeroplane flying, St Mary's Lands really has something for everyone. On non-race days this is a great area for walking, cycling, running and wildlife watching.



Facilities

Golf Centre
Bar and Café
Toilets



Getting there

Warwick Racecourse,
Hampton St, Warwick CV34 6HN

Parking

Hampton Road (CV34 6JP)
Bread and Meat Close (CV34 6HW)
Vittle Drive (CV34 4UX)

Priory Park

This lovely park with its fascinating history offers a natural open space with meadow and woodland walks right in the town centre.



Getting there

Priory Road Warwick, CV34 4JS

Parking

Priory Road

Public Transport

Warwick Station 5
minutes' walk
Buses 15, X18



Abbey Fields

Set in a dramatic valley enjoying views of the historic town and Kenilworth Castle the grassy slopes of this wonderful park are a perfect location for walking, exploring, playing or relaxing. Because of its important heritage as the farmland of St Mary's Abbey the whole site with its historic buildings and remains is classified as a scheduled ancient monument.



Facilities

Toilets
Café
Children's play area



Getting there

Abbey Fields, Bridge Street,
Kenilworth CV8

Parking

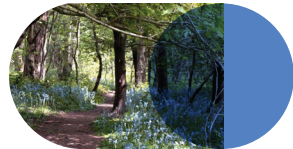
Abbey Fields

Public Transport

Buses 15, X18, X17

Crackley Wood

This ancient woodland is a popular local nature reserve managed in partnership with the Warwickshire Wildlife Trust. Stroll through a network of shady paths and grassy, open glades spotting wildlife.



Facilities

Accessible walking trails
Family adventure trail

Getting there

Crackley Lane, Kenilworth CV8 2JS

Parking

At several points along Crackley Lane

