

# WARWICK DISTRICT GREEN SPACES

September 2021



## In this edition

- Green Space of the Month: Pump Room Gardens
- Keep Connected with our Community Engagement Volunteers
- EcoFest 2021
- Heritage Open Days
- Terrific Trees Quiz
- Music inspired by Jephson Gardens
- Photogrammetry Project
- Nature photo of the month
- A Day in the Life of Kate Livingston



## Green Space of the Month

### Pump Room Gardens

Having been recently restored thanks to a £1m grant from the Heritage Lottery Fund Parks for People programme, with further contributions from the Friends of the Pump Room Gardens and Warwick District Council, this month we wanted to share the fascinating history of this wonderful green space.

The Gardens were first opened in **July 1814**, for the exclusive use of patrons of the Pump Rooms; "to afford them pleasant promenades". The adjoining gardens were planted by John Cullis and a bandstand was erected for military bands to play in summer evenings.

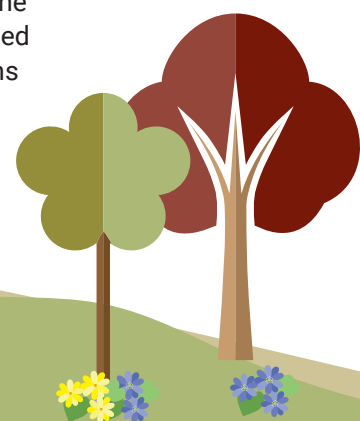
**In 1860**, the then owner the Hon. Charles Bertie Percy of Guy's Cliffe decided to close the gardens so that he could put the land up for sale. The disquiet of the public was voiced in The Courier, and subsequently a new company took over and carried out extensive reconstruction work adding a tower and pediment to the Parade frontage.

**In July 1861** 7000 people gathered to see Charles Blondin, the celebrated French tightrope walker crossing the Gardens on a tightrope 100 feet from the ground.

The Gardens were bought by the Board of Health **in 1868**, to allow free access for all. Prior to this, entry was restricted to subscribers and ticket holders and **in 1878** a rock garden was created with a cascade powered from the Pump Rooms.

The stunning Linden Arches were originally cast by Leamington iron founder William Jenkins **1875**. The avenue created was popular at weekends when young working people would parade up and down it in their best clothes, to attract admiring glances.

**In May 1889** a new bandstand was opened, located in a more central position and manufactured by Walter MacFarlane. The following year the Pump Rooms were further extended with the addition of de Normanville's swimming baths boasting a bath chair ramp allowing access to the York Bridge and Promenade.



# Keep Connected with our Community Engagement Volunteers

This month our Community Engagement Volunteer Rachael shares with us her love of growing vegetables. We hope it inspires you to have a go at home.

Over the 18 months, during lockdown, I have spent a lot of time growing vegetables. Perhaps it's simply because I have been at home more but there's also something very satisfying about seeing something that you've grown from seed ending up on your dinner plate.

For me it's also been the time spent outside nurturing these plants, coaxing them to life, feeling the soil and carefully watching the weather – it's mindfulness at its best. And quite frankly reconnecting with nature has been one of the best things to come out of the last year.

This year's successes include courgettes, potatoes, beetroot, onions and peas that my children pick and eat straight from the plant.

Growing vegetables is not without its challenges. There are the caterpillars (the reason why I have largely given up on brassicas), the constant watering balanced with the fear of overwatering (trying to avoid potato rot), not remembering when you should harvest and desperately looking for the little instruction label which has been carefully stored somewhere safe, never to be found again!

But the satisfaction of seeing green, overflowing vegetable beds, and picking your own food never tires. Everyone can do it, even on a small scale in window boxes, so why not have a go?



## Terrific Trees Quiz

We have such a wonderful variety of trees in the district, but how well do you know our leafy friends?

**1. Which of the following trees does not produce nuts?**

- A. Hazel
- B. Hickory
- C. Juniper
- D. Almond

**2. What does the Latin word 'arboretum' mean?**

- A. Lots of trees
- B. Trees all around
- C. Place with trees
- D. Ample trees

**3. The Midland Oak tree in Lillington is said to mark the centre of what?**

- A. The Earth
- B. England
- C. Warwickshire
- D. West Midlands

**4. 'Araucaria Araucana' is an evergreen tree native to South America and can be found in Jephson Gardens. But what name is this tree more commonly known as?**

- A. Monkey Trick
- B. Monkey Fun
- C. Monkey Maze
- D. Monkey Puzzle

**5. The Japanese word "Sakura" means the blossoming of what kind of tree?**

- A. Cherry
- B. Willow
- C. Magnolia
- D. Maple



Celebrate everything eco at the Pump Room Gardens on Saturday 4 September from 10am to 5pm!

Come and find out more about how you can decrease your carbon footprint, increase your healthy eating and step outside more to explore beautiful local green spaces.

Good for you, good for the planet.

Find out more at [www.warwickdc.gov.uk/ecofest](https://www.warwickdc.gov.uk/ecofest)

A number of local gardens are opening their gates to the public for free as part of the annual Heritage Open Days Festival (10 to 19 September.)

With the increased popularity in gardening over the last year green fingered enthusiasts are being welcomed to look around St Mary's Allotments in Leamington and the Odibourne Allotment site in Kenilworth as well as Guy's Cliffe Walled Garden, Hill Close Gardens, the Master's Garden at the Lord Leicester Hospital, Packwood House and Baddesley Clinton and there's also a guided tour of Jephson Gardens.

Further information <https://www.warwickdc.gov.uk/heritageopendays>





# Music inspired by Jephson Gardens

A new album has recently been produced by local musicians inspired by a chance encounter in Jephson Gardens.

Polish classical guitarist Adam Jurewicz and local musician Jake Wilson met when Jake heard Adam playing guitar in the Gardens. Shortly after, they met Warwick District Council's very own Ranger, Kiril Georgiev, who is also a very talented musician and founder of the Bulgarian folk-group Lot Lorien.

The three musicians decided to reform the band and have since written the album 'Common Ground', inspired by the place they all met. The album's cover and booklet feature infra-red photographs of the gardens' trees, taken by local photographer David Eaves, and the title of the album came from the musicians' shared experience as well as the value of communal outside spaces like Jephson Gardens.

The album can be downloaded here: <https://www.jakewilsonmusic.com/commonground/>



## Photogrammetry Project

The Green Spaces Team have recently collaborated with local tech company RiVR to create detailed 3D digital models of two key heritage features of the Pump Room Gardens.

The bandstand and one of the Linden Arches have been captured

using photogrammetry; a process that involves taking hundreds of overlapping photographs to create detailed measurements of an object, which can then be transformed into a 3D model.

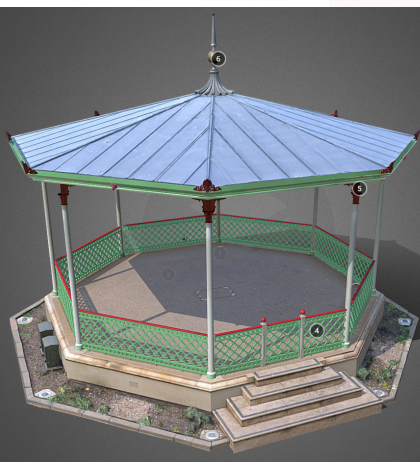
The 3D models now sit on a website and app called Sketchfab, alongside objects from Leamington Spa Art Gallery & Museum, enabling people to explore the details of these wonderful objects and structures, and to learn about their heritage.

This project forms part of the wider Pump Room Gardens restoration project, funded by the National Lottery's Heritage Fund, WDC and the Friends of the Pump Room Gardens. We are thrilled to be able to capture both features in a way that can be shared and enjoyed by people across Warwickshire and beyond.

The models can be viewed here: <https://sketchfab.com/lsagm/models>.

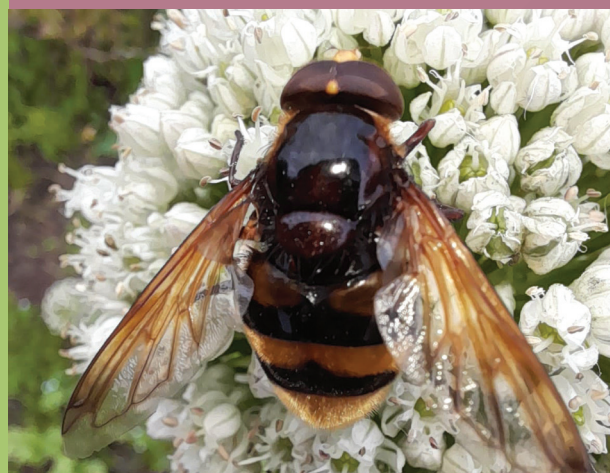
If you want to use Virtual Reality or Augmented Reality to explore the models you will need to download the Sketchfab app.

The AR feature of the app will enable you to place the models in any environment you are in, so why not see how the bandstand looks in your garden or perhaps pop the Linden Arch down your road! You can share your images with us on social media using **@PumpRoomGardens** and **@Warwick\_DC**



## Nature photo of the month

This fantastic photo was taken by Will, who informs us it is a Hornet Mimic Hoverfly resting on a leek seed head. Will says it is 'huge but harmless'. Incredible! Thanks Will.



If you would like your photo to feature in November's newsletter, please email it to [greenspaces@warwickdc.gov.uk](mailto:greenspaces@warwickdc.gov.uk), with the subject 'Newsletter Photo'.

- Please only send one photo at a time, but feel free to share a new one each month!
- Your photo must be of something in nature and/or one of our green spaces.
- Please include your name and 1-2 sentences explaining where you took your photo, which will be included in the newsletter if your photo is selected.

# A day **in the** life of

## Kate Livingston, Event Coordinator



### **Tell us a little about your position and what you do on a day-to-day basis:**

I am an event organiser or festival director. In 2021 I have managed to bring four different events to the town. I work either by myself or in conjunction with other organisations such as Art in the Park or the Green Spaces Team at WDC.

### **What is your favourite part of the day/ your job?**

I love that no one day is the same. I enjoy meeting new people and learning about their passions and giving them a platform to showcase their product, or art.

### **What's the most challenging part of your job?**

Being able to adapt to change and uncontrollable situation quickly.

### **How did you get into this line of work?**

I worked as a curator and ran my own gallery. On top of exhibitions, I also held events in my gallery. I realised it was the events and organising the openings that I loved. I didn't like being tied to one venue, so decided to give my life some flexibility.

### **What made you apply for the EcoFest Coordinator role?**

I love working with the Green Spaces team. I think EcoFest is a wonderful event for the community and it has such an important and strong message. I previously organised the Big Victorian Picnic for the team, so I was happy to work with them again.

### **What advice would you give to someone interested in your career?**

Volunteer and get involved in events in your community. There is no better experience than hands on experience at an event. It is the best way to see behind the scenes.

### **What do you do with your free time?**

I love attending live music, going out with friends, visiting art exhibitions, and travelling.

### **What is the first thing you do when you get to work in the morning?**

Make tea and stretch.

### **When you were younger, what did you want to be when you grew up?**

A marine Biologist

### **Which is your favourite green space in the district?**

Mill Gardens for hosting events, Newbold Comyn for nice long walks.

### **What are you working on at the moment?**

EcoFest at the Pump Room Gardens on September 4 and Moonlit outdoor cinema at Mill Gardens on September 9 & 10.

### **Terrific Trees Quiz Answers**

- |                     |                  |
|---------------------|------------------|
| C. Juniper          | D. Monkey Puzzle |
| C. Place with trees | A. Cherry        |
| B. England          |                  |

**To sign up to this e-newsletter, please visit:**

[www.warwickdc.gov.uk/gsnews](http://www.warwickdc.gov.uk/gsnews)

**For more information about green spaces in Warwick District please visit:**

 [greenspaces@warwickdc.gov.uk](mailto:greenspaces@warwickdc.gov.uk)

 [www.warwickdc.gov.uk/parks](http://www.warwickdc.gov.uk/parks)

 [WarwickDCNews](https://www.facebook.com/WarwickDCNews)

 [@Warwick\\_DC](https://twitter.com/Warwick_DC)



[www.warwickdc.gov.uk](http://www.warwickdc.gov.uk)

