



Heritage Open Days

10 - 19 SEPTEMBER 2021



heritage open days

FREE TO
EXPLORE

Welcome

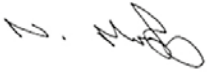
Heritage
Open Days

A warm welcome to Warwick district's annual Heritage Open Days. We are proud to be part of England's biggest and best heritage festival.

Following the restrictions of the pandemic last year when many venues were unable to open, it's great to see so many local buildings, gardens and places of historic interest once again opening their doors for free.

I would like to give my thanks to the many volunteers, who have given up their time to organise the fantastic range of activities taking place this year in challenging circumstances.

We hope you have a wonderful time exploring!



Councillor Neale Murphy, Chairman Warwick District Council



ROYAL LEAMINGTON SPA



ALL SAINTS PARISH CHURCH

Victoria Terrace, CV31 1AA

Visit website for opening times

Large beautifully decorated Victorian Parish Church, with stunning stained glass. To really appreciate the building and its traditions, come to a sung Communion service at 10.30am on either Sunday.

www.allsaintschurchleamington.org.uk



FOUNDRY WOOD

Princes Drive, CV32 6AF

Friday 10 to Sunday 19 | 10am-4pm

(self-guided walks)

Take a stroll around this fascinating site with links to the railways and foundries and find out more about the recent conversion into a community woodland.

www.foundrywood.co.uk



HOLY TRINITY CHURCH

Beauchamp Avenue, CV32 5RG

Friday 10 to Sunday 19 | 10am-2pm

Grade II listed building which was originally built as a proprietary chapel in 1847. It has a Daniel Cottier Arts and Crafts stained glass window, among others, and Italian mosaics on the chancel floor. Artwork by Julia Essex, Leamington artist, will be on display during the week. Refreshments available.

Friday 17 September 1.15pm Lunchtime concert with Robert Forbes Tenor.

www.holytrinityleamington.org.uk



LEAMINGTON SOCIETY Guided walk round Jephson Gardens

Thursday 16 | 2pm

Jephson Gardens are very special place in Leamington. Come and take a tour of the gardens learning about their history and identifying some of the interesting trees.

**Meet at the entrance to Jephson Gardens, opposite the Pump Rooms.
Booking required Email: sidney.syson@gmail.com
www.leamingtonsociety.org**



LEAMINGTON SOCIETY - Leamington Spa's history in buildings and characters

Monday 13 | 2pm

A guided walk round the historic centre of Leamington noting the buildings of importance, with stories of those who contributed to Leamington's growth and charm.

**Meet at the entrance to Jephson Gardens, opposite the Pump Rooms.
Booking required Email: sidney.syson@gmail.com
www.leamingtonsociety.org**



LEAMINGTON SOCIETY - A literary walk round Leamington

Tuesday 14 | 2pm

The famous writers associated with Leamington came here because of its fame as a spa, which people visited not only for their health but also for entertainment. For writers like Dickens a spa provided an opportunity to make contact with readers and to make money. Our tour will take in places where writers lived, performed or just relaxed.

**Meet by the blue Spring sculpture outside All Saints Church, at the bottom of Parade. Booking required Email: sidney.syson@gmail.com
www.leamingtonsociety.org**



LEAMINGTON STATION

Old Warwick Rd, Leamington Spa CV31 3NS

Saturday 11 | 2 - 4pm | Sunday 19 | 10.30am-12.30pm

Take a guided tour of Leamington's award winning station gardens together with the public areas of the restored Grade II listed Art Deco buildings.

Meet approximately 10 metres to the right of the station entrance as you face it.

www.leamingtonstationfriends.org



GURDWARA SAHIB LEAMINGTON & WARWICK

Tachbrook Park Drive, CV34 6RH

Friday 10 to Sunday 19 | 7am-1pm

The Gurdwara Sahib is an amalgamation of Sangat from Leamington Spa, Warwick, Kenilworth and the surrounding villages. The Gurdwara provides numerous services and facilities, including a wedding hall, modern classrooms, a comprehensive library and community centre.

Head covering must be worn and shoes must be taken off. Booking required for groups of 5 or more Email. jimmalle@msn.com Tel. 07973 254366 www.leamingtongurdwara.org



POLISH CENTRE

54 High Street, CV31 1LW

Sunday 12 | Sunday 19 | 12noon-3pm

Leamington Spa's first Town Hall and Police Station, designed by Russell and opened in 1830, has been the Polish Centre since 1968. Visitors will be able to see the original Council Chamber, Queen Victoria's balcony and the lower part of the ballroom which is now used as a ballet studio.

Unfortunately, there is no disabled access.
www.polskiosrodek.org



ST MARK'S CHURCH

Rugby Road, CV32 6DL

Saturday 11 | Sunday 12 | Sunday 19 | 2-4pm

Saturday 18 | 11am-3pm

Visit this large and beautiful only remaining parish church designed by George Gilbert -Scott Jnr. (1879) There is a wealth of stained glass including Kempe and a William Hill organ. Free refreshments, guides, children's trail, and much local history and pictures on display.

On Number 1 bus route from Warwick or Leamington.
Wheelchair access.



ST MARY'S ALLOTMENTS

Radford Road, Royal Leamington Spa CV31 1LQ

Saturday 11, 18 | Sunday 12, 19 | 10am-4pm

Established in 1894, the allotment site has a diversity of shed designs including riverside chalets on the banks of the River Leam. A haven of wildlife with Victorian water baths from the former Warneford Hospital.

A Sculpture Trail features the work of 15 artists, some collaborating with poets and photographers.

Booking required for art workshops Email.tammywoodrow@hotmail.com Tel: 07964 770596 www.stmarysallotments.org.uk



ST MARY'S CHURCH

St Mary's Road, CV31 1JN

Monday 13 | Tuesday 14 | Thursday 16 | 10am-3pm

Designed in 1838-39 by J G Jackson and constructed almost entirely in a stucco finish, including the tower. Explore the fascinating interior including a gallery and contemporary painted panels by international artist Mo Enright, either side of the altar.



SALVATION ARMY COMMUNITY CENTRE

1A Chapel Street, CV31 1EJ

Tuesday 14 | 10am-3pm

Leamington Spa Salvation Army has served in Leamington for over 140 years and we invite you to call into the hall to learn about our history and see how we support people locally and beyond. There will also be an opportunity to see where your generous donations help to support vulnerable people through the Way Ahead Project.



LEAMINGTON SPA ART GALLERY AND MUSEUM

Saturday 11, 18 | 11am & 2pm | Tours of the Art Gallery and stores

Sunday 12, 19 | 11am & 2pm | Tours of the Royal Pump Rooms

Art and building heritage tours across both weekends revealing hidden and interesting spaces across the building. You can also watch our digital tour on YouTube. <https://www.youtube.com/watch?v=hXIVtURVJCS>

To book email engagement@warwickdc.gov.uk

Walk-ins welcome on the day.

www.warwickdc.gov.uk/royalpumprooms



WARWICK



ALDERSON HOUSE

23 High Street, Warwick CV34 4AX

Saturday 18 | 10am-2.30pm

Superb, post Great Fire, Georgian building, now the home of Warwick's Freemasons with many original features including the grand staircase. See the interior of a Masonic Lodge and ask us some questions. Full facilities for the less able and baby changing facilities.

www.aldersonhouse.co.uk



THE COURT HOUSE

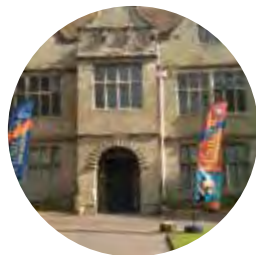
Jury Street, CV34 4EW

Sunday 19 | 11am-3pm | Tours at 11am and 2pm

Take a tour of the Court House Designed and built in 1725 by Francis Smith. The Court House replaced a medieval tavern one of the few buildings which survived the Great Fire of Warwick in 1694.

Booking required- Telephone No: 01926 492212

www.thecourthousewarwick.co.uk



FUSILIER MUSEUM

St John's House, St John's, CV34 4NF

Saturday 11 | 11am-3pm

Wednesday 15 | Zoom talk | 7pm

Four bite-size talks each 20 minutes long by Stephanie Bennett, Curator, and David Baynham, Museum Assistant.

Lieutenant Euan Lucie-Smith: Re-writing World War I History.

Sudan: the Warwicks and the Mahdi.

History and Development of the Museum.

Montgomery His Uniqueness and Significance: A Personal Take.

To book and receive link for zoom talk email:

rfwarksmuseum@btconnect.com

Activities and temporary display about the Sudan (the Warwicks and the Mahdi).

www.warwickfusiliers.co.uk/



GREAT FIRE OF WARWICK WALK

Pageant Garden, Castle Street, Warwick CV34 4BP

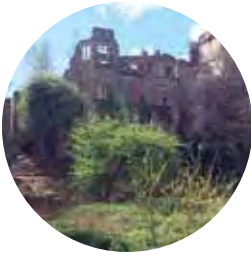
Monday 13 | 10.30am | 12.30pm

The walk, lasting approximately 90 minutes, will show the route of the 1694 Great Fire of Warwick going via key locations and will include an opportunity to view copies of original documents relating to the fire.

The walk starts from the Pageant Garden

Booking required | Tel: 01926 492212 Email lizhealey@visitwarwick.co.uk

Groups limited to 15 people.



GUY'S CLIFFE CENTRE

Coventry Road, CV34 5YD

Saturday 11 | Sunday 12 | 10am-4pm

Set in eight acres of parkland this ancient location is where the legendary Guy of Warwick lived and died as a hermit. The site was also a Saxon Hermitage dating from the mid 6th century and is of Triassic geological special scientific interest. Come and view Guy's Cliffe ruin, which is unaccessible, complete with St Mary Magdalen Chapel, which is currently used as a Masonic Temple, The whole site is owned by Masons.

www.guyscliffehouse.co.uk



GUY'S CLIFFE WALLED GARDEN

Coventry Road, CV34 5FJ. Behind Hintons Nursery

Saturday 11 | Sunday 12 | 10am-3.30pm

Come and explore the fascinating history of Guy's Cliffe walled gardens, dating from the 1770s and supplying the Guy's Cliffe estate until the 1940s. 250 years later - the garden is now supplying its fresh fruit and vegetables to the local foodbanks and night shelter; however, some of the produce will also be available to buy over the Heritage weekend.

www.guyscliffewalledgarden.org.uk



HILL CLOSE GARDENS

Bread & Meat Close, CV34 6HF

Saturday 11 | Sunday 12 | 11am-4.30pm

A unique visitor attraction with 16 restored Victorian detached gardens with summerhouses.

Visitor Centre / Plant nursery / shop

www.hillclosegardens.com



LORD LEYCESTER HOSPITAL

60 High Street, CV34 4BH

Wednesday 15 | 10am to 4.30pm

Medieval Warwick half-timbered gem with a 500 year-old garden. A fine example of English medieval courtyard architecture. Formerly the home of the Guilds of Warwick from the 1300s until the Tudor age when Lord Dudley, Earl of Leicester founded a place of refuge for wounded warriors who fought for Queen Elizabeth I. Today it is a working charity, open to the public for events, tours and visits.

www.lordleycester.com

ST NICHOLAS CHURCH

Church Street, CV34 4JD

**Friday 10 | Saturday 11 | Friday 17 | Saturday 18 | 10am-4pm |
Sunday 12 | 12noon-4pm
Sunday 19 | 12noon-5pm**

Take a guided tour of this unusually fine example of Gothic revival architecture, built by Thomas Johnson of Warwick. The church pre-dates the Victorian excesses and has a rare, delicate, simple style. There will be an art exhibition by three local artists Gill Buick, Dennis Crips and Karen French.

**There will be a free concert of classical music at 3 pm on
Sunday 19 September**

www.stnicholaschurchwarwick.org.uk



WARWICKSHIRE COUNTY RECORD OFFICE

Warwickshire County Record Office, Priory Park,
off Cape Road, CV34 4JS

Saturday 11 | 1.30pm-2.30pm and 3pm-4.30pm

A behind the scenes tour of the Warwickshire County Record Office. Visit the strongrooms and find out about the project to catalogue the Warwick Castle collection. After the tour there will be an opportunity to view some of the wonderful records found within this collection, from old favourites to freshly re-discovered material, and to hear about potential volunteer projects and social media campaigns.

**Entry via pre booked tickets only Details of how to book
are available on www.heritage.warwickshire.gov.uk**



WARWICKSHIRE MUSEUMS COLLECTION CENTRE

Online Tour

Monday 13 | 1pm-2pm.

Join the Warwickshire Museum's collections team for a live virtual tour of the new collections store at Hawks Point.

Details of how to book will be available at heritage.warwickshire.gov.uk





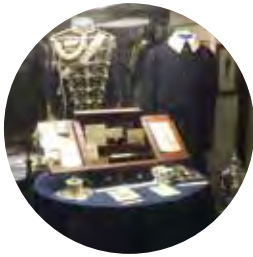
WARWICKSHIRE MUSEUM

Market Hall, Market Place, Warwick CV34 4NS

Thursday 16 | Friday 17 | Saturday 18 | Tours 11am and 2pm

Tours will last between 25-30 minutes and will take you around Market Hall Museum. You will hear about the history of the building and the highlights of its collection, from the infamous Warwickshire Bear to the amazing South Warwickshire Roman Hoards. After the tour we invite you to explore our new exhibition, Healey: Cars for Speed and Glamour. You are also welcome to browse our Museum shop and treat yourself to some refreshments in our Museum Café.

Pre booking essential. Details of how to book are available on www.heritage.warwickshire.gov.uk



WARWICKSHIRE YEOMANRY MUSEUM

Castle Street, CV34 4EW (situated in the basement of the Court House)

**Friday 10 | Sunday 12 | Monday 13 | Wednesday 15 | Friday 17 |
Sunday 19 | 10am-1pm
Saturday 11 | Saturday 18 | 10am-4pm**

This Museum is managed through a Charitable Trust which is entirely reliant on volunteers, there are no paid staff. It's aim is to safeguard the heritage and collective memory of those who served with the Warwickshire Yeomanry during the period 1794 to 1956 when the Regiment amalgamated with the Queen's Own Worcestershire Hussars.

Monday 13 | Open Discussion 'The Ten Most Interesting Objects in the Museum'

Sunday 19 | 'Selective items from Museum Archives'

www.warwickshire-yeomanry-museum.co.uk



KENILWORTH

KENILWORTH ABBEY MUSEUM & HERITAGE CENTRE
Abbey Fields, CV8 1BP

Saturday 11 | Sunday 12 | Saturday 18 | Sunday 19 | 2.30pm-4.30pm
Guided Tours | Saturday 11 | Sunday 12 | 3pm

Members of the Kenilworth History & Archaeology Society will be leading a guided walk of the Abbey ruins bringing to life the people who lived and worked there and why there is so little left of our once magnificent Augustinian Abbey.

Register at the museum from 2.30pm. Numbers will be limited.
www.khas.co.uk



KENILWORTH ALLOTMENTS

Saturday 18 | Sunday 19 | 11am-4pm

The Odibourne Allotment site, one of three allotments managed by the Kenilworth Allotment Tenants' Association, is delighted to take part in the Heritage Open Days. Feel free to drop in and enjoy these peaceful working allotments and see the huge variety of produce being grown by our plot holders.

We are an outdoor allotment site and the pathways may become muddy during wet weather making it particularly difficult for wheelchairs, mobility scooters and prams/pushchairs etc.

www.kenilworthallotments.org



THE PARISH CHURCH OF ST NICHOLAS

28 High Street, CV8 1BP

Saturday 11 | Tuesday 14 | Thursday 16 | Friday 17 | Saturday 18 | from 9am
Sunday 12, 19 | Wednesday 15 | from 12 noon

Located close to the remains of Kenilworth Abbey, this lovely church features a 14th century west tower and spire, decorated arches and perpendicular clerestory restored in 1864.

www.stnicholaskenilworth.org.uk





EXPLORE THE
DISTRICT'S
VILLAGES



ALL SAINTS CHURCH, LADBROKE

Church Road, CV47 2DF

Saturday 11 | Friday 17 | 10am-4pm | Sunday 12 | Thursday 16 | 2pm-4pm

All Saints' Church with its unusual striped tower, Gilbert Scott interior and fine stained glass stands in a picture postcard setting.

Discover more about this recently repaired 700 year old church and historic village. Special displays inside church and friendly guides for pre-booked tours of the CHURCH or VILLAGE.

Tour Guides must be booked | Tel 07308 078204

Email ladbrokechurch89@btinternet.com | www.ladbrokechurch.org.uk



BADDESLEY CLINTON

Rising Lane, Baddesley Clinton, B93 0DQ

Saturday 11 | 9am-5pm

The magic of Baddesley Clinton comes from its secluded, timeless setting deep within its own parkland. From refuge to haven, this atmospheric moated manor house has been a sanctuary since the 15th century. Discover Baddesley's late medieval, Tudor and 20th-century histories and uncover its stories, from hiding persecuted Catholics in its priest's holes, to the history of the Ferrers family who lived at Baddesley for more than 500 years. The peaceful gardens include fish pools, walled garden and a lakeside walk, perfect for a tranquil stroll.

www.nationaltrust.org.uk/baddesley-clinton



PACKWOOD HOUSE

Packwood Lane, Lapworth, B94 6AT

Saturday 11 | 9am-5pm

Surrounded by beautiful gardens and countryside, Packwood was described by a guest in the 1930s as 'a house to dream of, a garden to dream in'. Lovingly restored at the beginning of the 20th century by Graham Baron Ash, you can discover the detail behind the man, his passion for collecting and his collection. The gardens include brightly coloured, 'mingled style' herbaceous borders, famous sculpted yews and an 18th-century gentleman's kitchen garden.

www.nationaltrust.org.uk/packwood-house

BAGOT'S CASTLE

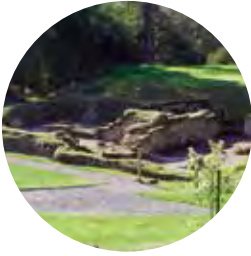
Church Road, Baginton, CV8 3AR

Friday 10 | Saturday 11 | Sunday 12 | Friday 17 | Saturday 18 | Sunday 19
10.30am-4pm

Built in 1380's by Sir William Bagot. Restoration works completed to consolidate the remains of the ruin in 2012. Set in 19 acres of pastureland. Picnic benches, children's trails/activities, children's teddy bear picnic area, wood carver on-site one day over the two weekends.

Bagot's Castle is located at the end of Church Road, Baginton, CV8 3AR just past the church which is on the right as you go down Church Road. Parking is in our car park at the end of Church Road - overflow car parking at the Blacksmith Shop just as you enter Church Road/Signs will be in place.

www.bagotscastle.org.uk



CHURCH OF ST MARY, HASELEY

Firs Lane, Haseley, CV35 7LS

Saturday 11, 18 | Sunday 12, 19 | 10am-4pm

This stunning Grade I listed medieval church with box pews is located in an idyllic setting close to Warwick.



ST ANNE'S CATHOLIC CHURCH, WAPPENBURY

CV33 9DW

Saturday 11 | Sunday 12 | Saturday 18 | Sunday 19 | 11am-5pm

St Anne's Catholic church sits on an old Roman encampment with a rich history going back to the 18th century. The church was completely restored in 2014 using archive records and specialist craftsmen. It is a beautiful country parish church. A booklet of the history will be available for visitors.

stanneswappenbury.wordpress.com



ST JOHN THE BAPTIST CHURCH, WASPERTON

Wasperton, CV35 8EB

Saturday 11 | Sunday 12 | 11am-4pm

Small church remodelled 1847 by GG Scott includes a 16th Century pulpit an 18th Century wrought iron communion rail, a timber porch, bellcote with spirelet and two Pugin designed windows.

www.barfordchurches.org.uk



ST MARGARET'S CHURCH, HUNNINGHAM

School Lane, CV33 9DS



Friday 10 to Sunday 19

The church is open during daylight hours

Built in 1216 so that residents could attend church when the river crossing to Wappenbury was flooded.

The church was constructed with Ashlar sandstone with Victorian additions and a wooden bell tower. The West wall consists of a huge exterior buttress and a long pointed light containing the Millennium window. The font is white sandstone from the 14th century.

The church is rural in delightful countryside.

ST PETER'S CHURCH, BARFORD

Church Street, Barford, CV35 8BS



Sunday 12, 19 | Wednesday 15 | 9am-6pm

There has been a church on the site since Saxon times. The present church was re-built in the 1840s save for the Tower which is 14th century .It houses a ring of 6 bells and careful examination of its exterior shows bullet holes left during the Civil War. In the churchyard lies buried Joseph Arch (1826-1919) who was born in a nearby cottage. He founded the National Union of Agricultural Labourers. His tomb is marked with an obelisk.

www.barfordchurches.org.uk

ST CHAD'S CHURCH, BISHOP'S TACHBROOK

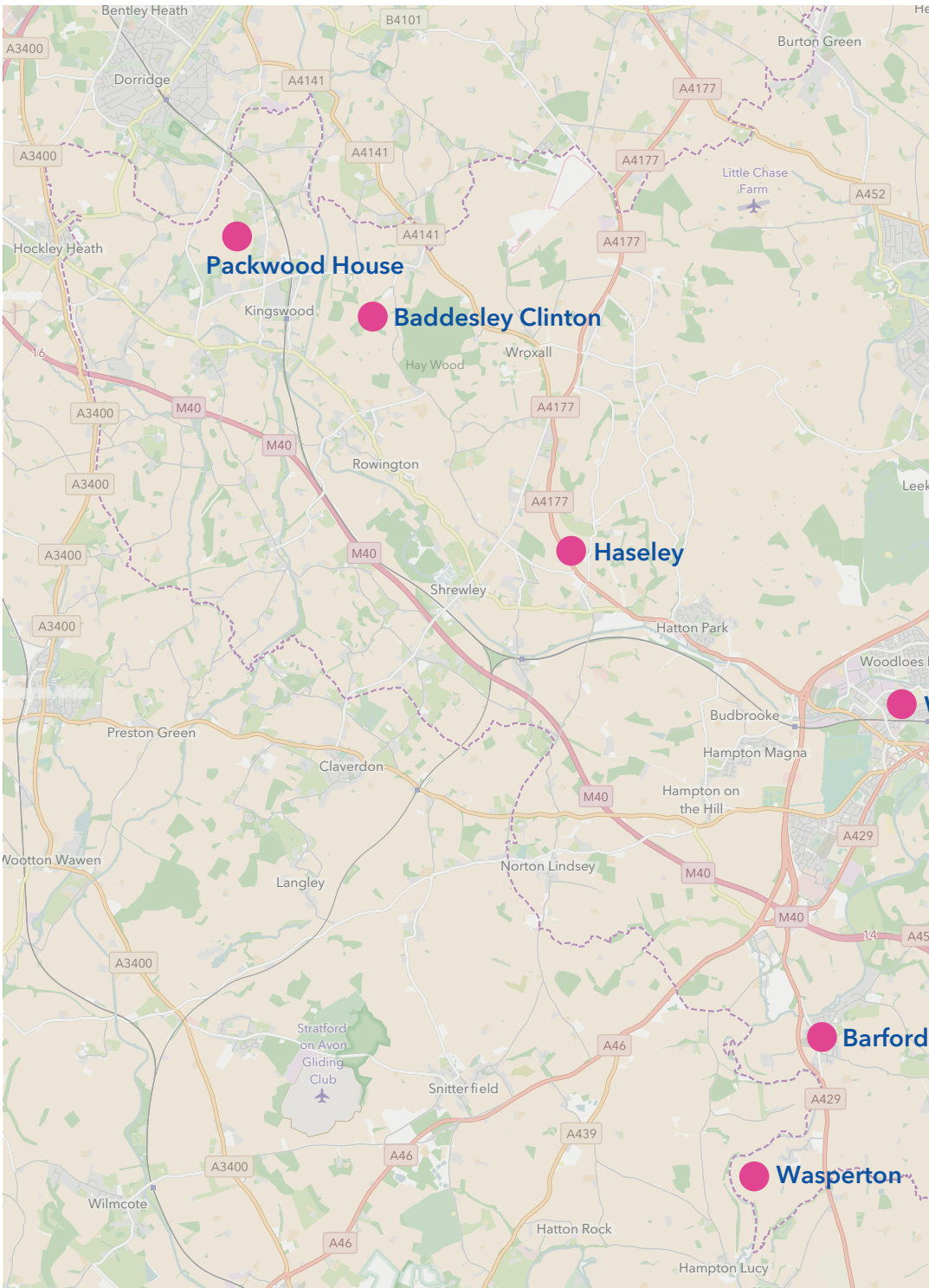
Bishop's Tachbrook CV33 9RJ

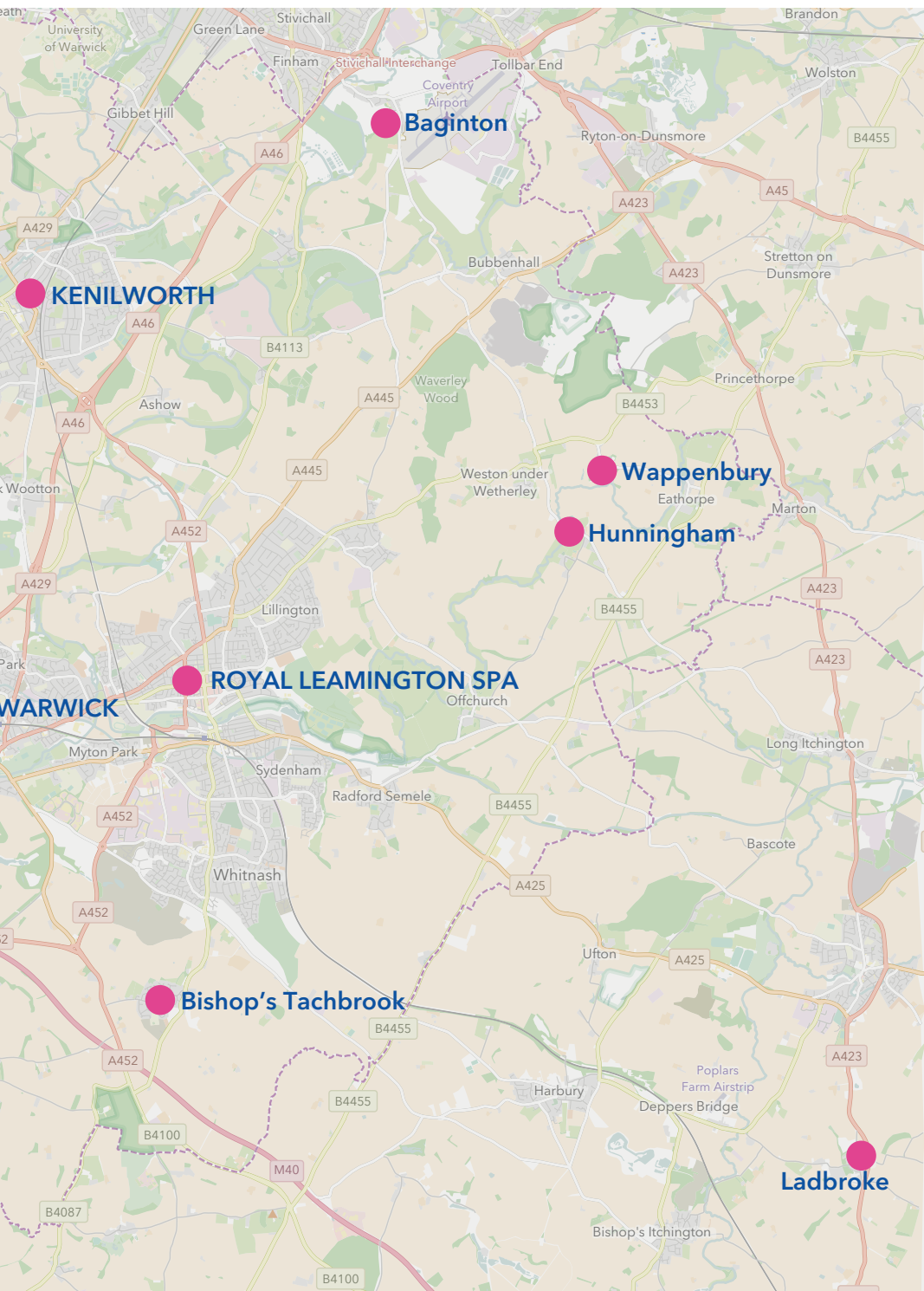


Saturday 11 | 10am-4pm

The building has its roots deep in history, parts of which go back to the 12th century. The aisle and tower were added in the late 14th and early 15th century. Two of the beautiful stained glass windows are of special interest. The first is in memory of Charles Kingsley the other is an early work of William Morris.

www.bishopstachbrook.com





For More Information

www.heritageopendays.org.uk

 Warwick DC News

 Warwick_DC #DiscoverHODWarwick

Warwick District Council extends its thanks to all the venues that have joined the scheme this year and to all the volunteers who give up their time to make this event possible.

COVID-19 Disclaimer

The information in this guide was correct at the time of going to print, but may be subject to change or cancellation at short notice.

When visiting venues please abide by the latest government guidance (<https://www.gov.uk/coronavirus>) and follow all directions provided by staff members and the signage within the venue. You must not visit any site if you believe that you may have been infected with Covid-19.

