

Warwick District GREEN SPACES

MARCH 2021



Green Space of the Month Myton Green

Myton Green Park is a newly created 25-acre public space which was officially handed over to Warwick District Council and the people of Warwick in December 2020.

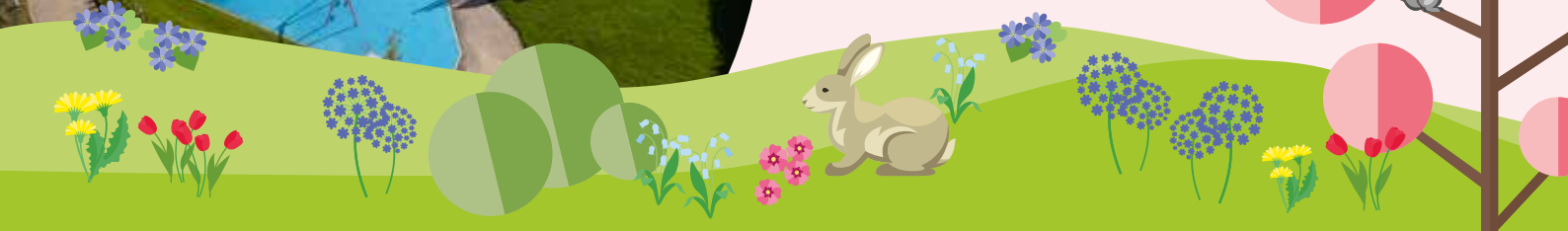
The site had previously been in the ownership of The Europa Way Consortium comprising The King Henry VIII Endowed Trust, Warwick; the Charity of Thomas Oken and the Nicholas Eyffler and Gardner Trust. The Charities and Trust have been working together since 1992 to bring forward the high quality landscaped corridor and park as part of the residential development of their land off Europa Way.

The new public space has six equipped play areas including a multi-use games pitch with five-a-side football and basketball court, wildlife areas, allotments and a community orchard.

Being adjacent to the National Cycle Route 41 and with almost 5 kilometres of new footpaths and cycle-ways the site is easy to access by bike or on foot.

In this edition

- What to look out for in March
- St Mary's Lands bird crop
- The BandStand Together
- Broadleaf Tree Planting at Oakley Wood
- New entrance signage to parks
- Nature photo of the month
- Fun facts about daffodils!
- A day in the life of Becky Danker



What to look out for in March



Spring has sprung, and how welcome it is! As we wave goodbye to winter we will start to see animals that had previously been forced into hibernation and who are now on the hunt for food, such as hedgehogs, dormice and bats. Many species of birds, including great tits and blue tits, will be on the lookout for a mate to nest with. Flowers such as grape hyacinth, iris and daffodils are starting to show their true colours.

As lighter evenings and warmer weather start to appear, butterflies and bees in search of pollen are more likely to be seen in our surroundings. Look out for the eye-catching peacock butterfly!

If you are unable to go out at the moment, you can still connect with nature from home. Warwickshire Wildlife Trust have put together this wonderful tour of Leam Valley Nature Reserve, which you can watch here:

www.youtube.com/watch?v=uZP9b7rQalo



St Mary's Lands Bird Crop

New measures are being put in place at St Mary's Lands in Warwick, to ensure the area's biodiversity is protected and to create a refuge for local wildlife.

In May 2020, a mix of wildflowers were sown to create a new crop for birds to feed from. A commercially produced seed mix, suitable for wild birds and insects, has already resulted in a steady but noticeable increase in bird numbers over the winter. Up to three stonechats have been recorded and linnet numbers have increased on site from around 30 to a regular count of over 150 over the winter period. The flowers have established well, producing lots of colour and attracting a lot of interest over the summer. The sunflowers were a particular success with the public, as well as the bees and birds, who happily feasted on the seeds.

The crop will need reseeded in two to three years, but is now a refuge for wildlife and a lifesaving source of food and hibernation. It will also provide endangered, red-listed birds with an ideal roosting site. Due to the popularity of the site, new fencing and signage will soon be put in place, without sacrificing footpaths, to ensure birds are protected throughout the nesting period.



The 'BandStand Together'

The deadline for song dedications for our upcoming online gig, **The BandStand Together**, has now passed and we have had some very moving dedications. We will be selecting songs over the next couple of weeks and will notify those whose songs have been chosen. We have also had a lot of interest from local musicians who are delighted to have the opportunity to perform after many months.

The date for the online event will be announced on WDC's website and on our social media channels.

Nicky's interview with Brody Swain on BBC CWR is still available to listen to online, 3hr 22min in: <https://www.bbc.co.uk/sounds/play/p093p2k9>

Our wonderful Community Engagement Volunteers have now taken over our social media channels, so give them a follow for more updates on this and other upcoming projects: @PumpRoomGardens



Broadleaf Tree Planting at Oakley Wood

A winter restoration programme at Oakley Wood to promote the establishment of native broadleaved trees is now nearing completion with the planting of hundreds of saplings.

The work which is being undertaken by the Warwickshire Wildlife Trust in partnership with Warwick District Council, has seen the removal of conifer trees planted after the Second World War. This is to provide more light and space for the native species to grow, helping to return the ancient woodland to its historical form.

By early March around 600 broadleaved trees will have been planted. The future canopy trees are mostly oak, but will be supplemented with cherry, hornbeam, wild service and small-leaved lime. There will also be understorey trees added and some faster growing species including field maple, blackthorn, alder, birch and hazel. Planting is at low density to allow natural seed dispersal to fill any gaps.

With good management, this will not only improve the biodiversity and sustainability of the woodland, but also produce high quality timber, for which forest managers in 100 years' time will thank us for.



Nature photo of the month

This month's photo is from Julie, who says:

'This beautiful twilight scene on a winter's eve invited me in...'

If you would like your photo to feature in May's newsletter, please email it to greenspaces@warwickdc.gov.uk, with the subject 'Newsletter Photo'.

- Please only send one photo at a time, but feel free to share a new one each month!
- Your photo must be of something in nature and/or one of our green spaces.
- Please include your name and 1-2 sentences explaining where you took your photo, which will be included in the newsletter if your photo is selected.



New entrance signage to parks – Stay safe covid signs

The essential lockdown measures to slow the spread of COVID-19 have had a huge impact on everyone in our District. With limited trips outside home for exercise, the destination of choice for most people has been to their local park. There is therefore no better location for us to reinforce our messaging about the importance of following government guidance.

We hope that our colourful new signage at the park entrances, will encourage our many visitors to stick to the rules so that they can look forward to better times ahead.



Fun facts about daffodils!

A daffodil field can bloom for up to 50 years in the right conditions.

In China the daffodil symbolises good fortune, in Japan they symbolise joy and in France they are a sign of hope.

There are over 13,000 different types of daffodil!



A day **in the life** of

Becky Danker, Community Engagement Volunteer

Why did you become a Green Spaces Volunteer?

I was looking for a volunteering role to meet new people and learn new skills. I wanted to do something to support our local parks as I have always enjoyed spending time in places like Newbold Comyn and Jephson Gardens. They are so important for our mental and physical wellbeing – especially in our current circumstances. I also wanted a role that would enable me to do lots of different activities, and allow me to apply my skills from my day job working in marketing.

How has the pandemic affected your volunteering?

Given all of the constraints around large gatherings, we are having to think differently about how we encourage the local community to use our Green Spaces! I have been a volunteer for just over a year now, and because of the current government restrictions, I haven't been able to help run an Event just yet. However, I'm keeping busy posting content on Social Media, hopefully reaching our audience online rather than in person. (See Becky's posts @PumpRoomGardens)

What are you working on at the moment?

We are running a Covid-safe, online bandstand gig called BandStand Together this month. We asked members of the public to dedicate a song to someone, and these will be performed by local musicians and streamed online. The perfect way for us to make use of our wonderful bandstand whilst making sure we keep everyone safe and well.

Which is your favourite green space in the area?

It's a tough one! I love spending time in Newbold Comyn – I started my fitness journey by walking/jogging around the park and it's great for runners. I also love the views from the top, it's a great place to take in your surroundings and relax. I also enjoy spending time in Jephson Gardens and of course the Pump Room Gardens! We are spoilt for choice in Leamington Spa!



If you were a tree, insect or animal, what would you be?

I would go with a Humming Bird – I am constantly on the move, I never sit still, and I talk quite a lot!

Where would you most like to go on holiday?

I'm planning a holiday close to home later this year, to South Wales, but I love travelling to new places, and am looking forward to this more than anything when the current restrictions are lifted! I've been lucky enough to spend time in some amazing National Parks in the US, including Yosemite and Red Rock Canyon. I would love to see more – Yellow Stone, the Canadian Rockies, and Niagra Falls are all on my wishlist!

To sign up to this e-newsletter, please visit:
www.warwickdc.gov.uk/gsnews

For more information about green spaces in Warwick District please visit:

 greenspaces@warwickdc.gov.uk

 www.warwickdc.gov.uk/parks

 [WarwickDCNews](https://www.facebook.com/WarwickDCNews)

 [@Warwick_DC](https://twitter.com/Warwick_DC)



www.warwickdc.gov.uk