

KENILWORTH

Sports and Leisure plans

STEP INTO THE FUTURE





Work is progressing to expand and improve the sports and leisure facilities at Castle Farm Recreation Centre and Abbey Fields Swimming Pool.

Both buildings are more than 30 years old and their capacity to meet the needs of the growing population of the District and Kenilworth is limited.

In August the Council agreed to progress with sustainable plans for the future, with the aim of bringing both centres in line with the newly refurbished St Nicholas Park and Newbold Comyn Leisure Centres. Both of these facilities have been hugely successful in offering a wide range of new activities and facilities for the local community to enjoy.





Abbey Fields Swimming Pool

- Additional family indoor pool, which opens up to sun terrace. The plans include scope for a moveable floor to alter the water depth and direct access via a hoist from a fully accessible changing room
- Attractive conservatory style café for park and pool visitors
- New, larger changing rooms with family friendly facilities and specialised accessible changing provision
- New, bright and fresh entrance area and reception with views over the park
- Multi-purpose studio room for parties, meetings and other community uses

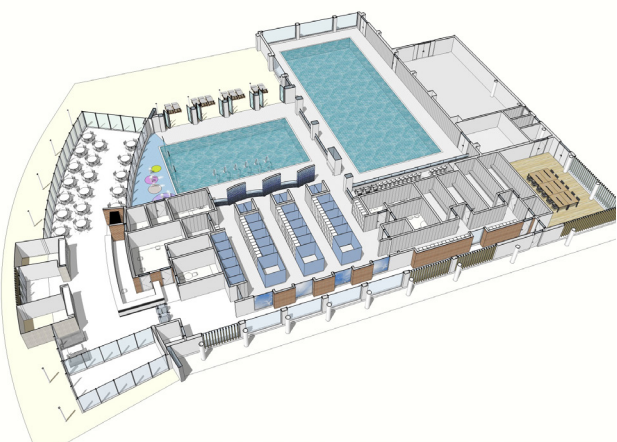
The park pavilion is also included in this scheme and the project team are looking at ideas to refurbish this building to be used as a flexible space.



Castle Farm Recreation Centre

- We will be replacing the existing building with a brand new leisure centre offering the latest fitness facilities and equipment
- 80 station gym
- Two exercise studios for an exciting new range of group fitness classes, including spin bikes
- Six court sports hall
- Stylish changing facilities and lockers
- Light and bright reception area and foyer making the most of the parkland setting
- New outdoor changing rooms for customers using football pitches
- A new petanque terrain for our local enthusiasts
- Exciting 'interactive' room... we are looking at options to make use of virtual reality technology





Working with our partners and the community

These plans are being shaped in consultation with local residents, schools, sports and community groups, national sports bodies and Sport England with a focus on providing high quality, accessible and environmentally sustainable facilities for the local community for the next thirty years.

Emily Naismith, local parent and Changing Places Campaigner



"I am delighted with the new designs for Abbey Fields. I am especially pleased that you are not only planning a Changing Place facility, but that it will include a hoist which can take a disabled person directly into the pool without the need for unnecessary transfers. Many people take going swimming with their families for granted, at the moment families like mine simply don't have access, this will be life-changing for so many people across the district."

Hayden Abbott, Head Teacher Kenilworth School and Sixth Form



"Kenilworth is a growing town and it is essential in the coming years, that local sports facilities expand to accommodate the growing number of children who will need to learn to swim, participate in a range of sports, and join local sports clubs."

Next Steps

The Council's project team is currently working on the next stage of the plans in preparation for a public consultation which will take place later this year.

This will allow the public to give feedback on the detail of the designs, access and other issues which will be taken into consideration before finalising the plans. Details of this consultation process will follow.

A further report will be made to the Executive and Full Council in Summer 2020 at which time the final designs and potential cost of the buildings will be presented in order to seek permission to proceed with the construction phase of the project.

We are hoping that the new facilities will be open in late 2021.

To see more visit

www.warwickdc.gov.uk/kenilworthleisure