

Warwick District **GREEN SPACES**

October 2019



In this edition

- Pump Room Gardens update
- Leamington in Bloom results
- Fence painting in The Marish
- Fungi in Warwick District
- Meet Jo Dagg, Community Development Worker



Green Space of the Month

Eboune Close Recreation Ground

Located in the heart of Kenilworth, behind Farmer Ward Road, Eboune Close Recreation Ground is also known as Farmer Ward Open Space and is one of the smaller parks in the district. Despite this, this 'secret park' tucked away behind mature trees, has a bit of everything: shaded paths through woodland, wildflower meadow areas, a recently renovated play area and wide, flat open space, ideal for playing sport and hosting community events.

Popular in Kenilworth, it is also known locally as 'The Black Pad'. More than 25 years ago the space had a very different use – you might be surprised to learn that the beautiful community park you see today was previously used as a landfill site. Before the area was developed as a public space the Council carried out various soil investigations and monitoring works. Going even further back, the site was originally a quarry and following its closure was filled with water, which may be why it was called the Black Pad?

Last year the Green Spaces team carried out a range of improvements to the park including installing new playground equipment, the creation of new footpaths, wildflower planting and woodland management to encourage wildlife such as bees, butterflies and bird species.

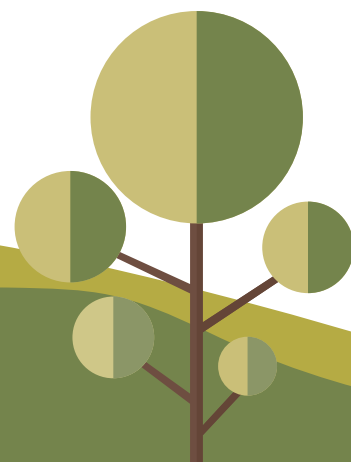
Visiting in Springtime is a treat, with a plentiful display of buttercups and daisies which enjoy the damp soil at the park at this time of year.

Postcode: CV8 2QG

Accessible from: Eboune Close, Ashdene Gardens and Brooke Road

Parking: on street

Public Transport: Train, Kenilworth Station (5 minute walk), Buses 11, X17, X77 from Leamington



Green Spaces Newsletter – what do you think?

Whether you have been an avid reader since our first edition in October 2018, or if this is the first of our newsletters you have read, we would love to hear from you! We would like to know what you think of this newsletter to help us make it even better during its second year! Please spare a couple of minutes and visit www.smartsurvey.co.uk/s/gsnfeedback/ to let us know your views.

Many thanks, Green Spaces Team

Events and Activities

25 September - 20 October &

23 October to 17 November

Leamington Studio Artists

Free Exhibitions, East Lodge,

Jephson Gardens. www.lsa-artists.org

Sunday 13 October, 10am start

Green Leek Run, Kenilworth

A 10K run raising funds for local primary schools, encompassing Abbey Fields and Castle Farm Recreation Ground.

sites.google.com/view/greenleekrun/home

Friday 25 October, 12noon-3.30pm

Wild Food Identification Walk,

Oakley Wood

A guided walk identifying edible and poisonous plants and mushrooms. Find out how to spot wild edibles, experience new flavours and enjoy tasty samples.

kerry@foragingcoursecompany.co.uk

07915427873

www.foragingcoursecompany.co.uk



Pump Room Gardens Programme Update – Summer events on the Pump Room Gardens

Pump Room Gardens
RESTORING THEIR HERITAGE TO HEALTH



The last week of the summer holidays saw the bandstand used for a new purpose entirely – storytelling! Families with primary school aged children joined the Green Spaces team for ‘trial’ storytelling sessions over four sunny days. Stories included fairy tales, classics and new literature, with books borrowed from Leamington Library next door. The Very Hungry Caterpillar, Aliens Love Underpants, The Highway Rat and even a rendition of Goldilocks with glove puppets all featured. Making the most of the newly restored and landscaped site, each session involved a journey around the Gardens, using the bandstand as well as the new wooden seating area in the Rain Garden – the perfect setting for woodland stories!



We hope to follow this trial with more storytelling sessions in spring and summer 2020 – watch this space for details.



Bandstand

We are seeking the final agreement of the details to allow us to finish off the bandstand and revised plans have been submitted to Planning for Listed Building Consent. The final pieces are the re-opening of the entrance to the undercroft, which will include a new door with a decorative grille cover to protect the steps. Additional stonework will be added to the edge of the plinth to pave the way for the final coat of render. Some adjustments are also required to the main steps as they are too high at present. This will allow the surrounding planting to be put in to set off the bandstand. Once we have a date, we'll let you know.



What to look out for in October

Following a lovely 'Indian summer', Autumn is now in full swing – look out for conkers falling out of our Horse Chestnut trees! Leaves are starting to show their stunning autumn colours in October as well – the display each year is determined by the weather over the summer.

Birds such as swallows and house martins will have set off for warmer climes, heading to countries in Africa. Ivy and many bushes will be in berry, which provides food sources and hibernating space for winter migrating birds. Apples are falling, providing great food for blackbirds

in particular, and the last of the blackberries will be providing a food source for mice.

Things to do with conkers:

1. Thread them onto string and make a necklace
2. Use them to keep spiders away – they release a chemical that deters spiders
3. Tie them to a piece of string and play a game of conkers!
4. Wash your clothes! Crush and soak in water overnight and use instead of detergent



Leamington in Bloom - Results!

Leamington has again received a gold award in the regional Heart of England in Bloom awards. This is the fourth time in as many years that Leamington in Bloom has been awarded gold by judges in the contest which is part of the nationwide Britain in Bloom competition. Jephson Gardens received a special award, and the Pump Room Gardens' new planting displays also got a mention. Britain in Bloom is the UK's longest running gardening competition, providing an opportunity for community groups to brighten up their town or city, bringing wide-ranging social and environmental benefits.



Fungi in Warwick District

We have many different species of fungi in our green spaces – these typically grow in woodlands, on bark and at the base of trees. If you see a fungus, you are in fact only seeing its flower – depending on the species, it has miles and miles of 'mycelium' that grow like roots under the ground.

There are many good places to spot fungi in the district, including all of our woodlands – Oakley Wood, Crackley Wood, Kenilworth Common, and our cemeteries. We

even have some in the Glasshouse in Jephson Gardens – shaggy parasols! Enjoy spotting them if you are out and about this October – some of them are quite rare, including giant puffball, chicken of the woods, fly agaric and sulphur deceiver, but remember to look and photograph only, **do not eat any as many species of fungi are poisonous.**



Fence Painting at The Marish

A very colourful project took place in Chase Meadow in Warwick over the summer holidays, fence painting!

The innovative scheme was the brainchild of a group of parents from the community centre, who identified a perfect place, a local play area surrounded by a wooden picket fence.

Once go ahead was given from the Council, a plan was put in place to paint the fence using standard household emulsion, which can easily wash off skin, hair and clothes. Despite a much later start than planned due to wet weather on the first day, around 20 children and parents started work. By lunchtime every one of the 124 fence pickets had some paint on it, and most had a pattern, a picture, a name or a design.



In all there were six sessions and each of the 500+ fence pickets have been painted with a base coat and most have been decorated by the children and their parents.

The project has achieved the organisers' aim of getting children and their parents out in nature and doing something fun, but also unique and memorable. It has also brightened the play area and made it a friendlier space, creating a good topic of conversation and a great feeling of community spirit.

Karen Mitchell,
Chase Meadow Resident

A day in the life of

Jo Dagg, Community Development Worker



What does being a Community Development Worker involve?

We work as a team and I am usually out and about in my designated area, which for me includes Sydenham and Warwick West. I support the community hubs in these areas (Chase Meadow, Packmores and the Sydni Centre), helping them to secure funding and encouraging them to work together. I also support community fun days in the local parks and I am the Council's coordinator for 'Walking for Health'.

Do you enjoy the work?

I love my job just because every day is different – I like meeting new people and trying to help them and enjoy seeing them grow and change. It is very rewarding when someone you have helped is able to get a new job or achieve a goal to make their life better.

How did you get into the industry?

It's all I've ever known really! When I left university I joined Coventry City Council as a Community Warden and got into the role through the community projects I was involved with, I've been working with communities for around 15 years now.

What are you currently working on?

I'm working with Lovells, the house builder, looking at potential community projects they can support in our areas. I'm also involved with the Sydni Centre's Festival of Lights, in Sydenham, South Leamington, and supporting our new campaign 'Act on Energy', which gives people advice about reducing energy bills over the winter.



What skills are key for succeeding in your role?

People skills! Being able to listen and understand people. I need to be very organised with my time, and have the ability to build trust and relationships with people in our communities and the organisations who support them, by making sure I do what I say I'm going to do.

Who do you work closely with?

The community hubs, local councillors and other stakeholders. Our team also works closely with other Council teams including the Green Spaces and Events teams. Our stakeholders include children's and youth centres, the police, doctors' surgeries and community groups – the list is endless!

If you could change one thing about your job, what would it be?

Having more time to help more people.

What do you do in your spare time?

I'm usually running around after my little boy – he's 3. That's pretty much it! We have family days out and we go away on holidays – he takes up all my time!

If you were an animal, what would you be?

Probably a gull – I'd love to be able to fly and I love the sea – I'd love that sense of freedom. I'm not sure I'd steal people's chips though!

Which is your favourite green space in the district?

I'd say St Nicks in Warwick – I go a lot with my son. We went to a Fun Day there recently. There's lots for children there with the playground and river. There are also wide open spaces and it can be really peaceful, especially first thing in the morning. We love the fun park and the café for an ice-cream!

To sign up to this e-newsletter, please visit:
www.warwickdc.gov.uk/gsnews

For more information about green spaces in Warwick District please visit:

 greenspaces@warwickdc.gov.uk

 www.warwickdc.gov.uk/parks

 WarwickDCNews

 @Warwick_DC