

Notice of BPA Burton Green Pipeline Diversion

May 2019 | www.hs2.org.uk

Notification



High Speed Two (HS2) is the new high speed railway for Britain. Initial works on Phase One of HS2, from London to the West Midlands, have now started.

We are working with over 15 utility providers, as we build the railway, to ensure that we do not impact the supply of important services to you and your community. This work is the diversion of an existing pipeline which we notified you of in May. We are doing this diversion work to prepare for the construction of the railway which will begin in 2020.

It's important to know that there are no interruptions planned to any of your utility services as part of these works.

What work will we be doing?

British Pipeline Agency have been working on diverting an existing pipeline on the land that is between Red Lane and Kenilworth Greenway in Burton Green. You can see the area of works in the map in this notification. The work is now progressing well but due to some earlier minor delays, the work is now scheduled for completion in November, a few weeks later than originally notified.

How will these works impact me?

The first phase which involved creating the site access and site mobilisation is now complete. The next stage of the works involves Pipe installation, testing and commissioning. We are now at a critical section of the pipe installation which needs to be installed in a single working shift. This activity will be carried out in a single shift during the week commencing 12th August 2019. To do this we have requested a 2-3hr extension to the working hours (i.e. 8am to 8pm or 9pm) for the particular shift. This has been granted by the local council. Noise levels will be kept to the minimum in line with council's consent.

If you have a question about HS2 or our works, please contact our helpdesk on 08081 434 434 or email HS2enquiries@hs2.org.uk

Duration of works

June to November 2019

Weekday working hours:
Monday to Friday 8am – 6 pm and Saturday 8am - 1pm (Except when specific extensions are granted by the Local council)

What to expect

Noise levels will be kept to the minimum in line with council's consent.

Usage of approved lorry routes and movements kept in line with levels agreed with HS2 and local council.

No impact on Kenilworth Greenway. Public right of way connecting Kenilworth Greenway and Red Lane will be kept open.

Notice of BPA Burton Green Pipeline Diversion

Notification



www.hs2.org.uk

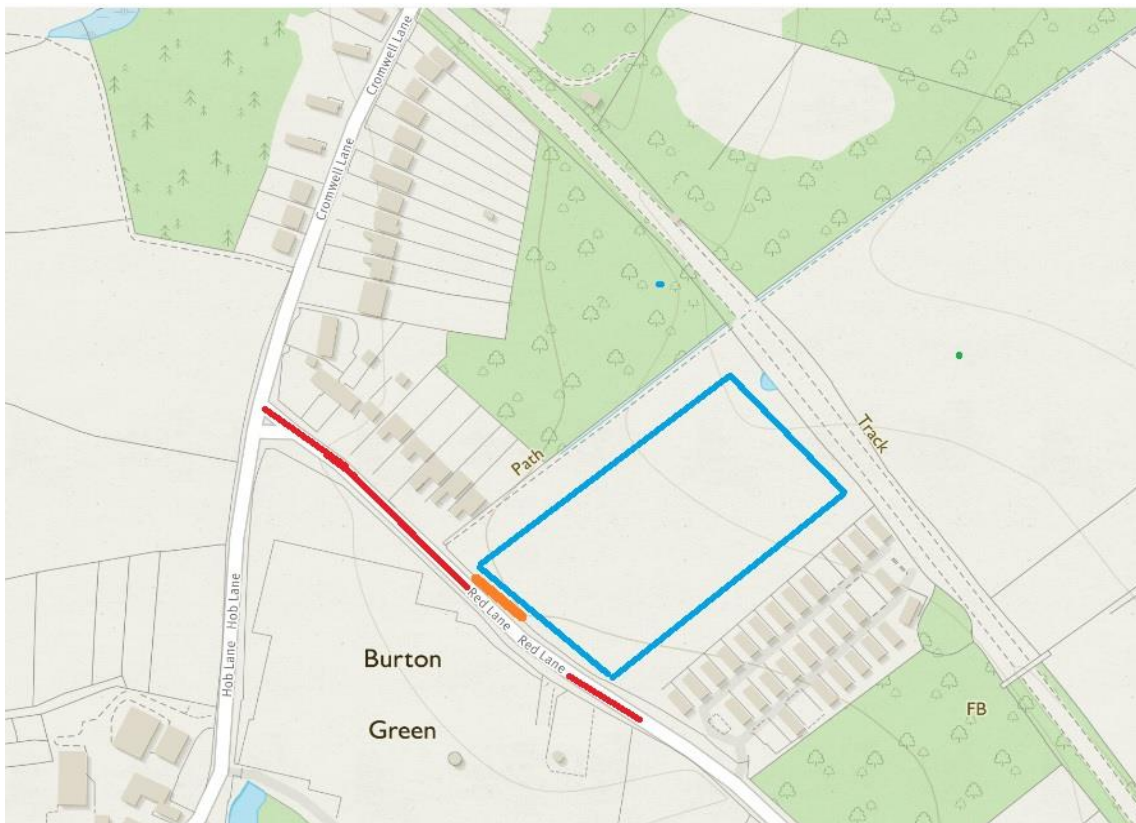
How will these works impact me?

The majority of our vehicles will be 4x4s and pick-up trucks. The only large vehicles used will be for the delivery of necessary machinery and equipment to the work site. The lorry movements will be kept in line with levels agreed with HS2 Ltd and the County Council. We aim to minimise the impact to road users as much as possible.

There will be no impact on Kenilworth Greenway. The public right of way connecting Kenilworth Green Way and Red Lane will be kept open. The noise levels will be monitored and will be kept in line with council's consent.

Map of the work site

You can see the area where the work site will be outlined in blue on the map below.



Key:

Blue line = site compound

Orange line = site access

What else is happening in your area?

www.hs2.org.uk

About our Community and Business Funds

We are offering two funds that are available to local communities and businesses between Birmingham and London, to help with the disruption caused by our construction work. These are the Community and Environment Fund (CEF) and the Business and Local Economy Fund (BLEF).

The CEF is designed to give communities the opportunity to share in the benefits of HS2. It is an allocated fund that communities are able to apply for, to help to support local projects that aim to improve their local area.

The BLEF is designed to support local economies that may be disrupted by the construction of HS2. BLEF grants are for local business support organisations and local authorities to help maintain business activity in local communities.

For more information about each of these funds, including how to apply, please visit: <https://www.groundwork.org.uk/hs2funds>



About our Commonplace websites

The planning and construction of HS2 is a huge operation – it is currently the largest infrastructure project in Europe.

It's important to us that you are kept up to date about the progress of the Project and any work that may impact you or your community. We have a series of community-focused websites where you can find out what is happening in your local area and sign up for updates about our activities.

Our Commonplace sites currently serve Birmingham, Bucks and Oxfordshire, Cheshire, Euston and Camden, Hertfordshire, Hillingdon, Northamptonshire, Old Oak, Solihull, Staffordshire and Warwickshire. More sites are being prepared to serve other areas.

To find your local Commonplace website, visit:
<https://hs2.commonplace.is/>

For further information about Phase 2a and Phase 2b, visit :
<https://www.gov.uk/government/organisations/high-speed-two-limited>



Keeping you informed

We are committed to keeping you informed about work on HS2. This includes ensuring you know what to expect and when to expect it, as well as how we can help.

Residents' Charter and Commissioner

The Residents' Charter is our promise to communicate as clearly as we possibly can with people who live along or near the HS2 route. www.gov.uk/government/publications/hs2-residents-charter

We also have an independent Residents' Commissioner whose job is to make sure we keep to the promises we make in the Charter and to keep it under constant review. Find reports at: www.gov.uk/government/collections/hs2-ltd-residents-commissioner

You can contact the Commissioner at: residentscommissioner@hs2.org.uk

Construction Commissioner

The Construction Commissioner's role is to mediate and monitor the way in which HS2 Ltd manages and responds to construction complaints. You can contact the Construction Commissioner by emailing: complaints@hs2-cc.org.uk

Property and compensation

You can find out all about HS2 and properties along the line of route by visiting: www.gov.uk/government/collections/hs2-property
Find out if you're eligible for compensation at: www.gov.uk/claim-compensation-if-affected-by-hs2

Holding us to account

If you are unhappy for any reason you can make a complaint via the helpline. For more details on our complaints process, please visit our website: www.hs2.org.uk/how-to-complain

Contact Us

If you have any questions about this notification of works, please get in touch.

 24/7 Freephone **08081 434 434**

 Minicom **08081 456 472**

 Email **HS2enquiries@hs2.org.uk**

Write to:

FREEPOST

HS2 Community Engagement

Website **www.hs2.org.uk**

To keep up to date with what is happening in your local area, visit: **www.hs2.commonplace.is**

Please contact us if you'd like a free copy of this document in large print, Braille, audio or easy read. You can also contact us for help and information in a different language.

HS2 Ltd is committed to protecting personal information. If you wish to know more about how we use your personal information please see our Privacy Notice <https://www.gov.uk/government/publications/high-speed-two-ltd-privacy-notice>