

WARWICK DISTRICT GREEN SPACES



November 2018



Welcome to our
new Green Spaces
newsletter

In this edition

- Green Space of the month - Saltisford Common
- Final preparations for the return of the Bandstand
- Otters spotted in Mill Gardens
- What to look out for in November
- Views sought on Abbey Fields Swimming Pool improvements
- Volunteers needed for our Nature Reserves
- November events and activities
- Day in the life of - Dana Hunter, Ranger

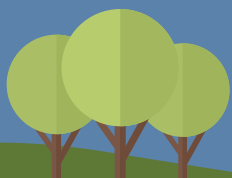
Green Space of the Month

Saltisford Common, Warwick

Located north of Warwick town centre close to the canal and Birmingham Road, this lovely open space had been rather neglected and forgotten in recent years. Over the last six months the Green Spaces Team has been busy rejuvenating and opening up the 5.5 hectare site. Saltisford Common now boasts new tarmac footpaths linking the entrances, meaning that visitors no longer have to walk over the muddy grass and making it more user-friendly for wheelchairs and pushchairs. For groups of children wanting a run-a-round the park now has 5-a-side goals and new playground equipment. If you fancy a work out, there is some great outdoor gym equipment to improve your fitness levels and it's all for free! The common is a haven for wildlife, with meadows, scrub and trees providing habitat for birds, invertebrates and fauna.

So if you want somewhere new to walk the dog, entertain your children, or simply enjoy some quiet open space do pay Saltisford Common a visit!

Location: St Michaels Road, Saltisford, Warwick CV34 5RS, bus service to and from St Michaels Road.



Final preparations for the return of the bandstand



Now that the events season is over, work is underway on getting ready to resurface all of the remaining paths (except for the main spine path which comes later). You will notice that we have moved the works compound to allow work to start on the western end of the site. This includes the new Rain Garden. Although there is a lot of fencing up at the moment, once the paths are tarmacked, the change will be dramatic, with a resin-bound finish adding a final transformation.

We are also preparing for the return of the bandstand with the base decking being replaced and the surrounding area readied for planting, including new steps. Watch this space for news of the agreed colour scheme for the bandstand which follows detailed analysis of the existing paintwork and a nod to typical Victorian-style colouring.

The bandstand itself will be back before Christmas and we are planning a special event in the New Year to mark its return.

What to find out more?

Visit Leamington Spa Art Gallery and Museum in the Royal Pump Rooms and pick up a leaflet about the Pump Room Gardens.

prgproject@warwickdc.gov.uk
www.warwickdc.gov.uk/parks
www.pumproomgardensfriends.org



Volunteers needed for our Nature Reserves

Winter works programmes on our nature reserves including Newbold Comyn, Radford Road Nature Reserve and Whitnash Brook will soon be in full swing.

Many of our sites have active work parties, either weekly or monthly, and all of our reserves have activities over the winter season that would welcome extra helping hands!

All work parties are led by experienced Warwickshire Wildlife Trust staff or volunteers. Tasks could include coppicing, scrub clearance, making habitat piles, and hedge laying and woodland management, and are open to anyone whatever your skill or ability. All tools are provided. Work parties are really good fun: and a great chance to learn new skills, meet new people, and get out and about during the winter.

For more information contact volunteer@wkwtr.org.uk



What to look out for in November

- Leaves on our trees (especially the maples) will be turning red, we are expecting a good display this year!
- Bedding plants are being planted in preparation for spring, including wallflowers, polyanthus, tulips, pansies and hyacinths.
- Winter migrating birds are arriving from the continent, including murmurations of Starlings, Redwings and Fieldfares, and maybe a Waxing or two. The tougher berries will still be on shrubs and trees – look out for birds on pyracantha, cotoneaster and malus trees.
- Peregrine falcons from the town will have dispersed to the countryside in search of food, before returning in late winter.



Abbey Fields Swimming Pool

During October and November the Council will be seeking the views of local people on a range of options to improve the leisure facilities in Kenilworth including those at Abbey Fields Swimming Pool, located in Abbey Fields.

As part of the consultation the Council has organised a number of drop-in sessions for local people to see the draft options, ask questions and give your feedback to the project team. These will take place at;

Abbey Fields Swimming Pool

Monday 22 October – 6.30am to 9am
 Wednesday 24 October – 4pm to 8pm
 Thursday 1 November – 11am to 1pm
 Saturday 10 November – 1pm to 4pm

Castle Farm Recreation Centre

Friday 26 October – 11.30am to 1.30pm
 Monday 29 October – 7.30am to 10.30am
 Wednesday 31 – October 6pm to 8pm

Meadow Community Sports Centre

Thursday 25 October – 6pm to 8pm

Jubilee House

Wednesday 7 November – 6pm to 8pm

Alternatively those who are interested can see the draft options and give their feedback online via the Warwick District Council website www.warwickdc.gov.uk/kenilworthleisureconsultation until 19 November 2018.

The Council will use the consultation feedback to inform the further development of the proposals for Abbey Fields Swimming Pool for a report that will go to their Executive early in the New Year.

November Events and Activities

Every Saturday 9am

Leamington Park Run, Newbold Comyn
www.parkrun.org.uk/leamington

Every Wednesday 11.45am

Walking for Health Walk
 98 Brunswick Street CV31 3BD
www.warwickdc.gov.uk/healthwalks

Every Monday 2.30pm

Priory Pools Park, Walking for Health
 Lyttleton Road CV34 5EP
www.warwickdc.gov.uk/healthwalks

Every Friday, 12.30pm

Abbey Fields Kenilworth, Walking for Health
 Abbey Medical Centre CV8 1JD
www.warwickdc.gov.uk/healthwalks

Saturday 3 November 5.30pm

Warwick Town Bonfire, Warwick Racecourse
www.warwicktowntonbonfire.org.uk

Saturday 10 November, 12pm to 3pm

Foraging Event at Newbold Comyn
 A guided walk to find, identify and discuss edible plants and mushrooms.

Saturday 10 November 10.30am

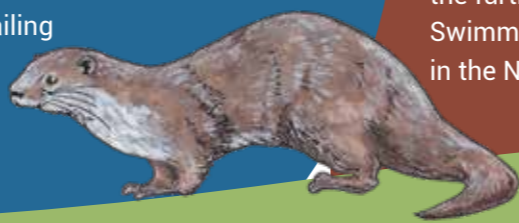
Midland Oak Park, Lillington
 Remembrance memorial service for the Warwickshire Royal Horse Artillery

Otters in Mill Garden

Over the past few years, we have been working in partnership with Warwickshire Wildlife Trust, Severn Trent and local developers to install otter passes, lay ups and holts on land owned by Warwick District Council along River Leam. Recently, staff at the Leamington Boat Centre spotted two otters frolicking in the river at Mill Gardens (clearly approving of our efforts!). This is great news for the conservation of this protected species.

You can see our Leam Otters on www.youtube.com (search for 'Otters in the River Leam').

Please let us know if you have any further otter sightings in the district by emailing greenspaces@warwickdc.gov.uk



A day in the life of Dana Hunter, Ranger



Tell me a little about your role and what you do in a normal working day?

‘My job is quite varied and involves a range of tasks, shifts and places. I keep an eye on parks and green spaces, checking whether there are any trees down, reporting broken play equipment and greeting park visitors. I also check parking meters and issue tickets if needed, take calls about issues – dogs in play areas, etc. and lock up parks in the evening. We’ve just started using social media (Twitter @WDC_Rangers) to help keep people informed about park and parking issues as well.’

What do you enjoy most about your work?

‘The amazing range of parks we have in the district. I don’t like the cold, but even if it’s snowy, when you’re wrapped up warm it’s still enjoyable. It’s an all-weather job! I couldn’t go back to having an office job now.’

What key skills do you need to succeed at your job?

‘You need to be self-motivated as there is a lot of lone working and you need to manage your own time. You also need to be polite, and know how to manage potentially difficult situations. It’s very important to be impartial and fair, and make sure you always provide a professional service. People often dislike being issued tickets, and we need to remind them that it’s our job to make it fair for the people who have paid for their parking.’

I hear you were on the radio recently?

‘Yes, I didn’t know about it until the day! I was on the JD and Roisin Show on BBC Coventry and Warwickshire. Roisin was complaining that she had just been issued her tenth parking ticket of the year, so we invited her down to see how we do things. She arrived just as we were issuing a ticket, but she was really nice and we managed to change her opinion of us. It was quite an entertaining day!’

Describe your perfect day at work

‘This would be to arrive at Abbey Fields first thing in the morning on a frosty day, and take a picture to show people how beautiful it is – a nice big punch of nature first thing! Then, if the weather warmed up taking an afternoon walk and enjoying the wonderful flowers and trees in Jephson Gardens, while greeting and assisting new visitors to the park.’

Which is your favourite green space in the district?

Abbey Fields in Kenilworth – I love the landscape of the park and also the fact that there is so much history – the barn, ruins, Abbey Gate and St Nicholas Church.

How many steps do you do in an average day at work?

It varies – some days are office based. But on average perhaps 14,000-17,000 steps – it keeps me fit!



To sign up to this e-newsletter, please visit:
www.warwickdc.gov.uk/gsnews

For more information about green spaces in Warwick District please visit:

 greenspaces@warwickdc.gov.uk

 www.warwickdc.gov.uk/parks

 WarwickDCNews

 @Warwick_DC



www.warwickdc.gov.uk

