

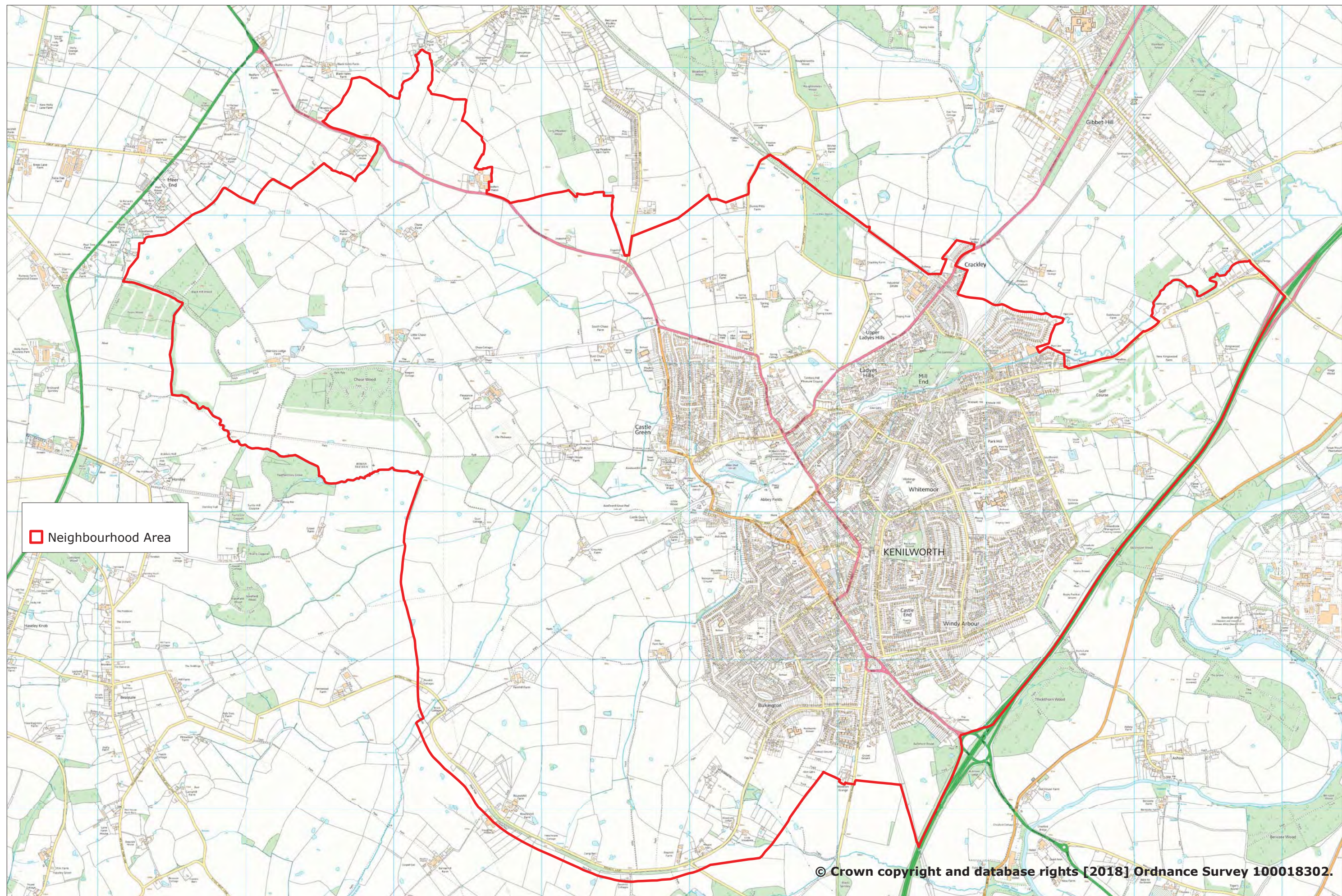
Index to Maps

Information Maps

- 1.1 Kenilworth Designated Neighbourhood Area
- 2.1 Cycle routes
- 2.2 Urban Footpaths
- 2.3 Historic Features
- 2.4 Social Infrastructure – Community
- 2.5 Social Infrastructure – Health
- 2.6 Social Infrastructure – Sports
- 2.7 Town Centre
- 2.8 Green Infrastructure

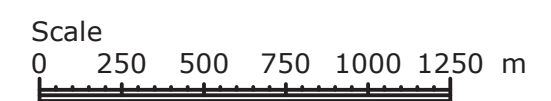
Policy Maps

- 5.1 Policies Map – Town
- 5.2 Policies Map – Urban area
- 5.3 Policies Map – Town Centre
- 5.4 Policy Maps KP13 – Character areas A - S
- 5.5 Policy Map KP14 – Non-designated Heritage Assets

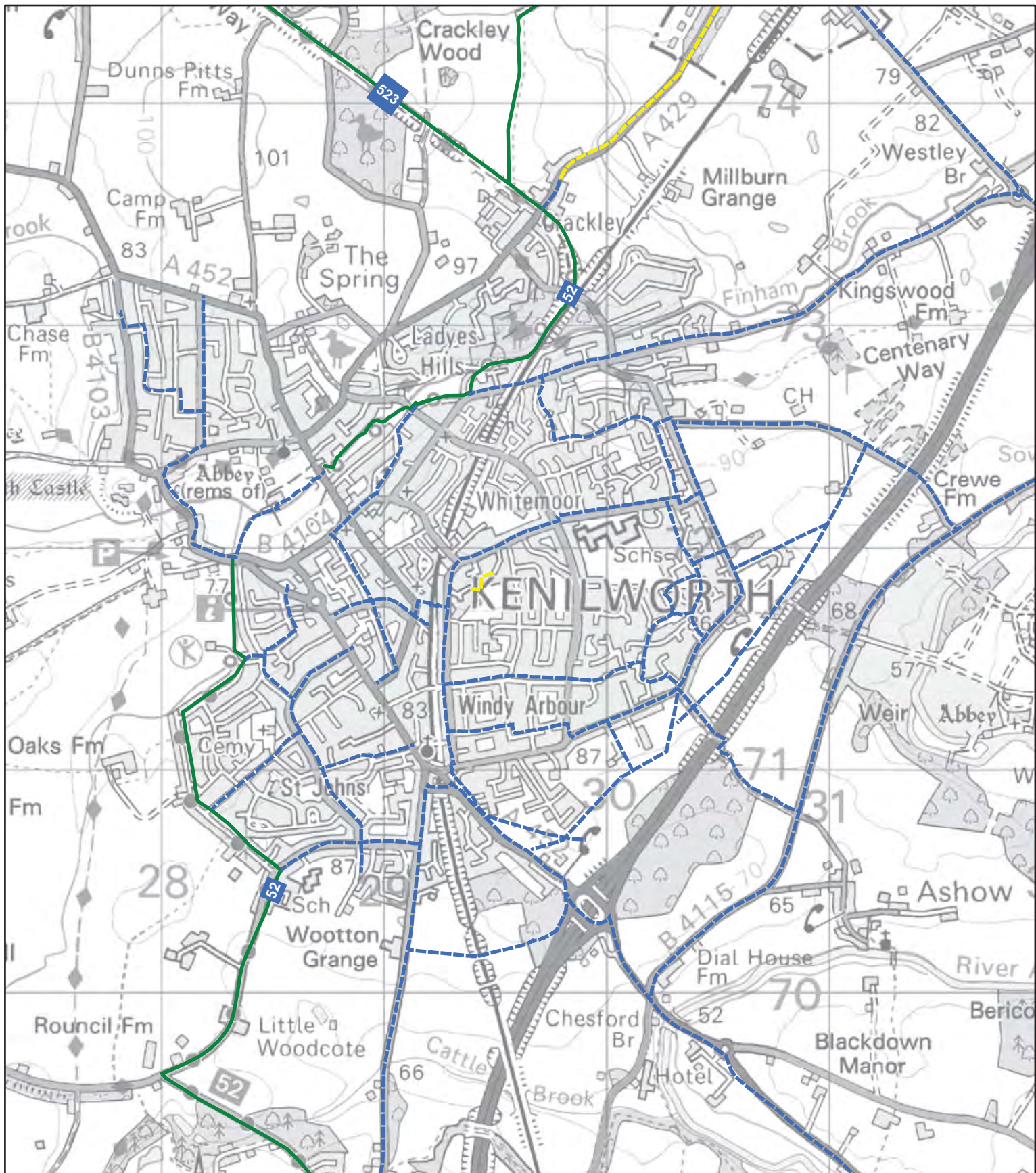


Information Map 1.1: Kenilworth Designated Neighbourhood Area

Scale: Not to Scale
Drawn By: HS
Date: 03/10/2018



Information Map 2.1- Current WCC ideas for the cycle network

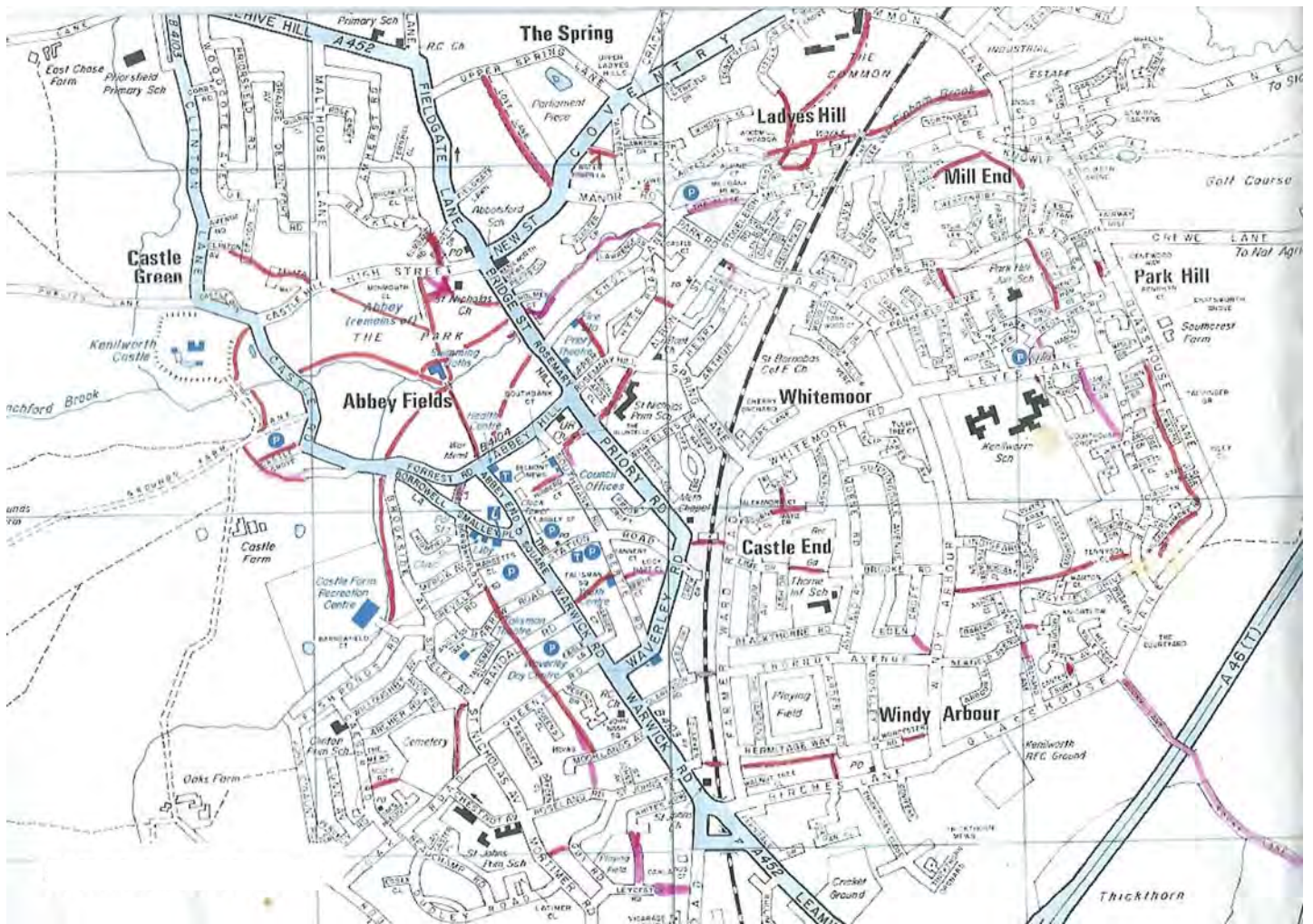


Legend

- Existing Cycle Links
- Proposed Cycle Routes
- National Cycle Route

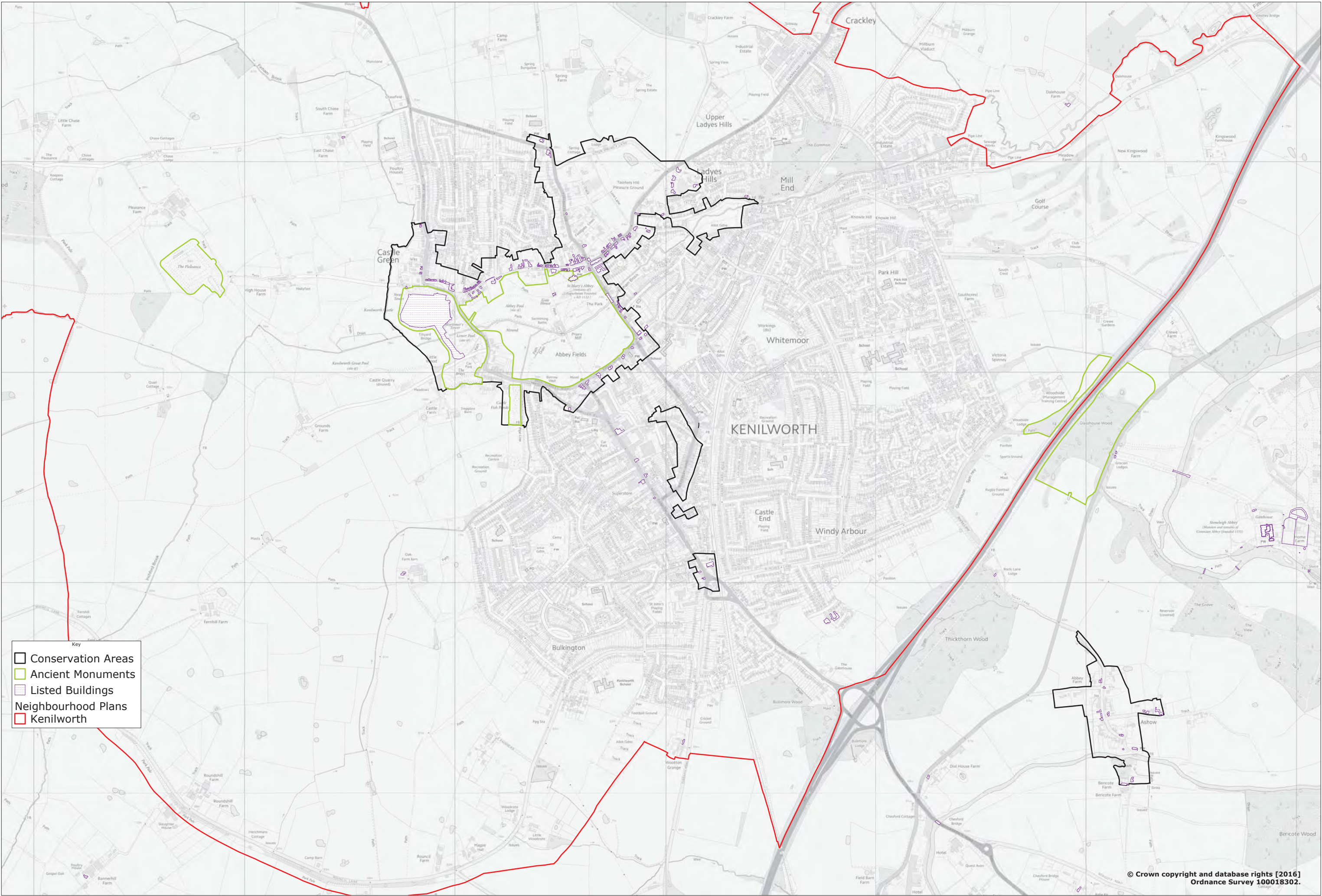


Communities
29 Jun 2018



Information Map 2.2: Kenilworth Urban footpaths

Street map of Kenilworth published by Viking Publicity & annotated with Kenilworth urban footpaths.



Key

- Conservation Areas
- Ancient Monuments
- Listed Buildings
- Neighbourhood Plans
- Kenilworth

Scale
0 80 160 240 320 400 m

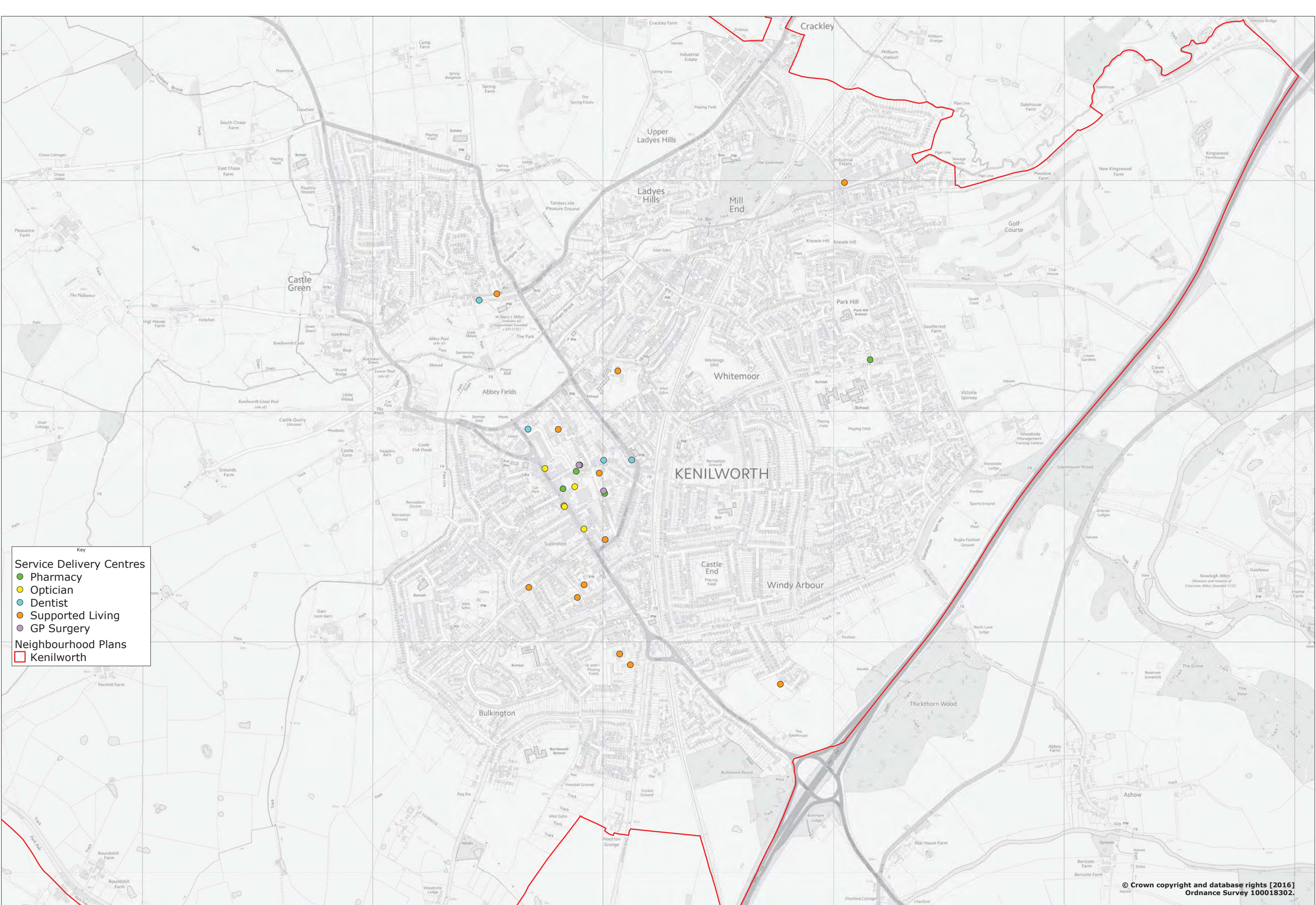
Scale: 1:5500 @A3

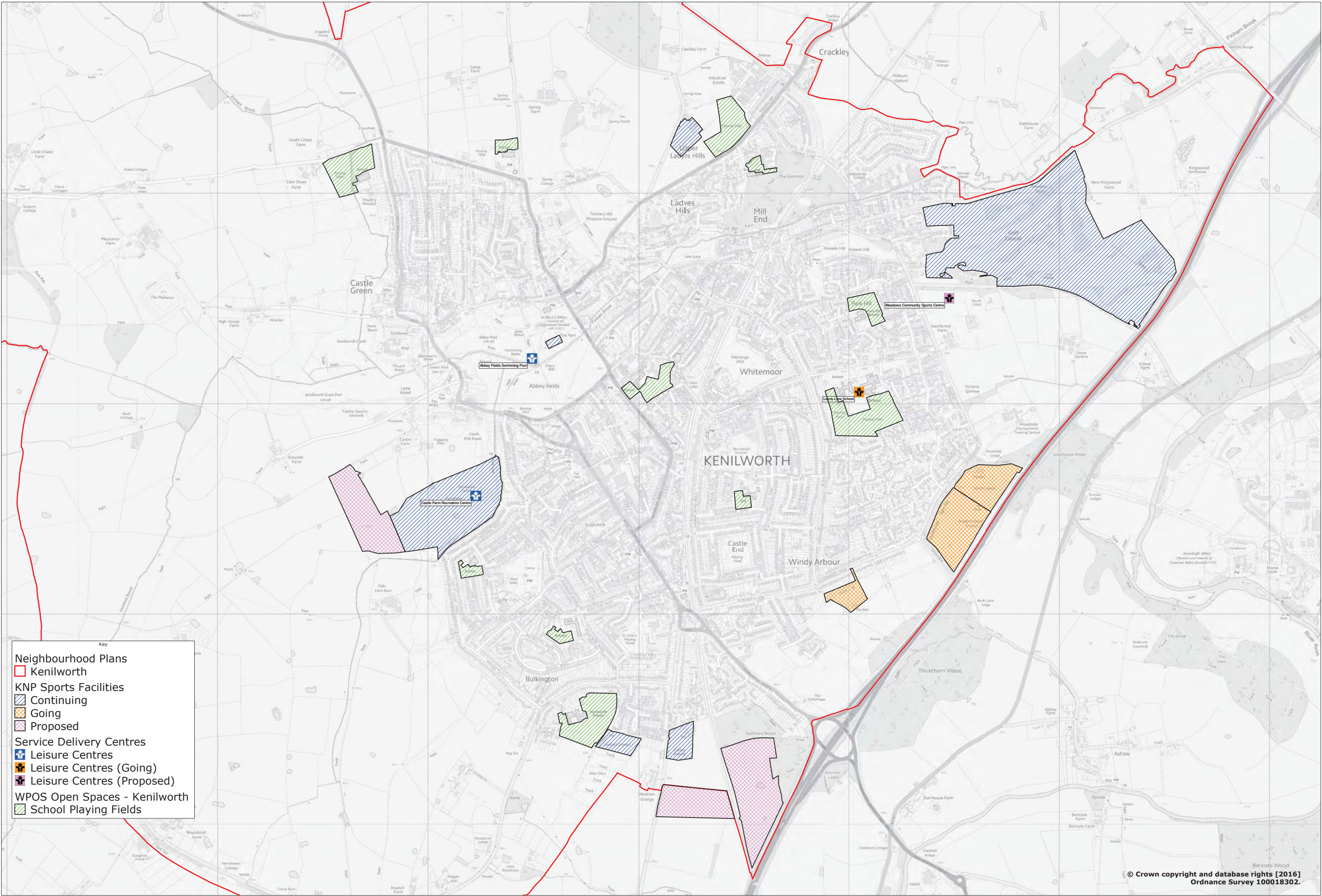
Information Map 2.3: Historic features

Drawn By: MB
Date: 01/02/2017



© Crown copyright and database rights [2016]
Ordnance Survey 100018302.





© Crown copyright and database rights [2016]
Ordnance Survey 100018302.

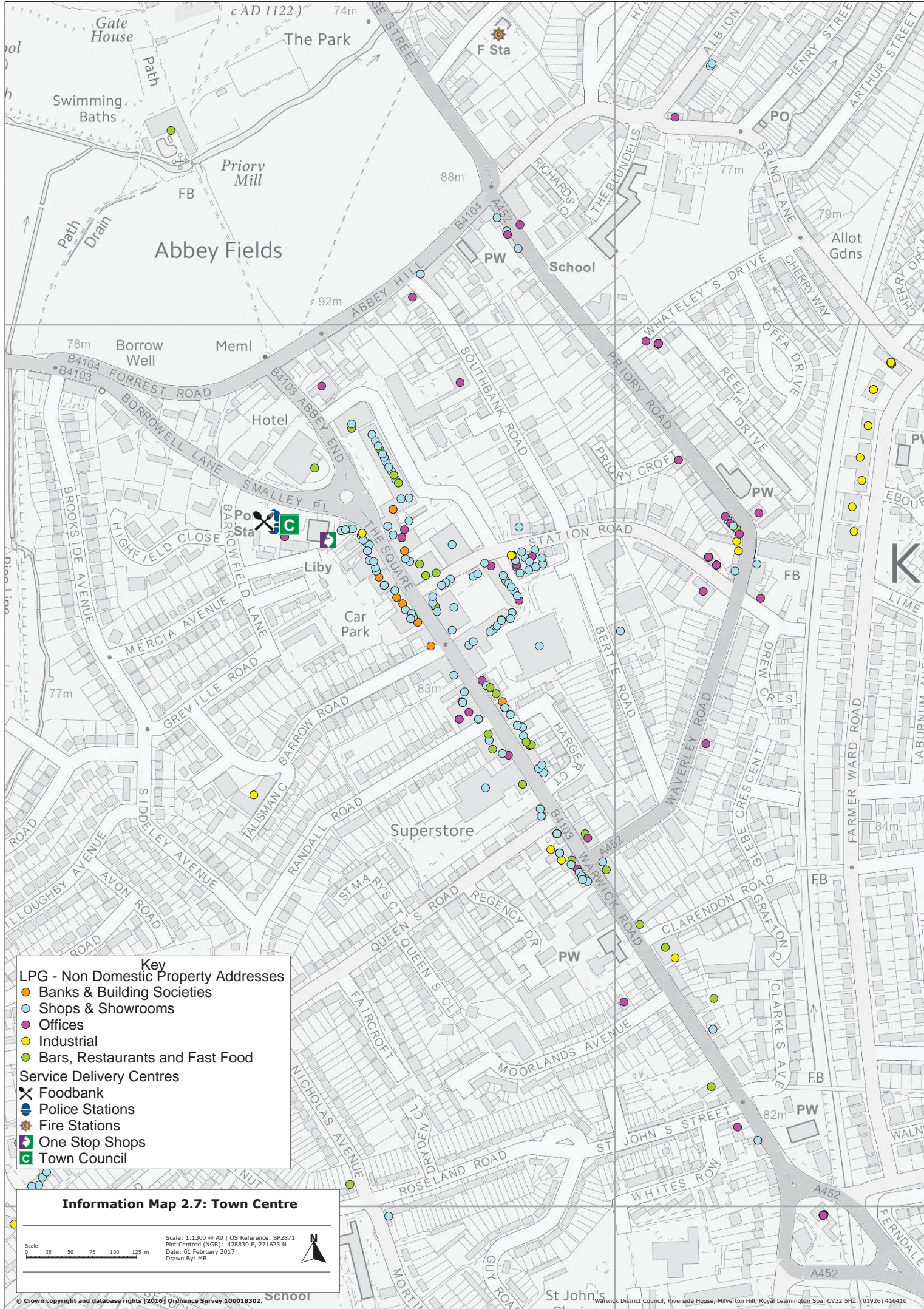
Scale
0 80 160 240 320 400 m

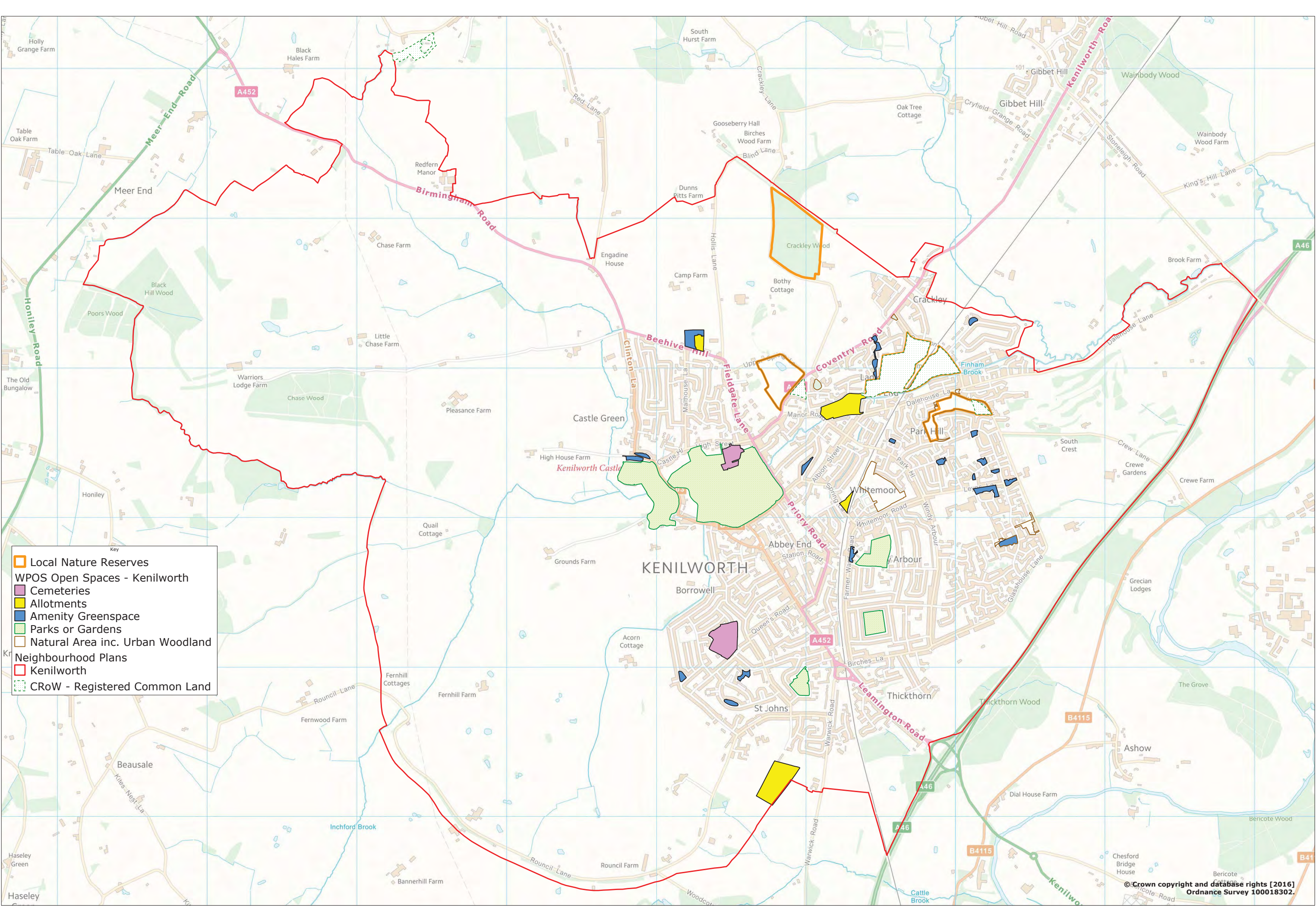
Scale: 1:5500 @A3

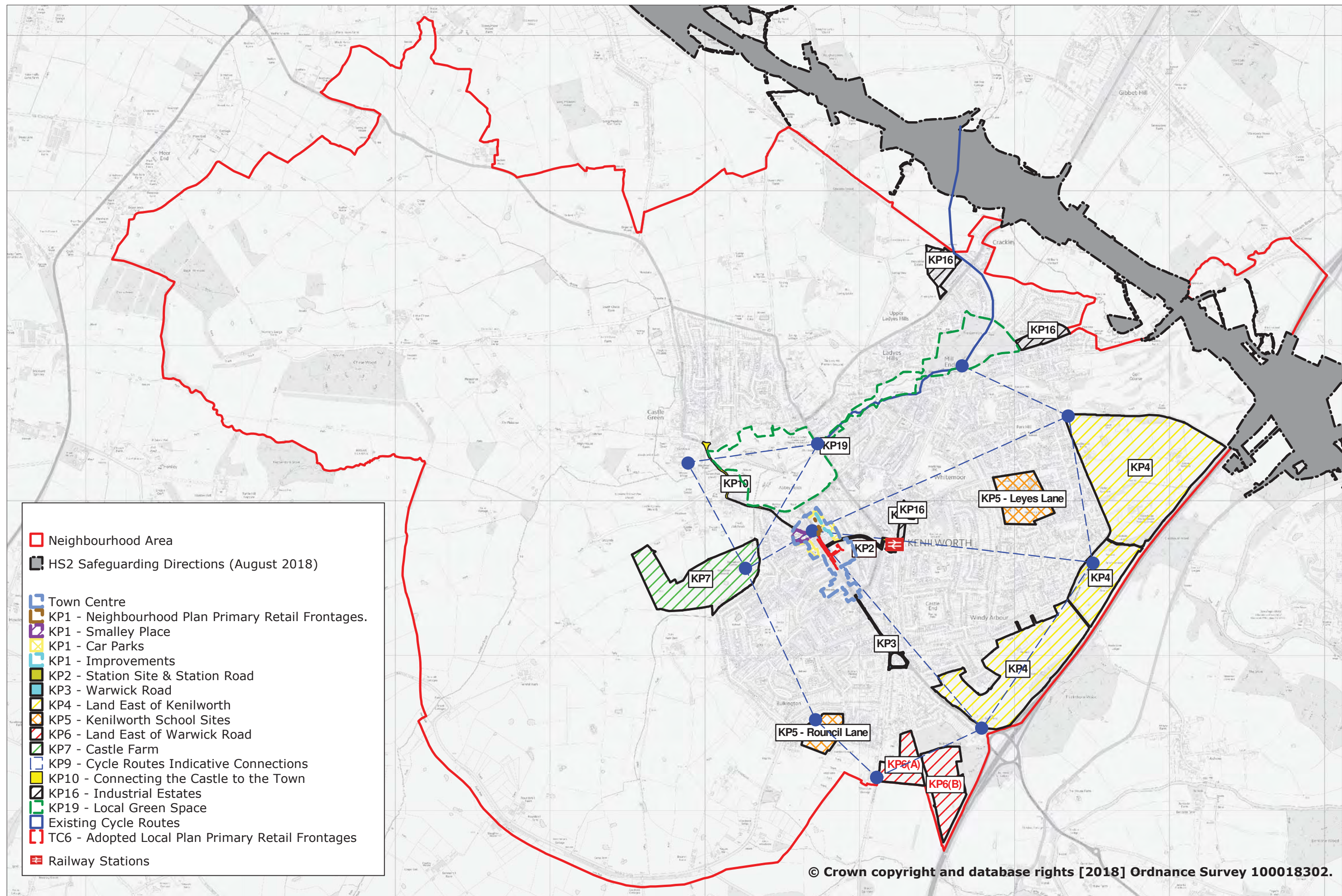
Information Map 2.6: Sports Infrastructure

Drawn By: MB
Date: 10/02/2017



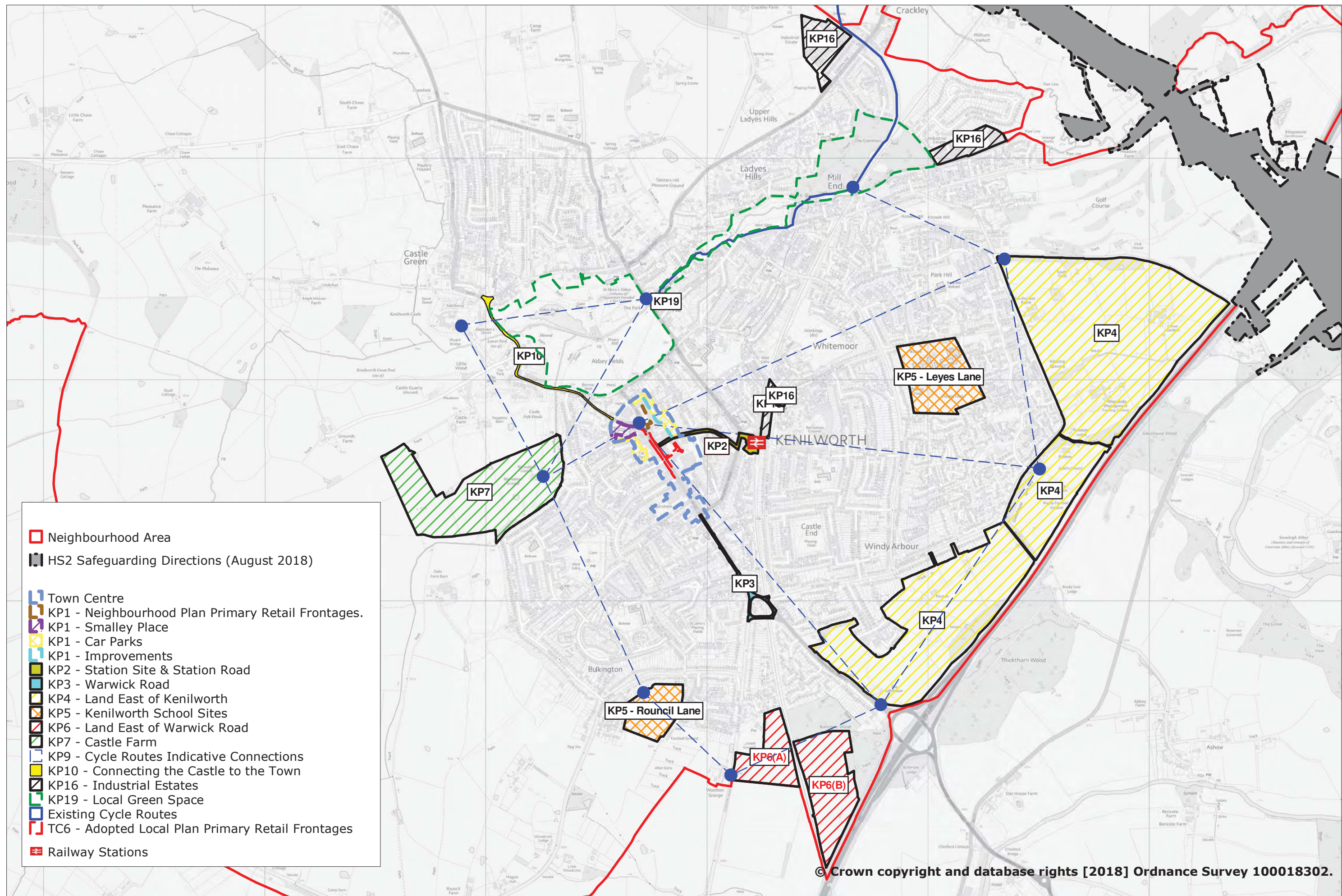






Policies Map 5.1: Kenilworth Neighbourhood Area

Scale: Not to Scale
 Drawn By: AJ
 Date: 26/09/2018



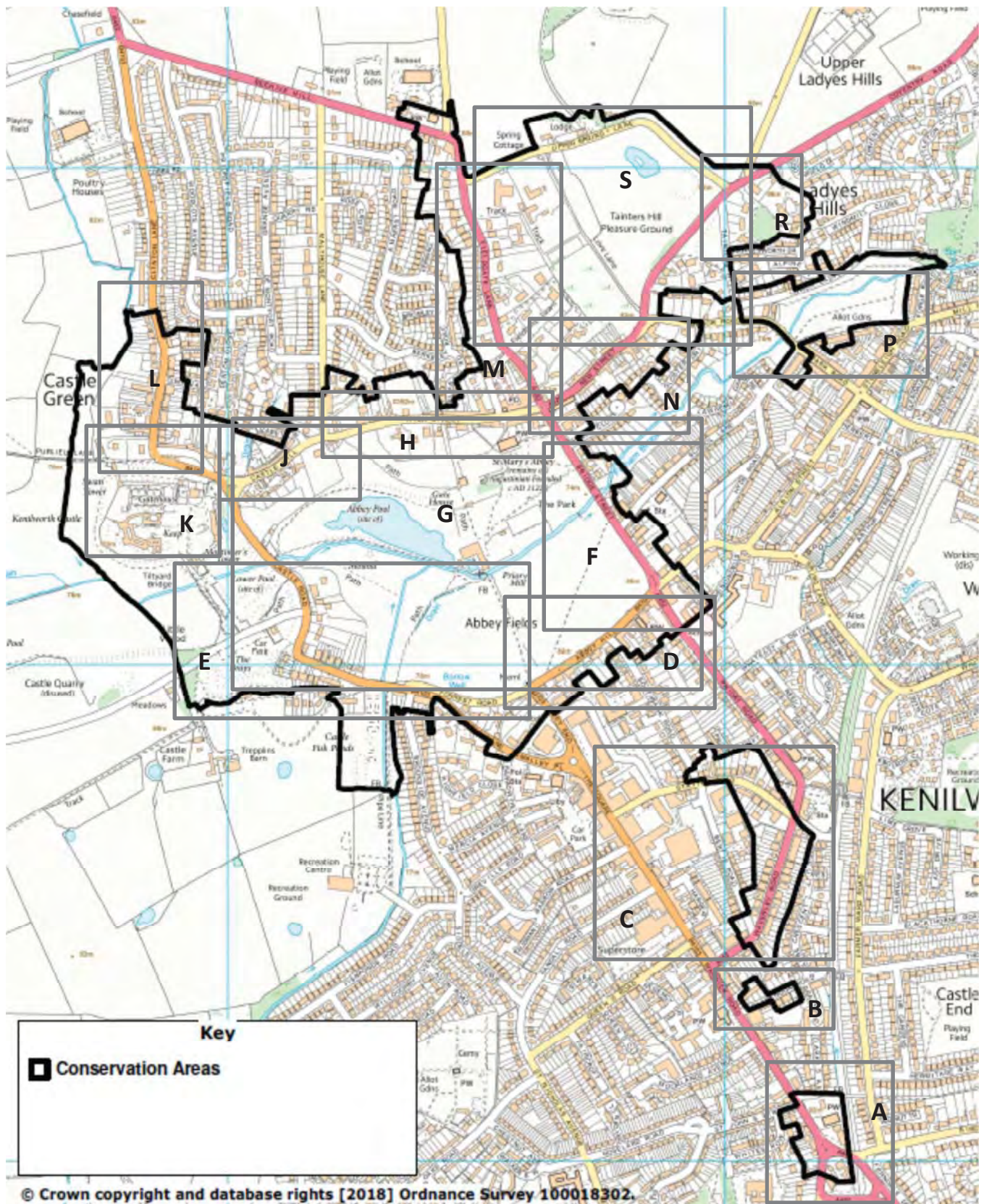
Policies Map 5.2: Urban Area of Kenilworth

Scale: Not to Scale
 Drawn By: AJ
 Date: 26/09/2018

Scale
 0 200 400 600 800 1000 m



Policy Map 5.4 – Character Areas – Policy KP13



Index to Kenilworth Character Areas

Kenilworth Neighbourhood Plan – v1-September 2018

Policy KP13A

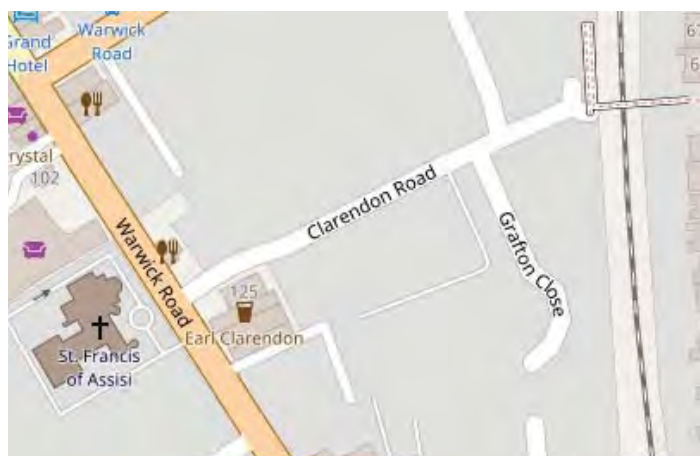
Design Management in St John's



Map by OpenStreetMap

Policy KP13B

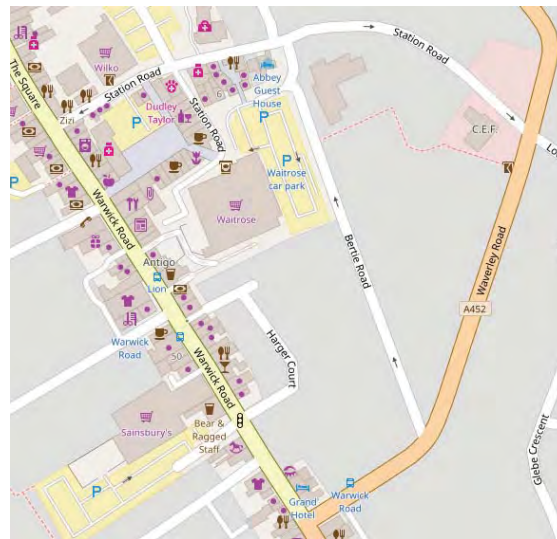
Design Management in Clarendon Road



Map by OpenStreetMap

Policy KP13C

Design Management in Station Road and Waverley Road



Map by OpenStreetMap

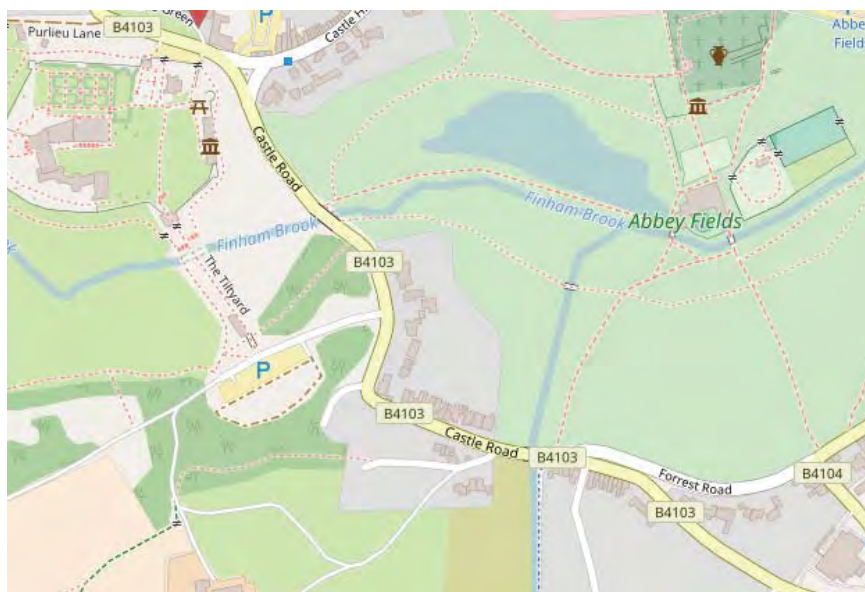
Policy KP13D

Design Management in Abbey Hill



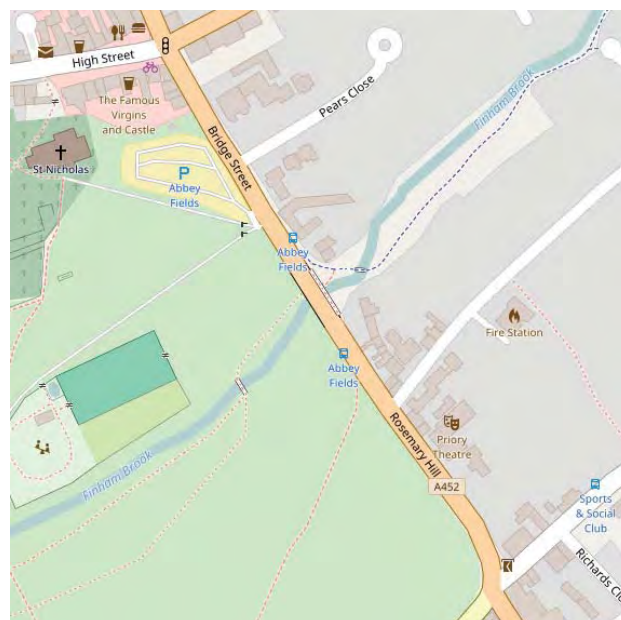
Map by OpenStreetMap

Policy KP13E Design Management in Forrest Road and Castle Road



Map by OpenStreetMap

Policy KP13F Design Management in Bridge Street



Map by OpenStreetMap

Policy KP13G Design Management in Abbey Fields



Map by OpenStreetMap

Policy KP13H Design Management in High Street



Map by OpenStreetMap

Policy KP13J

Design Management in Castle Hill and Little Virginia



Map by OpenStreetMap

Policy KP13K

Castle Green and the Castle



Map by OpenStreetMap

Policy KP13L

Design Management in Clinton Lane



Map by OpenStreetMap

Policy KP13M

Design Management in Fieldgate Lane

•



Map by OpenStreetMap

Policy KP13N

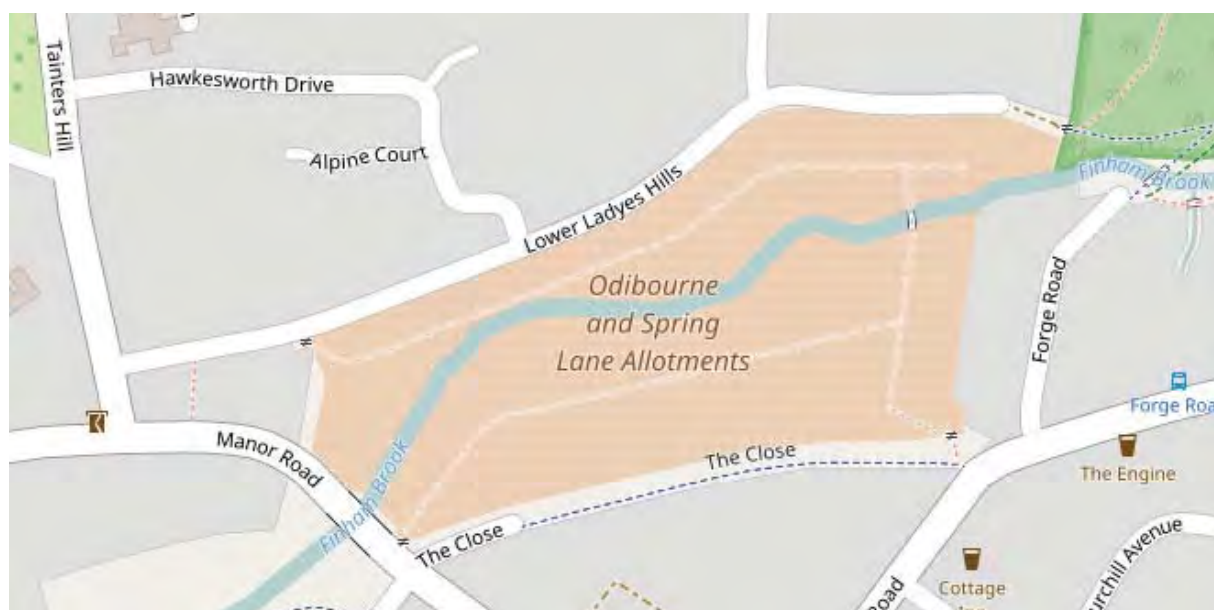
Design Management in New Street



Map by OpenStreetMap

**Policy KP13P
Allotments**

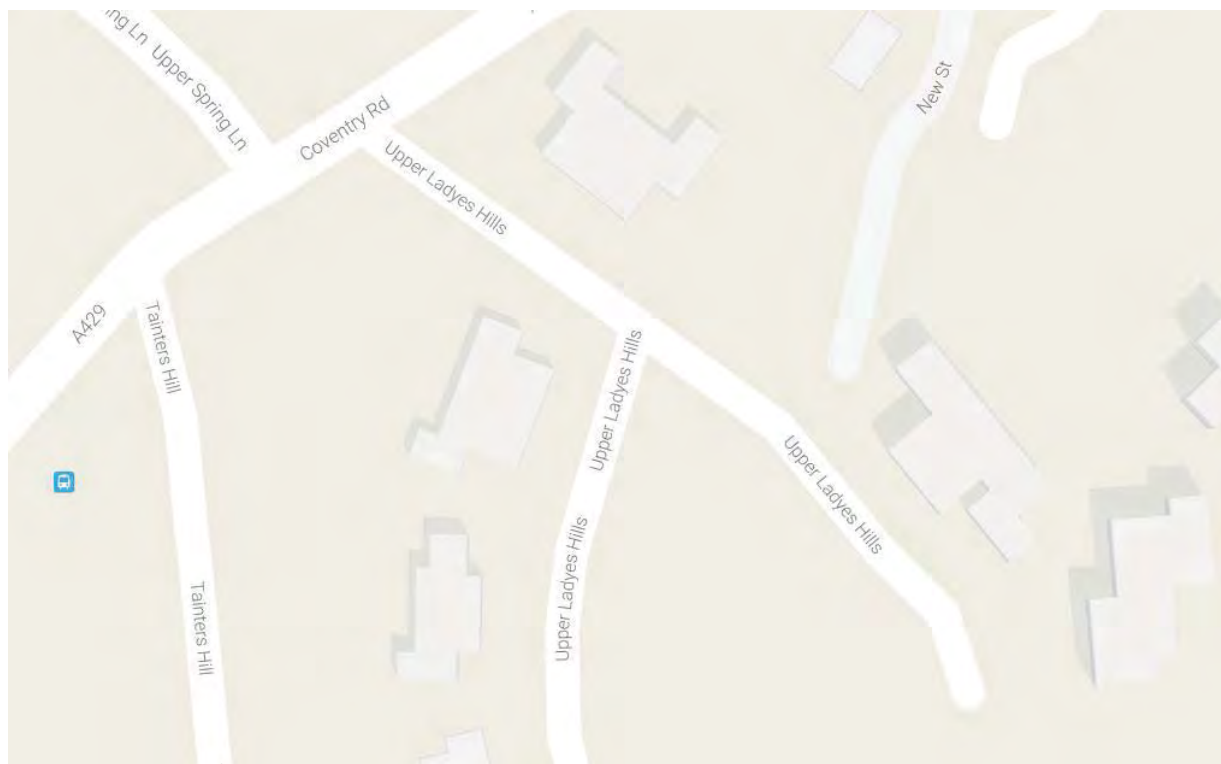
Design Management in Lower Ladyes Hill and the Odibourne



Map by OpenStreetMap

Policy KP14R

Design Management in Upper Ladyes Hill



Map by Google Maps

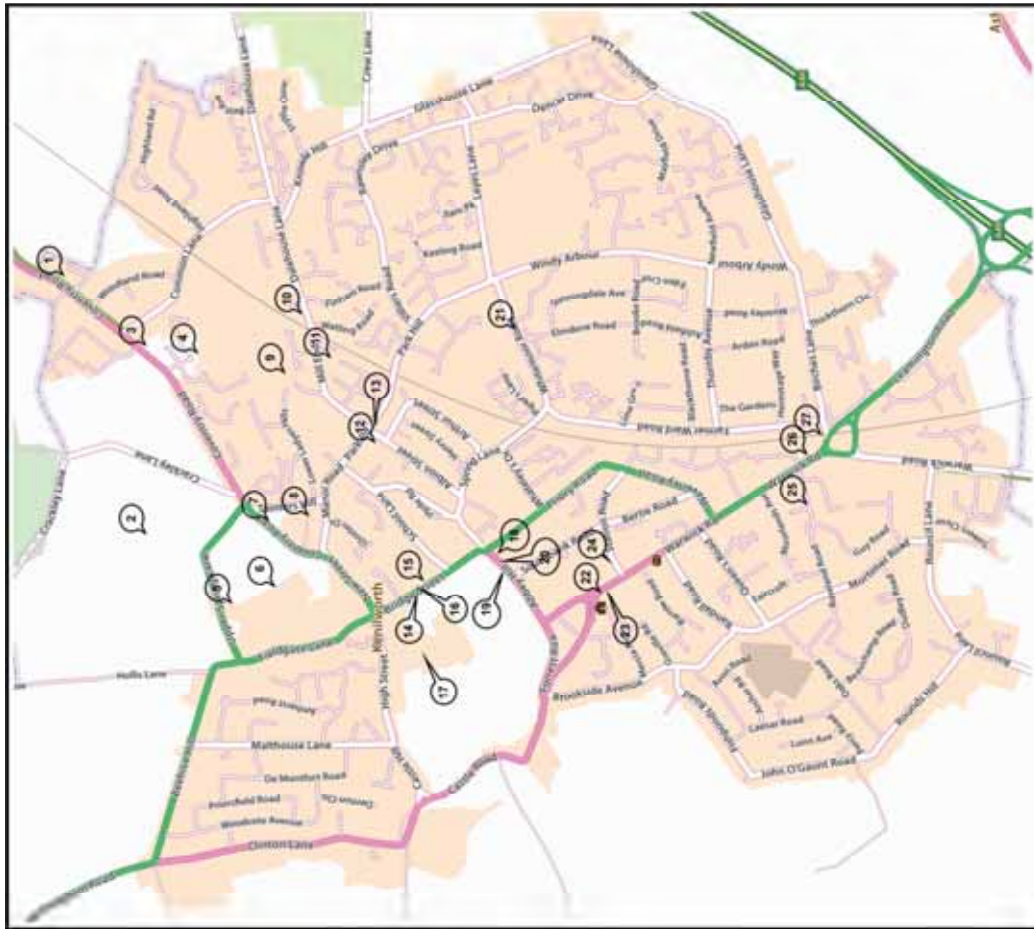
Policy KP13S

Design Management in Upper Spring Lane and Tainters Hill



Map by OpenStreetMap

Policy Map 5.5: Non-designated Heritage Assets – Policy KP14



		OS Grid Ref
1	Crackley Cottages, Coventry Road	SP 29768 73564
2	The Spring, Upper Spring Lane	SP 29167 7366C
3	Timber structure Bus Shelter, Crackley. WDC6	SP 29547 73296
4	Crackley Hall School main building	SP 29535 73083
5	Spring Cottage in Upper Spring Lane	SP 28648 73056
6	Greenhouses between Fieldgate Lane and Love Lane	SP 28668 7281C
7	Timber structure bus shelter, Tainters Hill WDC4	SP 28970 72905
8	The Water Tower, Tainters Hill.	SP 28972 72784
9	Water pumping station at Mill End	SP 29498 72815
10	1 Dalehouse Lane	SP 29717 72787
11	20 Mill End	SP 29520 72906
12	The Copper House Club, Albion Street	SP 29245 7254C
13	St Barnabas Church, Albion Street	SP 29281 72526
14	Townpool Bridge, Bridge St.	SP 28742 7234C
15	Outbuilding, 12 Bridge Street	SP 28772 72333
16	Timber structure bus shelter Bridge Street WDC4	SP 28753 7231C
17	Abbey Fields Bowling Pavilion	SP 28551 72262
18	Montpelier House, Abbey Hill	SP 28778 72054
19	Timber structure bus shelter Abbey Hill. WDC3	SP 28804 72106
20	United Reformed Church, Abbey Hill	SP 28826 72088
21	The Five Gables, Whitemoor Road	SP 29717 72081
22	Kenilworth Clock	SP 28714 71788
23	4 The Square	SP 28719 71762
24	The original Railway Station stonework of 1844	SP 28797 71715
25	The Old Council Houses, 34 to 40 St John's Street.	SP 29040 71087
26	Timber structure bus shelter. Warwick Rd, adj St John's Church	SP 29160 71107
27	Youth Club Building, St John's Church	SP 29238 71047