

# Notice of ground investigation surveys



August 2018 | [www.hs2.org.uk](http://www.hs2.org.uk)

High Speed Two (HS2) is the new high speed railway for Britain. Balfour Beatty Vinci is working on behalf of HS2 Ltd to build the new high speed railway in your area.

## What work will we be doing?

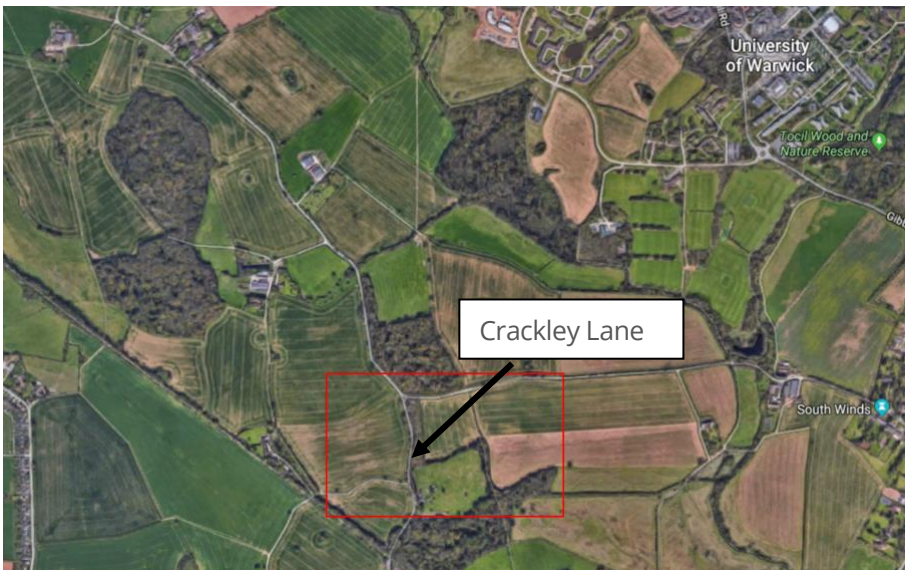
We will be undertaking ground investigation surveys which will help us to finalise the detail design for the route to be constructed.

## When will these works take place?

The ground investigations are planned to take place from 24<sup>th</sup> September and should last 2 weeks.

## Where is the work being carried out?

The work will take place on multiple fields South West of University of Warwick, off Crackley lane. Work will take place across multiple locations around the farm and fields.



If you have a question about HS2 or our works, please contact our helpdesk on 08081 434 434 or email [HS2enquiries@hs2.org.uk](mailto:HS2enquiries@hs2.org.uk)

## Duration of work

- The work is planned to take place from 24<sup>th</sup> September
- It will take approximately 2 weeks
- Our working hours will be Monday – Friday from 08:00-18:00.
- We do not have any plans to carry out work on Saturday or Sunday.

## What to expect

- Low levels of noise from our machinery.
- We may install signage on the roadside.
- We may install temporary work sites such as fencing and/or hoardings.

## What we will do

- Inform you in advance of any changes to the dates shown.
- Keep all sites safe and secure.

# Keeping you informed

We are committed to keeping you informed about work on HS2. This includes ensuring you know what to expect and when to expect it, as well as how we can help.

## Residents' Charter and Commissioner

The Residents' Charter is our promise to communicate as clearly as we possibly can with people who live along or near the HS2 route. [www.gov.uk/government/publications/hs2-residents-charter](http://www.gov.uk/government/publications/hs2-residents-charter)

We also have an independent Residents' Commissioner whose job is to make sure we keep to the promises we make in the Charter and to keep it under constant review. Find reports at: [www.gov.uk/government/collections/hs2-ltd-residents-commissioner](http://www.gov.uk/government/collections/hs2-ltd-residents-commissioner)

You can contact the Commissioner at: [residentscommissioner@hs2.org.uk](mailto:residentscommissioner@hs2.org.uk)

## Construction Commissioner

The Construction Commissioner's role is to mediate and monitor the way in which HS2 Ltd manages and responds to construction complaints. You can contact the Construction Commissioner by emailing [complaints@hs2-cc.org.uk](mailto:complaints@hs2-cc.org.uk)

## Property and compensation

You can find out all about HS2 and properties along the line of route by visiting: [www.gov.uk/government/collections/hs2-property](http://www.gov.uk/government/collections/hs2-property)

Find out if you're eligible for compensation at: [www.gov.uk/claim-compensation-if-affected-by-hs2](http://www.gov.uk/claim-compensation-if-affected-by-hs2)

## Contact us

If you have any questions about this notification of works, please get in touch.



**24/7 freephone** 08081 434 434



**Minicom** 08081 456 472



**Email** [HS2enquiries@hs2.org.uk](mailto:HS2enquiries@hs2.org.uk)

Write to:

**High Speed Two (HS2) Limited  
Two Snowhill  
Snow Hill Queensway  
Birmingham B4 6GA**

**Website** [www.hs2.org.uk](http://www.hs2.org.uk)

**Please contact us if you'd like a free copy of this document in large print, Braille, audio or easy read. You can also contact us for help and information in a different language.**

HS2 Ltd is committed to protecting personal information. If you wish to know more about how we use your personal information please see our Privacy Notice (<https://www.gov.uk/government/publications/high-speed-two-ltd-privacy-notice>).

Reference number: 1MC08-BBV-CO-CRO-N001-000008

# HS2