

M-EC

VectorMap Local

Published 2015

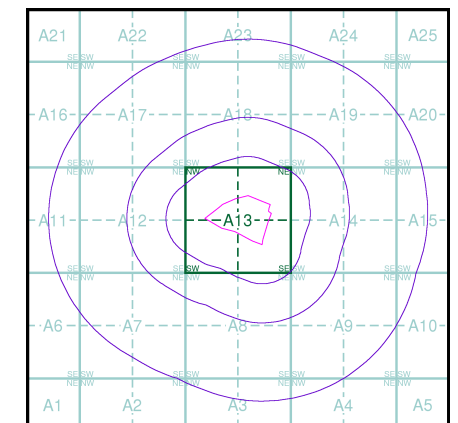
Source map scale - 1:10,000

VectorMap Local (Raster) is Ordnance Survey's highest detailed 'backdrop' mapping product. These maps are produced from OS's VectorMap Local, a simple vector dataset at a nominal scale of 1:10,000, covering the whole of Great Britain, that has been designed for creating graphical mapping. OS VectorMap Local is derived from large-scale information surveyed at 1:1250 scale (covering major towns and cities), 1:2500 scale (smaller towns, villages and developed rural areas), and 1:10 000 scale (mountain, moorland and river estuary areas).

Map Name(s) and Date(s)

SP26NW 2015 Variable	SP26NE 2015 Variable
SP26SW 2015 Variable	SP26SE 2015 Variable

Historical Map - Slice A



Order Details

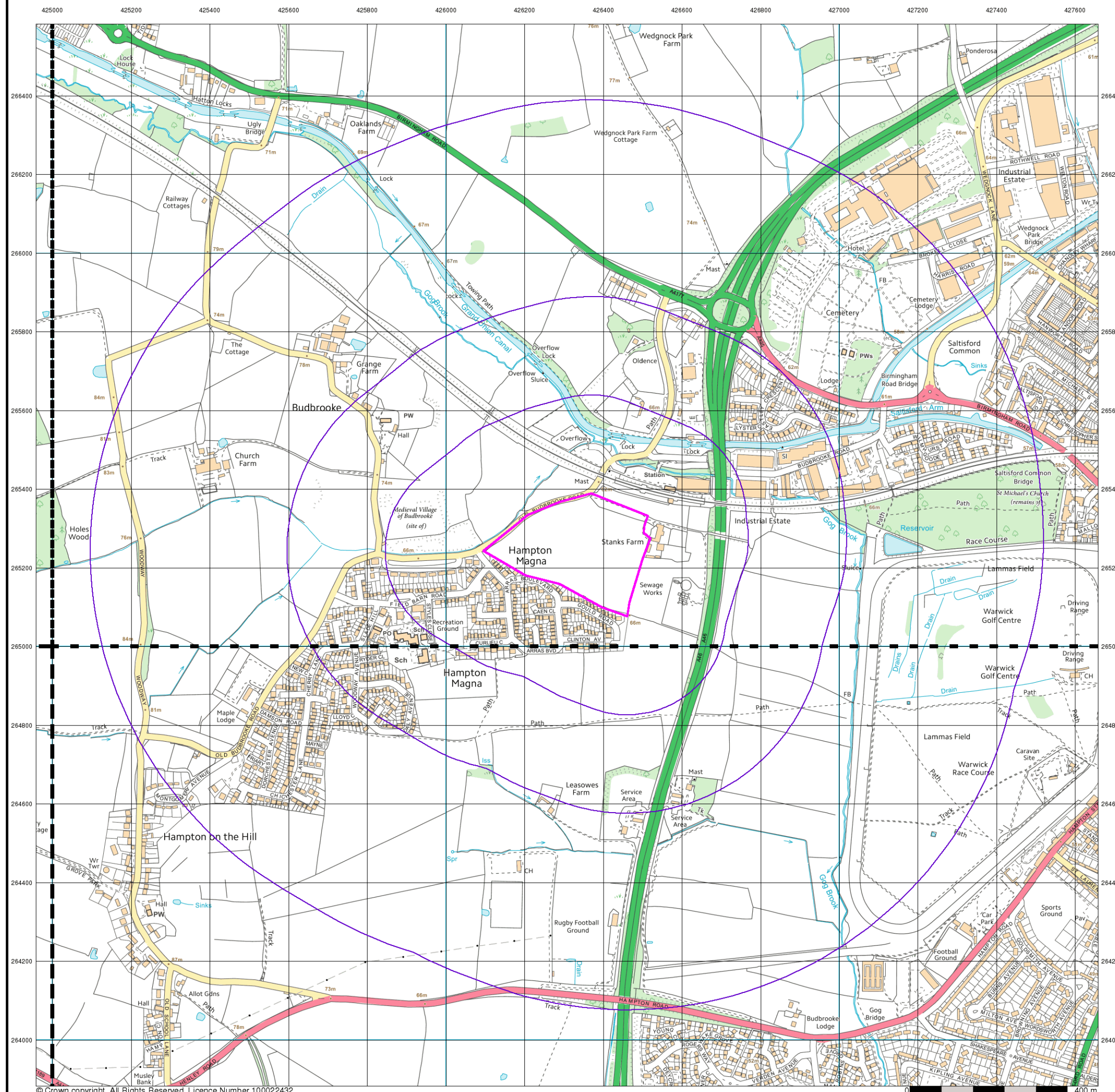
Order Number: 67587691_1_1
Customer Ref: 21119
National Grid Reference: 426330, 265240
Slice: A
Site Area (Ha): 7.67
Search Buffer (m): 1000

Site Details

Site at 426320, 265260



Tel: 0844 844 9952
Fax: 0844 844 9951
Web: www.envirocheck.co.uk



APPENDIX H



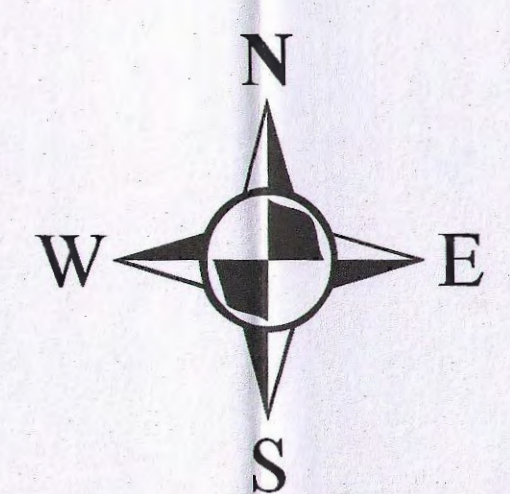
- | | |
|--------------------------------------|---------------------------------|
| Distribution Main | Pumping Facility |
| Trunk Main (local/primary) | Booster Facility |
| Strategic Main | Potable Water Storage |
| Fire Supply Main | Water Tower |
| Fire Main | Well / Borehole |
| Non-Domestic Customer Service Pipe | Intake |
| Domestic Customer Service Pipe | Water Treatment Works / Chamber |
| Abandoned Main | Draw-off Tower |
| Elevated Main | Bowser Point |
| Aqueduct | Water Facility Connection |
| Duct | |
| Cable, Earthing | |
| Cable, Optical Fibre/Instrumentation | |
| Cable, Low Voltage | |
| Cable, High Voltage | |
| Cable, Other | |

- | | |
|--|--------------------------------|
| Water Isolation Valve (Closed) | Water Chemical Injection Point |
| Water Isolation Valve (Open) | Motive Water Point |
| Water Isolation Valve (Partially Open) | Quality Sample Point |
| Water Air Valve | Change In Characteristic |
| Pressure Reducing Valve | Marker Post |
| Pressure Sustaining Valve | Cable Junction |
| Non-Return Valve | Anode |
| Float Valve | Boundary Box |
| Hydrant (Single/Double) | Stop tap |
| Washout (Single/Double) | Cross Piece |
| Bulk Meter | Strainer |
| Water Hatch Box | Listening Post |
| Pressure Tapping | Revenue Meter |
| Insertion Flow Meter Point | |

- | | |
|-------------------|------------------------|
| Housing, Building | Housing, Kiosk |
| Housing, Other | Pipe Support Structure |
| Open Pipe | Discharge |
| End Cap | SSSI Area |
| Protective Strip | Pre-1937 Properties |

- MATERIALS**
- | | |
|------|-----------------------------|
| AC | - ASBESTOS CEMENT |
| AK | - ALKATHENE |
| C | - CONCRETE |
| CI | - CAST IRON |
| CU | - COPPER |
| GF | - GLASS FIBRE |
| GRC | - GLASS REINFORCED CONCRETE |
| GRP | - GLASS REINFORCED PLASTIC |
| HDPE | - HIGH DENSITY POLY |
| HPPE | - HIGH PERFORMANCE POLY |
| LDPE | - LOW DENSITY POLY |
| LEAD | - LEAD |
| MDPE | - MEDIUM DENSITY POLY |
| O | - OTHER |
| PC | - PRE-STRESSED CONCRETE |
| PF | - PITCH FIBRE |
| PP | - POLY PROPYLENE |
| PSC | - PLASTIC STEEL COMPOSITE |
| PVC | - POLY VINYL CHLORIDE |
| RPM | - REINFORCED PLASTIC MATRIX |
| SI | - SPUN IRON |
| SST | - STAINLESS STEEL |
| ST | - STEEL |
| UPVC | - UNPLASTICISED PVC |

- LINING**
- | | |
|----|-----------|
| BI | - BITUMEN |
| CL | - CEMENT |
| PL | - PLASTIC |
| RL | - RESIN |
| O | - OTHER |



Severn Trent Water Limited
Asset Data Management
PO Box 5344
Coventry
CV3 9FT
Telephone: 0845 601 6616

WATER MAINS RECORD

O/S Map 1:1250
scale:
Date of issue: 30.03.15

This map is centred upon:
O / S Grid reference:
x : 426347
y : 265260

Disclaimer Statement

1. **Do not scale off this Map:**

2. This plan and any information supplied with it is furnished as a general guide, is only valid at the date of issue and no warranty as to its correctness is given or implied. In particular this plan and any information shown on it must not be relied upon in the event of any development or works (including but not limited to excavations) in the vicinity of SEVERN TRENT WATER assets or for the purposes of determining the suitability of a point of connection to the sewerage or distribution systems.

3. Reproduction by permission of Ordnance Survey on behalf of HMSO. © Crown Copyright and database right 2004. All rights reserved.
Ordnance Survey licence number **100018202**.

4. Document users other than SEVERN TRENT WATER business users are advised that this document is provided for reference purpose only and is subject to copyright, therefore, no further copies should be made from it.

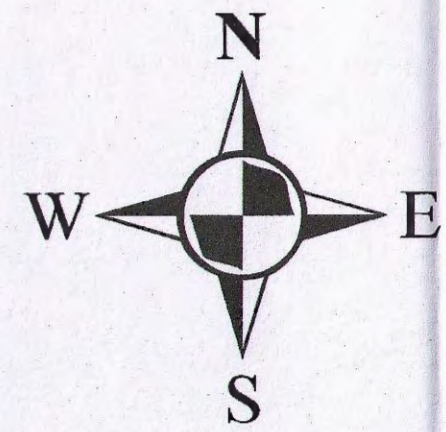


	Abandoned Sewer		Cable, Earthing		Blind Shaft
	Private Combined Gravity Sewer		Cable Junction		Combined Use Manhole
	Private Foul Gravity Sewer		Cable, Optical Fibre/Instrumentation		Flushing Chamber
	Private Surface Water Gravity Sewer		Cable, Low Voltage		Foul Use Manhole
	Public Combined Gravity Sewer		Cable, High Voltage		Grease Trap
	Public Foul Gravity Sewer		Cable, Other		Head Node
	Public Surface Water Gravity Sewer		Housing, Building		Hydrobrake
	Trunk Combined Gravity Sewer		Housing, Kiosk		Lamphole
	Trunk Foul Use Gravity Sewer		Disposal Site		Outfall
	Trunk Surface Water Gravity Sewer		Sewage Treatment Works		Overflow
	Combined Use Pressurised Sewer		Housing, Other		Penstock
	Foul Use Pressurised Sewer		Pipe Support Structure		Petrol Interceptor
	Surface Water Pressurised Sewer		Sewage Pumping Facility		
	Highway Drain		Sewer Facility Connection Inlet / Outlet		
	Combined Lateral Drain (SS)				
	Foul Lateral Drain (SS)				
	Surface Water Lateral Drain (SS)				

CATEGORIES

- W - WEIR
- C - CASCADE
- DB - DAMBOARD
- SE - SIDE ENTRY
- FV - FLAP VALVE
- BD - BACK DROP
- S - SIPHON
- HD - HIGHWAY DRAIN
- S104 - SECTION 104

All Private Sewers are shown in magenta
All section 104 sewers are shown in green
All Sewers that have been transferred to Severn Trent Water after the 1st October 2011, but have not been surveyed and confirmed by Severn Trent Water are shown in orange



Severn Trent Water Limited
Asset Data Management
PO Box 5344
Coventry
CV3 9FT
Telephone: 0845 601 6616

SEWER RECORD

O/S Map 1:1250
scale:
Date of issue: 30.03.15

This map is centred upon:
O / S Grid reference:
x : 426347
y : 265260

Disclaimer Statement:
1. Do not scale off this Map.
2. This map and any information supplied with it is furnished as a general guide, is only valid at the date of issue and no warranty as to its correctness is given or implied. In particular this Map and any information shown on it must not be relied upon in the event of any development or works (including but not limited to excavations) in the vicinity of Severn Trent Water's assets or for the purposes of determining the suitability of a point of connection to the sewerage or distribution systems.
3. On 1 October 2011 most private sewers and private lateral drains in Severn Trent Water's sewerage area, which were connected to a public sewer as at 1 July 2011, transferred to the ownership of Severn Trent Water and became public sewers and public lateral drains. A further transfer takes place on 1 October 2012 (date to be confirmed). Private pumping stations, which form part of these sewers or lateral drains, will transfer to the ownership of Severn Trent Water on or before 1 October 2016.
Severn Trent Water does not possess complete records of these assets.
These assets may not be displayed on this Map.
4. Reproduction by permission of Ordnance Survey on behalf of HMSO. © Crown Copyright and database right 2004. All rights reserved. Ordnance Survey licence number 100018202. Document users other than Severn Trent Water business users are advised that this document is provided for reference purpose only and is subject to copyright, therefore, no further copies should be made from it.

Contact Us

Mapping Enquiries:

All areas 0121 623 9780

General Enquiries:

Midlands 0845 724 0240
South Wales 0845 601 3341
South West 0845 601 2989

Date Requested: 27/03/2015

Job Reference: 6620891

Site Location: 426334 265226

Requested by: Mr Andy Roberts

Your Scheme/Reference: 21119

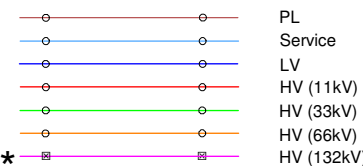
IMPORTANT NOTICES

- These plans are provided as a general guide only. Services or recent additions to the network may not be shown.
- Cables, overhead lines & substations owned by other electricity network owners or private companies may be present but will not be shown.
- You should always verify exact locations of cables using a cable locator and by careful use of hand tools in accordance with HSE guidance note HSG47.
- When working within 10m of any overhead electric line you should follow the requirements of HSE Guidance Note GS6.
- For further advice on working near our electricity cables or lines, call our Contact Centre on 0800 096 3080.

Report damage immediately – KEEP EVERYONE AWAY FROM THE AREA

0800 6783 105

Overhead Line



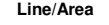
SURF Telecoms



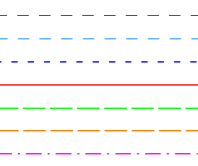
Link Box



Site Location



Underground Cable



Pilot Cables



Pole Mounted Transformer



Ground Mounted Transformer



*Advice should be sought from the Western Power Distribution Contact Centre for any work that is to take place in proximity to 132kV underground cables and 132kV overhead lines – 0800 096 3080

Crown Copyright © All Rights Reserved. Ordnance Survey Licence numbers: EL27318X, 100024877 and 100021807.
WPD Copyright: This copy has been made by or with the authority of Western Power Distribution (WPD) pursuant to Section 47 of the Copyright Designs and Patents Act 1988 unless that Act provides a relevant exception to copyright the copy must not be copied without the prior permission of the copyright owner

Contact Us

Mapping Enquiries:

All areas 0121 623 9780

General Enquiries:

Midlands 0845 724 0240
South Wales 0845 601 3341
South West 0845 601 2989

Date Requested: 27/03/2015

Job Reference: 6620891

Site Location: 426334 265226

Requested by: Mr Andy Roberts

Your Scheme/Reference: 21119

1:1250 Area or Circle dig site

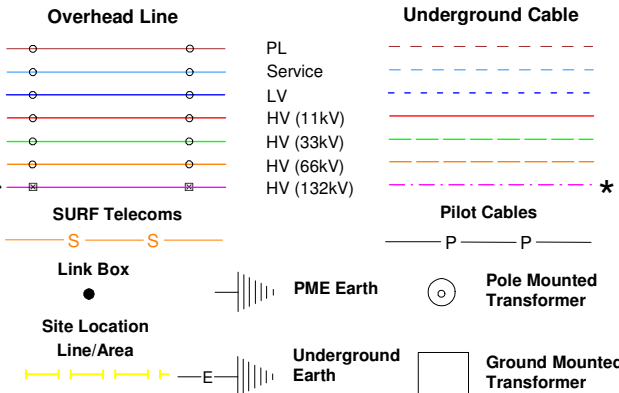
1:500 Line dig site

IMPORTANT NOTICES

- These plans are provided as a general guide only. Services or recent additions to the network may not be shown.
- Cables, overhead lines & substations owned by other electricity network owners or private companies may be present but will not be shown.
- You should always verify exact locations of cables using a cable locator and by careful use of hand tools in accordance with HSE guidance note HSG47.
- When working within 10m of any overhead electric line you should follow the requirements of HSE Guidance Note GS6.
- For further advice on working near our electricity cables or lines, call our Contact Centre on 0800 096 3080.

Report damage immediately – KEEP EVERYONE AWAY FROM THE AREA

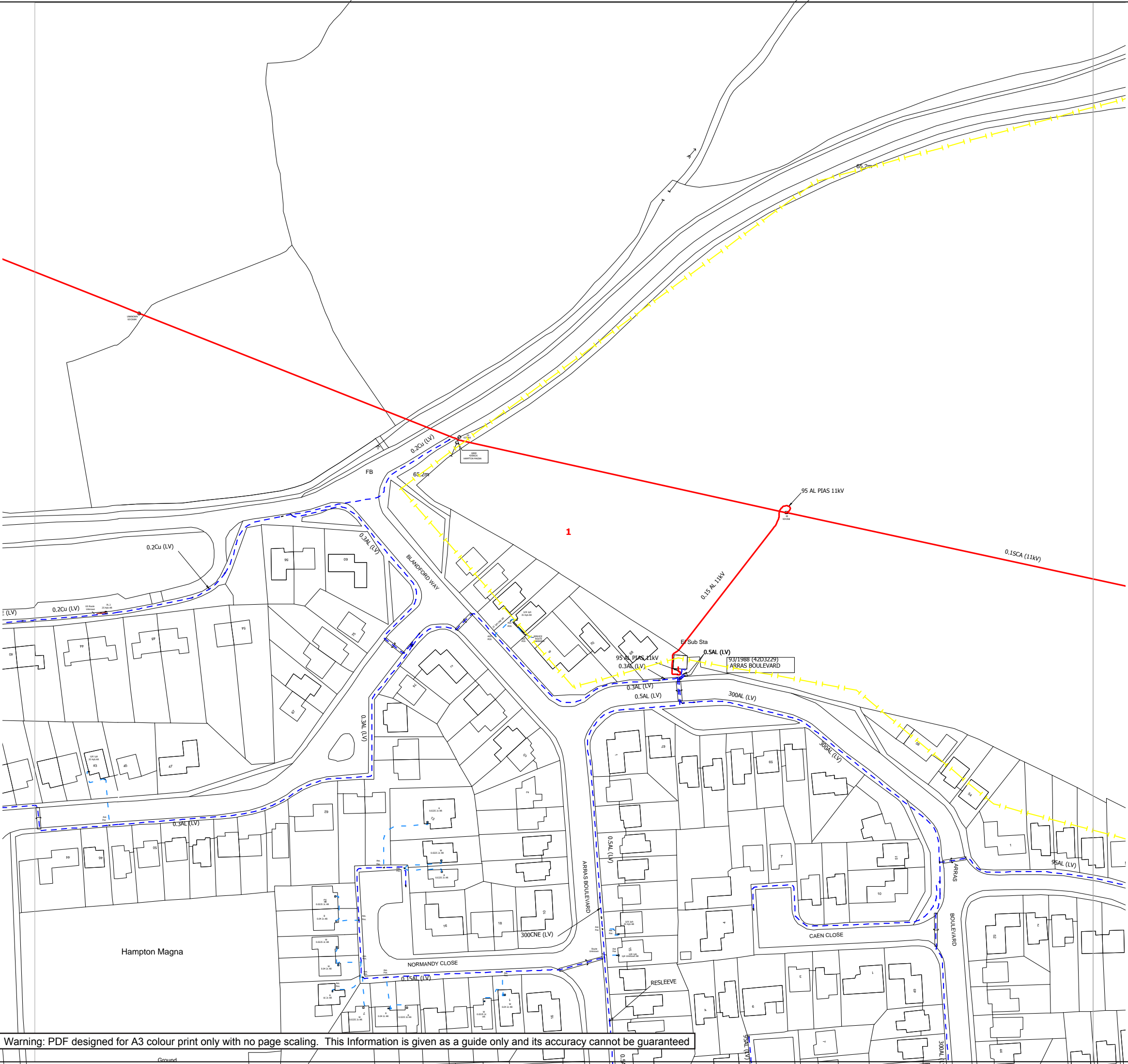
0800 6783 105



*Advice should be sought from the Western Power Distribution Contact Centre for any work that is to take place in proximity to 132kV underground cables and 132kV overhead lines – 0800 096 3080

Crown Copyright © All Rights Reserved. Ordnance Survey Licence numbers: EL27318X, 100024877 and 100021807.

WPD Copyright: This copy has been made by or with the authority of Western Power Distribution (WPD) pursuant to Section 47 of the Copyright Designs and Patents Act 1988 unless that Act provides a relevant exception to copyright the copy must not be copied without the prior permission of the copyright owner





Serving the Midlands, South West and Wales

Contact Us

Mapping Enquiries:
All areas 0121 623 9780

General Enquiries:	
Midlands	0845 724 0240
South Wales	0845 601 3341
South West	0845 601 2989

Date Requested: 27/03/2015

Job Reference: 6620891

Site Location: 426334 265226

Requested by: Mr Andy Roberts

Your Scheme/Reference: 21119

1:1250 Area or Circle dig site

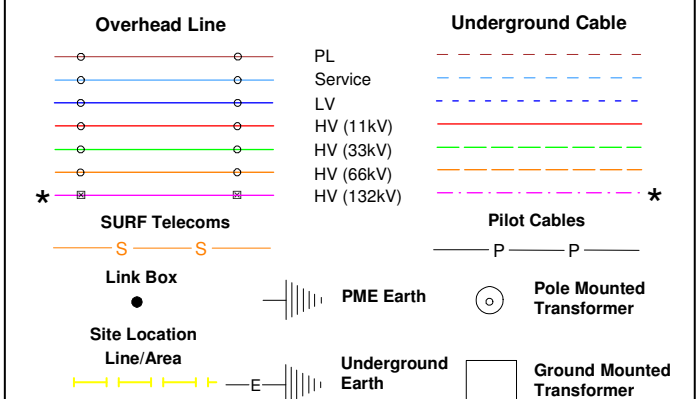
1:500 Line dig site

IMPORTANT NOTICES

- These plans are provided as a general guide only. Services or recent additions to the network may not be shown.
- Cables, overhead lines & substations owned by other electricity network owners or private companies may be present but will not be shown.
- You should always verify exact locations of cables using a cable locator and by careful use of hand tools in accordance with HSE guidance note HSG47.
- When working within 10m of any overhead electric line you should follow the requirements of HSE Guidance Note GS6.
- For further advice on working near our electricity cables or lines, call our Contact Centre on 0800 096 3080.

Report damage immediately – KEEP EVERYONE AWAY FROM THE AREA

0800 6783 105



*Advice should be sought from the Western Power Distribution Contact Centre for any work that is to take place in proximity to 132kV underground cables and 132kV overhead lines – 0800 096 3080

Crown Copyright © All Rights Reserved. Ordnance Survey Licence numbers: EL27318X, 100024877 and 100021807.

WPD Copyright: This copy has been made by or with the authority of Western Power Distribution (WPD) pursuant to Section 47 of the Copyright Designs and Patents Act 1988 unless that Act provides a relevant exception to copyright the copy must not be copied without the prior permission of the copyright owner

Warning: PDF designed for A3 colour print only with no page scaling. This Information is given as a guide only and its accuracy cannot be guaranteed



Victoria Jarvis
M-EC Consulting Development Engineers
Wellington House..
Leicester Road
Ibstock
Leicestershire
LE67 6HP

Plant Protection
National Grid
Block 1; Floor 1
Brick Kiln Street
Hinckley
LE10 0NA
E-mail: plantprotection@nationalgrid.com
Telephone: +44 (0)800 688588

National Grid Electricity Emergency Number:
0800 40 40 90*

National Gas Emergency Number:
0800 111 999*

* Available 24 hours, 7 days/week.
Calls may be recorded and monitored.

www.nationalgrid.com

Date: 28/03/2015

Our Ref: WM_TW_Z3_3SWP_142011

Your Ref: 21119

RE: Proposed Works, Old Budbrooke Road, Hampton Magna, Warwickshire

Thank you for your enquiry which was received on 27/03/2015.
Please note this response and any attached map(s) are valid for 28 days.

An assessment has been carried out with respect to National Grid Electricity Transmission plc's and National Grid Gas plc's apparatus. Please note it does not cover the items listed in the section "Your Responsibilities and Obligations", including gas service pipes and related apparatus.

For details of National Grid's network areas please see the National Grid website
(<http://www.nationalgrid.com/uk/Gas/Safety/work/>) or the enclosed documentation.

As your works are at a "proposed" stage, any maps and guidance provided are for information purposes only. This is not approval to commence work. You must submit a "Scheduled Works" enquiry at the earliest opportunity and failure to do this may lead to disruption to your plans and works. National Grid will endeavour to provide an initial assessment within 14 days of receipt of a Scheduled Works enquiry and dependent on the outcome of this, further consultation may be required.

In any event, for safety and legal reasons, works must not be carried out until a Scheduled Works enquiry has been completed and final response received.

Your Responsibilities and Obligations

The "Assessment" Section below outlines the detailed requirements that must be followed when planning or undertaking your scheduled activities at this location.

It is your responsibility to ensure that the information you have submitted is accurate and that all relevant documents including links are provided to all persons (either direct labour or contractors) working for you near National Grid's apparatus, e.g. as contained within the Construction (Design and Management) Regulations.

This assessment solely relates to National Grid Electricity Transmission plc (NGET) and National Grid Gas plc (NGG) apparatus. This assessment does **NOT** include:

- National Grid's legal interest (easements or wayleaves) in the land which restricts activity in proximity to National Grid's assets in private land. You must obtain details of any such restrictions from the landowner in the first instance and if in doubt contact National Grid.
- Gas service pipes and related apparatus
- Recently installed apparatus
- Apparatus owned by other organisations, e.g. other gas distribution operators, local electricity companies, other utilities, etc.

It is **YOUR** responsibility to take into account whether the items listed above may be present and if they could be affected by your proposed activities. Further "Essential Guidance" in respect of these items can be found on the National Grid Website (<http://www.nationalgrid.com/NR/rdonlyres/6D6525F9-59EB-4825-BA89-DBD7E68882C7/51319/EssentialGuidance.pdf>).

This communication does not constitute any formal agreement or consent for any proposed development work; either generally or with regard to National Grid's easements or wayleaves nor any planning or building regulations applications.

NGG and NGET or their agents, servants or contractors do not accept any liability for any losses arising under or in connection with this information. This limit on liability applies to all and any claims in contract, tort (including negligence), misrepresentation (excluding fraudulent misrepresentation), breach of statutory duty or otherwise. This limit on liability does not exclude or restrict liability where prohibited by the law nor does it supersede the express terms of any related agreements.

If you require further assistance please contact the National Grid Plant Protection team via e-mail ([click here](#)) or via the contact details at the top of this response.

Yours faithfully

National Grid Plant Protection Team

ASSESSMENT

Affected Apparatus

The National Grid apparatus that has been identified as being in the vicinity of your proposed works is:

- Low or Medium pressure (below 2 bar) gas pipes and associated equipment. (As a result it is highly likely that there are gas services and associated apparatus in the vicinity)

Requirements

BEFORE carrying out any work you must:

- Carefully read these requirements including the attached guidance documents and maps showing the location of National Grid apparatus.
- Contact the landowner and ensure any proposed works in private land do not infringe National Grid's legal rights (i.e. easements or wayleaves). If the works are in the road or footpath the relevant local authority should be contacted.
- Ensure that all persons, including direct labour and contractors, working for you on or near National Grid's apparatus follow the requirements of the HSE Guidance Notes HSG47 - 'Avoiding Danger from Underground Services' and GS6 – 'Avoidance of danger from overhead electric power lines'. This guidance can be downloaded free of charge at <http://www.hse.gov.uk>
- In line with the above guidance, verify and establish the actual position of mains, pipes, cables, services and other apparatus on site before any activities are undertaken.

GUIDANCE

Excavating Safely - Avoiding injury when working near gas pipes:

http://www.nationalgrid.com/NR/rdonlyres/2D2EEA97-B213-459C-9A26-18361C6E0B0D/25249/Digsafe_leaflet3e2finalamends061207.pdf

Standard Guidance

Essential Guidance document:

<http://www.nationalgrid.com/NR/rdonlyres/6D6525F9-59EB-4825-BA89-DBD7E68882C7/51319/EssentialGuidance.pdf>

General Guidance document:

<http://www2.nationalgrid.com/WorkArea/DownloadAsset.aspx?id=35103>

Excavating Safely in the vicinity of gas pipes guidance (Credit card):

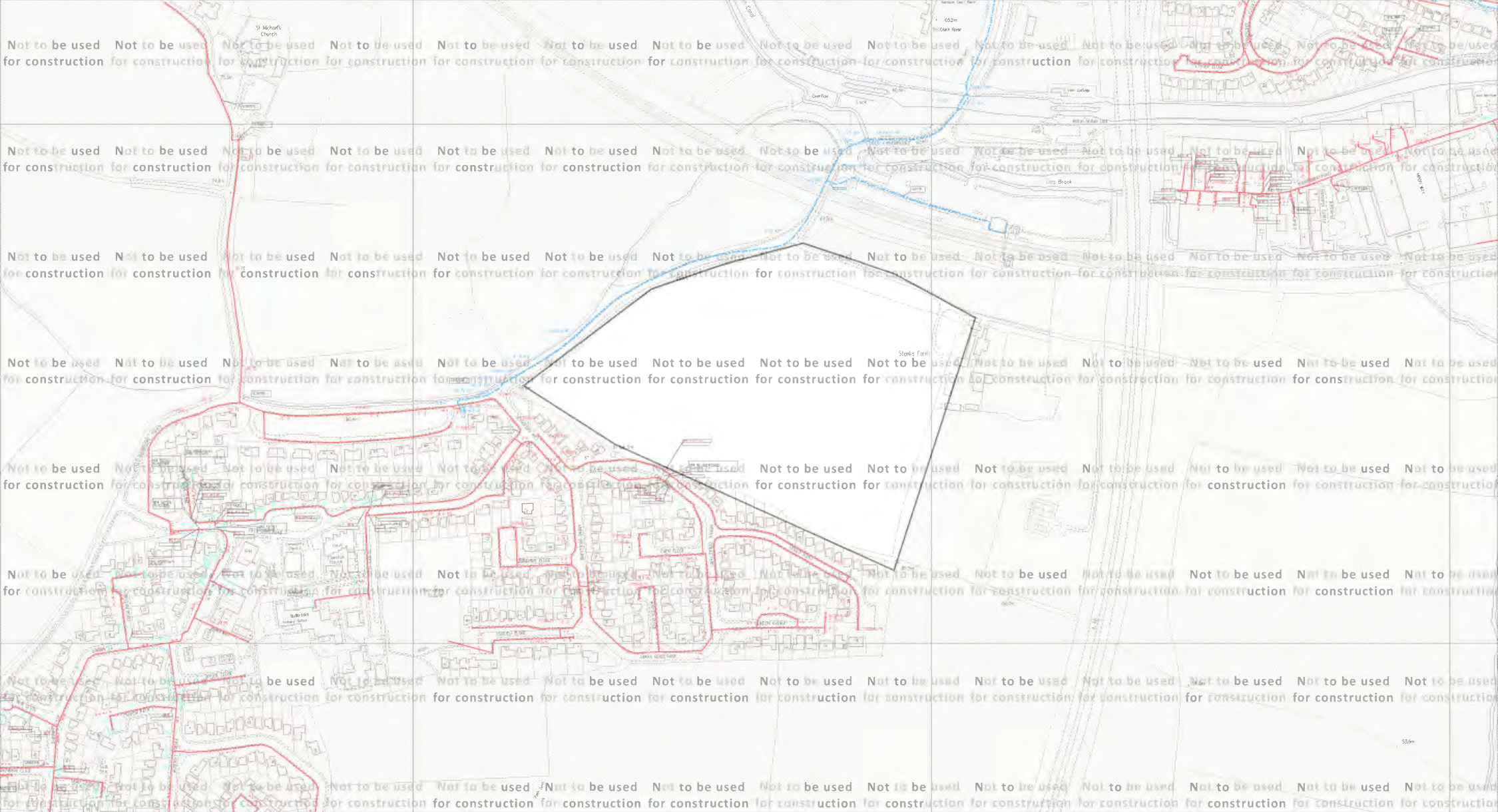
<http://www.nationalgrid.com/NR/rdonlyres/A3D37677-6641-476C-9DDA-E89949052829/44257/ExcavatingSafelyCreditCard.pdf>

Excavating Safely in the vicinity of electricity cables guidance (Credit card):

<http://www.nationalgrid.com/NR/rdonlyres/35DDEC6D-D754-4BA5-AF3C-D607D05A25C2/44858/ExcavatingSafelyCreditCardelectricitycables.pdf>

Copies of all the Guidance Documents can also be downloaded from the National Grid Website:

<http://www.nationalgrid.com/uk/Gas/Safety/work/downloads/>



ID: WM_TW_Z3_3SWP_142011		View extent: 1445m, 785m	Map not to be used for construction	Map 1 of 1 (GAS)
USER: ros.jones	LP MAINS		<p>This plan shows those pipes owned by National Grid Gas plc in its role as a Licensed Gas Transporter (GT). Gas pipes owned by other GTs, or otherwise privately owned, may be present in this area. Information with regard to such pipes should be obtained from the relevant owners. The information shown on this plan is given without warranty, the accuracy thereof cannot be guaranteed. Service pipes, valves, syphons, stub connections, etc., are not shown but their presence should be anticipated. No liability of any kind whatsoever is accepted by National Grid Gas plc or their agents, servants or contractors for any error or omission. Safe digging practices, in accordance with HS(G)47, must be used to verify and establish the actual position of mains, pipes, services and other apparatus on site before any mechanical plant is used. It is your responsibility to ensure that this information is provided to all persons (either direct labour or contractors) working for you on or near gas apparatus. The information included on this plan should not be referred to beyond a period of 28 days from the date of issue.</p>	MAPS Plot Server Version 1.8.0
DATE: 28/03/2015	MP MAINS			
DATA DATE: 26/03/2015	IP MAINS			
	LHP MAINS			
REF: 21119	NHP MAINS			
MAP REF: SP2665	 Approximate scale 1:5000 on A4 Colour Landscape			Requested by: M-EC Consulting Development Engineers
CENTRE: 426324, 265228				
		Depth of Cover	Syphon	<p>This plan is reproduced from or based on the OS map by National Grid Gas plc, with the sanction of the controller of HM Stationery Office. Crown Copyright Reserved. Ordnance Survey Licence number 100024886</p>
		Diameter Change	Material Change	

ENQUIRY SUMMARY

Received Date

27/03/2015

Your Reference

21119

Location

Centre Point: 426324, 265228

X Extent: 438

Y Extent: 317

Location Description: Old Budbrooke Road, Hampton Magna, Warwickshire

Map Options

Paper Size: A4

Orientation: LANDSCAPE

Requested Scale: 2500

Actual Scale: 1:5000 (GAS)

Real World Extents: 1445m x 785m (GAS)

Recipients

pprsteam@nationalgrid.com

Enquirer Details

Organisation Name: M-EC Consulting Development Engineers

Contact Name: Victoria Jarvis

Email Address: Victoria.Jarvis@m-ec.co.uk

Telephone: 01530 264753

Address: Wellington House..., Leicester Road, Ibstock , Leicestershire, LE67 6HP

Description of Works

Development at Old Budbrooke Road, Hampton Magna

Enquiry Type

Proposed Works

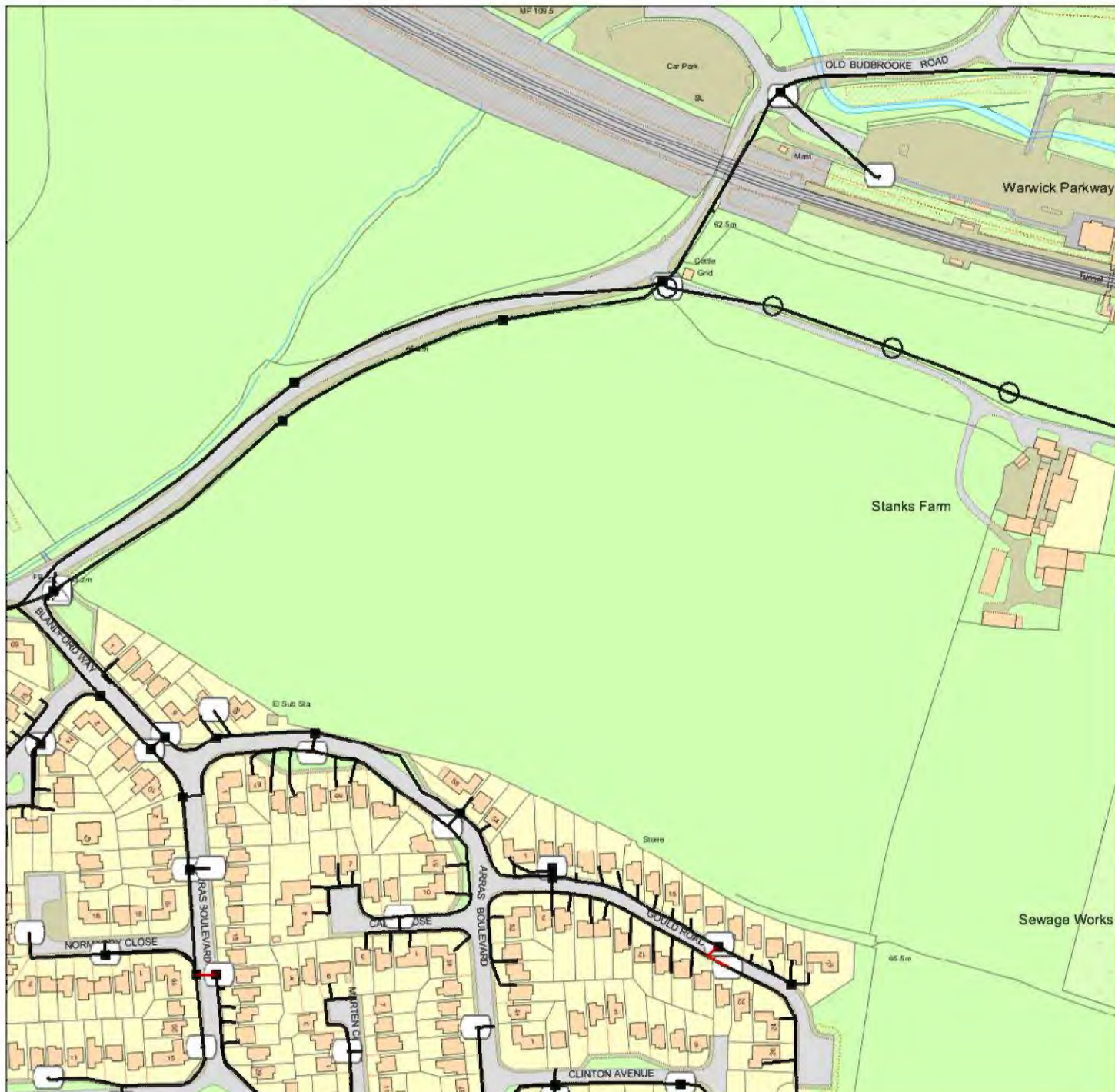
Activity Type

Development Project

Work Types

Work Type: Plans Only

Maps by email Plant Information Reply



IMPORTANT WARNING

Information regarding the location of BT apparatus is given for your assistance and is intended for general guidance only. No guarantee is given of its accuracy.

It should not be relied upon in the event of excavations or other works being made near to BT apparatus which may exist at various depths and may deviate from the marked route.

DIAL BEFORE YOU DIG

FOR PROFESSIONAL ON SITE ASSISTANCE PRIOR TO COMMENCEMENT OF EXCAVATION WORKS

ADVANCE NOTICE REQUIRED
(Office hours: Monday-Friday 08.00 to 17.00)

Tel: 0800 9173993
E-mail: dbyd@openreach.co.uk
Website: www.dialbeforeyoudig.com

Reproduced from the Ordnance Survey map by BT by permission of Ordnance Survey on behalf of the Controller of Her Majesty's Stationary Office
(C) Crown Copyright British Telecommunications plc 100028040

KEY TO BT SYMBOLS

	UNDERGROUND PLANT		POLE
	OVERHEAD PLANT		CABINET
	JOINT BOX		BURIED JOINT
	DISTRIBUTION POINT		JOINTING POST
	MANHOLE		PROPOSED U/G
	DP BOUNDARY		PROPOSED O/H
	OTHER BT BOUNDARY		PROPOSED BOX

Other proposed plant is shown using dashed lines. BT symbols not listed above may be disregarded. Existing BT plant may not be recorded. Information valid at the time of preparation.

openreach
a BT Group business

BT Ref : KAC10569M

Map Reference : (centre) SP2632365259

Easting/Northing : (centre) 426323,265259

Issued : 27/03/2015 10:56:36

FOOTNOTE: WARNING IT IS ESSENTIAL THAT YOU CONTACT NATIONAL NETWORK HANDLING CENTRE BY EMAIL nnhc@openreach.co.uk BEFORE PROCEEDING WITH ANY WORK IN THE HATCHED AREA



(c) Crown Copyright and database rights 2011 Ordnance Survey 100019209

Date: 13/04/15

Scale: 1:4715

Map Centre: 426323,265259

Data updated: 22/02/15

Telecoms Plan A4

Important Information - please read

The purpose of this plan is to identify Virgin Media apparatus. We have tried to make it as accurate as possible but we cannot warrant its accuracy. In addition, we caution that within Virgin Media apparatus there may be instances where mains voltage power cables have been placed inside green, rather than black ducting. Further details can be found using the 'Affected Postcodes.pdf', which can be downloaded from this website.

Therefore, you must not rely solely on this plan if you are carrying out any excavation or other works in the vicinity of Virgin Media apparatus. The actual position of any underground service must be verified by cable detection equipment, etc. and established on site before any mechanical plant is used. Accordingly, unless it is due to the negligence of Virgin Media, its employees or agents, Virgin Media will not have any liability for any omissions or inaccuracies in the plan or for any loss or damage caused or arising from the use of and/or any reliance on this plan.

This plan is produced by Virgin Media Limited from Ordnance Survey © Crown Copyright 100019209

Duct, Trench



Chamber



Cabinet



alasonjennifer.nathan@virginmedia.co.uk

VM.115714



Civil Engineering

Drainage

Flood Risk

Transport

Highways

Structures

Geotechnics

Contamination

Sustainability

Environment

Services

Surveying



Wellington House
Leicester Road, Ibstock
Leicestershire
LE67 6HP

T: 01530 264 753
F: 01530 588 116
ibstock@m-ec.co.uk
www.m-ec.co.uk

Consulting **Development** Engineers