

Route 41 – General information.

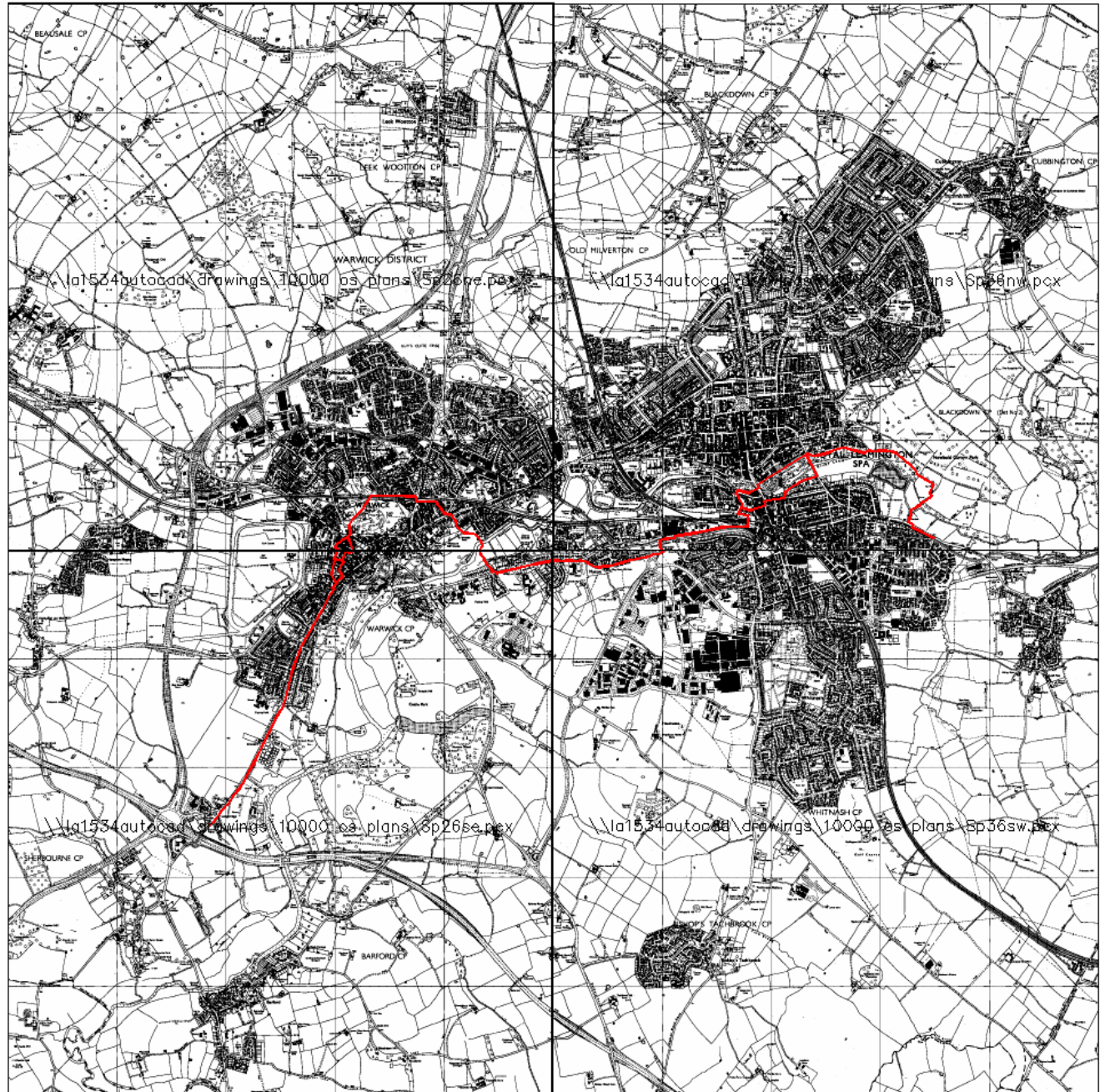
Route 41, shown in red, connects the district boundary by the M40 near Longbridge with the outskirts of Royal Leamington Spa at the Grand Union Canal in Radford Semele. This route has now been extended further east to Birdingbury.

The route forms part of the National Cycle Network between Rugby and Stratford upon Avon and doubles as part of the 'Heart of England Ride' which connect Derby with Stratford upon Avon.

Warwick District Council have worked closely with Warwickshire County Council, Sustrans and Local Cycling Groups to achieve this route.

Route 41 – Details.

The route descends from the Radford Road in Royal Leamington Spa from the Grand Union Canal and continues along the south side



footway. This is a shared use path for both pedestrians and cyclists. The route then crosses the road and again continues along a shared use path into the car park where it crosses the river Leam. From the bridge another shared use tarmac path takes you to the Newbold Comyn Leisure Centre. A shared use tarmac path then leads from the Leisure Centre through a section of public open space, parallel with Newbold Terrace East.

At the crossroads with Willes Road, there is a cycle crossing facility, taking the route across to Newbold Terrace. The route then goes across to the Pump Room Gardens where there is a cycle parking facility. Cyclists are then asked to dismount whilst crossing the bridge over the river Leam. After the bridge, the route takes the left turn leading to Spencer Street where there is currently a zebra crossing taking the cyclist and pedestrian over to a shared use path that leads to the railway station. The route then goes right along Old Warwick Road to a toucan crossing by the Ford Foundry where a purpose built bridge takes the route over the Grand Union Canal. It continues for a short distance to the Moorings. A dedicated cycle-path then takes the route around the Myton Road estate where it eventually becomes a two way cycle route on the

southern footway. The route then crosses into St Nicholas Park and over the river Leam and emerges on the Emscote Road. Here a toucan crossing takes the route over and into Broad Street and then Guys Cliffe Terrace. The route pick's up again along the footpath to the railway station from the Coventry Road, continuing into Priory Park where it goes under the railway bridge and up the hill to meet with Cape Road, by the Police station. There are then proposals for Northgate Street, Old Square, New Street, Market Place, Brook Street to link to Westgate and out onto the Stratford Road. The Stratford Road has a shared use path on the south east side of the road which links to Manor Lodge and the lane that takes the route to the footbridge over the M40 towards Sherbourne and Barford.