

- Key**
- SHLAA Site Boundary
 - Initial 500m search area
 - Listed Buildings**
 - Grade**
 - Listed building - Grade I
 - Listed building - Grade II*
 - Listed building - Grade II
 - Scheduled monument
 - Registered park or garden
 - Conservation Area
 - Warwickshire HER Monument
 - Warwickshire HER Monument
 - District Boundary

Note:
 The Historic England GIS Data combined in this dataset was
 as of 15/02/2017. The data is available up to date
 Historic England GIS Data can be obtained from
<http://www.historicengland.org.uk>.

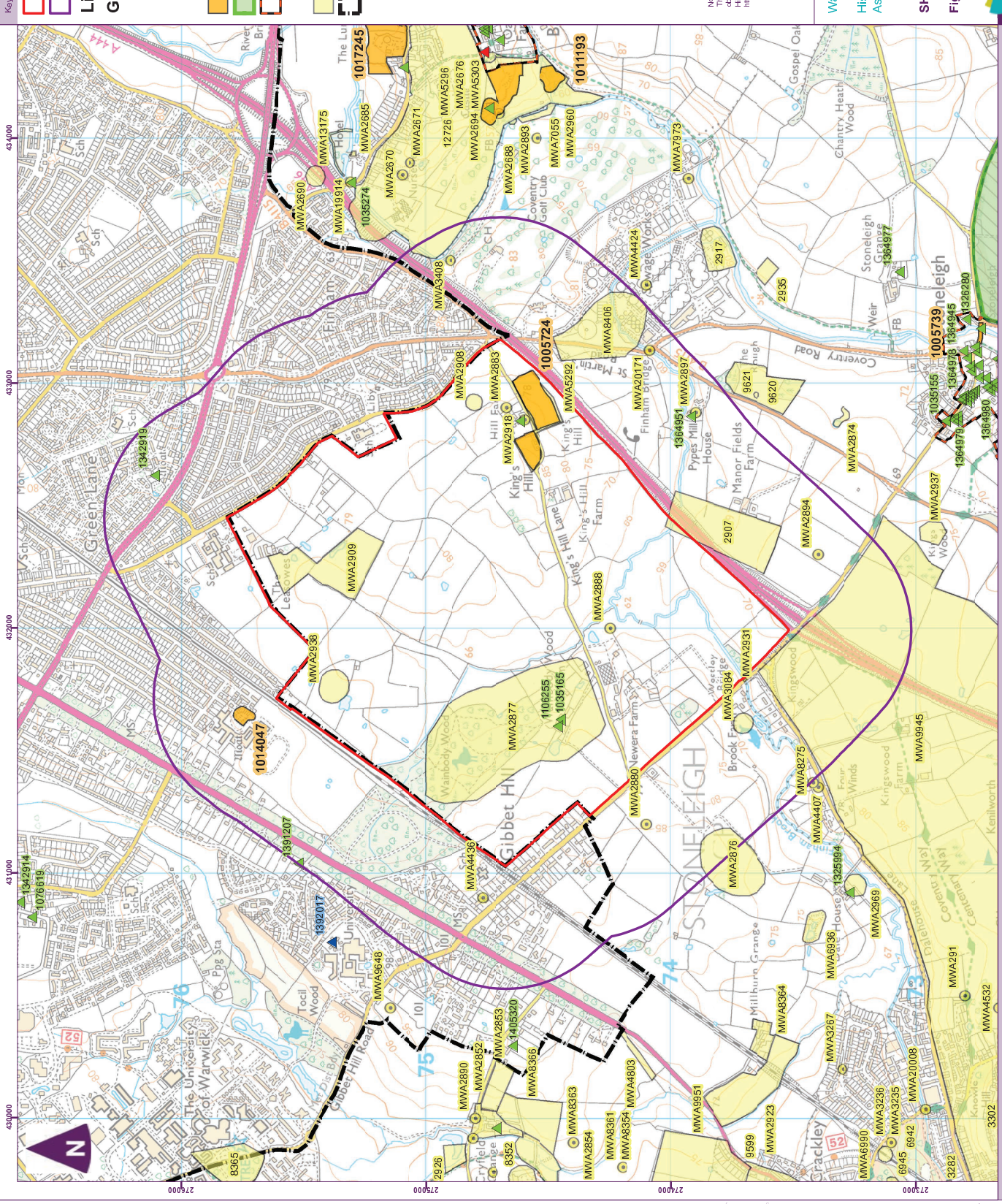
Scale at A3: 1:10,000
 0 50 100 200 300 400
 Metres



Historic Environment
 Assessment

SHLAA sites and Heritage Assets

Figure 2: Site C13



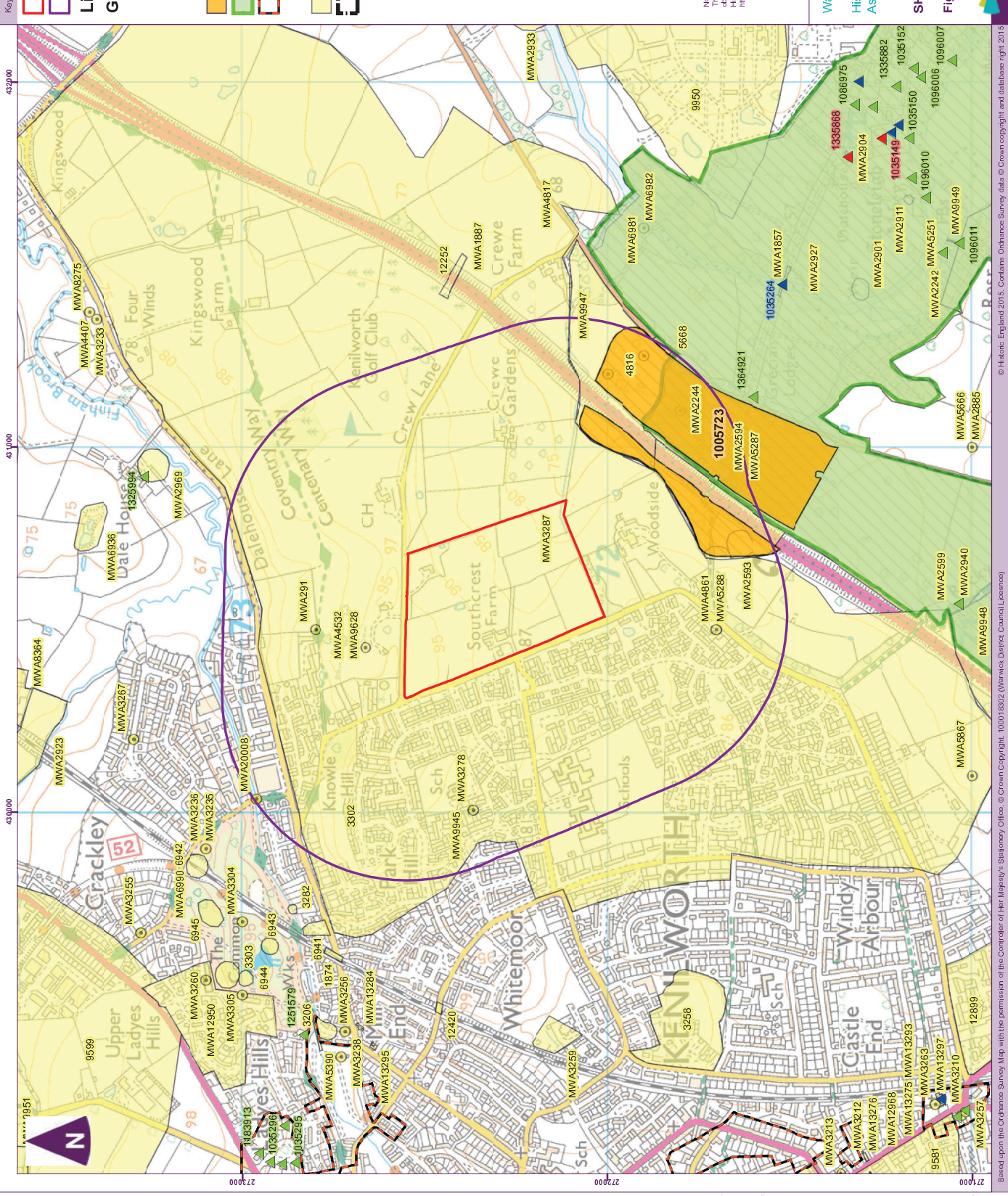
- Key**
- SHLAA Site Boundary
 - Initial 500m search area
 - Listed Buildings**
 - Grade**
 - Listed building - Grade I
 - Listed building - Grade II*
 - Listed building - Grade II
 - Scheduled monument
 - Registered park or garden
 - Conservation Area
 - Warwickshire HER Monument
 - Warwickshire HER Monument
 - District Boundary

Note:
 The Historic England GIS Data combined in this metadata was
 the Historic England GIS Data as of 15/02/2015.
 Historic England GIS Data can be obtained from
<http://www.historicengland.org.uk>.

Scale at A3: 1:15,000
 0 50 100 200 300 400 Metres

Warwick District Council SHLAA
 Historic Environment
 Assessment
 amec
 foster
 wheeler

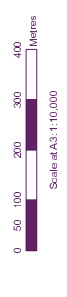
SHLAA sites and Heritage Assets
 Figure 3 : Site C06



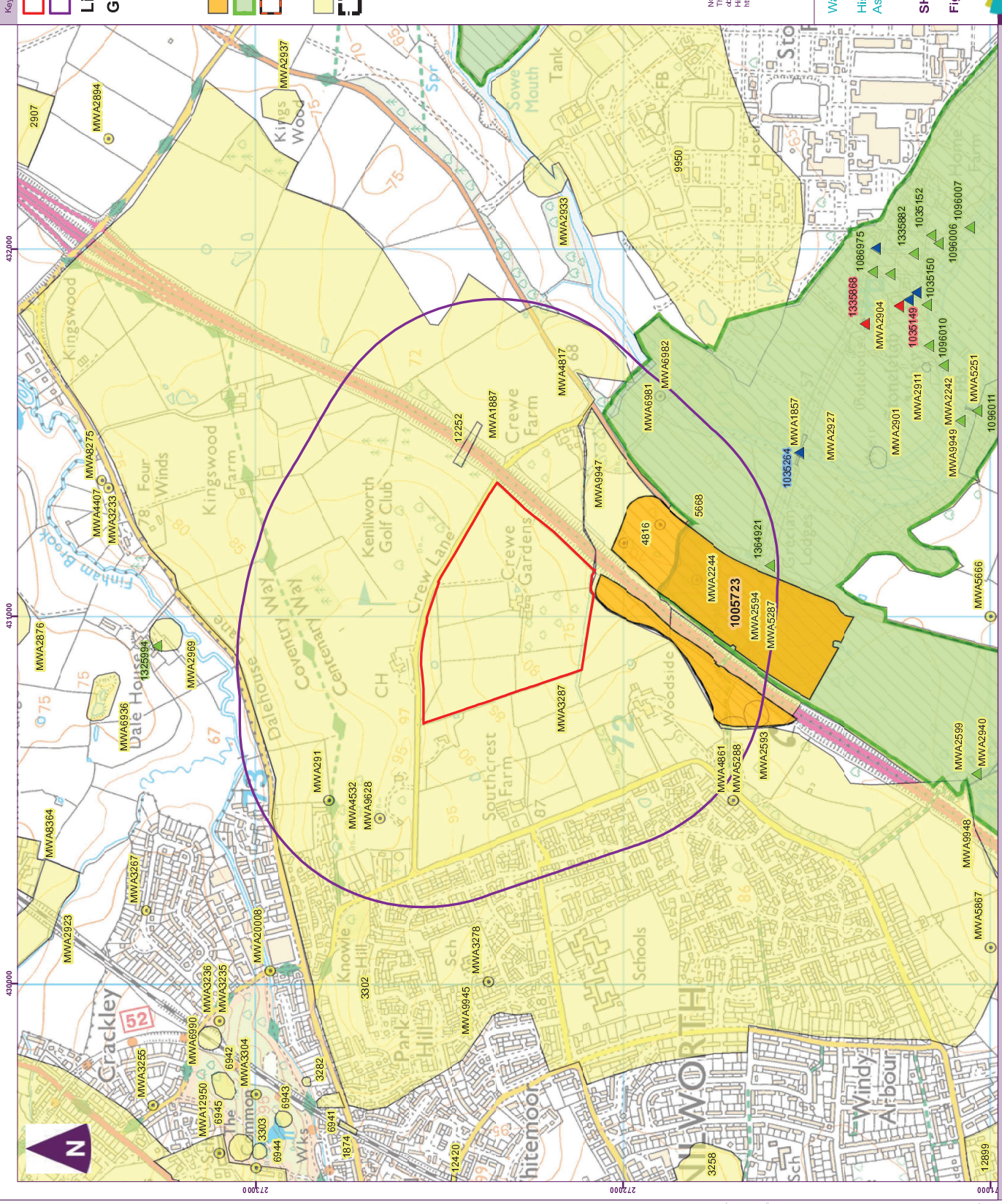
Key

- SHLAA Site Boundary
- Initial 500m search area
- Listed Buildings**
- Grade**
- Listed building - Grade I
- Listed building - Grade II*
- Listed building - Grade II
- Scheduled monument
- Registered park or garden
- Conservation Area
- Warwickshire HER Monument
- Warwickshire HER Monument
- District Boundary

Note:
 The Historic England GIS Data combined in this metadata was
 downloaded on 15/02/2015. The data is available up to date
 Historic England GIS Data can be obtained from
<http://www.historicengland.org.uk>.

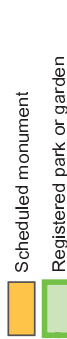
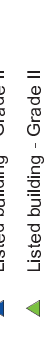


SHLAA sites and Heritage Assets
 Figure 4: Site K17



- Key**
- SHLAA Site Boundary
 - Initial 500m search area
 - Listed Buildings
 - Grade
 - Listed building - Grade I
 - Listed building - Grade II*
 - Listed building - Grade II
 - Scheduled monument
 - Registered park or garden
 - Conservation Area
 - Warwickshire HER Monument
 - Warwickshire HER Monument District Boundary

Note:
 Historic England GIS Data combined in this dataset was
 as of 15/02/2015.
 Historic England GIS Data can be obtained from
<http://www.historicengland.org.uk>.



SHLAA sites and Heritage Assets

Figure 5: Site K18