

Key

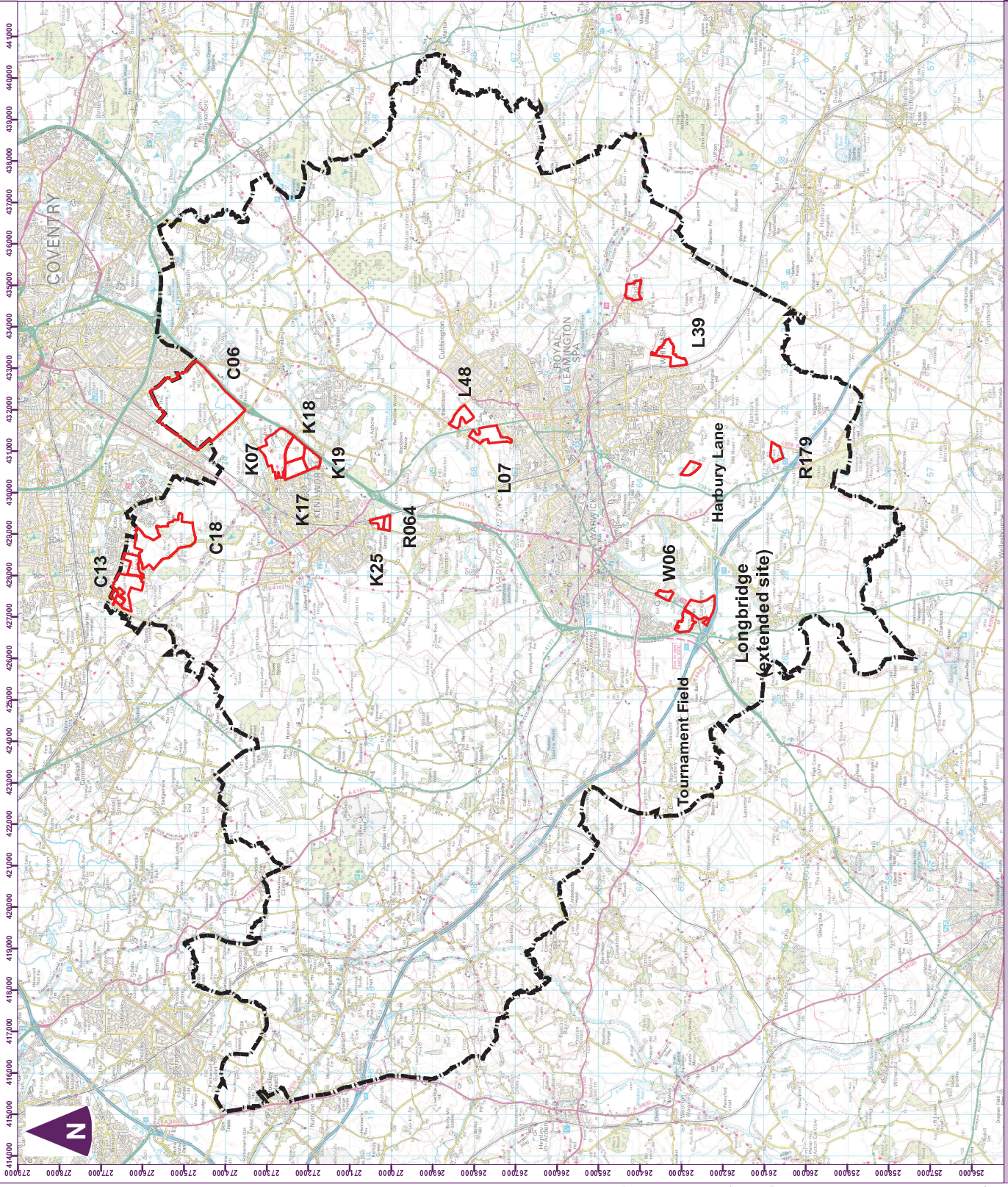
SHLAA Site Boundary  
District Boundary

Note:  
The Historic Environment GIS Data contained in this material was  
last updated on 15/02/2015.  
Historic Environment GIS Data can be obtained from  
<http://www.historicengland.org.uk>.

000000  
1:100000  
Scale at A3: 1:66,102



Figure 1 SHLAA sites assessed



Based upon the Ordnance Survey Map with the permission of the Controller of Her Majesty's Stationery Office. © Crown Copyright. 100015302 (Warwick District Council Licence)  
© Historic England 2015. Contains Ordnance Survey data © Crown copyright and database right 2015

File: H:\Projects\13799\Warwick Local Plan Historic Environment\Drawings\GIS\Plans\13799\SHLAA\13799 SHLAA sites overview.mxd  
Doc: 6136920115\_0212\_314as\_overview.mxd GLYDM