



June 2013

Revised Development Strategy

LOCALPLAN

helping shape the district

This leaflet provides a summary of the Revised Development Strategy for the Local Plan.

It sets out how much new development (land for housing and employment) is needed over the next 15 years and where this development should take place. It also provides some information about the infrastructure (roads, schools, open spaces, etc) needed to support new development.

Full details – including the justification for these proposals – are available in the Revised Development Strategy which is available on the Council's website at www.warwickdc.gov.uk/newlocalplan.

The proposals

The Revised Development Strategy includes:

- Site allocations for 6,630 new dwellings over the next 15 years.
- Proposals for a hierarchy of rural settlements to help shape sustainable development in villages.
- 22.5 hectares of new employment land to meet local needs over the next 15 years.
- Proposals for a major sub-regional employment site in the north east of the District.
- Proposals for new infrastructure to support the new development

Comments and feedback

For further information on the Revised Development Strategy, or if you have any comments, please visit our website at: www.warwickdc.gov.uk/newlocalplan

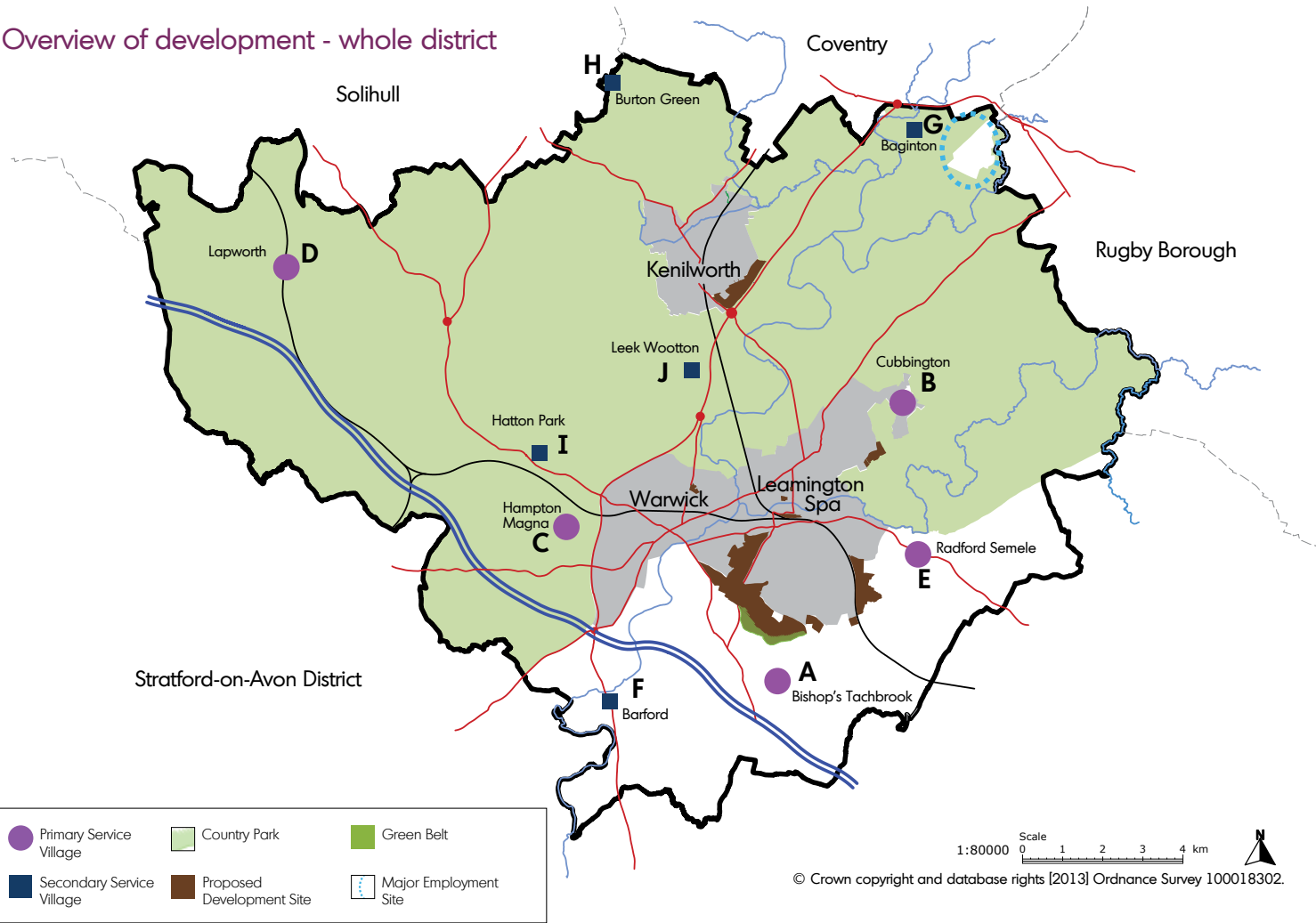
or write to: Development Policy Manager, Development Services, Warwick District Council, Riverside House, Milverton Hill, Leamington Spa, CV32 5QH

or email: newlocalplan@warwickdc.gov.uk

We need to receive your comments by Monday 29 July 2013



Overview of development - whole district

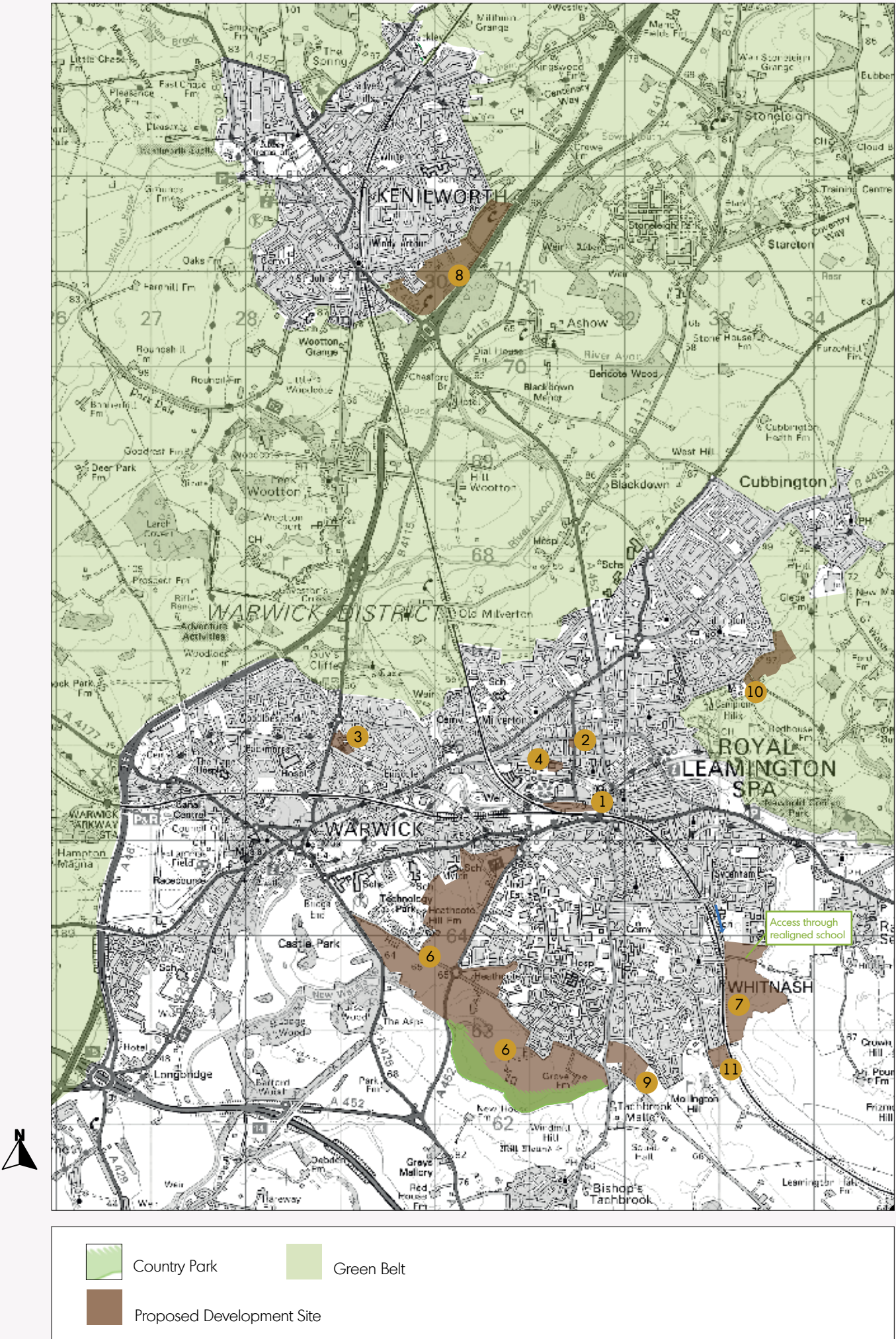


Village Allocations			
Primary Service Villages			
Ref No	Site	No. of Dwellings	Plan Phase
A	Bishop's Tachbrook	100 - 150	1,2,3
B	Cubbington	100 - 150	1,2,3
C	Hampton Magna	100 - 150	1,2,3
D	Kingswood (Lapworth)	100 - 150	1,2,3
E	Radford Semele	100 - 150	1,2,3
Total		C 600	
Secondary Service Villages			
F	Barford	70 - 90	1,2,3
G	Baginton	70 - 90	1,2,3
H	Burton Green	70 - 90	1,2,3
I	Hatton Park	70 - 90	1,2,3
J	Leek Wootton	70 - 90	1,2,3
Total		C 400	

Revised Development Strategy : Proposed Site Allocations				
Ref No	Site	No. of Dwellings	Plan Phase	Uses (see key below)
Urban Brownfield Sites				
1	Station Approach	220	1	Ho/OS
2	Leamington Fire Station	60	2	Ho/OS
3	Former Ridgeway School	50	1	Ho/OS
4	Riverside House	50	1	Ho/OS
Other Brownfield Sites				
Part of 6	Former Severn Trent Sewage Works (south of Harbury Lane)	225	3	Ho/OS
Strategic Urban Extension Sites on Greenfield Land				
6	South Sites (area south of Warwick and Whitnash)	3195	1,2,3	Ho/Emp/OS/Com
7	East of Whitnash	500	1,2,3	Ho/OS/Com
8	East of Kenilworth (Thickthorn)	700	1,2,3	Ho/Emp/OS/Com
Other Sites on Greenfield Land				
9	Woodside Farm	280	1	Ho/OS
10	Red House Farm	250	1	Ho/OS
11	Fieldgate Lane	100	1	Ho/OS

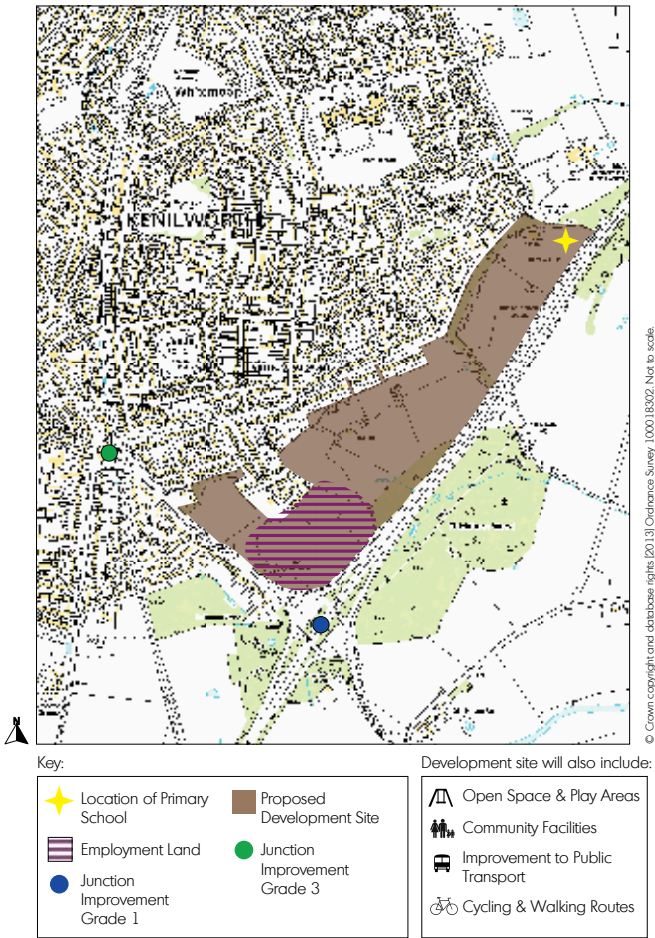
Uses Key: Ho: Housing OS: Open Space Emp: Employment Com: Community Facilities

Development sites on the edge of the urban area

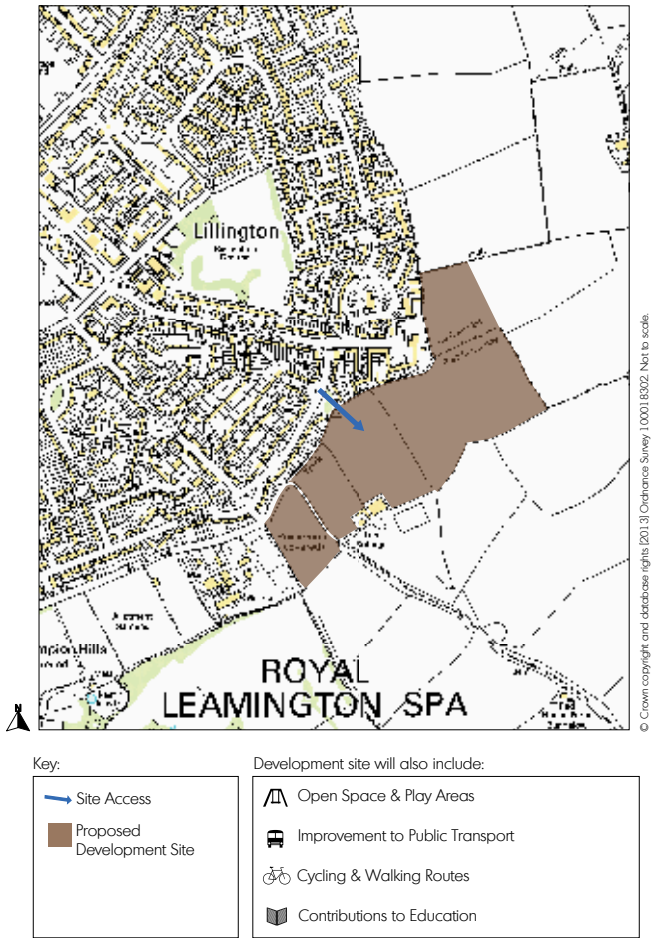


Proposals for Strategic Sites

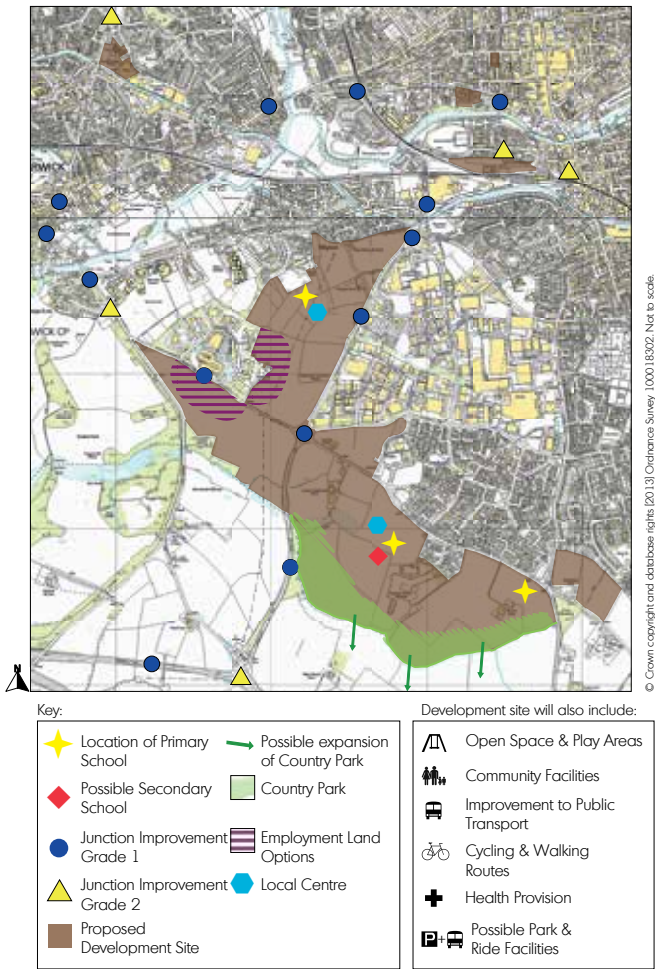
Thickthorn



Red House Farm



Southern Site: South of Warwick and Whitnash



Whitnash and Sydenham

