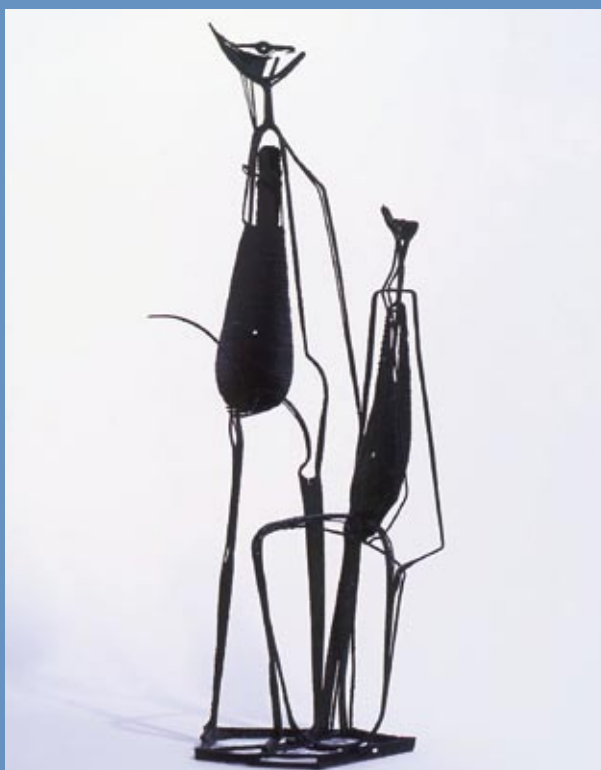




LEAMINGTON SPA
Art Gallery & Museum

Exhibitions & Events

January–March 2009



Girl and Boy © Reg Butler, 1951.
Arts Council Collection

www.warwickdc.gov.uk/royalpumprooms

ART GALLERY & MUSEUM EXHIBITIONS

GEOMETRY OF FEAR 16 January – 15 March

ARTS COUNCIL COLLECTION AT
**SOUTHBANK
CENTRE**

Bringing together sculptures and works on paper from the Arts Council Collection, *Geometry of Fear* explores the generation of sculptors that emerged in the post-war years and created work in direct response to the horrors of the Holocaust, World War II and the climate of fear generated by the Cold War. The spiky, twisted forms were described at the time by art historian Herbert Read as belonging 'to the iconography of despair, or of defiance'.

This exhibition, one of the Arts Council's Spotlight series, includes key works of the period, such as Reg Butler's *Girl and Boy* (1951), Eduardo Paolozzi's *The Cage* (1951) and Kenneth Armitage's *Figure Lying on its Side* (1957), as well as works by Henry Moore and Graham Sutherland.



Insects' Wings © Eduardo Paolozzi, (1951).
Arts Council Collection

ART GALLERY & MUSEUM EVENTS

COLLECTION CONNECTION

Leamington Spa Art Gallery & Museum is asking local personalities to contribute to its *Collection Connection* programme by choosing their favourite exhibit. Every month the chosen exhibit will be highlighted with a caption that will explain who selected it and why. The chosen exhibit will also be featured in our *Friday Focus* programme of talks.

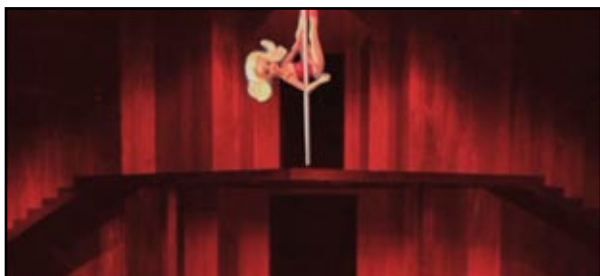
THURSDAY FLICKERS

Thursdays, 6.30 – 7.30pm

Thursday Flickers is a great opportunity to see some unique short films made by local film makers. Screenings will include work from video artists, short-film makers, animators, motion-graphic designers and artists using video installations. Please ask at the art gallery reception desk or visit www.warwickdc.gov.uk/royalpumprooms for a current programme of screenings.

FREE, no need to book

If you would like to show your work at one of our *Thursday Flickers* screenings, please contact Tammy Woodrow on 01926 742700 or email tammy.woodrow@warwickdc.gov.uk



Film still from *Pretty Unreachable* © Carla Wright

ART GALLERY & MUSEUM EVENTS

FRIDAY FOCUS Fridays at 1pm

Learn something new in your lunch break! *Friday Focus* lunchtime talks cover a wide range of topics relating to the Art Gallery & Museum's collections and the Royal Pump Rooms.

Come and discover some of the fascinating facts and stories behind our exhibits. The talks are informal and last about 10 minutes. Please ask at the art gallery reception desk or visit www.warwickdc.gov.uk/royalpumprooms for a current programme of talks.



FREE, no need to book

ART CART FAMILY FUN



Last Saturday of each month, 1 – 3pm



Join us for family art sessions in the galleries using our mobile Art Cart. Take part in a different activity every month.

FREE, drop in and join in. Suitable for children up to 12 years. Children must be accompanied by an adult

ART GALLERY & MUSEUM EVENTS

GEOMETRY OF FEAR – LUNCHTIME TALK

Friday 30 January, 1 – 1.30pm

Ann Jones, Exhibition Curator, Arts Council Collection, will host a tour of the *Geometry of Fear* exhibition.

This 30 minute event is part of our regular *Friday Focus* programme.

FREE, no need to book

SCULPTURAL FORMS WITH METAL

Saturday 7 February, 10.30am – 4.30pm

Take inspiration from the *Geometry of Fear* exhibition and explore a range of sculptural processes in this workshop for adults. With guidance from a professional metal sculptor, participants will design and make

their own sculptures using metal and wire.

£20 per person
Advance booking only, places are limited
Please call 01926 742700



Scaffolding © John Berger, Festival of Britain (1950). Arts Council Collection

ART GALLERY & MUSEUM EVENTS

HALF TERM ART CLUB



Thursday 19 February, 2 – 4pm

Create striking sculptures inspired by the *Geometry of Fear* exhibition.

FREE, drop in and join in

Sessions last 20 minutes, final entry 3.40pm

Suitable for ages 6–12 years

Children must be accompanied by an adult



GEOMETRY OF FEAR – POETRY READING

Thursday 26 February, 6 – 7pm

British poet Kelvin Corcoran will read poetry inspired by sculptures in the *Geometry of Fear* exhibition from his recently published book, *What Hit Them*.

£3 per person (Free entry to FLAG members and students)

Advance booking only, places are limited

Please call 01926 742700

ART GALLERY & MUSEUM EVENTS

ANIMATE!

Saturday 28 February, 11am – 4pm

Saturday 7 March, 11am – 4pm

Saturday 14 March, 11am – 4pm

Join our animation club! Work with a professional film maker to create your own short animations which will be screened as part of our *Thursday Flickers* programme. These workshops will give participants the opportunity to develop animation skills over a three week period. Participants are advised to bring a packed lunch.

Suitable for ages 12–16 years

£15 per person, for three workshops

Advance booking only, places are limited

Please call 01926 742700



Image courtesy of Trevor Woolery

ADDITIONAL INFORMATION

SCHOOLS RESOURCES

We offer free school visits and resources on a number of curriculum topics including art, history, numeracy and literacy for Key Stages 1 and 2. Follow a trail around the gallery, or use our free activity boxes which cover World War II, Ancient Egypt and the Victorians.



Don't miss our exciting online resources including online collections accessible from www.lsagmcollections.org.uk and two educational websites, *A Walk Around Victorian Leamington Spa* and *Toys and Games*, which are available within the Spotlights section of the Windows on Warwickshire website, www.windowsonwarwickshire.org.uk



For more information or to book a visit please telephone Roz Crampton on 01926 742700