

Leamington Spa

Sewer Improvements: Phase 1

We are investing £7.6m in Leamington Town Centre to upgrade over 2.2km of the existing sewerage network to increase the capacity of the sewer system and reduce the risk of flooding to over 50 properties in the town. In addition the sewer relief system will be upgraded to reduce pollution of the River Leam.

Work will start in September 2010 and our aim is to complete all work by Spring 2012.

The plan shows the extent of the work to be completed in Phase 1.



Why we need to do this work

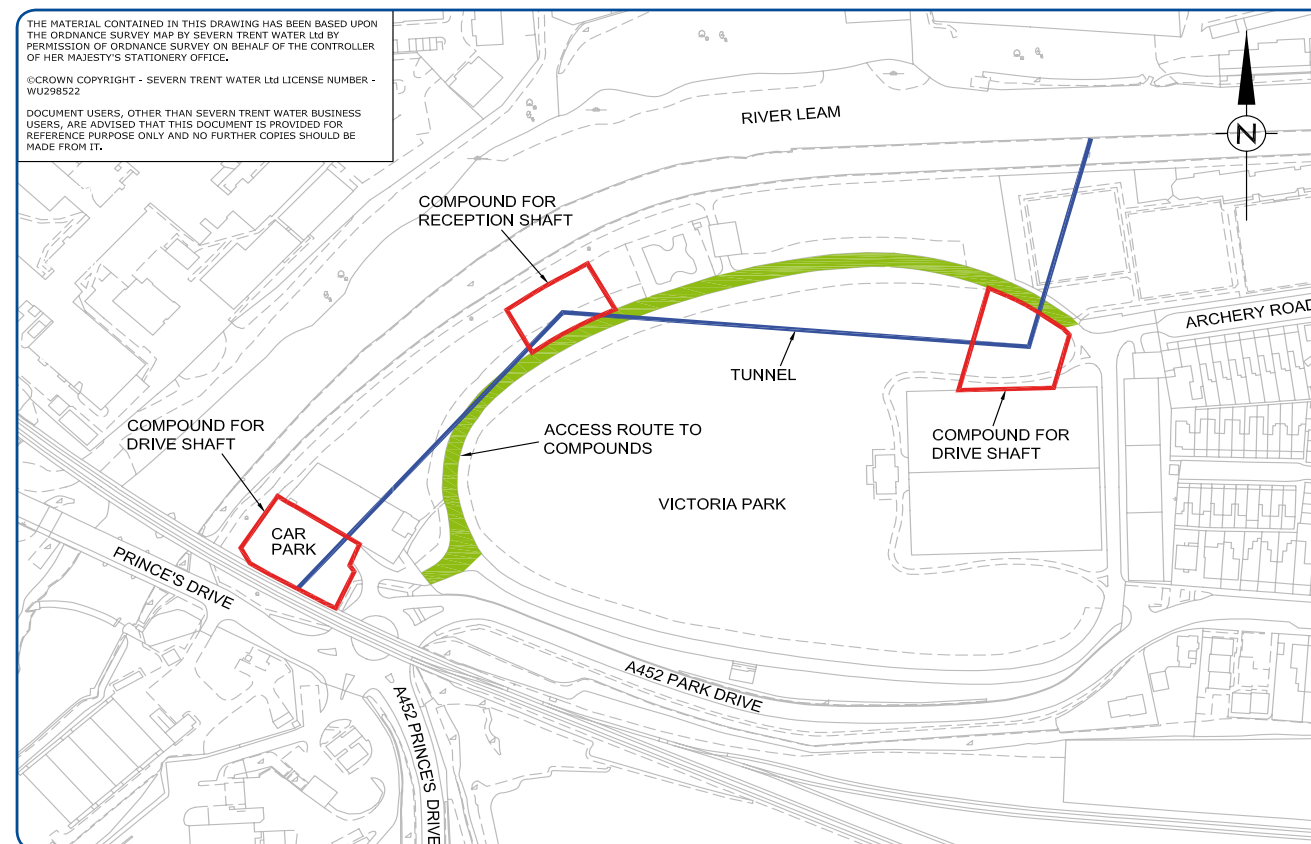
Many of the sewers in Leamington Town Centre date back to Victorian times, and are no longer capable of meeting the demands of today's urban society. To provide the increased capacity we now require, and to ensure our sewers can be relied upon for many years to come, we need to replace these existing sewers with larger and more robust systems to reduce the risk of flooding from the towns sewers.

An essential part of the new system is to be constructed through Victoria Park, which we recognise is a busy and popular amenity. This element of the project has been planned to take place when the main activities in the park have been completed. This will minimise the inconvenience to users of Victoria Park.

Planned work in Victoria Park

The work to be constructed in Victoria Park involves installation of a deep storm relief sewer which carries excess flows from the drainage system in Leamington Town Centre to a new Storm Pumping Station in Princes Drive.

The sewer will be constructed as a tunnel beneath Victoria Park, from Princes Drive Pumping Station to a shaft in Riverside, north of the river. Two other shafts needed for the tunnelling operation will be located in Victoria Park, as shown in the drawing below:



When will we be doing this work

Construction of the two shafts will begin in October 2010 and will be completed by March 2011. The work will be confined to two working compounds which will be securely fenced before work begins and maintained until the works are complete and the areas reinstated. However traffic to and from these

compounds will be using the existing roads within the park, via the main entrance at Princes Drive/ Park Drive roundabout. Traffic will be managed to ensure the safety of park users.



Severn Trent Water and NMCNomenca apologise for any inconvenience these essential works may cause.

We promise to carry out our sewer construction in Victoria Park as efficiently as possible, to ensure that the impact of these works is kept to an absolute minimum.

Contacts

If you have any enquiries relating to these works, please contact members of our project team who will provide as much information as possible.

Geoff Hancock
NMCNomenca
Contracts Manager
07794 031967

Mark Lasance
NMCNomenca
Project Manager
07970 136547

Chris Keys
Severn Trent Water
Programme Engineer
01332 683068