

WARWICK CDRP

PARTNERSHIP STRATEGIC
ASSESSMENT
FOR 2008/2009

CONTENTS

Section 1	INTRODUCTION including Aim, Purpose, Methodology and Data Sources	Page 7-10
Section 2	THE ANALYSIS including Contextual Information, the Scanning Exercise	Page 11-41
Section 3	THE PRIORITY SELECTION PROCESS	Page 42-55
Section 4	CURRENT ACTIVITY AND PROVISION including Local Experiences and Impact	Page 56-59
Section 5	CONCLUSION AND NEXT STEPS	Page 60

SECTION 1 INTRODUCTION

The business of the Partnership is to allocate resources to tackle the determined priorities in the most effective way. The first, and most crucial task therefore, is the need for the Partnership to have analysed all of the information available to enable informed decisions to be made as to what the priorities are. The **aim** of this Strategic Assessment is to identify and explore the current and future gaps and risks that affect the Partnership and the communities it serves in terms of crime, anti-social behaviour, substance misuse and behaviour adversely affecting the environment. The recent introduction of this requirement clearly intends to move partnerships to a more intelligence-led business planning approach founded on sound evidence and robust analysis.

The nature, extent and causes of local community safety concerns and problems can be better understood by:-

- working with a wider range of datasets and intelligence than before
- developing sources of community intelligence, and
- interpreting what this means

The assessment's **purpose** is very clear. This work must drive forward the process of:-

- agreeing priorities; and
- identifying meaningful outcomes

This, in turn, will help the Partnership to:-

- plan activity
- allocate resources
- deliver activities that focus on priorities
- achieve results

METHODOLOGY

The approach used to produce this assessment has included:-

- Clearly setting out what data has actually been used
- The timeframe for collecting and comparing data
- How the analysis was undertaken
- Details on any specific data issues
- The community engagement approach – how it informed the assessment
- Issues around analytical capacity

Data in this report has been compiled from the following partners:

- Warwickshire County Council
- Warwickshire Fire & Rescue
- Warwickshire Police
- Warwickshire Probation
- Warwickshire Youth Offending Service
- West Midlands Ambulance Service
- Primary Care Trust

DATA SOURCES

This Section of the report sets out what data and information was available to inform the Strategic Assessment. This includes details on which agencies provided data, time-frames, reliability and validity and problems in the analysis such as:-

- Gaps in information
- Accuracy in data collection and recording
- Non-comparable data sets
- Data only collected recently
- Changes in recording practices
- Data sharing and data protection protocols

SECTION 2 THE ANALYSIS

CONTEXTUAL INFORMATION

Warwick District is acknowledged as a beautiful place to live, work and visit. With its attractive countryside, excellent location, good communication links and rich heritage, the area has long been a focus for new development. Lying within the heart of Warwickshire it covers an area of 28,226 hectares. Approximately 81% of the district's rural area lies within the West Midlands Green Belt. The district benefits from good communication links with road and rail access both to the West Midlands and to London. However, the speed of access into the area from some neighbouring areas does bring cross border travelling criminals at increasing levels.

The district's character, and much of its appeal, comes from a wealth of historic buildings and areas. The district contains 29 conservation areas and approximately 1500 listed buildings. Some of the most notable include, Warwick and Kenilworth castles, Stoneleigh Abbey and the two National Trust Country Houses at Packwood and Baddesley Clinton.

For all of these reasons, Warwick District has become a desirable place to live and work. The area has seen sustained growth with more than 15,000 new homes built in the period 1976 to 2001. This has helped the district meet the challenges of a changing economy, with growth in the service sector and a rise of white collar jobs to make up for the steep decline in manufacturing (many of these jobs having been tied to the changing fortunes of the motor trade). Today, unemployment is low (1.6%, 2007), however, this figure masks local pockets of deprivation where unemployment is much higher.

Growth in Warwick District in recent years has been primarily focussed on its four towns. Major development (employment) has taken place in areas such as Tachbrook Park, Warwick Gates, South Sydenham and South West Warwick.

Warwick District, together with Stratford-upon-Avon, has the highest household income levels in the county (£35,000). Warwick District is relatively affluent overall, but in some parts of Leamington Spa there are pockets of deprivation. The district has to sustain the business vibrancy of Leamington Spa, Warwick and Kenilworth town centres. It also has to sustain its tourism heritage. Despite the variety of quality tourist attractions, the area tends not to be a base for visitors, but rather a

stopping-off point for regional, national and international visitors to the area and Stratford-upon-Avon.

Clearly, the number of visitors, cars, tourists and coaches of money-laden age groups tend to offer more opportunities for those inclined to acquisitive crime especially.

About 90% of the district is accounted for by non-urban land and rural communities. Only 20% of the District's population live in these areas. The majority of this rural area is rich in historical monuments and used for agricultural use. Both the University of Warwick and Coventry Airport lies just within the District. The District has an abundance of green spaces and the natural environment. There are sites of Special Scientific Interest, Ancient Woodlands, Local Nature Reserves, parks and open spaces.

Levels of deprivation in this District are very low with the area ranking 250 out of 354 nationally. However, housing deprivation is among some of the highest which has implications for crime. Overall levels of crime in Warwick with the district ranking of 232 out of 354. There had been a steady decrease in the crime figures over the period 2000 to 2005.

This Section thus far has highlighted a number of important issues around the changing social and economic environs across Warwick District. Added to this are the equally significant political considerations. Despite the Home Office decision to ratify the merger of Warwick and Stratford CDRPs into a South Warwickshire Partnership, the uncertainty exists as to what would happen if performance improved enough for merger approval. The re-organisation of Warwickshire Police into a single Command Unit does not sit as easily within a merged Partnership. Another level of uncertainty revolves around the view of elected members as to the potential attractiveness of pursuing a merger.

Secondly, and to add to the potential uncertainty, is the current feasibility study between Stratford and Warwick District Councils around possible delivery of joint services, including the community safety function.

WARWICK DISTRICT

Priorities – BCS priorities and targets 2005 - 2008

- Vehicle Crime
 - Theft of Vehicle
 - Theft From Vehicle
 - Vehicle Interference
- Domestic Burglary
- Theft of Pedal Cycle
- Theft From Person
- Criminal Damage
- Violent Crime
- Robbery – Personal Property
- Anti-Social Behaviour
- Fear of Crime
- Substance Misuse (Drugs & Alcohol)

Warwick CDRP Priorities – for the final year of this strategy the Strategic Member Board agreed the following as priority crime types:

- Business crime (continuing)
- Theft from vehicle
- Criminal Damage
- Serious Violent Crime
- Domestic Burglary

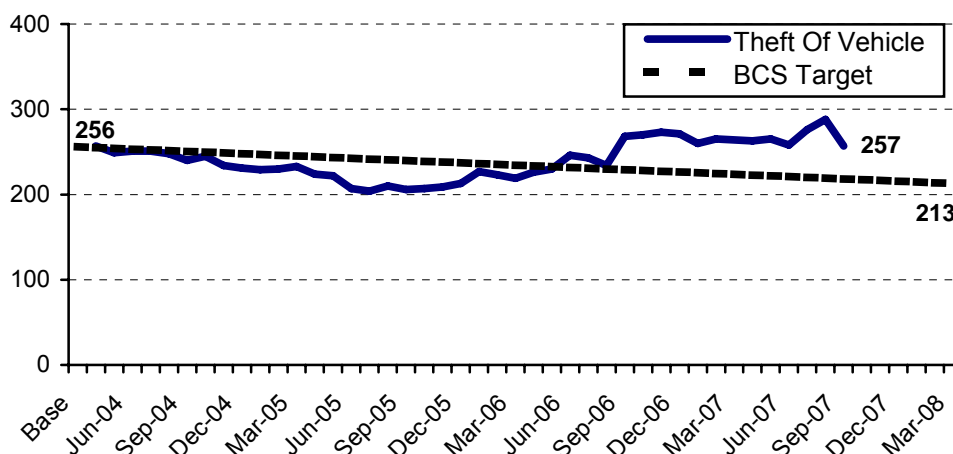
VEHICLE CRIME

THEFT OF VEHICLE

In the period October '06 and September '07, the level of recorded Theft Of Vehicle offences in Warwick remained below the target line until the summer of 2006. Having risen above the target line in June, the level of offences remained constant until the present day.

In Warwick there were 1.9 offences per 1000 population in 2006/07 and this is 19% higher than the corresponding figure for the previous year.

The 2007/08 BCS target for Theft Of Vehicle offences is 213, with an LPSA2 target of 201. Figures for 2006/07 suggest that Warwick needs to reduce their number of recorded theft of vehicle by 19% in the coming months in order to meet the 2007/08 BCS target.



Year	Theft Of Vehicle Offences	Rate per 1000 Population	Change on previous year
2003/04 Baseline	256	1.8	-
Apr '04 – Mar '05	233	1.7	-23
Apr '05 – Mar '06	219	1.6	-14
Apr '06 – Mar '07	264	1.9	+ 45
Apr '07 – Sep '07	129	1.8*	-6*

*Projected values based on Apr – Sep '07 data

The below table shows the top 5 wards for Theft Of Vehicle offences for the period October 2006 and September 2007.

Ward	Theft Of Vehicle Offences (Oct'06-Sep'07)	Average per Month
Brunswick	38	3
Clarendon*	38	3
Milverton*	25	2
Willes	21	2
Warwick West	20	2

*Combined Town and Non-Town Wards

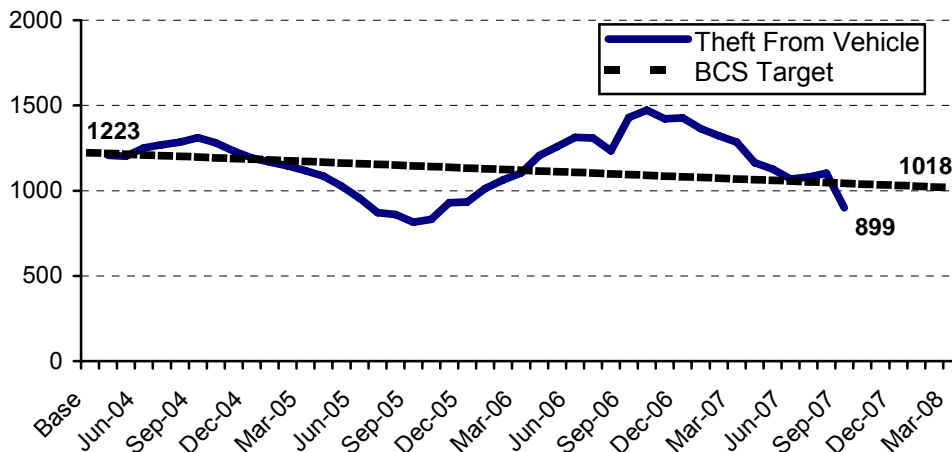
Between October '06 and September '07 the Brunswick and the Clarendon wards in the Warwick district were hit with the highest number of theft of vehicle offences (8% respectively).

THEFT FROM VEHICLE

Over the examined three year period, levels of Theft From Vehicle offences have fluctuated in Warwickshire, reaching low levels in 2007.

Offences fell by 9% in 2004/05, and by a further 1% in 2005/06 against the baseline of 1223. These then increased by 16% in 2006/07, although half-yearly figures for 2007/08 suggest a reduction of 44%.

The 2007/08 BCS target for Theft From Vehicle offences is 1018, with an LPSA2 target of 1009. Figures for 2007/8 to date show that South Warwickshire is currently coming in well under both targets.



Year	Theft From Vehicle Offences	Rate per 1000 Population	Change on previous year
2003/04 Baseline	1223	8.7	-
Apr '04 - Mar '05	1117	7.9	-106
Apr '05 - Mar '06	1105	7.9	-12
Apr '06 - Mar '07	1285	9.2	+180
Apr '07 - Sep '07	363	5.2*	-559*

*Projected values based on Apr – Sep '07 data

A report was produced in April 2007 that provided an evaluation of the Operations/Interventions that have been put into place in South Warwickshire since November 2006 to tackle vehicle crime. The report highlighted a correlation between the number of Operations/Interventions in place and a decrease in vehicle crime offences in the Warwick district.

The highest number of operations/interventions (6) were in place in November 2006. This relates to the time when the criminal damage action plan was implemented in the Warwick District.

We would not expect to see a reduction immediately but analysis has shown a clear decline from November through to March which could be attributed to the operations/interventions in place to tackle vehicle crime.

The below table shows the top 5 wards for Theft From Vehicle offences for the period October 2006 and September 2007.

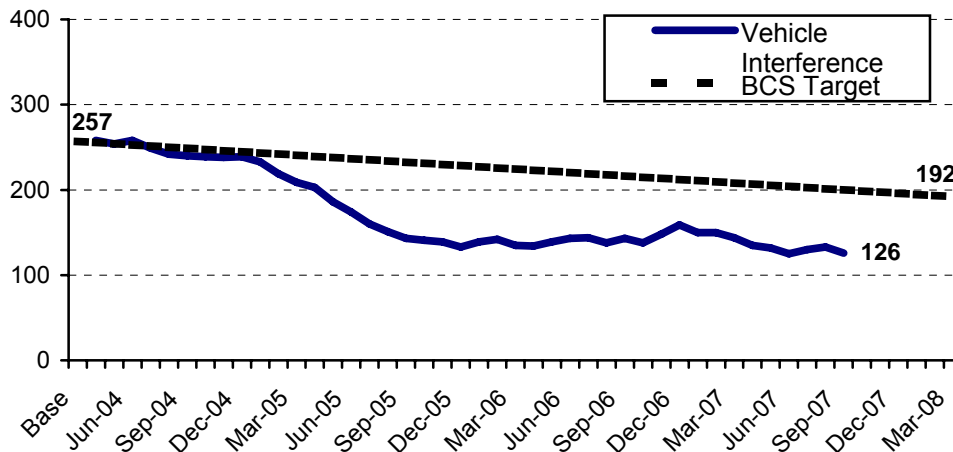
Ward	Theft From Vehicle Offences (Oct'06-Sep'07)	Average per Month
Warwick West	108	9
Warwick South	96	8
Willes	93	8
Milverton*	91	8
Clarendon*	77	6

*Combined Town and Non-Town Wards

VEHICLE INTERFERENCE

Vehicle Interference in Warwick has performed well since the baseline year of 2003/04. A reduction of 19% was achieved in 2004/05, followed by a further drop of 35% in 2005/06. This increased marginally in 2006/07 and statistics for the current year suggest that this will drop once by an estimated 36%

The 2007/08 BCS target for Vehicle Interference offences is 192 and Warwick are currently performing well under target.



Year	Vehicle Interference Offences	Rate per 1000 Population	Change on previous year
2003/04 Baseline	257	1.8	
Apr '04 – Mar '05	209	1.5	-48
Apr '05 – Mar '06	135	1.0	-74
Apr '06 – Mar '07	144	1.0	+9
Apr '07 – Sep '07	46	0.7*	-52*

*Projected values based on Apr – Sep '07 data

The below table shows the top 5 wards for Vehicle Interference offences for the period October 2006 to September 2007.

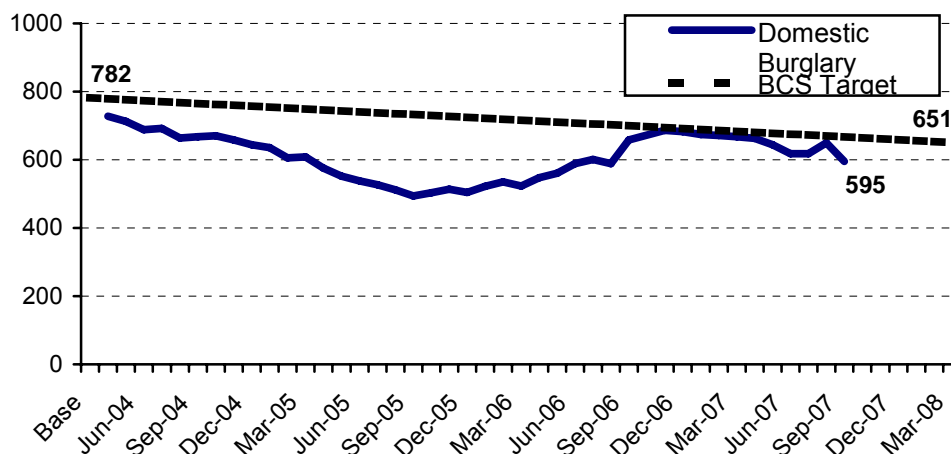
Ward	Vehicle Interference Offences (Oct'06-Sep'07)	Average per Month
Clarendon*	21	1.7
Willes	18	1.5
Warwick South	16	1.3
Milverton*	10	0.8
Bishops Tachbrook	8	0.7

*Combined Town and Non-Town Wards

DOMESTIC BURGLARY

The level of domestic burglary offences has remained below target for the whole of the examined three and a half year time period. Levels increased in 2006/07 by 28% against the previous year, although forecasts for 2007/08 suggest that this will be counter balanced by a predicted 14% drop.

The 2007/08 BCS target for Domestic Burglary offences is 651 and LPSA2 target is 619. Current figures show that Warwick is on track to meet both targets.



Year	Domestic Burglary Offences	Rate per 1000 Households	Change on previous year
2003/04 Baseline	782	13.4	-
Apr '04 – Mar '05	608	10.4	-174
Apr '05 – Mar '06	523	9.0	-85
Apr '06 – Mar '07	668	11.5	+145
Apr '07 – Sep '07	287	9.8*	-94*

*Projected values based on Apr – Sep '07 data

Recent analysis conducted on domestic burglary has identified that Gibbet Hill Road in Stoneleigh is a problem area for burglary. The burglaries are being reported at the halls of residence at the University of Warwick. Typically half of them were opportunity burglaries where windows had been left open and the majority occurred late at night. High value items have been stolen including MP3 players, purses/wallets, cameras and computers.

The below table shows the top 5 wards for Domestic Burglary offences for the period October 2006 to September 2007.

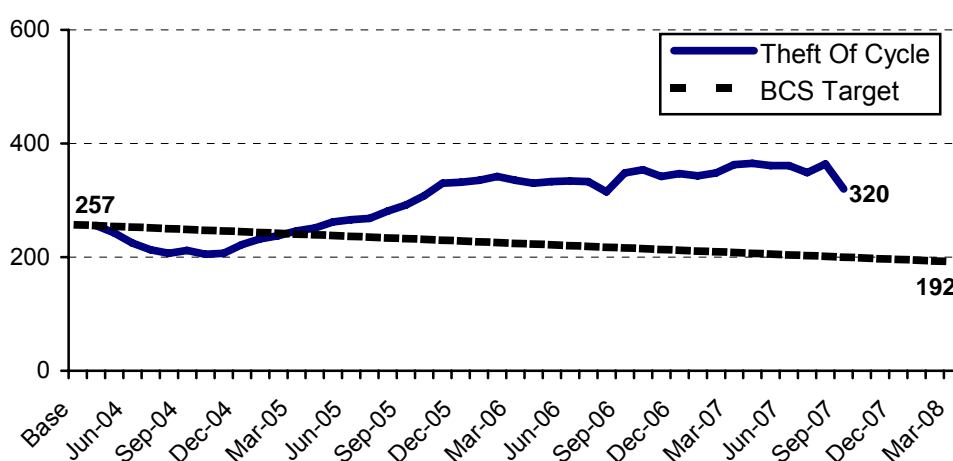
Ward	Domestic Burglary Offences (Oct'06-Sep'07)	Average per Month
Brunswick	79	6.6
Willes	55	4.5
Clarendon*	46	3.8
Crown	43	3.6
Warwick West	40	3.3

*Combined Town and Non-Town Wards

THEFT OF PEDAL CYCLE

Theft Of Pedal Cycle offences have steadily increased since early 2005. In September 2007, the level of Pedal Cycle thefts had increased by 25% when compared with the 2003/04 baseline figure.

Figures for 2006/07 suggest that Warwick need to reduce their number of recorded theft of pedal cycles by 47% in order to meet the 2007/08 BCS target.



Year	Theft Of Cycle Offences	Rate per 1000 Population	Change on previous year
2003/04 Baseline	257	1.8	-
Apr '04 – Mar '05	246	1.7	-11
Apr '05 – Mar '06	335	2.4	+89
Apr '06 – Mar '07	363	2.6	+28
Apr '07 – Sep '07	146	2.1*	-71*

*Projected values based on Apr – Sep '07 data

The below table shows the top 5 wards for Theft Of Pedal Cycle offences for the period October '06 to September '07.

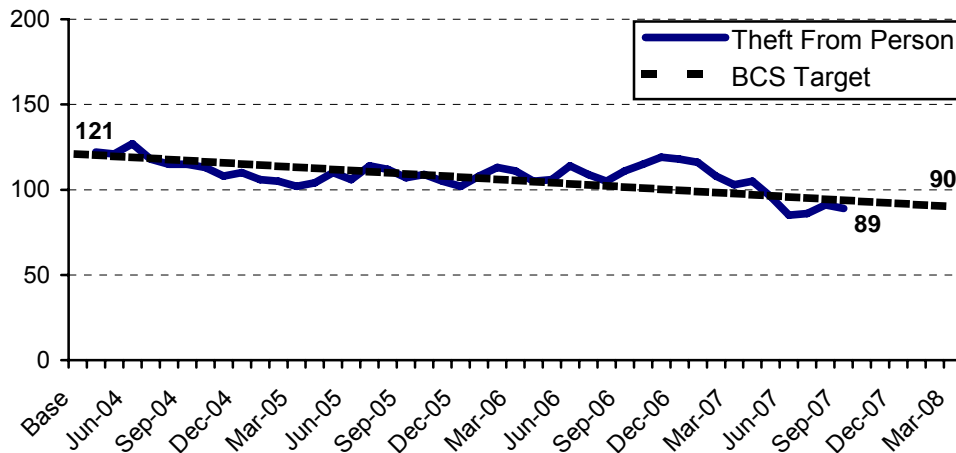
Ward	Theft Of Cycle Offences (Oct'06-Sep'07)	Average per Month
Warwick South	45	4
Clarendon*	41	3
Brunswick	40	3
Milverton*	32	3
Willes	30	3

*Combined Town and Non-Town Wards

THEFT FROM PERSON

Theft From Person offences in South Warwickshire have fluctuated over the period of October '04 to September '07 and the past 12 months has seen a decrease of 24% on October '05 to September '06 figures.

Warwick has a 2007/08 BCS target of 90 offences, which current data suggests is achievable for the CDRP



Year	Theft From Person Offences	Rate per 1000 Population	Change on previous year
2003/04 Baseline	121	0.9	-
Apr '04 – Mar '05	102	0.7	-19
Apr '05 – Mar '06	111	0.8	+9
Apr '06 – Mar '07	103	0.7	-8
Apr '07 – Sep '07	42	0.6*	-19*

*Projected values based on Apr – Sep '07 data

The below table shows the top 5 wards for Theft From Person offences for the period October '06 to September '07.

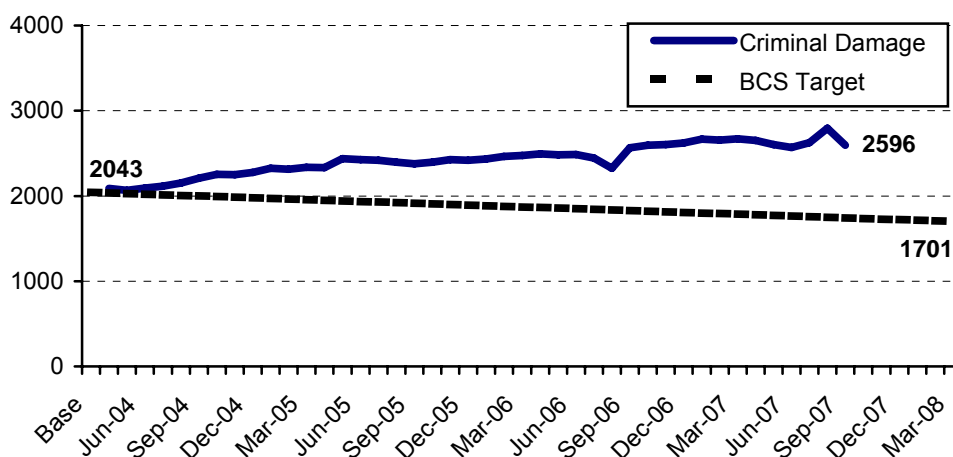
- The Clarendon ward suffered the highest proportion of offences, 21% of the total offences in South Warwickshire.

Ward	Theft From Person Offences (Oct'06-Sep'07)	Average per Month
Clarendon*	33	2.7
Milverton*	14	1.2
Warwick West	13	1.1
Abbey	6	0.5
Brunswick	6	0.5

CRIMINAL DAMAGE

In Warwick, Criminal Damage has risen consistently since the 2003/04 baseline. The level of offences in 2004/05 was a 14% increase on the previous year, which 2005/06 and 2006/07 showing 6% and 8% rises respectively.

A reduction of 36% is required on 2006/07 figures in order to achieve the 2007/08 BCS target.



Year	Criminal Damage Offences	Rate per 1000 Population	Change on previous year
2003/04 Baseline	2043	14.6	-
Apr '04 – Mar '05	2338	16.7	+295
Apr '05 – Mar '06	2474	17.6	+136
Apr '06 – Mar '07	2670	19.0	+196
Apr '07 – Sep '07	1213	17.2*	-244*

*Projected values based on Apr – Sep '07 data

- The Clarendon, Milverton and Manor wards in the Warwick district have all seen increases in criminal damage in the summer of 2007. Each of the wards are in the North Leamington Safer Neighbourhoods Area. Closer examination of the offences that have occurred in these wards suggest that they have been victim to spates of attacks occurring over the period of 24 hours. For example, on Northumberland Road in Leamington there were a total of 22 offences and all of these offences were the result of a spate of tyre slashings that occurred in an evening in August. In Beverley Road there were a further 10 tyre slashing which are linked to the damage in Northumberland Road occurring on the same evening.

- Specific analysis conducted on the Brunswick ward has identified that smashed and damaged windows on vehicles (typically windscreens) is the most common type of damage reported in the Brunswick ward (25%). Many of the offences have seen windscreens smashed by objects and by bodily force. The main problem area is on Lee Road and Westlea Road.

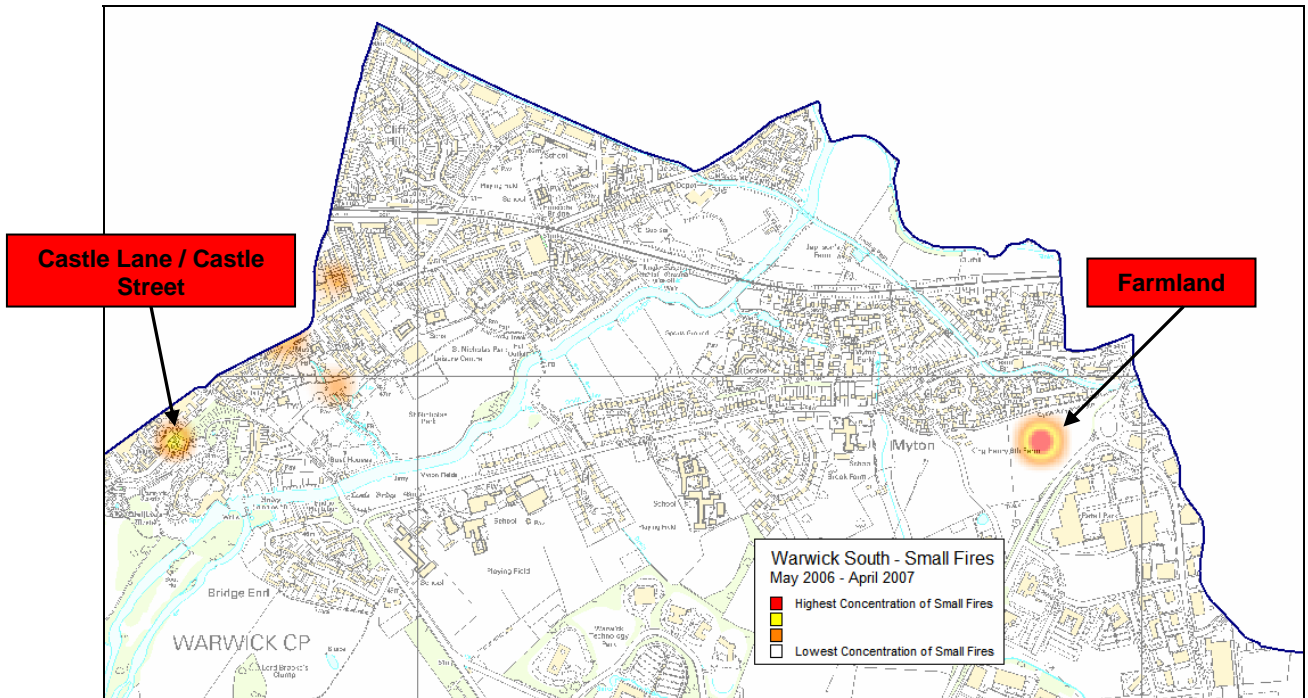
Analysis has identified that smashed and damaged windows on property is the second most common type of damage reported in the Brunswick ward (18%). Many of the offences have seen property front windows smashed deliberately with objects. The main problem areas are on Bury Road and Grove Place.

- Recent analysis of the criminal damage in the town centre has shown that the types of damage in this area are damage to business premises, typically eateries. Windows have been broken, specifically shop front windows damaged and vehicle have had their wing mirrors damaged.
- A report was produced in April 2007 that provided an evaluation of the Operations/Interventions that have been put into place in South Warwickshire since November 2006 to tackle criminal damage. The report highlighted a correlation between the number of Operations/Interventions in place and a decrease in criminal damage offences in the Warwick district.

The highest number of operations/interventions (4) were in place in January and March 2007. We would not expect to see a reduction immediately after the action plan was implemented in November but it is interesting to note that December and February both saw a slight decline in criminal damage offences in comparison to previous months.

It is possible that the peak in criminal damage offences in January (267) may be due to increased crime being reported due to the high focus on criminal damage over this period.

- Warwick South is the ward that has suffered the highest number of small fires in the Warwick district. It reported 24 fires in the selected period of May 2006 to April 2007 – 1.7% of the total small fires reported in Warwickshire. The ward suffered 8% of the total anti-social behaviour incidents and 7.5% of the total criminal damage offences reported in the Warwick district. 8% of the small fires occurred in the school summer holiday period. 23:00 is the peak time that small fires are reported with 17% occurring between the hours of 23:00 to 23:59.



The below table shows the top 5 wards for criminal damage offences for the period October '06 to September '07.

- The Clarendon ward in the Warwick district suffered the highest proportion of offences, 9% of the total offences in South Warwickshire.

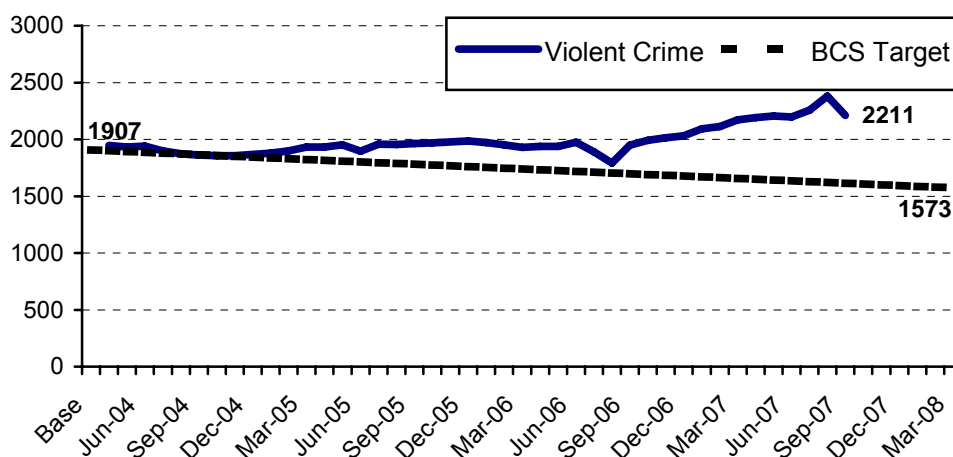
Ward	Criminal Damage Offences (Oct'06-Sep'07)	Average per Month
Clarendon*	354	30
Brunswick	315	26
Willes	238	20
Warwick West	234	20
Warwick South	191	16

*Combined Town and Non-Town Wards

VIOLENT CRIME

The Violent Crime shown below include Harassment offences, in line with the BCS target. Violent Crime figures remained relatively close to the target throughout the monitoring period, only showing a real increase from Winter 2006. Violent Crime in Warwick increased by 1% in 2004/05 when compared with the BCS baseline figure of 1907. This remained the same in 2005/06, before an increase of 12% in 2006/07. There are currently no signs of a meaningful reduction in 2007/08, with a projected decrease of 1% on 2006/07 figures.

The 2007/08 LPSA2 target for Violent Crime excluding Harassment is 1420, which Warwick is unlikely to achieve. If achieved, this would represent a 17.3% reduction on a 2003/04 LPSA2 baseline figure of 1718. A reduction of 327 offences (19%) on 2006/07 figures is required to meet this target.



Year	Violent Crime Offences	Rate per 1000 Population	Change on previous year
2003/04 Baseline	1907	13.6	-
Apr '04 – Mar '05	1931	13.8	+24
Apr '05 – Mar '06	1930	13.7	-1
Apr '06 – Mar '07	2171	15.5	+241
Apr '07 – Sep '07	1077	15.4*	-17*

*Projected values based on Apr – Sep '07 data

Focusing on the violent offences that have been recorded by Police on the Crime Information System (CIS) in the last 12 months (Oct 06 to Sep 07) the split has been as follows:

- 16% of the total violent offences recorded were linked to domestic violence.
- 38% of the total violent offences recorded were related to drugs and alcohol.

Note: It is important to note that the accuracy of this information is dependent on the use of the relevant flag being used when recording a crime on the system.

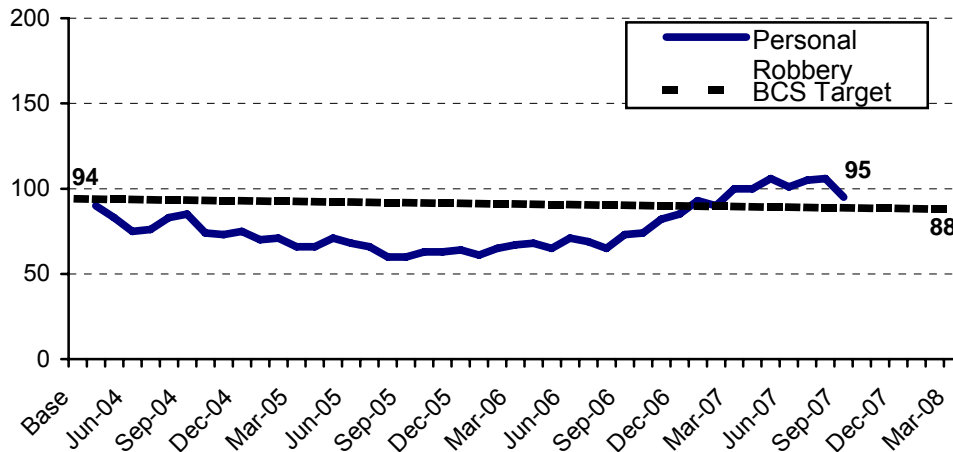
- Over the past 12 months there has been an increase of violent offences which has been due to an upturn in domestic and alcohol related offences.
- Over the last 12 months (Oct 06 – Nov 07) there have been 8 violent incidents reported where weapons have been involved.
- Recent analysis has been conducted on domestic abuse in the Warwick district. It has highlighted that in the Warwick district, adults in the 26-35 age bracket appear to be the most likely perpetrators of domestic abuse (27%). However, offenders are equally likely to be aged between 18-25 and 36-45, with 27% and 26% of offenders respectively. The average age of an offender is 35, although the peak age for an offender is 21 yrs – 5% of offenders were this age at the time of the reported incident.
- The analysis identified the Brunswick ward as the ward where the highest number of domestic violence incidents occurred, accounting for 17% of the total incidents reported in the Warwick district. This ward, which is the most deprived in the district also has a high unemployment rate and suffered 67% more incidents than the Crown ward which is the second highest ward for domestic violence incidents. The report also identified links between domestic abuse and deprivation and the wards with the highest deprivation had the highest level of domestic abuse incidents.
- Analysis conducted earlier in 2007 highlighted that as a proportion of violent crime, Other Wounding was the most common at 40.5% of the total violent crime in the Warwick district. Common Assault accounted for 19% and Harassment 16% of the total violent crime.

Ward	Violent Crime Offences (Oct'06-Sep'07)	Average per Month
Clarendon*	405	33.8
Brunswick	396	33.0
Warwick West	224	18.7
Milverton*	186	15.5
Willes	167	13.9

*Combined Town and Non-Town Wards

ROBBERY - PERSONAL

Personal Robbery offences in Warwick, whilst being below the target line for the majority of the examined time period, increased in the Spring of 2007 above target. This upturn appears to be combated by a recent drop and projected 2007/08 figures suggest that Warwick should achieve its 2007/08 BCS target of 88. However, levels of offences for September 2007 were still 1% above the 2003/04 baseline figure of 94.



Year	Robbery Personal Offences	Rate per 1000 Population	Change on previous year
2003/04 baseline	94	0.7	-
Apr '04 – Mar '05	66	0.5	-28
Apr '05 – Mar '06	67	0.5	+1
Apr '06 – Mar '07	100	0.7	+33
Apr '07 – Sep '07	34	0.5*	-32*

*Projected values based on Apr – Sep '07 data

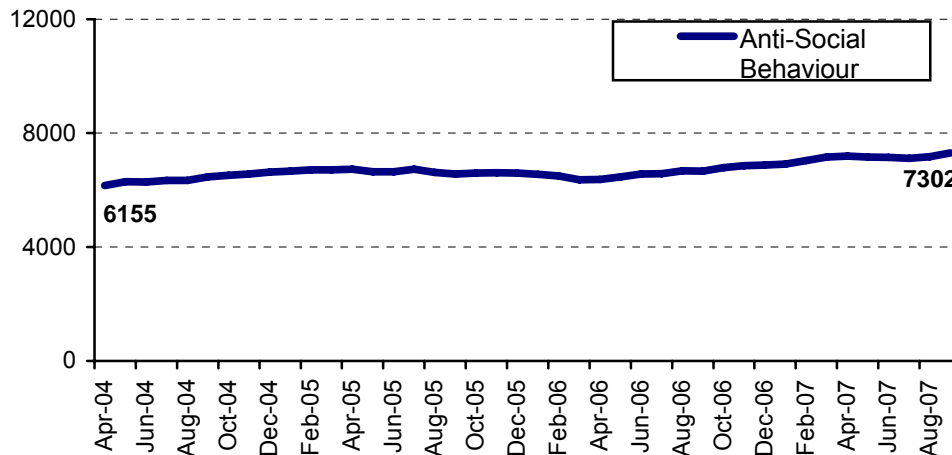
Ward	Personal Robbery Offences (Oct'06-Sep'07)	Average per Month
Brunswick	25	2.1
Clarendon*	20	1.7
Milverton*	9	0.8
Willes	7	0.6
Abbey	6	0.5

*Combined Town and Non-Town Wards

ANTI-SOCIAL BEHAVIOUR

Anti-Social Behaviour in Warwick has increased in the period of April '04 to September '07 by 19%

Between April '06 and March '07 there were 7158 ASB incidents, suggesting that 1 in every 51 members of the Warwick population suffered from some form of anti-social behaviour during this time.



Year	ASB Incidents	Rate per 1000 Population	Change on previous year
Apr '04 – Mar '05	6705	47.8	-
Apr '05 – Mar '06	6362	45.3	-343
Apr '06 – Mar '07	7158	51.0	+796
Apr '07 – Sep '07	3964	56.5*	+770*

*Projected values based on Apr – Sep '07 data

Analysis completed on Anti-Social Behaviour in South Warwickshire suggests the following:

- For the period August 2006 to July 2007 the most common types of anti-social behaviour incidents reported in the Warwick district were for Rowdy and Inconsiderate Behaviour. 40.5% of the incidents reported were of this type and are typically linked to nuisance youths. The second most common type of anti-social behaviour reported is Malicious Communications of which 10% were of this type. Malicious Communications is usually harassment and/or threatening and abusive communications. Brunswick ward suffered the highest proportion of incidents in the selected period at 12% of the total for the district. The Clarendon ward also suffered a high proportion of the incidents as 11% were reported in this ward.

Ward	Anti-Social Behaviour Incidents (Oct'06-Sep'07)	Average per Month
Brunswick	882	73.5
Clarendon*	857	71.4
Warwick West	663	55.3
Willes	645	53.8
Warwick North	617	51.4

*Combined Town and Non-Town Wards

Beating Business Crime

Strategic Assessment 2007

Introduction

This document should be read in conjunction with the County level audit.

Key Performance Facts

All data is comparing the period October 2006 to September 2007 with the baseline figures, unless stated otherwise.

- ✓ The level of crime on or against a business premises is **DOWN** 29%, 1,132 crimes, from a base line figure of 3,929 crimes to 2,797 crimes
- ✓ In this same period all other crime in Warwick was **UP** by 10%.
- ✓ The proportion of business crime to all crime is **DOWN** 8%, from 37% to 29%.
- ✓ The cost of crime to business is **DOWN** £497,000.
- ✓ The level of commercial burglary is **DOWN** by 37%, 175 crimes, from a base line figure of 471 crimes to 296 crimes.
- ✓ The level of shoplifting is **DOWN** by 11%, 72 crimes, from a base line figure of 654 crimes to 582 crimes.
- ✓ The level of all other business crime is **DOWN** 32% from 2,779 offences to 1,902 offences.
- ✓ 477 visits or contacts with business to give business crime prevention advice
- ✓ 244 new members recruited to Business Watch
- ✓ 268 crime alert messages sent to Business Watch members
- ✗ The level of crime is **UP** 17%, 12 crimes, from 71 crimes to 83 where the victim premises is Farms and Garden Centres.
- ✗ The level of violence in business premises is **UP** 19%, 60 crimes from a baseline figure of 318 crimes to 378 crimes.

Future Priorities and Recommendations

Priorities

- ✓ To continue to reduce the overall level of business crime, which has a considerable economic benefit as well as reducing crime.
- ✓ To target those crime areas and premises types, which are either high volume, high value, are areas of concern or have shown increases since the last audit.
 - Crime at farms and garden centres

- Shop Lifting
- Theft of metal
- Theft from HGVs

✓ To work with the Neighbourhood Teams that covers the beats/wards with the highest business crime volumes.

- Clarendon Town
- Warwick South
- Warwick West
- Willes
- Abbey
- Brunswick
- Warwick North

✓ To continue working with the Leamington, Kenilworth and Warwick branches of Warwickshire Retail Crime Initiative to increase membership and reduce crime in shops.

Further Research

Crime patterns within the data set for “other thefts”.

Crime Types

Business crime has fallen in all crime types except for violence and employee thefts. The largest numerical reductions and the least decreases and high volume crimes are shown below.

Crime Type	2004	2007	Difference	% Change
------------	------	------	------------	----------

DOWN

Fraud	584	217	- 367	- 63%
Car Crime	474	204	- 270	- 57%
Commercial Burglary	471	296	-175	- 37%
Criminal damage	285	247	- 38	- 13%

UP

Violence	318	378	+ 60	+ 19%
Employee Thefts	14	35	+ 21	+150%

NOT UP BUT HIGH VOLUME

Shop Lifting	654	582	- 72	-11%
Other Thefts	775	659	- 116	- 15%

Premises Types

Business crime has fallen in all premises types except and farms/garden centres.

Crime Type	2004	2007	Difference	% Change
<i>DOWN</i>				
Shops/ Off Licences	1492	1198	- 294	- 20%
Public House/Licensed Premises	565	440	- 125	- 22%
Offices	188	111	- 77	- 41%
Take Away/ Café/Restaurants	182	115	- 67	- 37%
Factory/Warehouse	113	53	- 60	- 53%
<i>UP</i>				
Farms/Garden Centres	71	83	+ 12	+ 17%

Police Beats

The volume of business crimes on Police beats has been reviewed. The beats with the highest levels are shown below.

Beat/Ward	Crimes	% Business Crime within CDRP
Clarendon Town	680	24%
Warwick South	367	13%
Warwick West	314	11%
Willes	247	9%
Abbey	164	6%
Brunswick	162	6%
Warwick North	127	5%

The Safer Neighbourhood Team with the highest level is Warwick, 808 crimes, 29%% of all Warwick District business crime.

Victimisation Level

This is the number of crimes per 1,000 businesses.

Borough/District	Businesses	Business Crimes	Crimes per 1,000 businesses	2005 Audit figure	Change
Warwick	6,400	2,797	0.43	0.59	- 27%

Survey

An online and postal survey has been completed of Warwickshire business, between 15th October and 16th November 2007.

219 responses were received, 68 on line and 151 by post. The postal return rate was 35%.

55 responses were received for Warwick. The data has been compared with the same survey completed for the previous strategy.

Question	2004	2007	Comment
Being very worried or fairly worried about being the victim of business crime	73%	73%	
Being a victim of crime in the last 12 months	47%	58%	

Impact of Crime

Businesses were asked what impact crime had on their business. They could tick as many impacts as they wished.

	Responses	%
Loss of Custom	16	29%
Low staff morale	21	38%
Disruption to trading	23	41%
Moved premises	2	4%
Investment Postponed	10	18%
Higher Insurance Costs	10	18%
Difficulty in obtaining Insurance	5	9%
Difficulties in Recruiting or Retaining Staff	2	4%
Change in building layout	5	9%
No Impact	13	23%

Comments

The is no change in the fear of crime level. The proportion of respondents who were victims of crime is UP 11%.

The impacts of crime on business are significant as outlined above and in some cases will exceed the value of the property stolen or damaged.

Other Business Crime Issues

Warwick has suffered an increase in metal thefts. Between January and July 2007 there were 42 offences, 14% of the Force total.

FEAR OF CRIME

Warwickshire County Council conducts an annual Best Value postal survey focused on public satisfaction with Council Services. This includes a series of fear of crime indicators. Figures for the 3 key offence types - fear of burglary, physical assault and car theft are all lower than the figures reported in the 2004 Audit of Crime and Disorder report.

In South Warwickshire, the Warwick district has a higher level of the fear of crime compared to the Stratford district but both districts have a much lower level fear of crime than boroughs in the North of the County.

The Warwick district has seen the largest decrease over the past 3 years for fear of crime at 10%.

The most noticeable change is in the fear of having a car stolen, there has been a 10% reduction in fear among respondents in the Warwick district for this type of crime. There has also been a 9% reduction in the fear of being physically attacked by strangers.

The Stratford district has seen a decrease of up to 2% over the past 3 years for fear of crime. The most noticeable change is in the respondent's fear of having their home broken into and something stolen, there has been a 2% reduction in fear among respondents in the Stratford district for this type of crime.

There has been a slight increase in the fear of being physically attacked by strangers (1.4%) by respondents. This is clearly an area of concern to residents.

Percentage of Respondents worried about.....

Borough/Districthaving their home broken into and something stolen		being physically attacked by strangers		having their car stolen		
	04/05	05/06	06/07	04/05	05/06	06/07	04/05	05/06	06/07
Stratford	55.2	50.7	54.3	34.4	38.7	34.9	44.2	40.6	43.9
Warwick	56.4	54.8	57.8	42.7	51.8	35.4	45.0	43.7	38.7

The survey also asks residents to comment on a number of anti-social behaviour issues. The table below shows a comparison between the South Warwickshire data and County data. The Stratford district has below average concerns for all 12 indicators.

- In South Warwickshire the area that residents feel is of most concern is with parents not taking responsibility for the behaviour of their children (55% and 59% respectively).

- The Warwick district reported the biggest problem in the County with people sleeping rough on the streets and in public places (20%). Residents also reported a problem with people being drunk and rowdy in public places. The district saw 37% of residents revealing this as a problem (6% above the County average of 31%).
- Stratford district residents feel that there are problems with people using or dealing drugs, teenagers hanging around on streets and people being drunk and rowdy in public places.
- Warwick district residents feel that there are problems with teenagers hanging around on streets, criminal damage and people using or dealing drugs.

Perceptions of ASB 2006/07

% of residents that feel the following are either a 'very big' or 'fairly big' problem in their area

Indicator	Stratford	Warwick	Warks
Parents not taking responsibility for the behaviour of their children	55%	59%	64%
People not treating other people with respect and consideration	38%	41%	46%
Noisy neighbours or loud parties	14%	15%	16%
Teenagers hanging around on the streets	50%	53%	57%
Rubbish and litter lying around	29%	33%	38%
People being drunk or rowdy in public places	29%	37%	31%
Abandoned or burnt out cars	5%	7%	10%
Vandalism, graffiti and other deliberate damage to property or vehicles	28%	40%	39%
People using or dealing drugs	37%	35%	39%
People being attacked because of their skin colour, ethnic origin or religion	4%	9%	10%
People being attacked because of a disability	5%	5%	7%
People sleeping rough on the streets or in other public places	10%	20%	12%

SUBSTANCE MISUSE

The South Warwickshire recorded substance misuse crime statistics are broadly comprised of offences relating to the supply (trafficking) and possession of controlled substances.

- There has been an increase in offences over the period Oct 2004 to Sept 2007. Over the three year period there has been a steady increase with a high in offences in 2006/7 at 823. When compared to 580 offences reported in 2004/5 there has been a 42% increase in offences.
- Drug offences represent a very small proportion of the total crime. The figure for 2006/7 is equivalent to 3.2 incidents per 1000 population.
- Stratford suffer the majority of the drug offences in South Warwickshire and this is mainly due to the Global Gathering festival at Long Marston that occurs in July every year.

Year	Stratford Drug Offences	Warwick Drug Offences	South Warks Total
Oct 04 – Sep 05	403	177	580
Oct 05 – Sep 06	579	220	799
Oct 06 – Sep 07	558	265	823

- It is important to note that even though drug offence levels are low, substance misuse is a primary causal factor behind acquisitive crime (e.g. burglary and vehicle crime).
- From October 2006 – June 2007, 584 arrested persons who passed through the Leamington custody suite were seen by drugs workers from the Enhanced Arrest Referral Scheme.

Year	All Drug Offences	Rate Per 1000 Population	Change on Previous Year
Oct 04 – Sep 05	580	2.2	-
Oct 05 – Sep 06	799	3.1	+ 38%
Oct 06 – Sep 07	823	3.2	+ 3%

Actions for tackling substance misuse are devised locally through the Tackling Drugs & Alcohol Together Groups (TDATGs) which are monitored by the CDRPs. Their purpose is to:

- Support partnership working to deliver the key aims of the National Drug Strategy (updated 2002) and the National Alcohol Harm Reduction Strategy for England (2004) at a Borough level
- Monitor partnership working and performance that contributes to the achievement of LSP priorities and LAA targets within Rugby
- Make recommendations to the partnership on the necessary actions and investments to reduce the harm caused by drugs and alcohol

RECOMMENDATION

Intelligence gaps were found during the production of the South Warwickshire Vehicle Crime and Criminal Damage Operations report thus hindering the evaluation process. Case studies have been completed where possible and it would be recommended that these types of evaluation be considered in future reports. Further more specific investigations looking into the impact of each individual intervention would be recommended especially considering that a number of Operations are still ongoing. There are difficulties in identifying the impact of specific schemes when a number are in place simultaneously, and this limits our ability to identify good practice.

SECTION 2 THE SCANNING EXERCISE

PUBLIC CONSULTATION

In November 2006 Warwickshire Police as its investment for the future, and as part of a national Policing priority, launches well ahead of schedule its Police Safer Neighbourhoods Initiative. Within the Warwick District, a total of 8 'Safer Neighbourhood Teams' were introduced as a means of enhancing a developing better joint Partnership working with statutory partners, the voluntary sector and most importantly with its communities. The teams are focussed on 'Building Safer Neighbourhoods Together' and protecting communities across the district.

As part of that process regular meetings with residents, groups, elected members and partners are held. At the outset of that public consultation, the eight areas were to identify their top three local concerns upon which joint action planning and future activity would be focussed. Across those eight areas a total of forty two issues were raised. In terms of priorities analysis of those issues raised shows:-

- | | |
|-----------------------------------|---------------------|
| • Anti-Social Behaviour | 29% of all concerns |
| • Excess Speed/Road Safety | 26% of all concerns |
| • Criminal Damage (inc. graffiti) | 12% of all concerns |

(Appendix 2)

In addition, public feedback has been obtained as a result of local processes around the development of the Warwick Community Plan, and as part of the County Council Citizens Panel. The November Citizens Panel survey result reveals that the top 3 priorities are:

- Violent Crime
 - Nuisance Youths (ASB)
 - Drugs and Alcohol Abuse
- Taken together all of the priority issues raised in the Safer Neighbourhoods Consultation and the Citizens Paper are recommended as strategic priorities for Warwick CDRP in 2008/09.

ANALYTICAL ISSUES

Warwick CDRP commissioned 29 analytical products in the last year. There have been issues around the level of resources within the analyst's team (1 vacancy during the whole strategic assessment process) especially at this critical time.

In addition the analysis dimension has been weakened by the lack of both 'offender' and 'victim' profiles. The whole issue around analytical capacity needs to be reviewed and addressed in the next six months and well ahead of next years assessment requirements.

The road map to analysis is critical and the key question is probably not fully answered as a result of this process.

"How do you choose an analytical method that is most suitable to this task, to the available data and to our analytical resources?"

As a result of this assessment process, the Partnership concludes, and acknowledges the need to strengthen capacity so that we can fill the following gaps that have emerged.

Patterns at a point in time

- Are some victims over represented?
- Victim profiles
- Offender profiles
- Repeat victims (profiles)
- Repeat offenders (profiles)

Comparative analysis of sub-populations

- Male and female
- By age group
- Indigenous and non-indigenous
- Rural and urban

Dynamics of criminal behaviour

- Cohort analysis of offenders
- Is there a perceptible pathway to crime?
- Career criminals
- Young offenders and risk
- Patterns of re-offending
- Recidivism

What are the causes of correlates of crime?

- Victim behaviour as a contributory factor?
- Offenders past experiences
- What factors create crime opportunities/

The Partnership needs to enable the team if analysts to:-

- Develop the use of data sets
- Using the analysis to transform data into information that bears on the issues that interest us.

SECTION 3

SELECTING THE PRIORITIES

Many key findings in relation to crime and criminality, have previously been reported to the CDRP in the past year through statistical and other intelligence products developed by the Safer Neighbourhood Analysts.

This assessment seeks to enable decision-makers to assess the long-term threats of crime and criminality. In order to do so a structured methodical approach has been used to establish the level of probability and the level of harm posed to the communities in Warwick District.

Risk analysis for this specific task was undertaken by the use of an adapted Association of Chief Police Officers Model (ACPO 3 PLEM) which is a basis scoring matrix for levels of harm. The probability matrix is shown below. Ultimately, each predicted threat (specific crime type) will have two scores:-

- One for probability
- The other for harm

These scores are then multiplied together to give a final score that will relate to a level of risk ie, HIGH, MEDIUM, LOW.

In order to ensure cross-agency support for this approach, future scoring should be achieved by a facilitated multi-agency panel.

PROBABILITY MATRIX

To commence realisation of our true threats, formal control charts will have to be completed for all crime and incident groups within the Strategy, the results of which will establish whether the crime/incident type is in control, uncontrolled or reducing. To identify what the PROBABILITY factor is, a sliding scale/score is displayed in the Matrix below. The score for each crime/incident type will be dependant on the percent that each offence accounts for within the overall crime figure and the established level of control. (total recorded crime December 2006 – November 2007)

Total % of volume committed	Level of Control or Reduction	Score
10% and over	Uncontrolled	18
	Controlled	17
	Reduction	16
8% and over	Uncontrolled	15
	Controlled	14
	Reduction	13
6% and over	Uncontrolled	12
	Controlled	11
	Reduction	10
4% and over	Uncontrolled	9
	Controlled	8
	Reduction	7
2% and over	Uncontrolled	6
	Controlled	5
	Reduction	4
1% and over	N/A	3
0.5% and over	N/A	2
0% and over	N/A	1

LEVEL OF HARM MATRIX

To identify what the HARM factor is for each offence, a number of 6 separate factors were originally looked at to establish their overall effect. The six relevant factors to this exercise are as follows:-

FACTORS	LEVEL OF HARM	RATING
Physical – Individual	Death	4
	Serious injury	3
	Minor injury	2
	None	1
Psychological – individual	Extremely Concerned	4
	Significantly Concerned	3
	Fairly Concerned	2
	Minor Concern	1
Psychological – Community	Extremely Concerned	4
	Significantly Concerned	3
	Fairly Concerned	2
	Minor Concern	1
Political – YOUR organisation	Internal	4
	Local	3
	County	2
	National	1
Economic – YOUR organisation	Very High	4
	High	3
	Medium	2
	Low	1
Economic – Social	Very High	4
	High	3
	Medium	2
	Low	1

Physical – Individual	Is this offence likely to result in the death or serious injury of an individual; in less serious injury, or is it more likely to involve threats of violence and/or harassment not resulting in actual physical injury?
Psychological - Individual	Is the offence likely to cause extreme, significant or minor concern to the individual?

Psychological – Community	What level of psychological impact is this type of offence likely to have on the community as a whole? Is the community likely to be extremely or significantly concerned, or is the occurrence of such crime only likely to cause minor concern?
Political – YOUR Organisation	Is this area of criminality an issue for your organisation?
Economic – YOUR Organisation	Does this area of criminality have a very high, a high or a medium economic impact on your organisation?
Economic – Social	Does this area of criminality have a very high, a high or a medium economic impact in your community?

Each priority area was be considered and awarded a score of 4, 3, 2 or 1 for each factor and then add these together to give an overall level of harm.

The Probability score and the Harm score will be multiplied together to give an overall Risk Score, depending on that result the priority area can be grouped into either Low, Medium or High as below:

Low Risk = 0 to 108 Medium Risk = 109 – 216 High Risk = 217 plus

This complete process ensures a standardised approach to producing the control strategies for WDCDRP and provides an auditable process that will prove we are targeting the right priority areas within our area. This would facilitate a greater understanding of risk, improved planning and effective deployment of resources addressing a number of the Hallmarks.

In relation to the (individual and subjective) first attempt at calculating the ‘overall risk’ score to the Partnership, the results are shown in the following table.

**CALCULATION OF CURRENT PRIORITIES INTO
LOW-MEDIUM-HIGH RISK
'THE INFORMED PARTNERSHIP THREAT
ASSESSMENT'**

Crime Type	Probability Score	Level of Harm Score	Overall Risk Score	Risk to Partnership
Criminal Damage	18 •	18	324	High
Anti-Social Behaviour	18 •	16	288	High
Road Safety/Speed	18 •	16	288	High
Violent Crime	15	18	270	High
Business Crime	18	13	234	High
Theft from vehicle	11	12	132	Medium *
Domestic Burglary	8	16	128	Medium *
Theft of vehicle	6	19	114	Medium
Theft of Pedal Cycle	6	9	54	Low
Personal Robbery	2	17	34	Low
Vehicle Interference	3	11	33	Low
<p>Low Risk - 0 to 108</p> <p>Medium - 109 to 216</p> <p>High Risk - 217 to 324</p> <p>• SNT & Citizen Panel resident feedback</p>				

(Please refer to Appendix 2 for current performance data)

PRIORITY 1 – CRIMINAL DAMAGE

Key Findings

It accounts for about one quarter of all recorded crime in the District. Criminal Damage is frequently seen as minor crime, but neglected physical environments are unsafe, cause fear and undermine pride in the local community that can lead to further degradation. It can also act as a catalyst to other forms of anti-social behaviour and crime.

There are also numerous examples of those involved in more serious crimes starting their criminal activity with graffiti and damage, tackling this crime may produce a way of more serious offending developing both in the short and longer term. It is therefore important that criminal damage is not tackled in isolation, but as part of the whole anti-social behaviour agenda.

Emerging Trends

The current estimated average cost to an individual who has been a victim of criminal damage is about £850 (Home Office On-Line Report 30/05). The British Crime Survey found the median costs were £100 (2004/05). There are clear hot spot Wards (Brunswick, Clarendon, Willes) with clear types of damage emerging from the analysis. In the last year Partnership effort has resulted in a reduction of 8.2% and a current detection rate of 14.5% Alcohol is a key driver for this crime type.

RECOMMENDATION

Witnesses and victims are critical to tackling this problem but there are a number of barriers to people offering information:-

- Too trivial to report
- Fearful of reprisals
- Uncertainty of how/where to report
- Will it be dealt with

Probability X Harm Total Score = 324

This is the highest level of risk on the matrix scale and it is recommended that the CDRP select this as a priority theme.

PRIORITY 2 - ROAD SAFETY/SPEED

Key Findings

Road safety and speeding continue to be issues for communities as has been the case for the last 10 years. The extent of the problem varies across the SNT areas and the preserve and engagement of neighbourhood policing has raised public expectations that this problem will be addressed. The psychological, social and financial costs can be extremely high.

Emerging Trends

The key issues are around:-

- speed of vehicles
- child pedestrians
- child car occupant casualties
- accidents involving young drivers
- accidents involving motor cyclists
- overtaking and 'T' junctions

RECOMMENDATION

Education, enforcement and reassurance offer the best approaches.

Probability X Harm Total Score = 288

This is at the top end of the HIGH RISK scale and it is recommended that the CDRP select this as a priority theme.

PRIORITY 3 – ANTI-SOCIAL BEHAVIOUR

Key Findings

This is an ongoing priority at local, county and national level, and relates to the well-being of the community. The extent of the problem varies across the district but this was the issue of joint most concern through the public consultation process. This type of behaviour really does impact on equality of life issues heavily.

Emerging Trends

This is a growing issue and adds to the fear that people develop about the confidence to visit certain areas during the evening and can have knock-on effects for health. The health perspective relates to the emotional harm to victims as well as the excessive alcohol consumption often a feature of this behaviour. This is an issue where enforcement can often lead to displacement of offenders to other locations. Public agencies are expected to deal with issue by local communities.

RECOMMENDATION

Probability X Harm Total Score = 288

This is at the top end of the HIGH RISK scale and it is recommended that the CDRP select this as a priority theme.

PRIORITY 4 – SERIOUS VIOLENT CRIME

In the last year serious, violent crime has been reduced by 5% and currently 45% of such offences are being detected. Despite that progress we project that for 2007/08 more than 850 instances of serious, violent crime will have occurred in the district. Evidence from the British Crime Survey indicates that as a society we are becoming less tolerant of violence. Changes in patterns of leisure activities have increased the opportunities for violence, young people are spending more time in pubs and clubs and alcohol consumption is rising.

Emerging Trends

Within this over-arching crime type can be found the Domestic Violence dimension. We know from analysis that typically more than 20% of this crime type relates to domestic violence. Within Brunswick Ward this is as high as 31%. This issue is a significant one due to the physical, emotional and financial harm which affects victims, children, families and others. Positive encouragement to report Domestic Violence incidents will increase the levels of recorded violence.

RECOMMENDATION

Probability X Harm Total Score = 270

This is at the top end of the HIGH RISK scale and it is recommended that the CDRP select this as a priority theme.

PRIORITY 5 – BUSINESS CRIME

Key Findings

This crime type accounts for more than a quarter of all recorded crime in the district and is therefore, a volume crime. From the contextual information the importance of the business sector within the tourist/leisure sector is core.

The financial implications for businesses and the district are also clear, business relocation or closure risks.

Emerging Trends

In the last 12 months the level of reduction has been almost 13% and the three year out-turn (March 08) is projected at a 37% reduction. Expectations from the business community continue to be high as a result of developing the numbers of contacts, growth of Business Watch, use of alert system and installation of temporary alarms.

RECOMMENDATION

Probability X Harm Total Score = 234

This equates to a HIGH RISK on the matrix and it is recommended that the CDRP select this as a priority theme.

(Please refer to Appendix 2 for current performance data)

POSSIBLE PRIORITY 6 – THEFT FROM VEHICLE

Emerging Trends

Theft from vehicles peaked (1469) in the twelve month period December 2005 to November 2006. In 2006/07 there were 1286 theft from vehicle offences up 19% from 2005/06 (1078) and up 4.8% on the 2003/04 baseline (1223). During the past 12 months there was a reduction of 519 offences (-46.02%) and the detection rate of 13.5% is above target. The projected figure for March 31st 2008 is 724 (-40.80%).

Key Findings

This has been a significant problem that has been reducing. The growing popularity of satellite navigation systems has become increasingly attractive to thieves. This is an opportunist crime with identified 'hot spot' locations. The pro-active dedicated unit at Leamington have been pivotal to our success.

RECOMMENDATION

Probability X Harm Total Score = 132

This represents a MEDIUM RISK. If the Partnership selects priorities that are HIGH RISK this would amount to 5 priority themes. The inclusion of any more will over-stretch and limit impact. It is therefore recommended that this is not selected as a priority. Warwickshire Police in their recent Strategic Assessment, have removed auto crime from its control strategy.

POSSIBLE PRIORITY 7 – DOMESTIC BURGLARY

Emerging Trends

Domestic Burglary peaked (673) in the twelve month period January 2006 to February 2007. In 2006/07 there were 669 domestic burglaries up 27.18% from 2005/06 (526) but still down against the 2003/04 baseline (782). During the past 12 months there has been a reduction of 170 offences (-24.78%) and the detection rate of almost 18% which is above target. The projected figure for March 31st 2008 is 521 (-33.37%).

Key Findings

Despite sustained reductions the extent varies across the district. There is no disguising the fear around the threat and reality of domestic burglary. Psychological harm to victims, families and communities invariably result. Financial harm and the possibility of repeat victimisation are also of concern. The public expect a rapid response to this issue, especially from the Police.

RECOMMENDATION

Probability X Harm Total Score = 128

This represents a MEDIUM RISK to the Partnership. It is recommended that this is the only medium risk threat that should be included as a priority theme. Warwickshire Police in their recent Strategic Assessment have included this as a continuing priority.

(Please refer to Appendix 2 for current performance data)

POSSIBLE PRIORITY 8 – THEFT OF VEHICLE

Emerging Trends

Theft of vehicles peaked (270) in the twelve month period December 2005 to November 2006. In 2006/07 there were 263 theft of vehicle offences up 20.09% from 2005/06 (219) and up 2.66% on the 2003/04 baseline (256). During the past 12 months there has been a reduction of 35 offences (-12.82%), and the detection rate of 13.5% is above target. The projected figure for March 31st 2008 is 230 (-10.15%).

Key Findings

Although numbers are low this crime type caused increasing concern in the first and second quarters of 07/08. Performance has improved significantly in the third quarter. Specific vehicle types and vehicles of a certain age are targeted. Theft of a vehicle has psychological and economical impacts.

RECOMMENDATION

Probability X Harm Total Score = 114

This represents a MEDIUM RISK If the Partnership selects priorities that are HIGH RISK this would amount to 5 priority themes. The inclusion of any more will over-stretch and limit impact. It is therefore recommended that this is not selected as a priority. Warwickshire Police in their recent Strategic Assessment, have removed auto crime from its control strategy.

ADDITIONAL ISSUES

Throughout this assessment process the increasing dimension to crime and disorder issues are suffering from the disproportionate effects from both alcohol and substance misuse. Recent national research ① has revealed:-

- 37% of offenders have a current problem with alcohol use
- 32% had violent behaviour related to alcohol use
- 38% have a criminogenic need relating to alcohol misuse, potentially linked to their risk of re-conviction

BMA Research:-

Alcohol is a factor in:

- 60% - 70% of murders
- 75% of stabbings
- 70% of assaults
- 50% of domestic abuse
- 25% of drug users also have problematic alcohol use

As part of the CDRP approach in a number of current action plans focus on the outcomes of the level of take-up to the Alcohol and Substance Misuse Referral Workers in Police custody blocks.

Taken together ALCOHOL and SUBSTANCE MISUSE are major drivers to crime and disorder and these issues should be escalated to the County level for assessment.

In addition, the Partnership still has to be convinced as to the level of added value accruing from the Tackling Prolific Offenders Programme. A specific Warwick impact assessment is required.

Whilst being conducted separately from the assessment recently undertaken by Warwickshire Police, the following strategic alignments feature in both.

- Disproportionately affected neighbourhoods
- Violent crime including domestic abuse
- Domestic burglary
- Alcohol especially its impact on violent crime

① Birmingham Alcohol Strategy 2007 - 2010, p23

SECTION 4

CURRENT PROVISION AROUND RECOMMENDED PRIORITIES FOR 2008 – 09

- Criminal Damage
- Violent Crime
- Business Crime
- Domestic Burglary
- Theft from Vehicle (?)

The attached Action Plans (Appendix 4) have been developed and enhanced over the past year. Agency lead/ownership has been progressed and the level of implementation, and impact are assessed at the operational level on a monthly basis.

The action plans are four dimensional:-

- Intelligence
- Prevention
- Enforcement
- Communication

As a result, plans are assigned traffic light status and owners are responsible for chasing outstanding issues.

CURRENT PROVISION AROUND RECOMMENDED PRIORITIES FOR 2008/09

- | | |
|----------------------|-------------|
| • Criminal Damage | High Risk |
| • Violent Crime | High Risk |
| • Business Crime | High Risk |
| • Theft from Vehicle | Medium Risk |
| • Domestic Burglary | Medium Risk |

Analysis around specific crime type operations has concluded that some operational tactics for vehicle crime and criminal damage have been successful.

A multi-agency operation is being planned for the hot spot Wards of

- Brunswick
- Clarendon, and
- Willes

for the period January to March 2008, as a final push to improve our impact against targets. The approach will focus on:-

- Problematic individuals
- Problematic families
- Problematic locations

The aims are to:-

- Educate/raise awareness
- Prevent
- Reassure

Rigorous management has to be balanced in order to guard against the danger of over-enforcement resulting in increased recorded crime levels.

Current action plan activity has been highly successful around Theft from Vehicle and Business Crime. Cross agency response to Domestic Burglary has been relatively impactful. The least successful plans have been around violent crime and Criminal Damage, although sustained modest reductions on the latter are now being achieved.

These current plans were developed by just two of the Responsible Authorities and more ownership is vital as we set about shaping the next delivery plan. The involvement of the PCT will be welcome but some engaged partners need to raise their game and absent ones need to step forward.

SECTION 5

CONCLUSION AND NEXT STEPS

It has been a statutory requirement to carry out this strategic assessment and there are a number of tasks for the Partnership to carry out:-

Responsible Authorities Executive Group

This group needs to hold a review of the strategic assessment process thus far:-

- What worked? What didn't?
- What lessons have been learnt?
- What needs to be improved
- What priorities do we recommend to the Strategic Member Board?

Strategic Member Board

- Does this assessment fit the development of the Local Area Agreement?
- Have you agreed the selection of priorities?
- You may wish to commission a review process to learn from this process in order to develop the future production of strategic assessments
- Have you determined a time-line for the development of the Partnership delivery plan?
- Have you recorded/acknowledged the identified development needs within the Partnership as evidenced during this process? i.e.
 - Intelligence and data gaps
 - Analytical resources
 - Patching agency contributions/involvement
 - Individual development needs