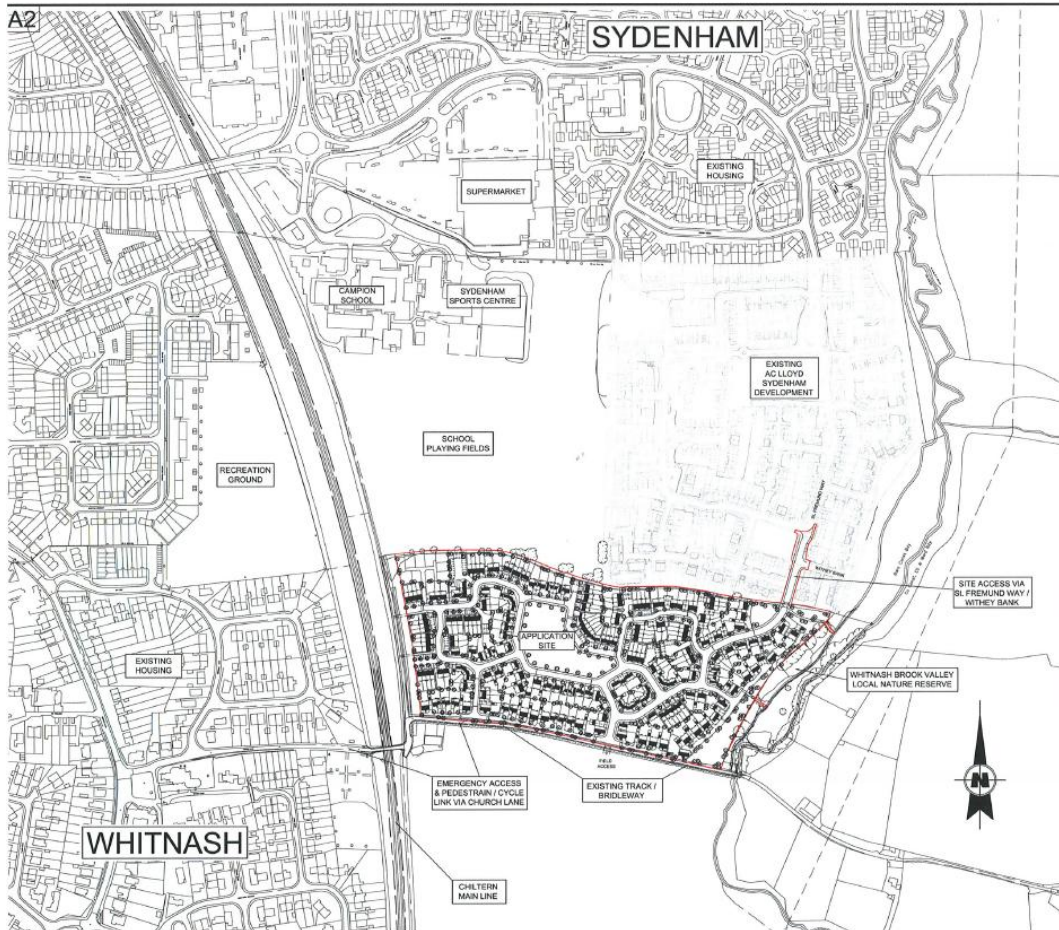


Land South of St. Fremund Way Sydenham, Leamington Spa



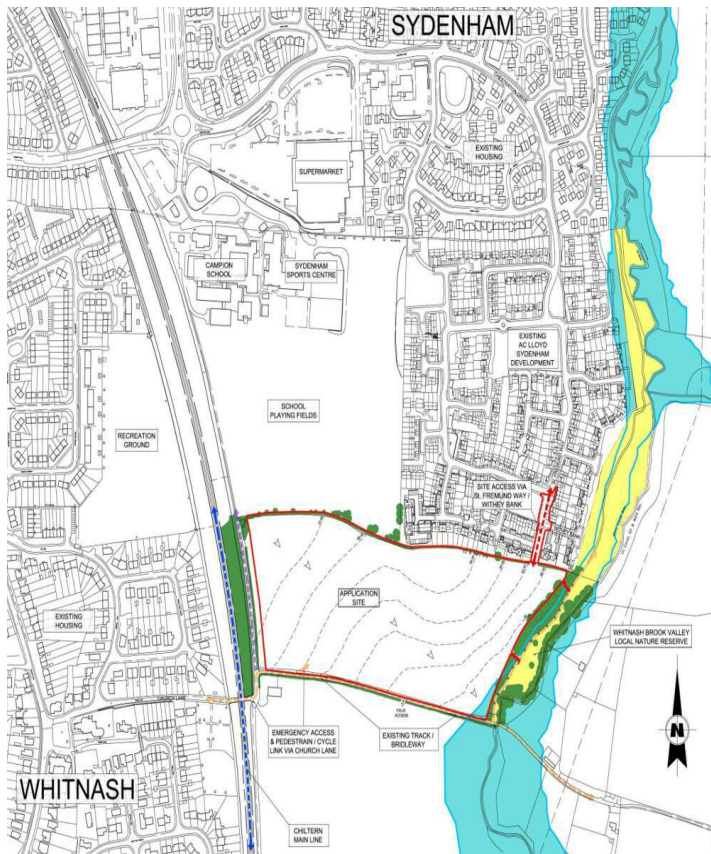
Land South of St. Fremund Way Sydenham, Leamington Spa



Context

- Site identified in Core Strategy Preferred Options
- Increasing shortfall in housing land supply
- Action needed to address need for housing
- Meets needs for market and affordable housing
- Sustainable development location
- Integrated with existing community

Land South of St. Fremund Way Sydenham, Leamington Spa

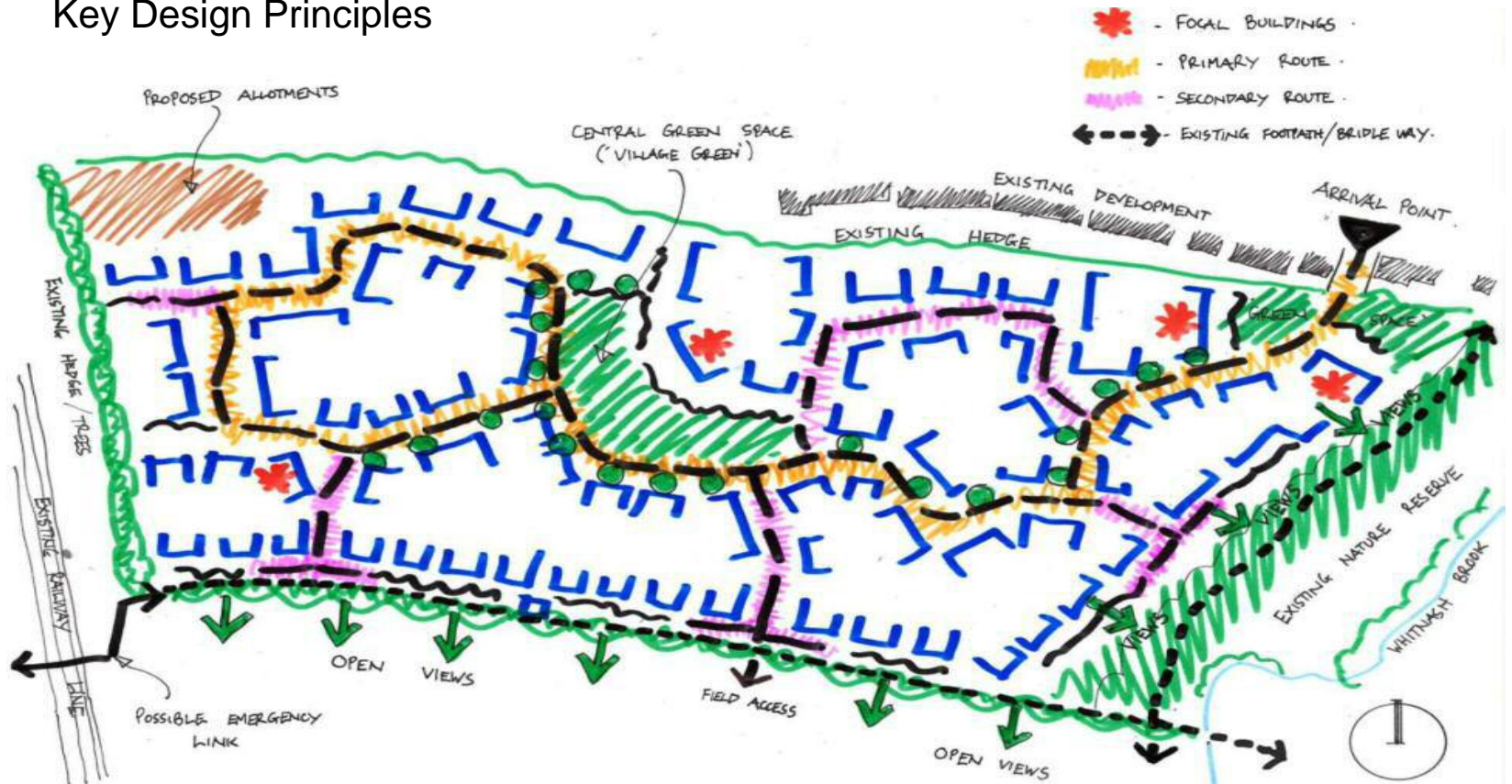


Constraints and Opportunities

- Trees and hedgerows
- Nature Reserve
- Floodplain
- Area of Restraint Designation
- Interface with open countryside
- Access

Land South of St. Fremund Way Sydenham, Leamington Spa

Key Design Principles



Land South of St. Fremund Way Sydenham, Leamington Spa

Density, Mix & Layout



Land South of St. Fremund Way Sydenham, Leamington Spa

Proposed Built Form



Land South of St. Fremund Way Sydenham, Leamington Spa

Development Form



Perspective View Looking North Across The Site



Perspective View Looking West Across Central P.O.S

Land South of St. Fremund Way Sydenham, Leamington Spa

Proposed Built Form



Aerial View



View B



View A



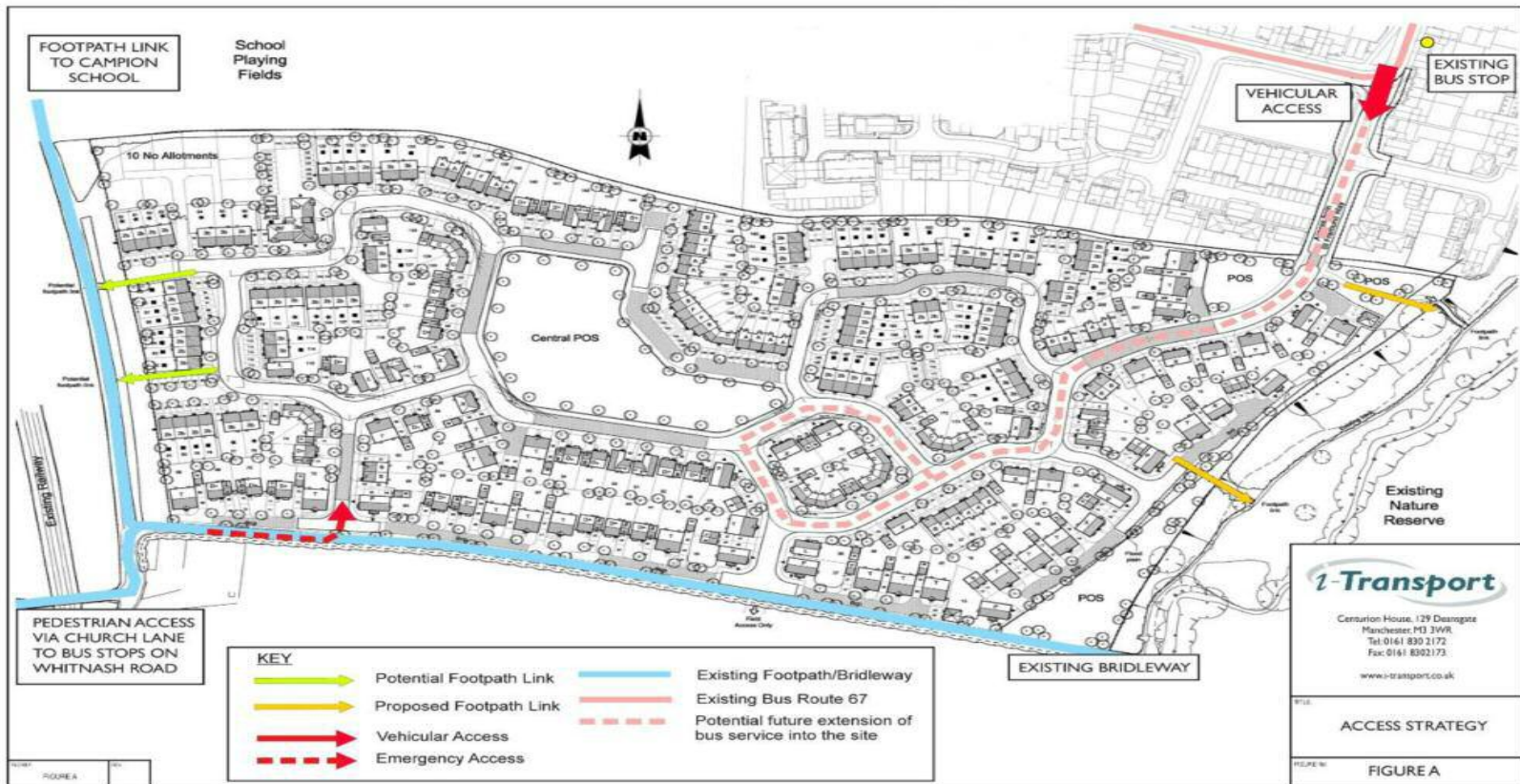
View C



View D

Land South of St. Fremund Way Sydenham, Leamington Spa

Movement and sustainable Transport



Land South of St. Fremund Way Sydenham, Leamington Spa



Next Steps

- Development Forum Committee meeting
- Public Exhibition 23 November at Sydenham Neighbourhood Centre 3.00 - 7.00pm
- Analyse comments
- Submit Planning application
- Determination early 2012
- Opportunity to comment formally to WDC when application is submitted